

RHINO



Stainless Steel Tank Fittings



TITAN
FITTINGS

Toll Free: 877-655-7100



Innovation. Simplicity. Reliability.



Stainless Steel Tank Fittings

Toll Free: 877-655-7100

Designed and engineered to perform under the harshest conditions, Rhino Stainless Steel Tank Fittings offer the ultimate in Sealing Power, Corrosion Resistance, and *Outright Brute Strength!*

Whether for Agricultural, Industrial, Residential or Mission Critical Applications, Rhino tank fittings are the expert's choice for professional tank & piping installations. Easy to install and built like a battleship...nothing beats a Rhino.

When it comes to manufacturing quality and product durability, we wrote the script and published the book! Our precision tooling guarantees 100% accuracy every time and our strict quality control procedures make Rhino the most trusted and dependable bolted tank fittings available anywhere...bar none!

A tank fitting is only as strong as its weakest link, which is why we've left nothing to chance on Rhino fittings. Constructed entirely from chemical resistant, type 316L Stainless Steel, every Rhino fitting is laser cut from super heavy duty plate stock and robotically welded to exacting standards...*a true work of industrial art.* Oversized $\frac{1}{2}$ " diameter studs and precision molded EPDM or VITON gaskets guarantee tremendous long-term performance and maximum leak protection.

When it comes to bolted tank fittings, nothing beats a Rhino.

- **TYPE 316L STAINLESS STEEL**
- **FULL COUPLING (FNPT)**
- **FULL NIPPLE (MNPT)**
- **MOLDED GASKETS (EPDM or VITON)**
- **NINE STANDARD SIZES:**
 $\frac{1}{2}$ ", $\frac{3}{4}$ ", 1", 1 $\frac{1}{4}$ ", 1 $\frac{1}{2}$ ", 2", 2 $\frac{1}{2}$ ", 3", 4"



1.877.655.7100

or visit us online at

Rhinofittings.com

Call today for
Factory Direct Pricing.



Toll Free: 877-655-7100

After more than 14 years of design, development and testing, Rhino is proud to unveil the next generation and future of industrial tank fittings:

US Patent #7,527,299 TITAN Boltless Tank Fittings

When it comes to tank connection safety and reliability, Titan Boltless Tank Fittings have no equal. Titan's industry leading design eliminates the need to layout and drill bolt holes through the tank wall, thus eliminating leaks, stress cracks and premature tank failures. Titan's patented design keeps all the fitting hardware on the outside of the tank where it is easiest to install. Safe, reliable and precise fitting installation has never been so easy.

The strength and safety of a bolted fitting that installs as easily as a bulkhead.

- **THREE CONNECTION STYLES:**
FNPT, Tri-Clover and Victaulic® Grooved Pipe Joint.
- **FIVE FITTING MATERIAL CHOICES:**
Type 316L SS, PVC, CPVC, Polyethylene, Polypropylene
- **THREE GASKET MATERIAL CHOICES:**
EPDM, Viton, Teflon Gortex™
- **TEN STANDARD SIZES:**
1", 1 1/2", 2", 3", 4", 6", 8", 10", 12"
- **CUSTOM MATERIALS AVAILABLE:**
Quoted Upon Request.



Call today for
Factory Direct Pricing.

TITAN

FITTINGS



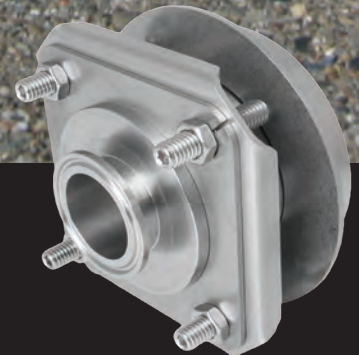
Never drill another
bolt hole again.



Plastic Series (FNPT)



Stainless Series (FNPT)



Stainless Tri-Clover



All fitting hardware is on the outside of the tank...where it should be.

When you cannot risk leaks or system downtime, protect your high value materials and mission critical applications with the industry leading performance of Titan Boltless Tank Fittings.

Titan's comprehensive selection of sizes, materials and connection types are designed to accommodate almost any conceivable tank use or application. From harsh chemical environments and pharmaceutical applications to countless agricultural & industrial uses, no other tank fitting on the market today can match Titan's incredible product selection, physical strength, simplicity of installation and long-term system reliability.

1.877.655.7100

or visit us online at

Rhinofittings.com

Victaulic® Grooved Pipe Joint
© REGISTERED TRADEMARK OF VICTAULIC COMPANY