



22 + 23

THE SPORTS LUXURY EYEWEAR BRAND

LINDSEY VONN
Photo: Dan Campbell



Distributed in Australia by



13/327 Mansfield St

THORNBURY, VIC, 3071

P: +61 (0)3 9459 9648

E: INFO@VERTIGOSPORTS.COM.AU

Skiing with a vision

From Aspen to Courchevel, ski aficionados recognize Yniq as the only sports tech company to blend leading-edge science and Swedish design with haute couture. Designed in Sweden and handmade in Italy by skilled artisans, Yniq focuses on luxury performance.

Patented field of vision

Yniq, elevates snow goggles performance by combining clean, minimalist aesthetics with superior technical prowess. Our patented technology for expanded peripheral vision was developed to eliminate the very real feeling of being restrained when wearing a goggle. As mountain crowds increase, the need to see your surroundings has never been more important. You don't want to drive a fast car with blocked side windows, and you don't want to ski with limited peripheral vision.

Yniq never compromises on details or material as it pursues the perfect feel, quality, and technology required to evoke passion. Our lenses are manufactured in Italy with state-of-the-art materials and many of the beautiful parts are in metal. This definition of true luxury is what drives us.

Designed for skiers by skiers

Our products are 100% designed and developed by some of the world's best skiers and snowboarders; both world champions, like Jon Olsson, and those who ride simply for the passion of it all.

Our strong belief and vision to combine extraordinary luxury and function compelled Lindsey Vonn, former ski-alpine world champion, to join Yniq as a member of the development team and share holder in the company.

Perfection is the ultimate luxury!





Technology

Vision, concept design, proprietary technology, intended use, best in class material selection, and world class factory partnerships deliver product excellence to the market. To build the best, we must use the best.

Each model of Yniq products have different features that set them apart, but they are all built with the goal of expanding your field of vision and providing an unparalleled optical experience.

Our proprietary Peripheral Vision Technology (PVT) was developed to eliminate the very real feeling of being restrained when wearing a goggle. Peripheral vision affects sensations related to speed and motion. Wearing a goggle without PVT is the equivalent of driving a car with covered side windows. Looking straight is not a problem, but that is all you can see. As mountain crowds increase, the need to see your surroundings has never been greater: something not possible until now!

By molding metal self supporting outriggers to hold the strap, we are able to seamlessly add 2 side “windows” to expand your field of vision. Whether spotting your landing, standing at the starting gate of a race, or simply navigating the slopes on a normal day, PVT technology improves your experience on the mountain.

Just as important is how we build our lenses. They are manufactured with state of the art, best in class materials. We do not give our lenses fancy names to mask inferior quality, we simply build a superior lens with the latest innovations in material and technique; similar to how a consumer “builds” their dream car or selects the perfect diamond.

Based on the model, our lenses are built with the highest quality nylons or polycarbonates, utilize machine cut gasket seals to create an incredible dual lens seal, and are removable to allow for maximum light versatility. Our lenses are built by the best with the best to deliver an unparalleled optical experience to our consumer.

We build every goggle without compromise!

Model One

Made for the consumer looking for a timeless classic and discrete luxury without compromising on quality. Model One has been optimized for maximum peripheral vision.

- Designed in Sweden, handcrafted in Italy by skilled artisans
- Retro style with Widescreen HDTM
- Grilamid TR90 frame bar

- Inner lens made of acetate for advanced anti-fog protection
- Peripheral Vision Technology (PVT)
- 100% protection against UVA, UVB, and other harmful rays
- Sophisticated metal details
- Quick Release lens system



WHSP.: \$355.26
INDENT: \$310.86
RRP: \$675.00

112 One - Black Gold | Black/Gold, smoke lens



WHSP.: \$365.79
INDENT: \$320.07
RRP: \$695.00

124 One - Black Turtle | Black/Gold, gold mirror lens



WHSP.: \$355.26
INDENT: \$310.86
RRP: \$675.00

113 One - White Gold | White/Gold, brown lens



WHSP.: \$355.26
INDENT: \$310.86
RRP: \$675.00

125 One - Red Rebel | Black/Red, smoke lens



WHSP.: \$355.26
INDENT: \$310.86
RRP: \$675.00

131 One - Grey Ghost | Grey/Silver, silver mirror lens



WHSP.: \$365.79
INDENT: \$320.07
RRP: \$695.00

128 One - The Pearl | Pearl/Rose G, pink lens



WHSP.: \$365.79
INDENT: \$320.07
RRP: \$695.00

123 One - White Turtle | White/Gold, gold mirror lens



WHSP.: \$355.26
INDENT: \$310.86
RRP: \$675.00

129 One - Black Contrast | Black/Black, high contrast lens

Model Four

The highest form of luxury. This goggle is for the understated consumer who demands perfection and cares most about the details.

- Designed in Sweden, handcrafted in Italy by skilled artisans
- 100% protection against UVA, UVB, and other harmful rays
- Inner lens made of acetate for advanced anti-fog protection
- Sophisticated metal details

- Quick Release lens system for ease when changing lenses
- Machine cut gasket creates the ultimate seal between the inner and outer lenses
- Peripheral Vision Technology (PVT)



WHSP:. \$365.79
INDENT: \$320.07
RRP: \$695.00

412 Four - White Star | White/Silver, silver mirror lens



WHSP:. \$365.79
INDENT: \$320.07
RRP: \$695.00

426 Four - White Rose Gold | White/Rose G, rose mirror lens



WHSP:. \$365.79
INDENT: \$320.07
RRP: \$695.00

414 Four - Black Gold | Black/Gold, smoke lens



WHSP:. \$365.79
INDENT: \$320.07
RRP: \$695.00

427 Four - Blue Dawn | Blue/Blue, blue mirror lens



WHSP:. \$365.79
INDENT: \$320.07
RRP: \$695.00

422 Four - Inferno | Black/Orange, orange mirror lens lens



WHSP:. \$365.79
INDENT: \$320.07
RRP: \$695.00

428 Four - Espresso | Brown/Brown, brown mirror lens



WHSP:. \$365.79
INDENT: \$320.07
RRP: \$695.00

423 Four - Black All Gold | Black/Gold, gold mirror lens lens



WHSP:. \$365.79
INDENT: \$320.07
RRP: \$695.00

429 Four - Black Orchid | Black/Pink, magenta mirror lens

Model Nine

For the consumer who wants it all. Unrivalled peripheral vision, extraordinary metal detailing, superior nylon lens quality with magnet technology, the Model Nine takes everything to the next level.

- Outer lens is made of Widescreen HDTM nylon- this provides our unique panoramic field of vision, an overall clearer field of sight, along with being lighter than a polycarbonate lens
- Market leading anti-scratch and oil-phobic treatments
- Inner lens is made of acetate for advanced anti-fog protection

- Machine cut gasket creates the ultimate seal between the inner and outer lenses
- 100% protection against UVA, UVB, and other harmful rays
- Dynamic Lens Technology (DLT) helps you adjust to nature by swapping lenses faster than ever with high grade magnets
- Peripheral Vision Technology (PVT)
- Every goggle includes an additional low light lens



WHSP:. \$521.05
INDENT: \$455.92
RRP: \$990.00

913 Nine - White Gold | White/Gold, brown mirror lens



WHSP:. \$521.05
INDENT: \$455.92
RRP: \$990.00

911 Nine - All Black | Black/Black, smoke lens



WHSP:. \$494.74
INDENT: \$432.89
RRP: \$940.00

919 Nine - Black Gold | Black/Gold, smoke lens



WHSP:. \$521.05
INDENT: \$455.92
RRP: \$990.00

921 Nine - Black All Gold | Black/Gold, gold mirror lens



WHSP:. \$521.05
INDENT: \$455.92
RRP: \$990.00

914 Nine - Black Gold | Black/Gold, smoke lens



WHSP:. \$521.05
INDENT: \$455.92
RRP: \$990.00

923 Nine - Black All Gold | Black/Gold, gold mirror lens



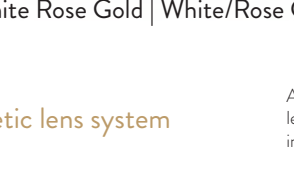
WHSP:. \$521.05
INDENT: \$455.92
RRP: \$990.00

916 Nine - Grey Ghost | Grey/Silver, silver mirror lens

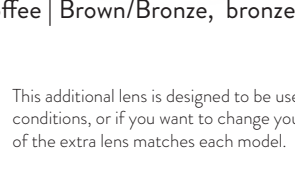


WHSP:. \$521.05
INDENT: \$455.92
RRP: \$990.00

925 Nine - Golden Sky | Black/Gold, ice blue mirror lens



918 Nine - White Rose Gold | White/Rose G, rose mirror lens



931 Nine - Coffee | Brown/Bronze, bronze mirror lens

NINE Magnetic lens system

All goggles in the Nine series features a magnetic lens fastening system. Super magnets keeps the lens in place and makes lens changes a breeze.

This additional lens is designed to be used in lower light conditions, or if you want to change your look. The color of the extra lens matches each model.



Model Six & Model Two

Model Six: The highest form of luxury taken to the next level.

- Designed in Sweden, handcrafted in Italy by skilled artisans
- 100% protection against UVA, UVB, and other harmful rays
- Sophisticated metal details
- Peripheral Vision Technology (PVT)

Model Two: Minimalist design meets Italian craftsmanship.

- The frame is specially designed to wear over prescription glasses
- Designed in Sweden, handcrafted in Italy by skilled artisans
- Inner lens made of acetate for advanced anti-fog protection
- Quick Release lens system for ease when changing lenses



WHSP:. \$1,999.50
INDENT: \$1,749.50
RRP: \$3,799.00

606 Six Invidea - Platinum Star | Platinum plated/real diamonds, platinum mirror



WHSP:. \$500.00
INDENT: \$437.50
RRP: \$950.00



WHSP:. \$521.05
INDENT: \$455.92
RRP: \$990.00

602 Six - Grey Ghost | Grey/steel, smoke lens



WHSP:. \$5260.53
INDENT: \$227.96
RRP: \$495.00

601 Six - White Star | White/gun, silver mirror lens



WHSP:. \$5260.53
INDENT: \$227.96
RRP: \$495.00

211 Two - White Star | White, silver mirror lens



WHSP:. \$5260.53
INDENT: \$227.96
RRP: \$495.00

219 Two - Pink Orchid | White, pink mirror lens



WHSP:. \$5260.53
INDENT: \$227.96
RRP: \$495.00

210 Two - Black Star | Black, silver mirror lens

220 Two - Black Orchid | Black, pink mirror lens



Perfected in Italy

Over a decade ago in the Lombard region of Italy, North of Milan, in the Città di Varese, Yniq formed a special relationship with generational artisans. It is here that our Swedish design team first met these talented craftsmen. Varese is located only an hour from Alagna and Monterosa Ski areas, making for a perfect synergy in alpine sports and exceptional design.

In this special region, the design house of 39 Via Giulio Cesare, was one of our first stops. Today, it is a well known address for pinnacle design innovations. With more than 60 years of manufacturing traditions, a new generation has evolved the business as a leader in high tech custom industrial design.

Not too far away, you will find Marco – a man with legendary status. His knowledge of lenses, materials, and coatings is truly unique. Paired with our patented panoramic field design, the result is an exquisite and highly functional product, a ski goggle with extreme peripheral vision.

Perfecting the Yniq collection for over a decade, we continue to fine-tune each model. Relentless in our quest for the very best, we have yet to have a partner among the craftsmen of Lombardy say 'È impossibile!'. And for this, we are immensely grateful. We continue the relentless pursuit of precision and performance.

Compromise is not in our DNA!



Color combinations model ONE

SKU#	MODEL NAME	STRAP	FRAME	BAR	LENS	METAL
112	One - Black Gold	Black/Gold	Black	Black	Smoke	Gold
113	One - White Gold	White/Gold	White	White	Brown	Gold
123	One - White Turtle	White/Gold	White	Turtle	Gold mirror	Gold
124	One - Black Turtle	Black/Gold	Black	Turtle	Gold mirror	Gold
125	One - Red Rose	Black/Black	Red	Black	Smoke	Black
128	One - The Pearl	Pearl	White	Pearl	Pink	Rose Gold
129	One - Black Contrast	Black/Black	Black	Black	High contrast	Black
130	One - Grey Ghost	Grey/Steel	Grey	Grey	Silver mirror	Steel



Color combinations model TWO

SKU#	MODEL NAME	STRAP	FRAME	LENS
210	Two - All Black	Black	Black	Silver mirror
211	Two - White Star	White	White	Silver mirror
214	Two - Black Blue	Black	Black	Blue mirror
216	Two - Inferno	Black	Black	Orange mirror
219	Two - Pink Orchid	White	White	Pink mirror
220	Two - Black Orchid	Black	Black	Pink mirror



Color combinations model FOUR

SKU#	MODEL NAME	STRAP	FRAME	LENS	METAL
412	Four - White Star	White/Silver	White	Silver mirror	Steel
414	Four - Black Gold	Black/Gold	Black	Smoke	Gold
422	Four - Inferno	Black/Orange	Black	Orange mirror	Orange
423	Four - Black All Gold	Black/Gold	Black	Gold mirror	Gold
426	Four - Rose Gold	White/Rose Gold	White	Rose gold mirror	Rose
427	Four - Blue Dawn	Blue/Blue	Blue	Blue mirror	Blue
428	Four - Espresso	Brown/Bronze	Brown	Bronze mirror	Bronze
429	Four - Black Orchid	Black/Black	Black	Magenta mirror	Pink



Color combinations model NINE

SKU#	MODEL NAME	STRAP	FRAME	LENS	METAL
911	Nine - All Black	Black	Black	Smoke	Black
913	Nine - White Gold	White	White	Brown mirror	Gold
914	Nine - Black Gold	Black	Black	Smoke	Gold
916	Nine - Grey Ghost	Grey	Black	Silver mirror	Steel
918	Nine - White Rose Gold	White	White	Rose mirror	Rose Gold
922	Nine - Inferno	Black	Black	Orange mirror	Orange
923	Nine - Black All Gold	Black	Black	Gold mirror	Gold
925	Nine - Golden Sky	Black	Black	Ice blue mirror	Gold
931	Nine - Coffee	Brown	Brown	Bronze mirror	Bronze



Color combinations model SIX

SKU#	MODEL NAME	STRAP	FRAME	LENS	METAL
601	Six - White Star	White	White	Silver mirror	Gun
602	Six - Grey Ghost	Grey	Grey	Smoke	Steel
606	Six - Invidia Platinum	Grey	Grey	Platinum mirror	Platinum





13/327 Mansfield St
THORNBURY, VIC, 3071

E: info@vertigosports.com.au
P: +61 (0)3 9459 9648