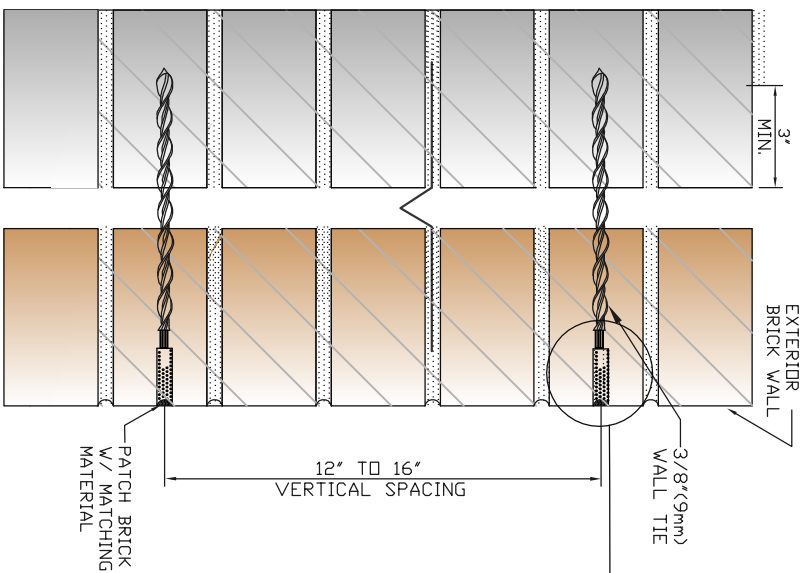
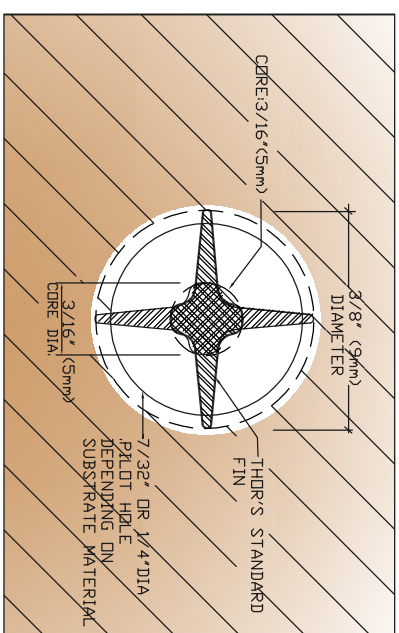
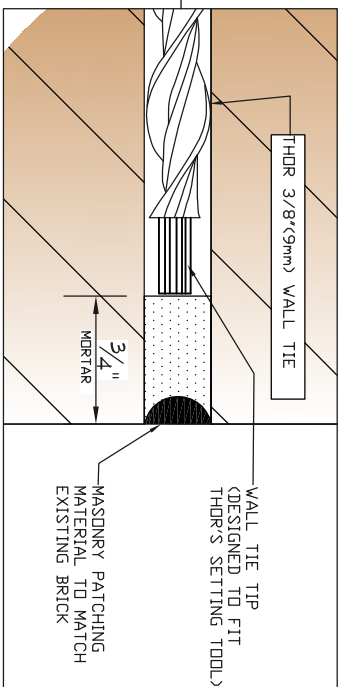


PLAN
SCALE: N.T.S.



Section A
SCALE: N.T.S.



Wall Tie-Cross Section
SCALE: N.T.S.



• MATERIAL: AUSTENITIC STAINLESS STEEL, GRADE 304 AVAILABLE IN GRADE 316, AS SPECIAL ORDER

• LENGTH: 7' TO 20'

• ULTIMATE TENSILE STRENGTH: 3.372LBS. (15 K/N)

WALL TIES INSTALLATION SPECS:

WALL TIE INSTALLATION TO BE PERFORMED USING 3/8\"/>

*WALL TIE INSTALLATION WORK SHALL BE PERFORMED BY A THOR CERTIFIED CONTRACTOR.

FOLLOW MANUFACTURER'S INSTALLATION INSTRUCTIONS AND METHODS AND CONSULT WITH ENGINEER OR ARCHITECT FOR INTERPRETATION OF ANY CONFLICTS SEQUENCE OF INSTALLATION:

1. DRILL PILOT HOLE OF APPROPRIATE DIAMETER THROUGH THE BRICK USING A ROTARY PERCUSSION 3-JAW CHUCK HAMMER WITH THE CORRECT SIZE DRILL BIT. SPACE WALL TIES AS SPECIFIED BY ENGINEER OR ARCHITECT.
2. VERIFY THAT THE PILOT HOLE GOES THROUGH ALL THE WYTHES OF BRICK. IF WALL IS A CAVITY WALL STOP DRILLING AT THE CAVITY TO PREVENT 'WHIPPING', ALIGN PILOT HOLE AND CONTINUE DRILLING INTO SUBSTRATE.
3. INSERT THE CORRECT LENGTH THOR HELICAL WALL TIE (SEE TABLE BELOW) INTO THE THOR 9mm SETTING TOOL AND DRIVE THE TIE INTO THE PRE-DRILLED HOLE USING A SDS ROTARY HAMMER DRILL. VERIFY THAT THE DRILL IS ON THE HAMMER ONLY SETTING.
4. INSTALL WALL TIE AND RECESS THE TIE 3/4" INTO THE JOINT.
5. ANY MISSING OR POOR QUALITY MASONRY MUST BE REPLACED.

NOTES:

TO DETERMINE THE LENGTH OF THE WALL TIE ON A MULTI-WYTHE WALL, THE TIE MUST BE LONG ENOUGH TO PENETRATE 3" INTO THE REMOTE WYTHE OF THE WALL. THE PILOT HOLE MUST BE 1" LONGER THAN THE LENGTH OF THE TIE IN ORDER TO COUNTERSINK THE TIE AND RE-POINT THE JOINT.

DRILL & COUNTER SINK PILOT HOLE 1" DEEPER THAN THE LENGTH OF THE TIE TO ALLOW FOR PATCHING OF THE HOLE IN THE MASONRY UNIT.

THE DIAMETER OF THE DRILL BIT IS TYPICALLY 7/32" OR 1/4" FOR A 9MM TIE.

SPACING OF WALL TIES SHOWN ON DRAWING ARE ONLY TO BE USED AS GENERAL GUIDELINES. EXACT SPACING MUST BE DETERMINED BY THE PROJECT ENGINEER OR ARCHITECT.

CATALOG NO. & SIZES

7' LONG-CAT.NO.: CDT-0180-A2	14' LONG-CAT.NO.: CDT-0355-A2
8' LONG-CAT.NO.: CDT-0205-A2	15' LONG-CAT.NO.: CDT-0380-A2
9' LONG-CAT.NO.: CDT-0230-A2	16' LONG-CAT.NO.: CDT-0405-A2
10' LONG-CAT.NO.: CDT-0255-A2	17' LONG-CAT.NO.: CDT-0430-A2
11' LONG-CAT.NO.: CDT-0280-A2	18' LONG-CAT.NO.: CDT-455-A2
12' LONG-CAT.NO.: CDT-0305-A2	19' LONG-CAT.NO.: CDT-0480-A2
13' LONG-CAT.NO.: CDT-0330-A2	20' LONG-CAT.NO.: CDT-0505-A2

340 West Passaic Street
Rochelle Park NJ 07662
TEL: 201 880-8819
WWW.THORHELICALUSA.COM
SUPPORT@THORHELICALUSA.COM



DATE: January 2, 2017	SCALE: Not To Scale	Drawing No.:
PROJECT: TYPICAL DETAIL		W-511