

THOR GROUT TIE
5/16" (8mm) dia. x 19.5", 29", 39" long



MATERIAL: AUSTENITIC STAINLESS STEEL, GRADE 304 AVAILABLE IN GRADE 316, AS SPECIAL ORDER

• ULTIMATE TENSILE STRENGTH: CONTACT MANUFACTURER (201 880-8819)

• GROUT: WHO-60 GROUT MANUFACTURED BY THOR HELICAL. HIGH PERFORMANCE MASONRY REPAIR GROUT IS A CEMENTITIOUS THIXOTROPIC, SHRINK COMPENSATED GROUT FORMULATED WITH A SPECIAL BLEND OF POLYMERIC REINFORCING RESINS THAT BOND STEEL TO MASONRY AND MASONRY TO MASONRY.

GROUT TIES INSTALLATION SPECS

GROUT TIE INSTALLATION TO BE PERFORMED USING 5/16"(8mm) X ----' LONG, STAINLESS STEEL, GRADE 304 THOR GROUT TIES* AS MANUFACTURED BY THOR HELICAL.

* GROUT TIE INSTALLATION WORK SHALL BE PERFORMED BY A THOR CERTIFIED CONTRACTOR.

FOLLOW MANUFACTURER'S INSTALLATION INSTRUCTIONS AND METHODS AND CONSULT WITH ENGINEER FOR INTERPRETATION OF ANY CONFLICTS.

SEQUENCE OF INSTALLATION IS AS FOLLOWS:

1. SECURE ALL LOOSE MASONRY PRIOR TO INSTALLING GROUT TIES.
2. DRILL 3/4" DIAMETER CLEARANCE HOLES INTO THE MASONRY AT LEAST 1" LONGER THAN THE TIE.
3. SPRAY ALL HOLES WITH WATER TO REMOVE ANY LOOSE DEBRIS. IF WATER IS NOT AVAILABLE BLOW DR VACUUM HOLES.
4. ATTACH THE APPROPRIATE LENGTH THOR PINNING NOZZLE TO THE THOR GROUT GUN.
5. MIX THE THOR WHO-60 GROUT BY COMBINING MATERIALS FOUND IN THE BUCKET AND MIXING THOROUGHLY USING A MIXING PADDLE AND AN ELECTRIC DRILL.
6. FILL THE THOR GROUT GUN WITH WHO-60 GROUT.
7. TAKE THE GUN WITH THE PINNING NOZZLE AND PLACE IN THE PRE-DRILLED HOLE, SLIDE THE NOZZLE ALL THE WAY TO THE BACK OF THE HOLE AND BEGIN TO SQUEEZE THE HANDLE. THIS WILL PUSH THE GROUT AND FILL ANY VOIDS IN THE HOLE. THEN TAKE THE THOR GROUT TIE AND TWIST IT INTO THE HOLE SO IT IS COMPLETELY COVERED IN GROUT AND 3/4" BELOW THE SURFACE OF THE MASONRY.
9. FILL AND PATCH ALL HOLES WITH MATCHING BUILDING SEALANT.

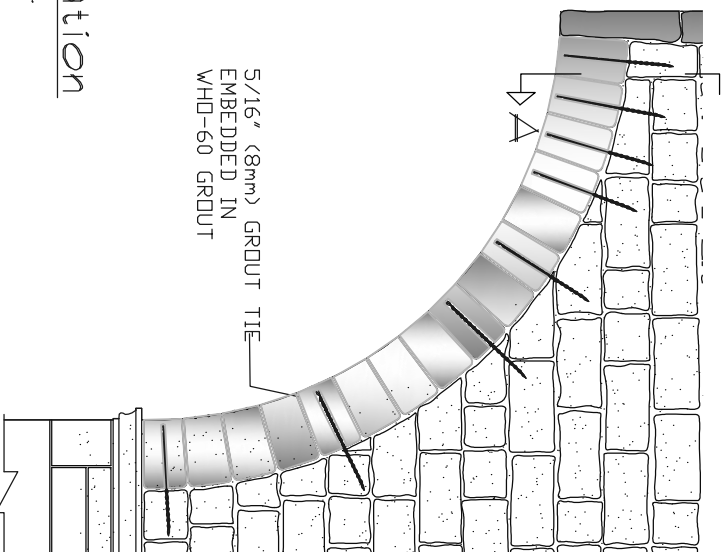
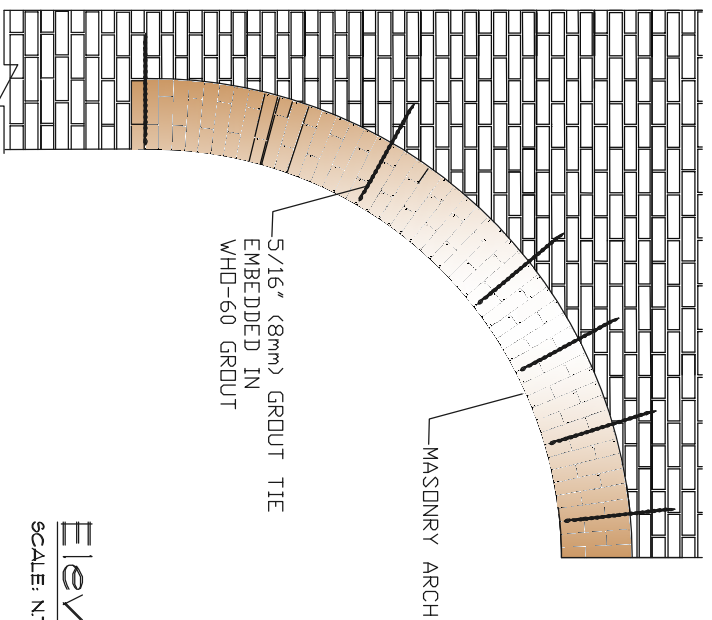
NOTES:

TO DETERMINE THE LENGTH OF THE GROUT TIE ON A MULTI-WYTHE WALL, THE TIE MUST BE LONG ENOUGH TO PENETRATE 3" MIN INTO THE REMOTE WYTHE OF THE WALL. THE LENGTH OF THE CLEARANCE HOLE MUST BE 1" LONGER THAN THE LENGTH OF THE TIE IN ORDER TO COUNTERSINK THE TIE AND REPOINT THE JOINT.

CATALOG NO. & SIZES

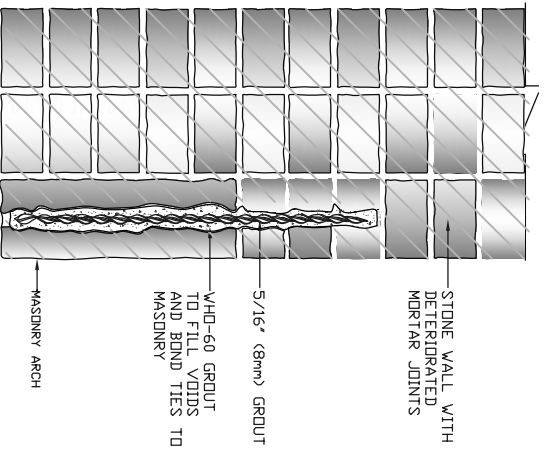
- 5/16"(8mm) x 19.5"LONG - CAT.NO.: M90-0495-A2
- 5/16"(8mm) x 29"LONG - CAT.NO.: M90-0735-A2
- 5/16"(8mm) x 39"LONG - CAT.NO.: M90-1000-A2

GROUT TIES ARE ALSO AVAILABLE IN 3/8"(9mm) AS SPECIAL ORDER



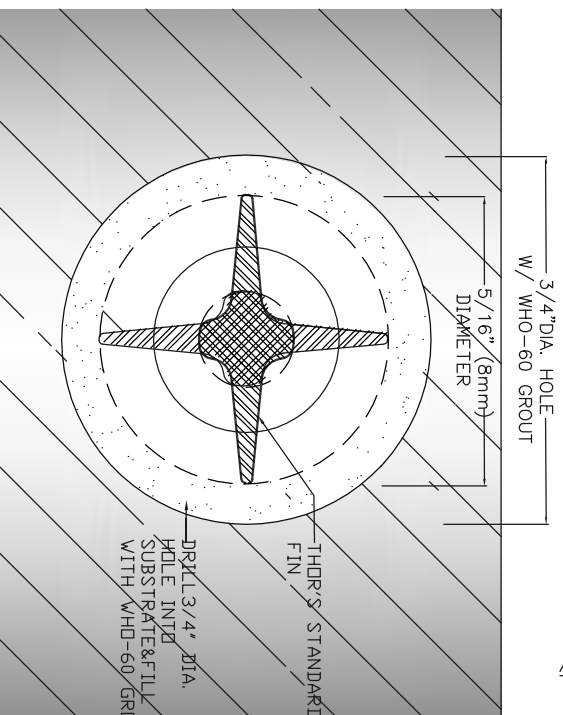
Elevation

SCALE: NTS.



Section A

SCALE: NTS.



Cross Section

SCALE: NTS.

DATE: January 2, 2017	SCALE: Not To Scale	Drawing No.:
PROJECT: TYPICAL DETAIL		GT-902

340 WEST PASSAIC STREET
ROCHELLE PARK NJ 07662
TEL: 201 880-8819
WWW.THORHELICALUSA.COM
SUPPORT@THORHELICALUSA.COM

THORHELICAL® - USA