



# Corvina 255V

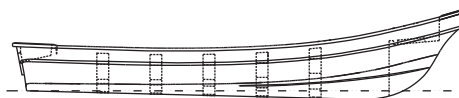
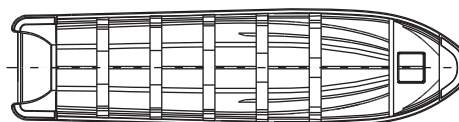
## Overview

The Corvina 255V is a utility boat for coastal areas and open seas. The model has transom well and shelf with space for storage. Due to the excellent performance of its hull in deep V it makes it safe and comfortable to navigate in waters with strong waves.

## Specifications

L.O.A.	7.84 m	25,7'
B.O.A.	1.98 m	6,49'
H.O.A.	1,11 m	3,64'
Load	1400 kg	3086 lb.
Max. Hp.		*200 HP
Transom height	0.61 m	20"
	0.64 m	25"

\* Maximum HP based on Yamaha 4-Stroke Outboard engines.



## Standard Features

- 5 F.R.P Rib frames
- 1 F.R.P Transom well
- 1 shelf in FRP with Chamber and lid
- 1 3" Cable boot
- 3 Aluminum transom plate
- 1 Polyethylene rub rail with aluminum plate
- 1.FRP Transom cover
- 1 1 1/4" Flip-lock drain plug
- 3 1/2 " Stainless steel bow and stern eyes

## Optional accessories

- 1 F.R.P. Removable seat and rib reinforcements
- 1 Board bottom (set of 5)
- 1 6" Plastic cleat
- 1 OBM Instalation <=85 HP
- 1 Polyurethane paint graphic (set of 2 letters)

Eduardoño S.A.S can make improvements and/or Updates of its products and its technical sheet.

[www.eduardono.com](http://www.eduardono.com)

@ eduardono\_ f Eduardoño

018000 180 180

