



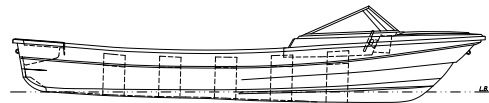
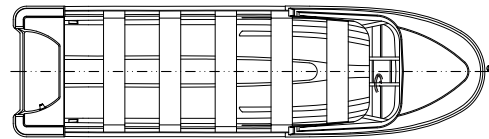
Taxi 220C

Overview

The Taxi 220C is a transportation boat for 18 passengers which offers great comfort and security. The model is designed with an aerodynamic tempered glass windshield, mechanical steering, five fib filled rib benches and transom well.

Specifications

L.O.A.	6.84 m	22.4'
B.O.A.	1.89 m	6.20'
H.O.A.	0.89 m	2.92'
Load	1050 Kg	2315 Lb
Max. Hp.		200 hp.
Approx. weight	500 Kg	1100 Lb
Transom height	0.51 m	20"
	0.63 m	25"



TAXI 220C

* Maximum HP based on Yamaha 4-Stroke Outboard engines.

Standard Features

- 5 F.R.P Foam filled rib benches
- 1 F.R.P. Deck
- 1 F.R.P. Transom well
- 1 6" Plastic cleat
- 1 Mechanical steering system
- 1 3" Cable boot
- 3 Aluminum transom plates
- 1 Three-body aerodynamic tempered glass windshield
- 1 Polyethylene rub rail with aluminum plate
- 1 F.R.P. Transom cover
- 1 1/4" Flip-lock drain plug
- 3 1/2" Stainless steel bow and stern eyes

Optional accessories

- 1 Canvas awning set
- 1 Canvas awning set with vinyl sides
- 1 Basic electrical system
- 1 Navigation lights
- 1 Instruments light
- 1 1100 Gph. Bilge pump
- 1 Single engine single battery switch
- 1 85 A-h / 105 A-h Battery box
- 1 6" Plastic cleat
- 1 Backrest support pair
- 1 Ceiba wood backrest
- 1 Polyurethane paint graphic (set of 2 letters)
- 1 85 A/h 12 V Battery
- 1 Single engine instalation

Eduardoño S.A.S can make improvements and/or Updates of its products and its technical sheet.