



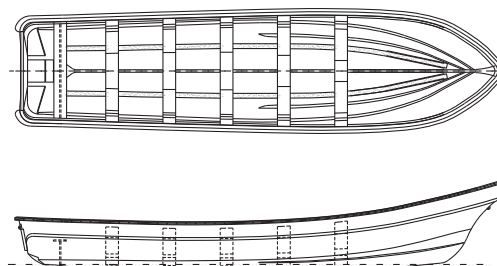
Dorado 250

Overview

The Dorado 250 is a utility craft for coastal areas and open waters an excellent cost- benefit choice that adapts to most tasks required by the users, with capacity for up to 1400 KG. It requires little engine power due to its excellent hull design.

Specifications

L.O.A.	7.70 m	25,26'
B.O.A.	1.96 m	6,43'
H.O.A.	1,02 m	4,35'
Load	1400 kg	3087 lb.
Max. Hp.	75HP-2T	60HP-4T
Approx. weight	336 kg	741 lb.
Transom height	0.51 m	20"



Standard Features

- 1 FGRP hull with white exterior paint and gray interior paint with gray spots in the bottom.
- 5 FGRP ribs
- 1 wood partition located aft lined with FGRP, with drain.
- 1 pilot seat in wood lined in FGRP located aft.
- 3 1/2" e steel eyebolts
- 1 folded and perforated aluminum transom plate.
- 1 FGRP mirror protector for one engine.
- 1 lever plug kit.



Optional accessories

- 1 FGRP interior removable shelf
- 1 FGRP removable shelf over bulwark
- 1 polyethylene gunwale protector (without insert)
- 1 gunwale protector with aluminum insert.
- 1 upper color stripe on the outside of the hull, with optional colors gray G2, blue Z1, green V3

Eduardoño S.A.S can make improvements and/or Updates of its products and its technical sheet.