



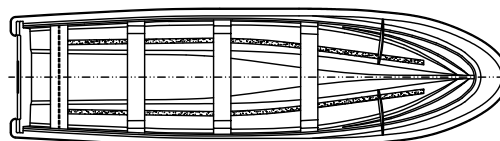
# Dorado 180

## Overview

The Dorado 180 is a utility craft for coastal areas, an excellent cost - benefit choice that adapts to most tasks required by users, with capacity for up to 770 kg. It requires little engine power due to its excellent hull design.

## Specifications

L.O.A.	5.79 m	19,00'
B.O.A.	1.58 m	5,18'
H.O.A.	1,17 m	3,84'
Load	770 kg	1698 lb.
Max. Hp.	25 HP-2T	20HP-4T
Approx. weight	290 kg	639 lb.
Transom height	0.51 m	20"



## Standard Features

- 1 FGRP hull with white exterior paint and gray interior paint with gray spots in the bottom
- 3 FGRP ribs.
- 1 wood partition located aft lined with FGRP, with drain
- 1 pilot seat in wood lined in FGRP located aft.
- 3 3/8" stainless steel eyebolts.
- 1 folded and perforated aluminum transom plate
- 1 FGRP mirror protector for one engine.
- 1 kit lever plug.



## Optional accessories

- 1 FGRP removable shelf
- 1 FGRP removable shelf over bulwark
- 1 polyethylene gunwale protector (without insert)
- 1 gunwale protector with aluminum insert.
- 1 upper color stripe on the outside of the hull, with optional colors gray G2, blue Z1, green V3

Eduardoño S.A.S can make improvements and/or Updates of its products and its technical sheet.