



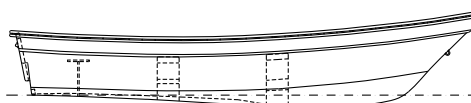
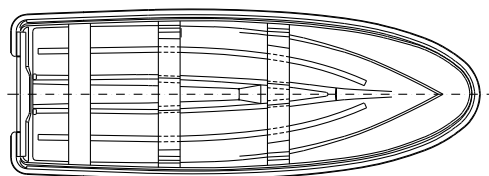
Dorado 140

Overview

The Dorado 140 is a utility craft for coastal areas, an excellent price-benefit choice that adapts to most tasks required by the users, with capacity for up to 400 kg. It requires little engine power because of its excellent hull design.

Specifications

L.O.A.	4,22 m	13,85'
B.O.A.	1,47 m	4,82'
H.O.A.	0,61 m	2,00'
Load	400 kg	882 lb.
Max. Hp.	25HP-2T	20 HP-4T
Approx. weight	158.5 kg	349 lb
Transom height	0.51 m	20"



Standard Features

- 1 FGRP-reinforced hull with white exterior paint and gray interior paint, with gray spots in the bottom.
- 2 FGRP ribs
- 1 Wood partition located aft, lined in FGRP, with drain.
- 1 Pilot seat in wood lined in FGRP located aft.
- 3 3/8" stainless steel eyebolts.
- 1 Folded and perforated aluminum transom plate.
- 1 FGRP mirror protector for one engine.
- 2 lever plug kits.

Optional accessories

- 1 FGRP removable inner shelf
- 1 Removable FGRP bulwark shelf
- 1 Polyethylene bulwark protector w/o insert
- 1 Bulwark protector with aluminum insert.
- 1 Upper color stripe on the outside of the hull,
- 1 with Selectable colors gray G2, blue Z1, green V3

Warranty

- 12-month warranty for pleasure use (intended for recreational use or personal enjoyment, not for commercial purposes).
- 6 month warranty for commercial use (all those other than pleasure).

Eduardoño S.A.S can make improvements and/or Updates of its products and its technical sheet.