



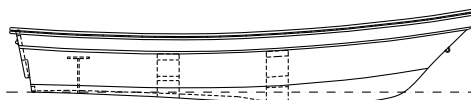
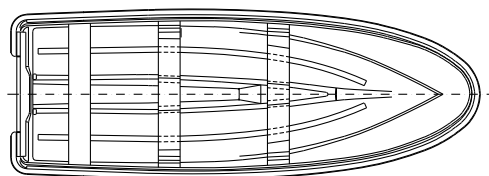
# Dorado 140

## Overview

The Dorado 140 is a utility craft for coastal areas, an excellent price-benefit choice that adapts to most tasks required by the users, with capacity for up to 400 kg. It requires little engine power because of its excellent hull design.

## Specifications

L.O.A.	4,22 m	13,85'
B.O.A.	1,47 m	4,82'
H.O.A.	0,61 m	2,00'
Load	400 kg	882 lb.
Max. Hp.	25HP-2T	20 HP-4T
Approx. weight	158.5 kg	349 lb
Transom height	0.51 m	20"



## Standard Features

- 1 FGRP-reinforced hull with white exterior paint and gray interior paint, with gray spots in the bottom.
- 2 FGRP ribs
- 1 Wood partition located aft, lined in FGRP, with drain.
- 1 Pilot seat in wood lined in FGRP located aft.
- 3 3/8" stainless steel eyebolts.
- 1 Folded and perforated aluminum transom plate.
- 1 FGRP mirror protector for one engine.
- 2 lever plug kits.

## Optional accessories

- 1 FGRP removable inner shelf
- 1 Removable FGRP bulwark shelf
- 1 Polyethylene bulwark protector w/o insert
- 1 Bulwark protector with aluminum insert.
- 1 Upper color stripe on the outside of the hull, with Selectable colors gray G2, blue Z1, green V3



Eduardoño S.A.S can make improvements and/or Updates of its products and its technical sheet.