

eduardoño

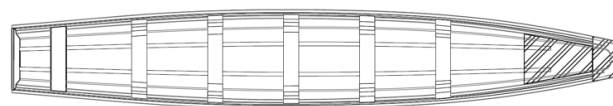
CANOE TRANSPORT BOAT 8M Ref: BTE26FURS

Description

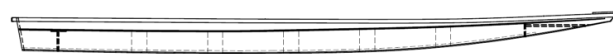
Canoe-type utility boat for use in rivers and lagoons. The hull design allows a high load capacity and efficiency in the displacement. The boat is designed and built with materials endorsed by the Colombian technical standard (NTC-ISO-12215).

Technical Specifications

L.O.A.	8 m.	26,2'
B.O.A.	1.3 m.	4,26'
H.O.A.	0,45 m.	1,47'
Load	*1.200 kg.	2,645 Lb.
Max. Hp.		**20 HP.
Approx. weight	250 kg.	551 Lb.
Transom height	0.38 m.	15"



Top View



Side View

*The payload is made up of: engines, batteries, removable accessories, people and general cargo.

*Maximum HP based on Yamaha 4-Stroke Outboard engines.

Standard Features

- 5 F.R.P. Rib frames.
- 1 F.R.P. Pilot bench.
- 1 F.R.P. Bow Deck.
- 1 Stern Tabique.
- 1 Aluminum transom protector.
- 1 F.R.P. Transom Protector.
- 1 1 ¼ drain plug.
- 3 3/8" stainless steel eyebolts.

Optional accessories

- 1 F.R.P. Removeable bench and supports.
- 1 6" Plastic cleats.
- 1 Name of boat per letter (Set of 2 letters).
- 1 Polyethylene Rubrail without aluminum insert.
- Built under ICONTEC standard norm NTC-ISO-12215

Warranty

12-month warranty for sports use (intended for recreational use or personal enjoyment, not for commercial purposes).

6-month warranty for commercial use (all those other than sports). *

Get in touch with a commercial adviser to know the conditions of the guarantee, availability of technical service and spare parts.

* The warranty validity period starts from the date the equipment is delivered and activated to the first owner / Final client.

Structural calculation under NTC ISO 12215
 Manufacturing certified under ISO 9001: 2015
 Certified manufacturing under BASC V5 standard

Eduardoño S.A.S can make improvements and/or Updates of its products and its technical sheet.

www.eduardono.com

Instagram: @eduardono_ Facebook: Eduardoño

018000 180 180

