



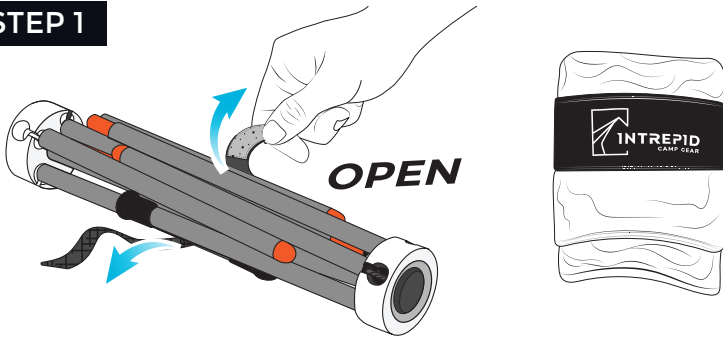
# USER MANUAL

# TXC1 CAMP CHAIR



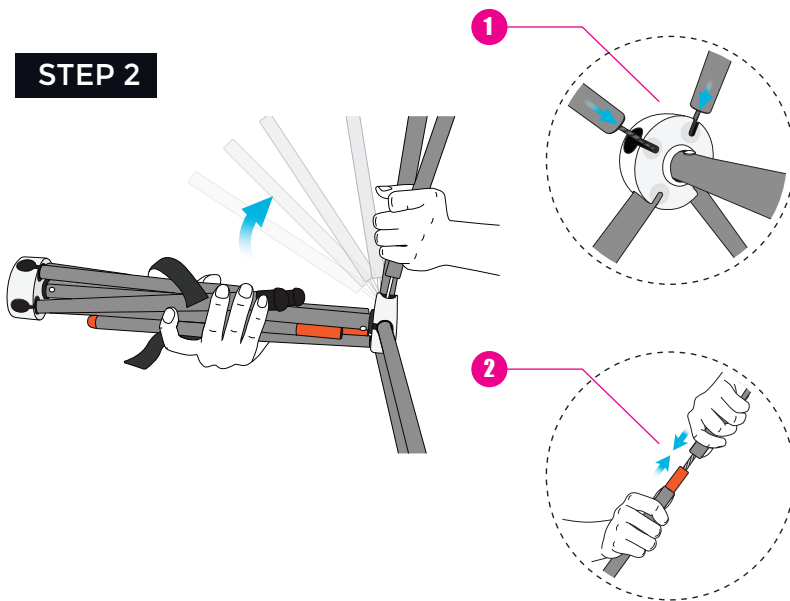
# USER MANUAL TXC1 CAMP CHAIR

## STEP 1



Remove the velcro strap.

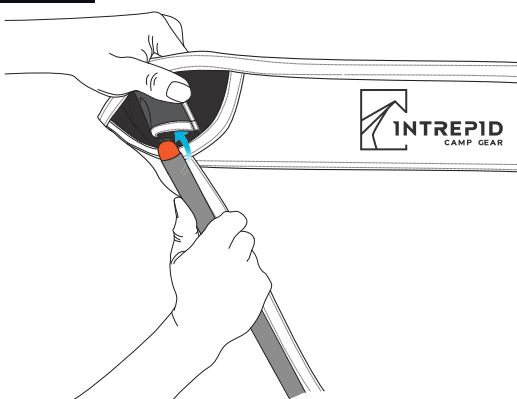
## STEP 2



Insert the legs and seat support poles into each forged aluminum hub.

**WARNING:** Watch your fingers to avoid getting pinched by the string.

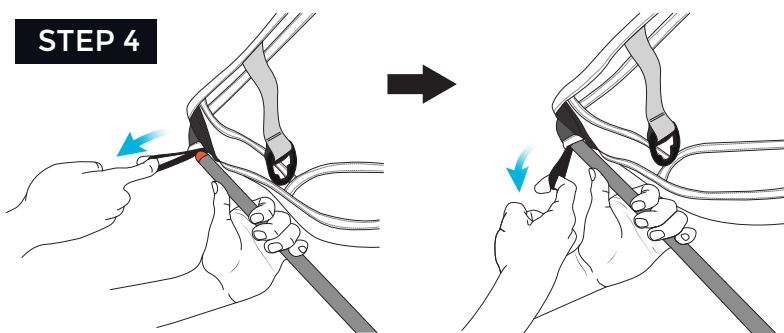
## STEP 3



After all poles are stable, install the fabric skin on top.

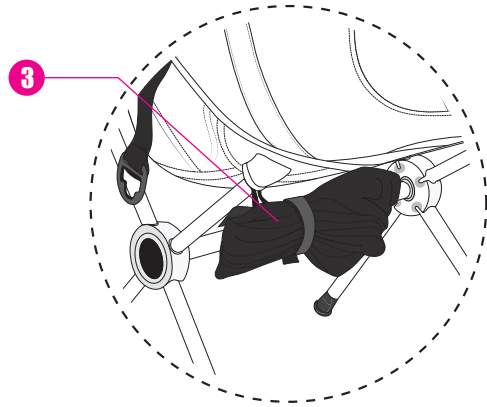
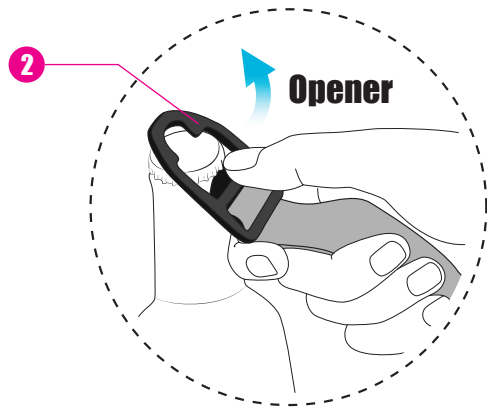
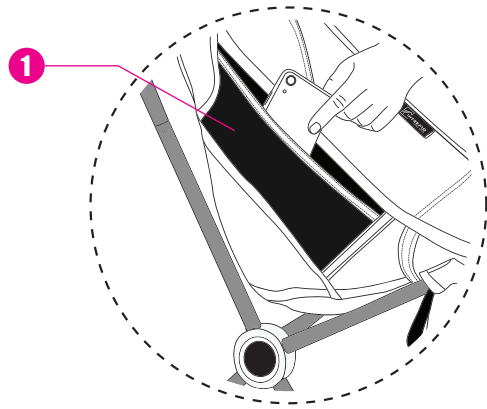
We recommend to install it from top to bottom.

## STEP 4



Use the loop on the bottom to secure skin insertion.

Double-check all connections to ensure they are tight and secure.



1. Phone pocket
2. Bottle opener
3. Roll the fabric skin and leave it here to prevent losing it.