



Part of the
 GRIMCO Family

Sign & Display Solutions
by Corplex UK

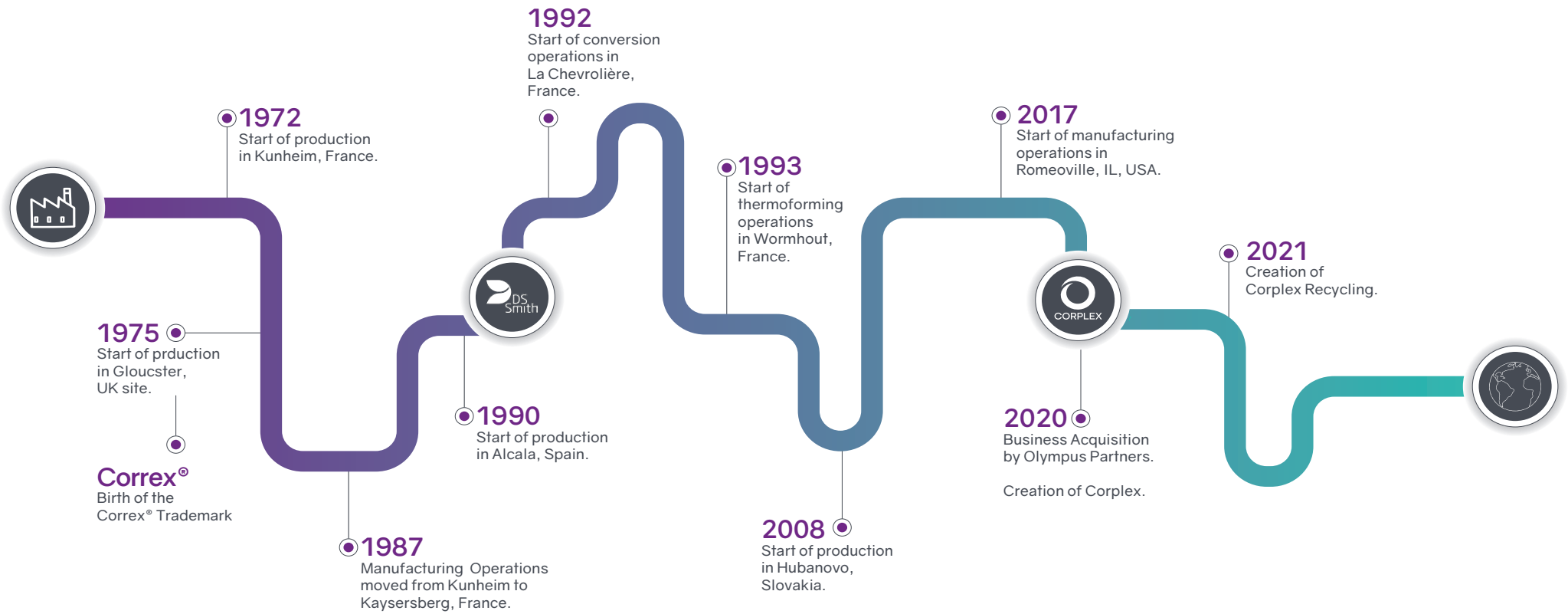
Correx[®]

Authorised Distributor





A HISTORY OF CORPLEX - MANUFACTURERS OF Correx®





WHO ARE CORPLEX?



Vision

Accelerate the transition to a circular economy for plastics



Purpose

To extend the life of plastic products through reuse and recycling



Mission

Work closely with our customers to introduce efficient solutions to reduce the impact of their business on the environment.

Our Values

Innovative at the Core

We aim to hold onto our position as the European market leader by offering innovative products and services.

Committed to a Circular Economy for Plastics

From raw material to final plastics applications, we shape customer needs into sustainable solutions for multiple industries.

At a Glance





ABOUT Correx®

Correx® is a trademarked corrugated twin walled, polypropylene sheet. The material is lightweight, robust, easily sanitised and recyclable.

It is manufactured using prime and recycled material formations and benefits from third-party certification to recognised international flame retardant standards.

Correx® is offered in sheet form, via Pyramid's 5 Branch distribution network offering next day delivery.

It is converted via our on-site manufacturing processes into our extensive range of generic and bespoke product options making it the ideal choice for a multitude of applications as well as in the Sign & Display market, including, protective sheet, packaging and much more.

Correx® FEATURES & BENEFITS

Lightweight	✓
Delivered & Stored flatpack	✓
Moisture resistant	✓
Long lifespan (10+ years)	✓
Can be cleaned & sanitised	✓
Non particulate shedding	✓
Industry standard sizes	✓
Custom sizes at low cost	✓
Recyclable	✓



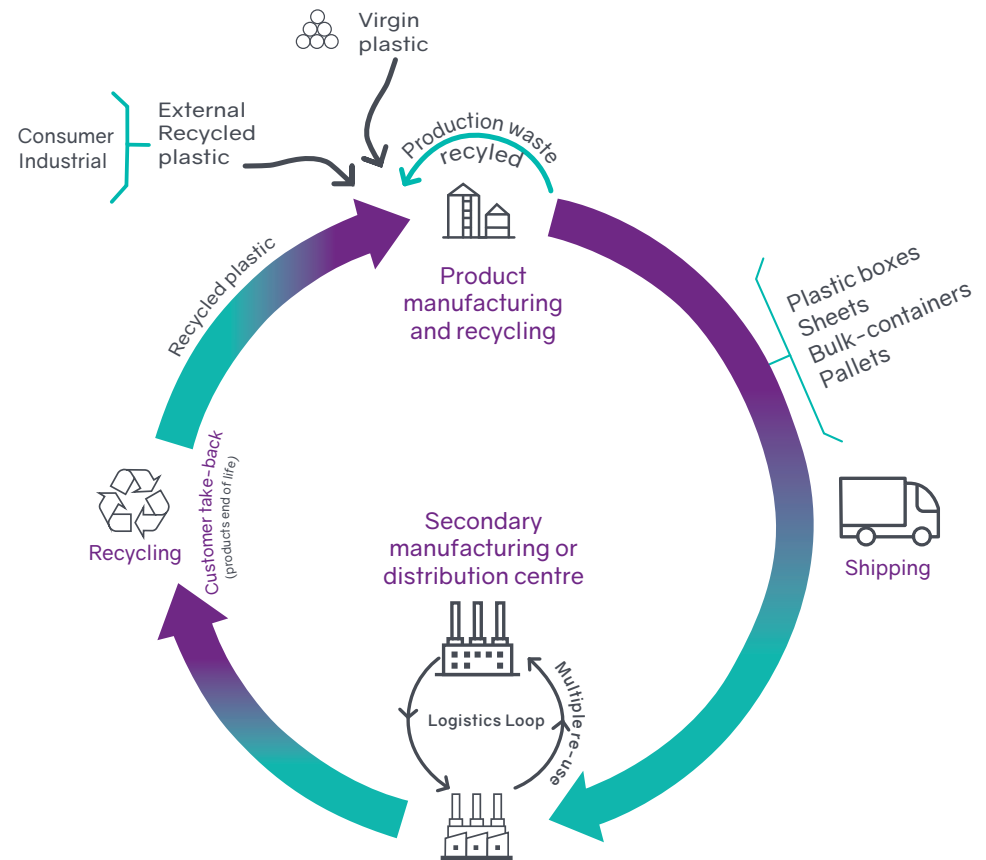
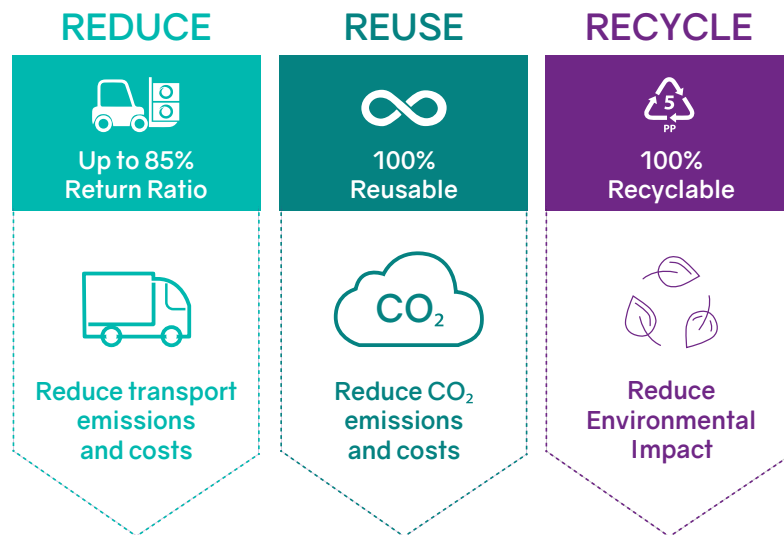


CIRCULAR ECONOMY FOR PLASTICS

Corplex is committed to striving towards a circular economy for plastics.

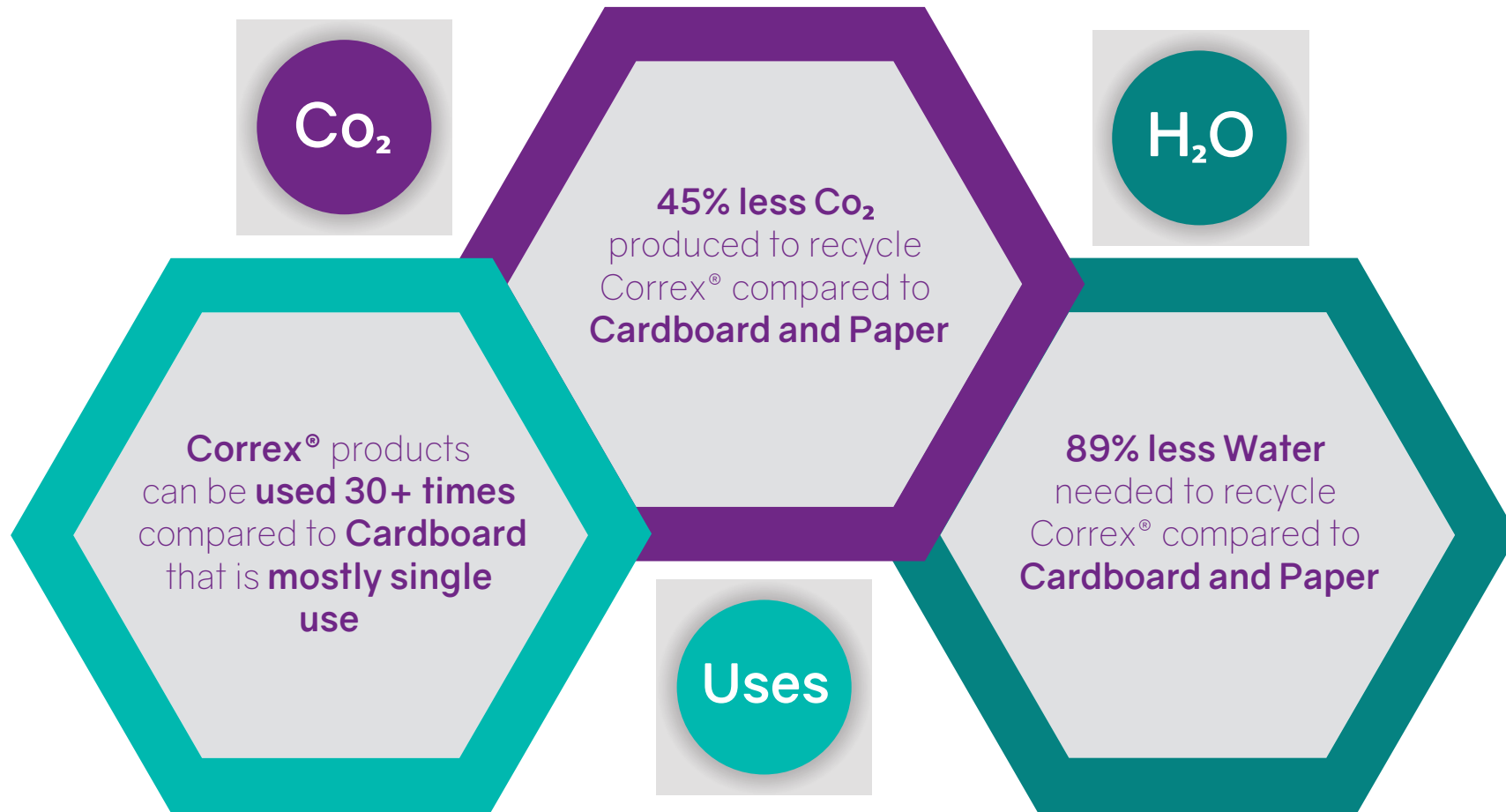
To achieve this we adopt the following core principles and encourage our customers to do so too:

- **Refuse** to use non-recyclable raw materials
- **Reduce** the amount of prime material used in production
- **Reuse** the product as many times as possible
- **Re-purpose** recycled material back into the manufacture process
- **Recycle** at the end of the products useful life, wherever possible





Correx[®] vs CARDBOARD





CURRENT MARKETS



Automotive

OEMs
Protective Packaging



Construction

Protective Sheet
Shuttering



Retail

Storage Bins
Picking Bins



Food & Beverage

Produce Boxes
Layer Pads



Pharmaceuticals

Trays
Boxes



Printing & Graphics

Signage
Point of Sale
B2C Packaging

BESPOKE Correx® SOLUTIONS

Case Study: Racing Bike Transportation Case

Corplex UK worked collaboratively with the British Cycling Team to produce a strong and lightweight transit packaging solution to safely transport high specification, custom built race bikes to the Olympic Games.





SUPPLYING THE INDUSTRY'S LEADING BRANDS



Our Branches

LONDON

Units 3 & 4
Klinger Industrial Park
Edgington Way
SIDCUP DA14 5AF
T: 020 7078 4184
E: London@pyramid-display.co.uk

MIDLANDS

Unit 5 Network Park
Duddeston Mill Road
Saltley
BIRMINGHAM B8 1AU
T: 0121 333 5947
E: BirminghamSales@pyramid-display.co.uk

NORTH WEST

Unit 5 Westpoint Enterprise Park
Clarence Avenue
Trafford Park
Manchester M17 1QS
T: 0161 872 5666
E: ManchesterSalesDesk@pyramid-display.co.uk

NORTH EAST & SCOTLAND

380 Princesway
Team Valley Trading Estate
GATESHEAD
NE11 OTU
T: 0191 487 7130
E: GatesheadSales@pyramid-display.co.uk

YORKSHIRE

Units C & D
Gilcar Way
Wakefield Europort
CASTLEFORD WF10 5QS
T: 0113 887 2199
E: YorkshireSales@pyramid-display.co.uk

www.pyramid-display.co.uk