

LED Lighting Fixture

SAVE THESE INSTRUCTIONS



BEFORE YOU BEGIN

Read and follow all safety instructions

WARNING

RISK OF FIRE, EXPLOSION AND ELECTRIC SHOCK

- This product should be installed, inspected, and maintained by a qualified electrician only, in accordance with the NEC (National Electric Code) and all local codes.
- Turn off electrical power before inspection, installation or removal.
- Use only UL (or other NRTL) approved wire for input/output connections.
- Minimum size 18 AWG or 14 AWG for continuous runs.
- Make sure LEDs and drivers are cool to touch when performing maintenance.
- Make sure the supply voltage is the same as the rated voltage of the luminaire.
- Do not install in a hazardous atmosphere, except where the ambient temperature does not exceed the rated operating temperature of the fixture.
- Keep tightly closed when in operation



Prepare Electrical Wiring



Electrical Requirements

- The LED driver must be supplied with 120 to 277V, 50/60 Hz and connected to an individual, properly grounded branch circuit protected by a 20 Ampere circuit breaker. Use min. 75°C supply.



Grounding Instructions

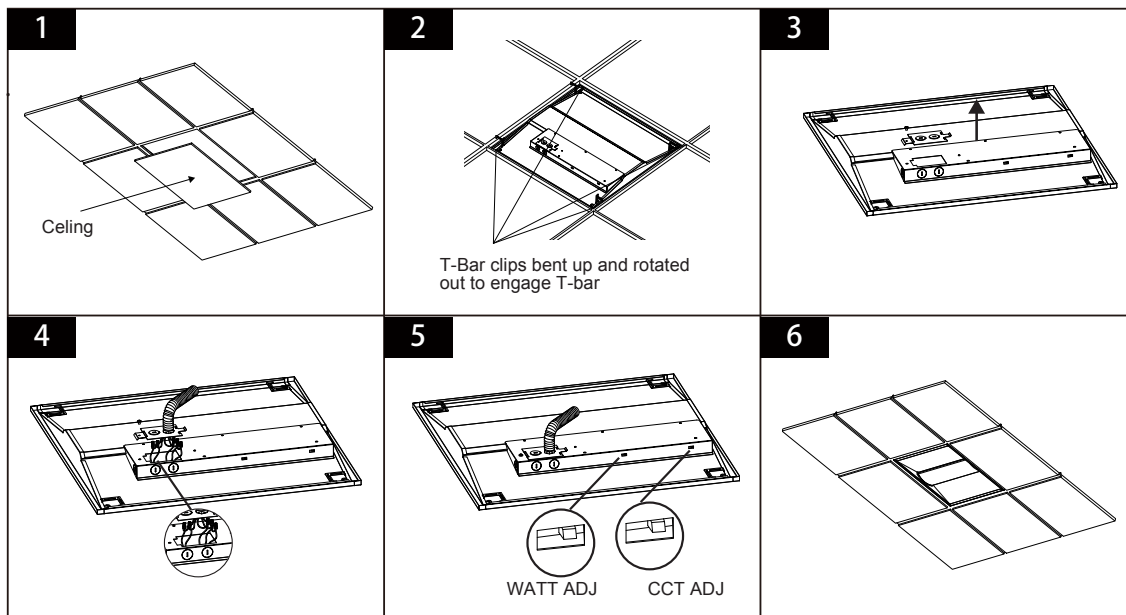
- The grounding and bonding of the overall system shall be done in accordance with NEC Article 600 and local codes

LED TROFFER LIGHTS

Installation Guide

Note: Thermal radiation space and irradiation distance must be ensured that the height of the fixture should be no less than 100mm.

1. Locate desired fixture location in ceiling grid.
2. Remove existing ceiling panel at chosen location. Remove adjacent ceiling panel to allow for wiring access from above, See **Figure 1**.
3. Place fixture into T-bar ceiling grid. Bend clips on top of fixture up and rotate out to engage with T-bar support grid, Secure fixture to grid in compliance with state and local codes, See **Figure 2**.
4. Remove screw on driver wiring chamber, disengage retention spring clip, and remove cover. Set screw and cover aside to be reinstalled later, See **Figure 3**.
5. Remove appropriate 1/2" knockout(s) to allow for entry of supply wiring into wiring chamber. Wire luminaire per "Electrical Connections" section and push all leads into the junction box, See **Figure 4**.
6. Reattach cover of wiring chamber with screw that was removed in Step 4 above, Select CCT and Wattage: 3500/4000/5000K CCT, 3 choices wattage, See **Figure 5**.
7. Replace adjacent ceiling panel removed in Step 2, Installation completed, switched on, See **Figure 6**.



ELECTRICAL CONNECTIONS

Make the following Electrical Connections:

- Connect the black fixture lead to the voltage supply Line position, Hot.
- Connect the white fixture lead to the neutral supply position.
- Connect the green ground lead or yellow green ground lead to the incoming ground lead from the conduit or screw the green ground lead to the existing troffer pan if the safety ground is made through the pan on the existing troffer.
- If 0/1-10V Dimming is used, connect the violet lead to the supply positive dimming lead. If dimming is not being used ensure to cap off the violet lead.
- If 0/1-10V Dimming is used, connect the grey or pink lead to the supply negative dimming lead. If dimming is not being used ensure to cap off the grey or pink lead.

