

## ML-PL Series

## LED PANEL LIGHTS

### DESCRIPTION

Three sizes in this LED Panel family. They are 1'x4'ft, 2'X2'ft, and 2'X4'ft dimensions. This family provides a range of wattages and color temperature to satisfy any commercial applications. Max. 40W and 40W and 50W LED Panel Lights with 3500K/4000K/5000K color selectability. Powder painted steel heavy-gauge housing, DLC and UL Listed, 5-year limited warranty



### Specification Features



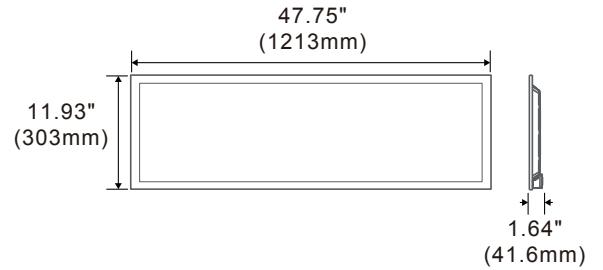
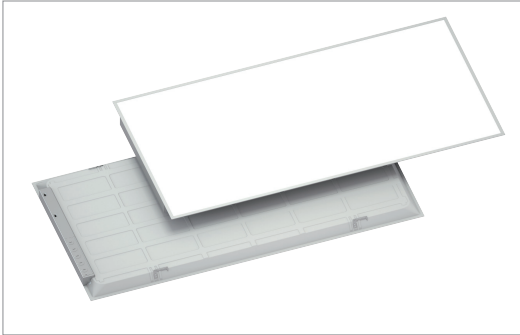
- 9 in 1 (3CCTs and 3 wattages selectable), less SKU, less inventory managing cost.
- Back-lit emitting, PMMA lens.
- Frame-less and screw-less. Cost-effective.
- Easy plug in sensor, NLC 5.0 Listed, PIR/Microwave/Bluetooth Sensor optional.
- Integrated earthquake hook, recessed and suspension installation supportable.
- Factory or Field Install EB available, 90 mins backup time, Integrated test button, easy installation.

### Ordering information

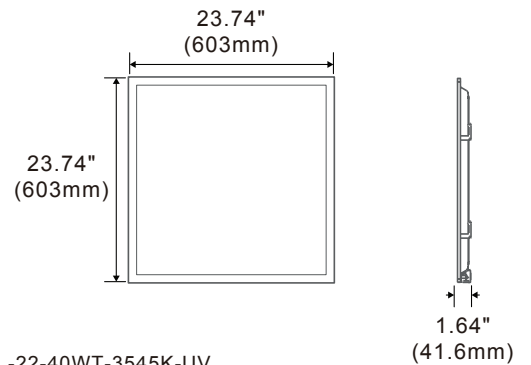
Model No.	System Watts	Input Voltage	CRI	Color Temp	Sensor Option	Finish	Starting Temp
ML-PL-14-40WT-3545K-UV	20/30/40W	120-277V	70+	3500K	P=with PIR Sensor M=with Microwave Sensor B=with Bluetooth Sensor L=with Bluetooth+ PIR Sensor	White	-40 C
ML-PL-22-40WT-3545K-UV	20/30/40W			4000K			
ML-PL-24-50WT-3545K-UV	30/40/50W			5000K			

\* DISCLAIMER: This test report was produced in accordance with IES LM-79 photometric testing protocol for luminaires, using a single representative test fixture. Actual production units may vary from the values reported here by up to ±10%.

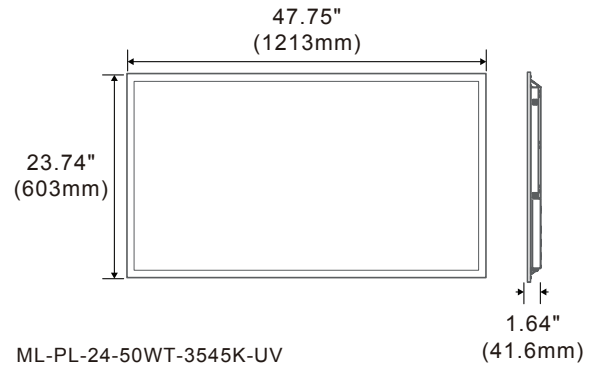
**Product Description**



ML-PL-14-40W-3545K-UV



ML-PL-22-40WT-3545K-UV



ML-PL-24-50WT-3545K-UV

**Performance Data**

\* Lumen and Efficacy shows the highest wattage at 5000K

Model NO.	System Watts	Lumens	LPW
ML-PL-14-40WT-3545K-UV	20/30/40W	5000 lm*	125 lm/w*
ML-PL-22-40WT-3545K-UV	20/30/40W	5000 lm*	125 lm/w*
ML-PL-24-50WT-3545K-UV	30/40/50W	6250 lm*	125 lm/w*

\* DISCLAIMER: This test report was produced in accordance with IES LM-79 photometric testing protocol for luminaires, using a single representative test fixture. Actual production units may vary from the values reported here by up to ±10%.