

LED Lighting Fixture

SAVE THESE INSTRUCTIONS



BEFORE YOU BEGIN

Read and follow all safety instructions

WARNING

RISK OF FIRE, EXPLOSION AND ELECTRIC SHOCK

- This product should be installed, inspected, and maintained by a qualified electrician only, in accordance with the NEC (National Electric Code) and all local codes.
- Turn off electrical power before inspection, installation or removal.
- Use only UL (or other NRTL) approved wire for input/output connections.
- Minimum size 18 AWG or 14 AWG for continuous runs.
- Make sure LEDs and drivers are cool to touch when performing maintenance.
- Make sure the supply voltage is the same as the rated voltage of the luminaire.
- Do not install in a hazardous atmosphere, except where the ambient temperature does not exceed the rated operating temperature of the fixture.
- Keep tightly closed when in operation



Prepare Electrical Wiring



Electrical Requirements

- The LED driver must be supplied with the voltage specified on the product label and connected to an individual, properly grounded branch circuit protected by a 20 Ampere circuit breaker. Use min. 75°C supply.



Grounding Instructions

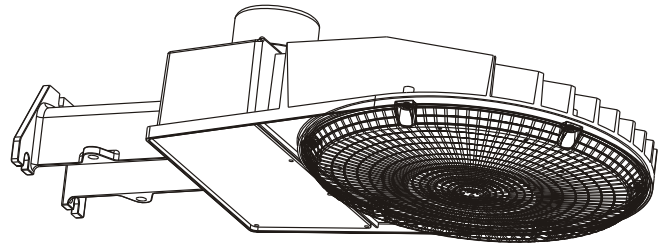
- The grounding and bonding of the overall system shall be done in accordance with NEC Article 600 and local codes

LED Dusk to Dawn

Installation Guide

Tools Required :

- Flat tip Screw Drivers
- Wire Strippers
- Wire Cutters

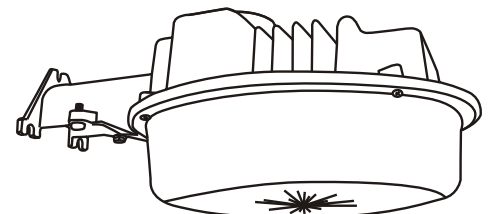
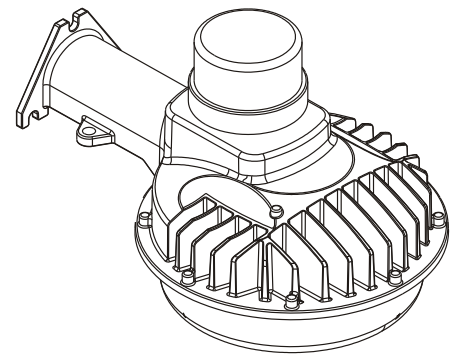


Before starting:

- Ensure that the supply power is shut off.
- Unpack the fixture and ensure that there are no damaged or missing parts.

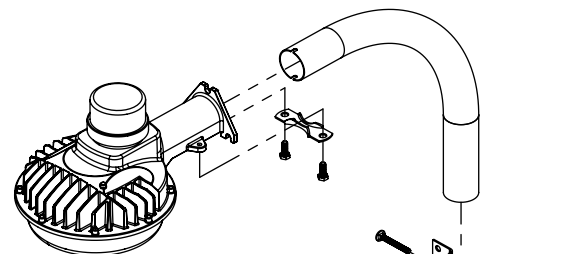
Installation Steps:

- Remove wire cover located on the underside of the fixture arm.
- Install the fixture on a wall in the desired location using the appropriate hardware for the mounting surface.
- Remove the knockout hole in the wire cover and route the power cable through the knockout.
- Connect the power leads to the supply leads using the included wire nuts as seen below. Black to Black(Hot), White to White (Neutral), and Green to Green(Ground).
- Replace the wire cover.
- If a photocell was included, insert it into the receptacle located at the top of the fixture and rotate to lock and secure the photocell in place.



If mounting with extension arm:

- Attach the 2-piece mounting bracket to the extension arm by interlocking the bracket and securing with the bolt and hex nut provided.
- Place the extension arm assembly onto the desired mounting surface and mark the four hole locations and drill into the mounting surface.
- Mount the arm assembly and tighten the bolts securely. Secure the fixture to the arm using the bracket on the fixture.



Standard Wiring Diagram

