



WARNING: THE FAILURE TO FOLLOW THESE INSTRUCTIONS WHEN INSTALLING THE PRODUCT MAY CAUSE ELECTRIC PROBLEMS IN YOUR VEHICLE WHICH COULD CAUSE VEHICLE DAMAGE, ELECTRICAL SYSTEM DAMAGE, FIRE, ELECTRICAL SHOCK, PERSONAL INJURY OR DEATH.

WARNING: DO NOT LOOK DIRECTLY INTO THE PRODUCT. DO NOT DRIVE OR POSITION YOUR VEHICLE NEAR ONCOMING TRAFFIC WHEN THE PRODUCT IS POWERED ON – DOING SO MAY RESULT IN VISION IMPAIRMENT AND OR VEHICULAR COLLISION. THE INTENDED USE OF THE PRODUCT IS TO PROVIDE EXTERIOR AUXILIARY LIGHTING FOR OFF ROAD USE ONLY. THIS PRODUCT IS NOT DOT APPROVED.

YOU MUST CONSULT YOUR VEHICLE OWNER'S MANUAL TO DETERMINE THE LOCATION OF AIRBAG SENSORS BEFORE INSTALLATION. THE MANUFACTURER OR THE RETAILER IS NOT RESPONSIBLE FOR INFLATION OF AIRBAGS OR DAMAGE TO AIRBAG SENSORS DUE TO THE INSTALLATION OF THIS PRODUCT.

INSTALLATION GUIDELINE

WARNING: SAFETY GLASSES MUST BE USED WHEN INSTALLING THIS PRODUCT.

The product is an exterior auxiliary light designed to provide auxiliary lighting while driving off road. The product has a distinct amperage draw below in the installation instructions. If you are not confident in your ability to install the product please consult a licensed mechanic.

The product has specific voltage and amperage ratings for power input and amperage draw. ENSURE THESE RATINGS ARE FOLLOWED. The product must be installed in a properly functioning vehicle electrical system. Do not install this product in a malfunctioning vehicle electrical system.

Select a mounting location that will not obstruct the operation of instruments.

Clean mounting surfaces with isopropyl alcohol (70%) and wait for the surface to dry before proceeding.

Before permanently mounting to vehicle, test fit to ensure wiring is long enough to be safely installed and does not obstruct any operating functions of the vehicle. These lights should not be installed where their operation hinders the visibility of the driver or other drivers.

WARNING: DURING OPERATION LIGHTING UNITS CAN GET HOT - DO NOT TOUCH WHILE OPERATIONAL OR WITHIN 30 MINUTES OF POWERING DOWN.

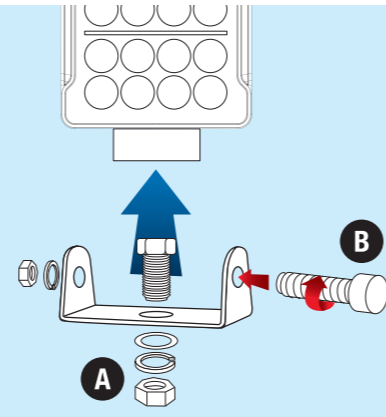
Before disconnecting battery terminals, please check your owner's manual for proper procedure.

WARNING: Cancer and Reproductive Harm - www.P65Warnings.ca.gov

1. ASSEMBLY

ATTACH MOUNTING BRACKETS AS SHOWN IN THE DIAGRAM

- PLACE THE SHORTER BOLT THROUGH THE OPENING IN THE BASE OF THE BRACKET; THIS WILL BE USED TO MOUNT THE UNIT TO THE VEHICLE
- PLACE THE LONGER BOLT THROUGH THE BRACKET AND LIGHT, AND SECURE USING THE WASHER, LOCK WASHER AND NUT

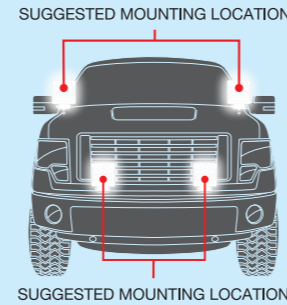


2. MOUNTING

MOUNT THE UNIT TO THE DESIRED MOUNTING LOCATION. IT IS RECOMMENDED TO CLEAN THE SURFACE OF ALL CONTAMINANTS PRIOR TO DRILLING ANY HOLES OR MOUNTING.

- IF THE DESIRED SURFACE HAS AN ADEQUATE MOUNTING HOLE, PLACE THE UNIT FLUSH WITH THE SURFACE, THREADING THE MOUNTING BOLT IN THE BRACKET THROUGH THE HOLE AND THEN TIGHTEN WITH INCLUDED WASHERS AND NUT

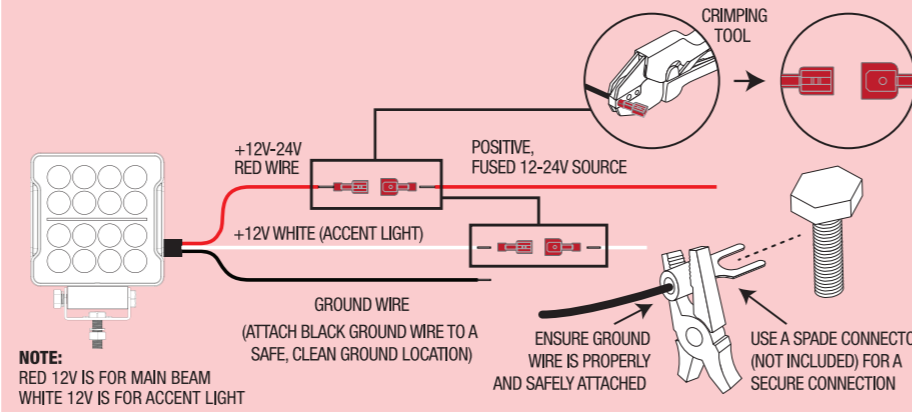
- DRILL A 3/8" HOLE IN THE SELECTED MOUNTING LOCATION IF THERE IS NO EXISTING HOLE. PLACE THE UNIT FLUSH WITH THE SURFACE, THREADING THE MOUNTING BOLT IN THE BRACKET THROUGH THE HOLE AND THEN TIGHTEN WITH INCLUDED WASHERS AND NUT



3. WIRING

MAX. POWER REQUIREMENTS SEE FIGURE 2

- ATTACH POSITIVE WIRE (RED OR WHITE) SECURELY TO A 12-24V FUSED POWER SOURCE. EXTENSION OF THE WIRING MAY BE NECESSARY DEPENDING ON LOCATION OF THE UNIT RELATIVE TO THE POWER SOURCE. CAN BE WIRED INTO A RELAY HARNESS (SEE FIGURE 1) OR A SWITCH THAT WILL SUPPORT THE ABOVE MAX POWER REQUIREMENTS. SPLICE THE RED WIRE FROM THE LIGHT FOR MAIN BEAM AND THE WHITE WIRE FOR ACCENT LIGHT. USE SUPPLIED CRIMP CONNECTOR FOR SECURE POSITIVE CONNECTION.
- ATTACH BLACK GROUND WIRE TO A SAFE, CLEAN GROUND LOCATION. EXAMPLE OF CLEAN GROUND LOCATION: CHASSIS BOLT OR FRAME BOLT.
- ENSURE ALL WIRING IS SECURE AND TUCKED AWAY FROM ANY HEAT SOURCES OR MOVING PARTS.



4. AIMING & OPERATION

ADJUST THE ANGLE OF THE LIGHT SO THE BEAM IS EVEN AND LEVEL (CONSULT DIAGRAM) THEN TIGHTEN THE MOUNTING HARDWARE ATTACHING THE UNIT TO THE MOUNTING BRACKET.

NOTE: TIGHTEN ALL MOUNTING HARDWARE BEFORE DRIVING THE VEHICLE AND CHECK TIGHTNESS AFTER 50 MILES OR 3 DAYS OF DRIVING.

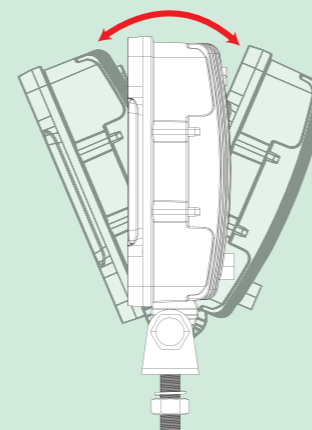
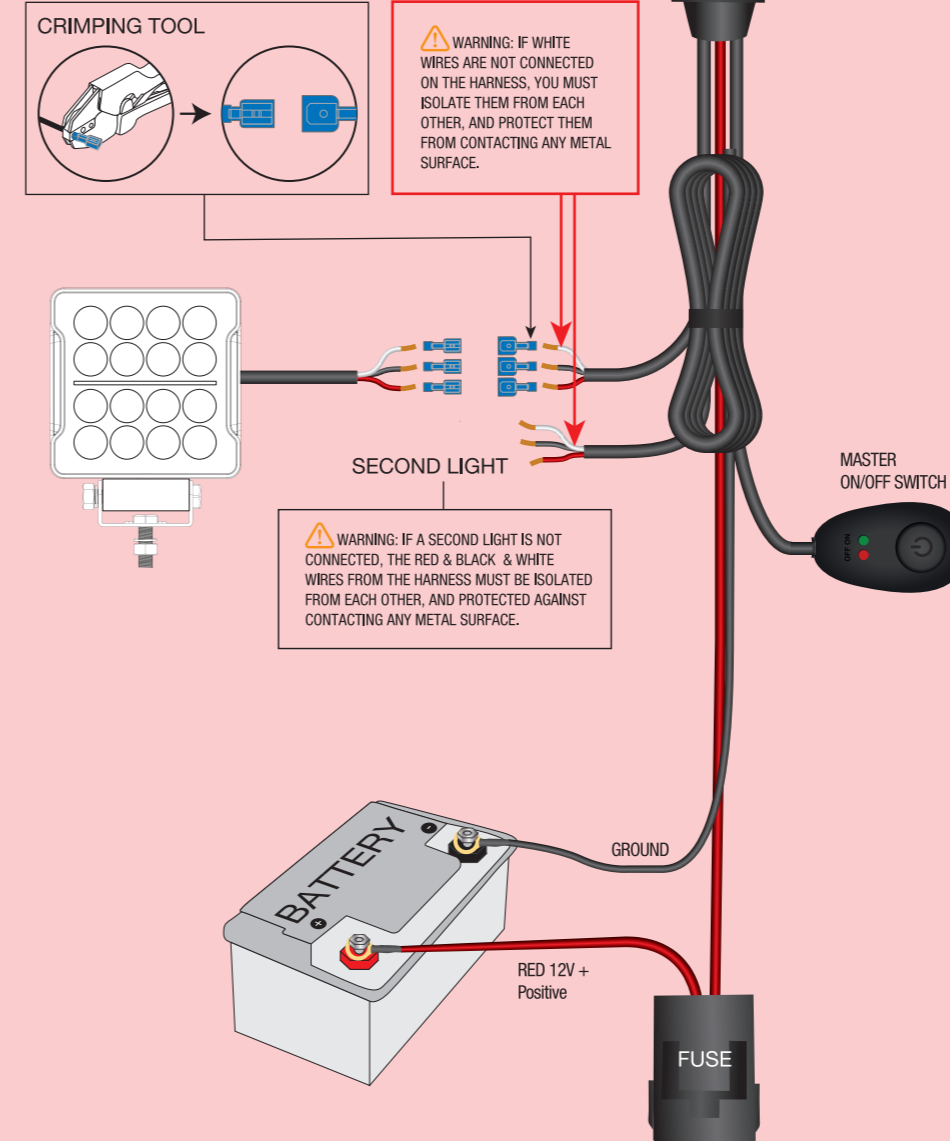


FIGURE 1. FULL WIRING DIAGRAM

Wireless Install Kit
Used for Demonstration, not included.
Item #78391



REMOTE CONTROL



- PRESS "ON" ONCE FOR 12V POWER TO WHITE WIRE ONLY ON HARNESS
- PRESS "ON" SECOND TIME FOR 12V POWER TO THE RED WIRE ONLY ON HARNESS
- PRESS "ON" THIRD TIME FOR 12V POWER TO BOTH RED & WHITE WIRES ON HARNESS
- PRESS ⚡ BUTTON TO CYCLE THROUGH THE 6 FLASH FUNCTIONS
- TO CANCEL STROBING PRESS "ON"
- PRESS STROBE BUTTON TO CYCLE THROUGH THE 6 FLASH FUNCTIONS
- TO CANCEL STROBING PRESS "ON"

FCC ID: 2AMN5-78391

FIGURE 2. MAXIMUM POWER REQUIREMENT CHART

PART #	PRODUCT NAME	VOLTAGE	Amp @ 12V DC	Watts @ 12V DC
71096	TrekTec Bar D42P	12-24V DC	12.9A	155W
71097	TrekTec Bar D52P	12-24V DC	16.7A	200W
71105	TrekTec POD XL16P	12-24V DC	1.75A	21W
72011	TrekTec POD XL10P	12-24V DC	1.4A	16.8W
72016	TrekTec POD R14P	12-24V DC	4A	48W
72017	TrekTec POD XLR14P	12-24V DC	6.9A	82.8W
71102	TrekTec BAR S42P	12-24V DC	10.70A	128.4W
71107	TrekTec BAR 4PF	12-24V DC	1.2A	14.4W

ALPENA® LIMITED WARRANTY

This Limited Warranty covers defects in materials or workmanship of this product for one (1) year from the date of purchase. Normal wear and tear over time are not product defects. Product problems caused by not following the product instructions, abuse, misuse, alteration, accident and/or use beyond the product's intended purpose are not covered. This warranty is valid for the original owner and is not transferable. Proof of purchase is required.

Any implied warranties and conditions, such as merchantability and fitness for a particular purpose are hereby excluded, or if not excludable under law, are limited to one (1) year period. Some jurisdictions do not allow limitations on how long an implied warranty lasts, so this limitation may not apply to you

NO INCIDENTAL, CONSEQUENTIAL OR SPECIAL DAMAGES ARE RECOVERABLE. SOME JURISDICTIONS DO NOT ALLOW THE EXCLUSION OF INCIDENTAL, CONSEQUENTIAL OR SPECIAL DAMAGES, SO THE ABOVE LIMITATION OR EXCLUSION MAY NOT APPLY TO YOU. THIS WARRANTY GIVES YOU SPECIFIC LEGAL RIGHTS AND YOU MAY HAVE OTHER RIGHTS WHICH VARY DEPENDING ON THE JURISDICTION.

We will replace any product we determine to be defective provided you follow our product return directions. Please note that replacement product may not be exact due to style changes to our products. We will cover the mailing expense to send you a replacement product. However, mailing costs to return to us the original product which is claimed to be defective must be paid by you. If a replacement product is not available at the time you submit your warranty request, we will issue a credit.

For warranty service, please see below.

NORTH AMERICAN SUPPORT AVAILABLE



@AlpenaAutomotive
1-800-387-3217