



# 24IN STARTER KITS - MAX OR 5M BULK ROLLS - MAX

**WARNING: THE FAILURE TO FOLLOW THESE INSTRUCTIONS WHEN INSTALLING THE LED STRIPS MAY CAUSE ELECTRIC PROBLEMS IN YOUR VEHICLE WHICH COULD CAUSE VEHICLE DAMAGE, ELECTRICAL SYSTEM DAMAGE, FIRE, ELECTRICAL SHOCK, PERSONAL INJURY OR DEATH.**

## INSTALLATION GUIDELINE

This product has a distinct amperage draw and power input rating below in the installation instructions. THIS RATING MUST BE FOLLOWED. If you are not confident in your ability to install the Alpena® LED strips (the "product"), please consult a licensed mechanic. The product must be installed in a properly functioning vehicle electrical system. Do not install this product in a malfunctioning vehicle electrical system. Do not modify the product in a way that is not intended in the instructions below.

The intended use of these strips is to provide accent & auxiliary lighting for off road use only. This product is not DOT approved.

## WARNING: Safety glasses must be used when installing this product

Strip Modification (diagram)

1. If you wish to cut the strip down to a specific size or to utilize the contact points to join two sections use a pair of scissors along the section of the LED, between the bronze contact points, and cut right on the scissors marking.
2. If you wish to join two cut sections of LED strip, carefully use a hobby knife to remove the clear protective coating above the bronze contact points in the LED strip – DO NOT DAMAGE THE CONTACT POINTS.
3. Use either a section of the included power wire or automotive wire of the similar size and gauge to join strips and heat shrink tubing to seal connections.
4. Solder stripped ends of the wire to the bronze contact points ensuring the positive and negative contacts correspond to the right wires.
5. Seal the connection with heat shrink tubing using a hair dryer or a heat gun on a low setting.

## INSTALLATION INSTRUCTIONS

12 VOLT USE ONLY

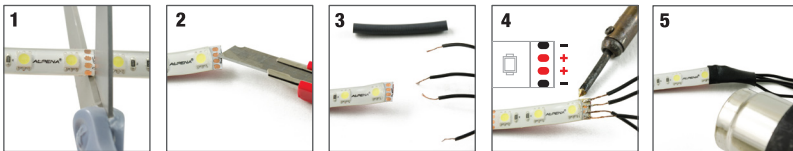
For best results, temperature at installation should be between 65-90°F (18-32°C).

1. Clean mounting surfaces with isopropyl alcohol (70%) and wait for the surface to dry before proceeding
2. Test fit into intended location
3. Carefully remove adhesive back and firmly press into intended location
4. Clear protective surface of LED strips are temperature sensitive and in cold weather the LED strip or installation surface should be warmed with a hairdryer.
5. Before connecting to power, ensure all strips are connected and the AlpenaLINK™ clip is secure on both the power connection and if other strips are connected
6. Plug power connector into a 12V outlet capable of 2A draw and press the red power button to test operation

## WARRANTY

The manufacturer warrants the AlpenaLINK™ products when they are properly installed, connected, and operated, for a period of 1 year from the date of purchase. The warranty is void and neither the manufacturer nor the retailer is responsible for any product failure, damage, or injury if these instructions are not strictly followed.

**⚠ WARNING: Cancer and Reproductive Harm - www.P65Warnings.ca.gov**



## MAXIMUM POWER REQUIREMENT CHART

PART #	PRODUCT NAME	VOLTAGE	Amp @ 12V DC	Watts @ 12V DC
78394	24in Starter Kits - MAX Blue	12V DC only	0.4A PER 12in	4.8W PER 12in
78395	24in Starter Kits - MAX White	12V DC only	0.41A PER 12in	4.9W PER 12in
78396	24in Starter Kits - MAX Red	12V DC only	0.38A PER 12in	4.56W PER 12in
78397	24in Starter Kits - MAX Purple	12V DC only	0.48A PER 12in	5.76W PER 12in
78398	24in Starter Kits - MAX Green	12V DC only	0.43A per 12in	5.16W PER 12in
78399	24in Starter Kits - MAX Fuschia	12V DC only	0.48A per 12in	5.76W PER 12in
78403	24in Starter Kits - MAX Amber	12V DC only	2.20A	26.4W
78404	5M Bulk Rolls - Max Blue	12V DC only	1.90A	22.8W
78405	5M Bulk Rolls - Max White	12V DC only	3.0A	36W
78407	5M Bulk Rolls - Max Red	12V DC only	2.25A	27W
78408	5M Bulk Rolls - Max Purple	12V DC only	2.25A	27W
78409	5M Bulk Rolls - Max Green	12V DC only	2.20A	26.4W
78410	5M Bulk Rolls - Max Fuschia	12V DC only	2.20A	26.4W
78411	5M Bulk Rolls - Max Amber	12V DC only	2.20A	26.4W



NOTE: Do not bend the LED strips in a radius of less than 5/8" (15mm) or circuit traces will be damaged and void warranty.



NOTE: Do not bend LED strips on horizontal plane, this will damage circuit traces and void warranty.

3M™ is a trademark of 3M™ Company

Marklyn Group Inc. 753011 2nd line EHS Mono, ON, Canada L9W 5W4  
Alpena® is a registered trademark of Marklyn Group Inc. © Copyright 2022  
Made in China

**WE CAN HELP**  
Installation support available



@AlpenaAutomotive  
#AlpenaAutomotive  
1-800-387-3217