



TAILGATE LED STRIP XL

PART #: 78461

⚠ WARNING: THE FAILURE TO FOLLOW THESE INSTRUCTIONS WHEN INSTALLING THE TAILGATE LED STRIP XL MAY CAUSE ELECTRIC PROBLEMS IN YOUR VEHICLE WHICH COULD CAUSE VEHICLE DAMAGE, ELECTRICAL SYSTEM DAMAGE, FIRE, ELECTRICAL SHOCK, PERSONAL INJURY OR DEATH.

⚠ WARNING: DO NOT LOOK DIRECTLY INTO THE TAILGATE LED STRIP XL. DO NOT DRIVE OR POSITION YOUR VEHICLE NEAR ONCOMING TRAFFIC WHEN THE TAILGATE LED STRIP XL IS POWERED ON – DOING SO MAY RESULT IN VISION IMPAIRMENT AND OR VEHICULAR COLLISION. THE INTENDED USE OF THE TAILGATE LED STRIP XL IS TO PROVIDE EXTERIOR AUXILIARY LIGHTING FOR OFF ROAD USE ONLY. THIS PRODUCT IS NOT DOT APPROVED.

YOU MUST CONSULT YOUR VEHICLE OWNER'S MANUAL TO DETERMINE THE LOCATION OF AIRBAG SENSORS BEFORE INSTALLATION. THE MANUFACTURER OR THE RETAILER IS NOT RESPONSIBLE FOR INFLATION OF AIRBAGS OR DAMAGE TO AIRBAG SENSORS DUE TO THE INSTALLATION OF THIS PRODUCT.
INSTALLATION GUIDELINE

⚠ WARNING: SAFETY GLASSES MUST BE USED WHEN INSTALLING THIS PRODUCT.

Tailgate LED Strip XL is an auxiliary light designed to provide exterior auxiliary and accent lighting while driving off road. Tailgate LED Strip XL has a distinct amperage draw below in the installation instructions. If you are not confident in your ability to install the Tailgate LED Strip XL please consult a licensed mechanic.

Tailgate LED Strip XL has specific voltage and amperage ratings for power input and amperage draw. ENSURE THESE RATINGS ARE FOLLOWED. The Tailgate LED Strip XL must be installed in a properly functioning vehicle electrical system. Do not install this product in a malfunctioning vehicle electrical system.

Select a mounting location that will not obstruct the operation of any vehicle functions

Clean mounting surfaces with isopropyl alcohol (70%) and wait for the surface to dry before proceeding.

Before permanently mounting to vehicle, test fit to ensure wiring is long enough to be safely installed and does not obstruct any operating functions of the vehicle. These lights should not be installed where their operation hinders the visibility of the driver or other drivers

⚠ WARNING: DURING OPERATION LIGHTING UNITS CAN GET HOT - DO NOT TOUCH WHILE OPERATIONAL OR WITHIN 30 MINUTES OF POWERING DOWN.

Before disconnecting battery terminals, please check your owner's manual for proper procedure.

LIMITED WARRANTY

The manufacturer warrants this product when it is properly installed, connected, and operated, for a period of one (1) year from the date of purchase by the original purchaser. The warranty is void and neither the manufacturer nor the retailer is responsible for any product failure, damage, or injury if these instructions are not strictly followed.

⚠ WARNING: Cancer and Reproductive Harm - www.P65Warnings.ca.gov

ALPENA® LIMITED WARRANTY

This Limited Warranty covers defects in materials or workmanship of this product for one (1) year from the date of purchase. Normal wear and tear over time are not product defects. Product problems caused by not following the product instructions, abuse, misuse, alteration, accident and/or use beyond the product's intended purpose are not covered. This warranty is valid for the original owner and is not transferable. Proof of purchase is required.

Any implied warranties and conditions, such as merchantability and fitness for a particular purpose are hereby excluded, or if not excludable under law, are limited to one (1) year period. Some jurisdictions do not allow limitations on how long an implied warranty lasts, so this limitation may not apply to you

NO INCIDENTAL, CONSEQUENTIAL OR SPECIAL DAMAGES ARE RECOVERABLE. SOME JURISDICTIONS DO NOT ALLOW THE EXCLUSION OF INCIDENTAL, CONSEQUENTIAL OR SPECIAL DAMAGES, SO THE ABOVE LIMITATION OR EXCLUSION MAY NOT APPLY TO YOU. THIS WARRANTY GIVES YOU SPECIFIC LEGAL RIGHTS AND YOU MAY HAVE OTHER RIGHTS WHICH VARY DEPENDING ON THE JURISDICTION.

We will replace any product we determine to be defective provided you follow our product return directions. Please note that replacement product may not be exact due to style changes to our products. We will cover the mailing expense to send you a replacement product. However, mailing costs to return to us the original product which is claimed to be defective must be paid by you. If a replacement product is not available at the time you submit your warranty request, we will issue a credit.

For warranty service, please see below.

NORTH AMERICAN
SUPPORT AVAILABLE



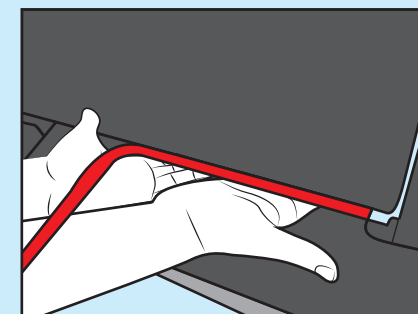
@AlpenaAutomotive
1-800-387-3217

1. MOUNTING

FOR BEST RESULTS, TEMPERATURE AT INSTALLATION SHOULD BE BETWEEN 65-90 DEGREES FAHRENHEIT

VERIFY THE STRIP IS PLACED IN THE CORRECT ORIENTATION BY TESTING THE LIGHT SIGNALING TO ENSURE PROPER FUNCTIONALITY. NOTE: THE WIRE SHOULD BE COMING FROM THE PASSANGER SIDE OF THE VEHICLE.

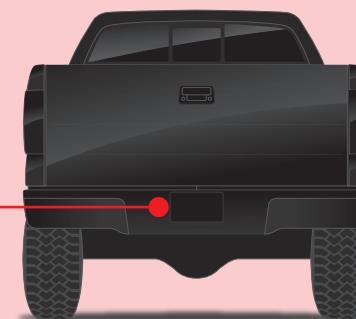
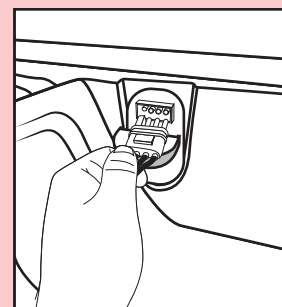
- CLEAN MOUNTING SURFACES WITH ISOPROPYL ALCOHOL (70%) AND WAIT FOR THE SURFACE TO DRY BEFORE PROCEEDING
- TEST FIT INTO INTENDED LOCATION, ENSURING WIRING IS LONG ENOUGH, CENTERED AND DOES NOT INTERFERE WITH ANY VEHICLE FUNCTIONS
- CAREFULLY REMOVE RED TAPE PROTECTING THE ADHESIVE
- GENTLY PRESS INTO PLACE, TAKING CARE NOT TO APPLY EXCESSIVE PRESSURE TO LED CHIPS



2. WIRING

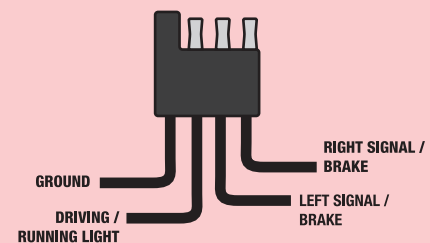
POWER REQUIREMENTS 0.67A @ 12V DC

- CONNECT THE 4 PIN END OF THE TAILGATE LED STRIP INTO THE 4 PIN TRAILER HARNESS COMING FROM THE VEHICLE



- STICK THE STRIP TO THE BACK OF THE TAILGATE.

NOTE: THE WIRE SHOULD BE COMING FROM THE PASSANGER SIDE OF THE VEHICLE.



3M™ is a trademark of 3M™ Company

Markdyn Group Inc. 753011 2nd line EHS Mono, ON, Canada L9W 5W4
Alpena® is a registered trademark of Markdyn Group Inc. © Copyright 2022
Made in China