



# WIRELESS INSTALL KIT PART #: 78393

## INSTALLATION INSTRUCTIONS

Wireless Install Kit is a wiring harness designed to connect any automotive accessory that functions on 12V DC to a power source (typically the vehicle battery). The relay, switch and wiring have a distinct maximum amperage noted below and on the relay.

If you are not confident in your ability to install the Wireless Install Kit, please consult a licensed mechanic.

**WARNING: FAILURE TO FOLLOW THESE INSTRUCTIONS WHEN INSTALLING THE INSTALKIT PLUS MAY CAUSE ELECTRIC PROBLEMS IN YOUR VEHICLE WHICH COULD CAUSE VEHICLE DAMAGE, ELECTRICAL SYSTEM DAMAGE, FIRE, ELECTRICAL SHOCK, PERSONAL INJURY OR DEATH.**

### INSTALLATION GUIDELINE

The relay and wiring has specific voltage and amperage ratings for power input. DO NOT EXCEED THESE RATINGS. The kit must be installed in a properly functioning vehicle electrical system. It is the user's responsibility to connect functional and compatible 12V accessories using this kit. The intended use of this kit is to connect power to 12V DC automotive accessories within the amperage ratings provided. These ratings must be followed. Do not connect a malfunctioning 12V accessory using the kit.

Before permanently mounting bracket to vehicle, test fit to ensure optimal beam pattern, height, and width and that wiring is long enough to be safely installed and does not obstruct any operating functions of the vehicle. These lights should not be installed whereby the operation hinders the visibility of the driver or other drivers.

### INSTALLATION STEPS

1. Test fit to ensure adequate wire length, proper aiming of light output, and correct location before connecting to light and battery.
2. Connect the RED 12V + from the lights to the RED 12V + wire as shown in the diagram using the provided crimp connector.
3. Connect the BLACK ground wire from the lights to the BLACK wire of the harness as shown in the diagram using the provided crimp connector.
4. Connect the OPTIONAL WHITE 12V + from the harness to the WHITE 12V + or accent power wire on the light if applicable for your install. If not used isolate these wires from each other and any metal surfaces.
5. Ensure all wire connections are secure and safe - take care to seal connections to prevent damage from the elements and to prevent contact with any other wires or surfaces.
6. Prepare your car for installation by disconnecting the battery. Follow the procedure in your owner's manual and always disconnect the ground (BLACK or '-') terminal first, followed by the positive (RED or '+') wire. Reconnect in reverse order.
7. Run the switch harness wiring into the cabin through a grommet of the hole in the engine bay, unplug the connection if needed.
8. Find a mounting location for the master power switch clean the surface and peel and stick the switch. Note that this switch will only turn ON and OFF power it will not control the other functions. Use the wireless remote for other functions.
9. Reconnect your batteries ground Negative (BLACK or '-') along with the BLACK Ring terminal from the harness. Make sure the terminal connections are secure and clean.
10. Reconnect your batteries Positive (RED or '+') along with the RED 12V+ Ring terminal from the harness. Make sure the terminal connections are secure and clean.
11. Power on your vehicle to test and align the lighting units.

### FCC CERTIFICATIONS

This equipment has been tested and found to comply with the limits for a Class B digital device, pursuant to part 15 of the FCC Rules. These limits are designed to provide reasonable protection against harmful interference when the equipment is operated in a commercial environment. This equipment generates, uses, and can radiate radio frequency energy and, if not installed and use in accordance with the with the instruction manual, may cause harmful interference to radio communications.

This device complies with Part 15 of the FCC Rules. Operation is subject to the following two conditions: (1) this device may not cause harmful interference, and (2) this device must accept any interference received; including interference that may cause undesired operation.

**WARNING: Cancer and Reproductive Harm - www.P65Warnings.ca.gov**

### ALPENA® LIMITED WARRANTY

This Limited Warranty covers defects in materials or workmanship of this product for one (1) year from the date of purchase. Normal wear and tear over time are not product defects. Product problems caused by not following the product instructions, abuse, misuse, alteration, accident and/or use beyond the product's intended purpose are not covered. This warranty is valid for the original owner and is not transferable. Proof of purchase is required.

Any implied warranties and conditions, such as merchantability and fitness for a particular purpose are hereby excluded, or if not excludable under law, are limited to one (1) year period. Some jurisdictions do not allow limitations on how long an implied warranty lasts, so this limitation may not apply to you

NO INCIDENTAL, CONSEQUENTIAL OR SPECIAL DAMAGES ARE RECOVERABLE. SOME JURISDICTIONS DO NOT ALLOW THE EXCLUSION OF INCIDENTAL, CONSEQUENTIAL OR SPECIAL DAMAGES, SO THE ABOVE LIMITATION OR EXCLUSION MAY NOT APPLY TO YOU. THIS WARRANTY GIVES YOU SPECIFIC LEGAL RIGHTS AND YOU MAY HAVE OTHER RIGHTS WHICH VARY DEPENDING ON THE JURISDICTION.

We will replace any product we determine to be defective provided you follow our product return directions. Please note that replacement product may not be exact due to style changes to our products. We will cover the mailing expense to send you a replacement product. However, mailing costs to return to us the original product which is claimed to be defective must be paid by you. If a replacement product is not available at the time you submit your warranty request, we will issue a credit.

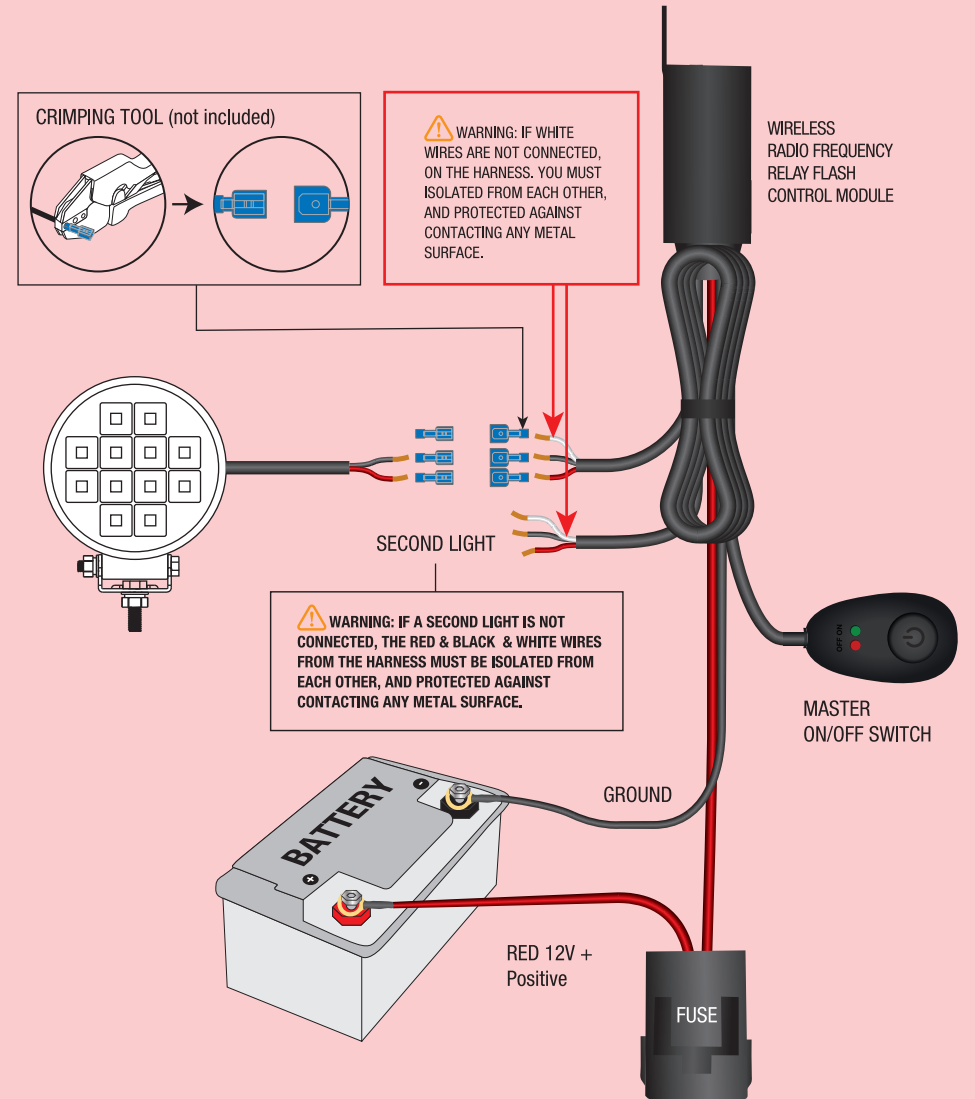
For warranty service, please see below.

NORTH AMERICAN  
SUPPORT AVAILABLE



@AlpenaAutomotive  
1-800-387-3217

## FIGURE 1. FULL WIRING DIAGRAM



### REMOTE CONTROL



- PRESS "ON" ONCE FOR 12V POWER TO WHITE WIRE ONLY ON HARNESS
- PRESS "ON" SECOND TIME FOR 12V POWER TO THE RED WIRE ONLY ON HARNESS
- PRESS "ON" THIRD TIME FOR 12V POWER TO BOTH RED & WHITE WIRES ON HARNESS
- PRESS ⚡ BUTTON TO CYCLE THROUGH THE 6 FLASH FUNCTION
- TO CANCEL STROBING PRESS "ON"
- PRESS STROBE BUTTON TO CYCLE THROUGH THE 6 FLASH FUNCTION
- TO CANCEL STROBING PRESS "ON"

FCC ID: 2AMN5-78391