

# ALPENA®

## LED CLAMP SOLO™ PART #: 78069

**⚠ WARNING: DO NOT OPERATE YOUR VEHICLE WITHOUT ENSURING THE LED CLAMP SOLO AND ANY PRODUCT ATTACHED USING THE LED CLAMP SOLO IS SECURE – DOING SO MAY RESULT IN VISION IMPAIRMENT, VEHICLE DAMAGE, AND OR VEHICULAR COLLISION.**

**⚠ WARNING: THE INTENDED USE OF THE LED CLAMP SOLO IS TO PROVIDE A MOUNTING BRACKET FOR EXTERIOR AUXILIARY LIGHTING DESIGNED FOR OFF ROAD USE ONLY. THIS PRODUCT IS NOT DOT APPROVED.**

YOU MUST CONSULT YOUR VEHICLE OWNER'S MANUAL TO DETERMINE THE LOCATION OF AIRBAG SENSORS BEFORE INSTALLATION. THE MANUFACTURER OR THE RETAILER IS NOT RESPONSIBLE FOR INFLATION OF AIRBAGS OR DAMAGE TO AIRBAG SENSORS DUE TO THE INSTALLATION OF THIS PRODUCT.

### INSTALLATION GUIDELINE

**⚠ WARNING: SAFETY GLASSES MUST BE USED WHEN INSTALLING THIS PRODUCT.**

Select a mounting location that will not obstruct the operation of instruments.

Clean mounting surfaces with isopropyl alcohol (70%) and wait for the surface to dry before proceeding.

Before permanently mounting to vehicle, test fit to ensure wiring is long enough to be safely installed and does not obstruct any operating functions of the vehicle. These lights should not be installed where their operation hinders the visibility of the driver or other drivers

### ALPENA® LIMITED WARRANTY

This Limited Warranty covers defects in materials or workmanship of this product for one (1) year from the date of purchase. Normal wear and tear over time are not product defects. Product problems caused by not following the product instructions, abuse, misuse, alteration, accident and/or use beyond the product's intended purpose are not covered. This warranty is valid for the original owner and is not transferable. Proof of purchase is required.

Any implied warranties and conditions, such as merchantability and fitness for a particular purpose are hereby excluded, or if not excludable under law, are limited to one (1) year period. Some jurisdictions do not allow limitations on how long an implied warranty lasts, so this limitation may not apply to you

NO INCIDENTAL, CONSEQUENTIAL OR SPECIAL DAMAGES ARE RECOVERABLE. SOME JURISDICTIONS DO NOT ALLOW THE EXCLUSION OF INCIDENTAL, CONSEQUENTIAL OR SPECIAL DAMAGES, SO THE ABOVE LIMITATION OR EXCLUSION MAY NOT APPLY TO YOU. THIS WARRANTY GIVES YOU SPECIFIC LEGAL RIGHTS AND YOU MAY HAVE OTHER RIGHTS WHICH VARY DEPENDING ON THE JURISDICTION.

We will replace any product we determine to be defective provided you follow our product return directions. Please note that replacement product may not be exact due to style changes to our products. We will cover the mailing expense to send you a replacement product. However, mailing costs to return to us the original product which is claimed to be defective must be paid by you. If a replacement product is not available at the time you submit your warranty request, we will issue a credit.

For warranty service, please see below.

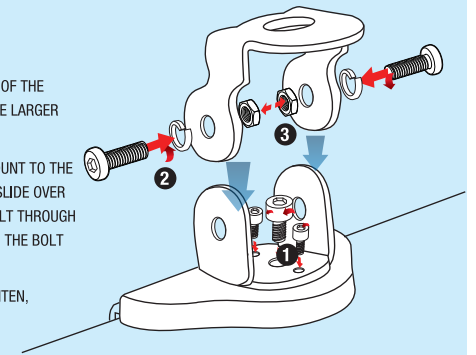
**WE CAN HELP**  
Installation support available



@AlpenaAutomotive  
#AlpenaAutomotive  
1-800-387-3217

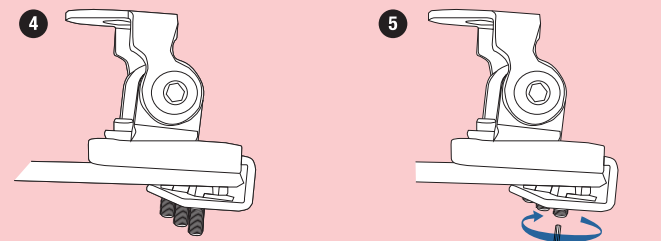
## 1. ASSEMBLY

1. ATTACH THE BOTTOM PORTION OF THE MOUNT TO THE PLATE PORTION OF THE MOUNT BY INSTALLING THE TWO SMALL ADJUSTMENT SCREWS AND THE LARGER ADJUSTMENT SCREW
2. TAKE THE TWO LARGEST BOLTS AND SECURE THE TOP HALF OF THE MOUNT TO THE BOTTOM HALF OF THE MOUNT. THE TOP HALF OF THE MOUNT SHOULD SLIDE OVER TOP OF THE BOTTOM HALF; ALIGN THE TWO HOLES AND SLIDE EACH BOLT THROUGH ON EITHER SIDE, ENSURING THE INCLUDED CRUSH WASHER IS BETWEEN THE BOLT HEAD AND THE BODY OF THE TOP ASSEMBLY.
3. AFFIX THE INCLUDED BOLTS TO THE END OF EACH LARGE NUT AND TIGHTEN, SECURING THE TOP AND BOTTOM HALVES OF THE MOUNT

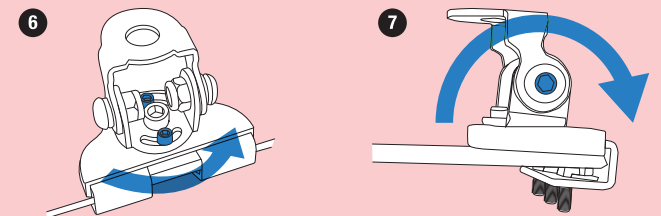


## 2. INSTALLATION

4. FIND A SECURE, METAL EDGE BETWEEN 0.08"-0.20" (3-6MM) THICK.
5. TIGHTEN LOWER ALLEN HEAD SET SCREWS UP TO SURFACE TO SECURE THE CLAMP



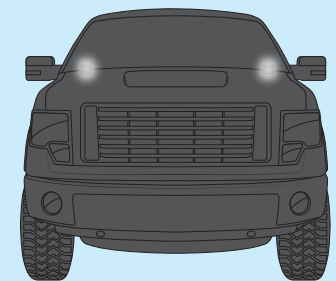
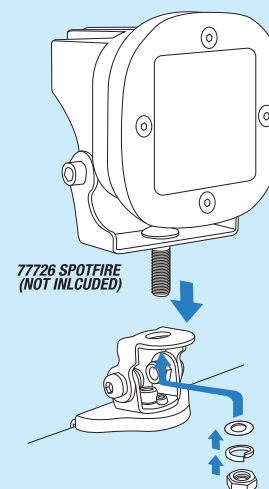
6. USING A HEX KEY ADJUST THE TWO SMALL BOLTS FOR SIDE TO SIDE ROTATION TO AN OPTIMAL POSITION
7. USING A HEX KEY ADJUST THE LARGE BOLT FOR UP AND DOWN MOVEMENT TO AN OPTIMAL POSITION



**NOTE: TIGHTEN ALL MOUNTING HARDWARE BEFORE DRIVING THE VEHICLE AND CHECK TIGHTNESS AFTER 50 MILES OR 3 DAYS OF DRIVING**

## 3. MOUNTING

8. MOUNTING LIGHT TO MOUNTING BRACKETS AND ADJUSTED TILT AND ROTATION IF NEEDED BY REVISITING STEP 3 & 4.

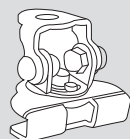


## GET STARTED

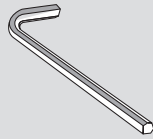
**⚠ WARNING**



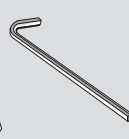
BE SURE TO USE SAFETY GLASSES AT ALL TIMES WHEN INSTALLING THIS PRODUCT.



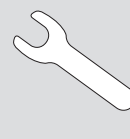
1X



1X



1X



1X

PACKAGE CONTENTS