



# 12V PowerBlock™

PART #: 77720

**⚠ WARNING: THE FAILURE TO FOLLOW THESE INSTRUCTIONS WHEN INSTALLING THE 12V POWERBLOCK MAY CAUSE ELECTRIC PROBLEMS IN YOUR VEHICLE WHICH COULD CAUSE VEHICLE DAMAGE, ELECTRICAL SYSTEM DAMAGE, FIRE, ELECTRICAL SHOCK, PERSONAL INJURY OR DEATH.**

**⚠ WARNING: THE INTENDED USE OF THE 12V POWERBLOCK IS TO PROVIDE POWER TO 12V DC AUTOMOTIVE ACCESSORIES. THIS PRODUCT IS NOT DOT APPROVED.**

YOU MUST CONSULT YOUR VEHICLE OWNER'S MANUAL TO DETERMINE THE LOCATION OF AIRBAG SENSORS BEFORE INSTALLATION. THE MANUFACTURER OR THE RETAILER IS NOT RESPONSIBLE FOR INFLATION OF AIRBAGS OR DAMAGE TO AIRBAG SENSORS DUE TO THE INSTALLATION OF THIS PRODUCT.

### INSTALLATION GUIDELINE

**⚠ WARNING: SAFETY GLASSES MUST BE USED WHEN INSTALLING THIS PRODUCT.**

12V PowerBlock is a fused power distribution unit designed to provide 12V DC power to automotive accessories. 12V PowerBlock has a distinct amperage limit per power channel below in the installation instructions. If you are not confident in your ability to install the 12V PowerBlock please consult a licensed mechanic.

12V PowerBlock has specific voltage and amperage ratings for power input and amperage draw. ENSURE THESE RATINGS ARE FOLLOWED. 12V PowerBlock must be installed in a properly functioning vehicle electrical system. Do not install this product in a malfunctioning vehicle electrical system.

Select a mounting location that will not obstruct the operation of any vehicle functions

Clean mounting surfaces before installing units using water or a 50/50 mix of water and rubbing alcohol.

Before permanently mounting to vehicle, test fit to ensure wiring is long enough to be safely installed and does not obstruct any operating functions of the vehicle.

**⚠ WARNING: DURING OPERATION LIGHTING UNITS CAN GET HOT - DO NOT TOUCH WHILE OPERATIONAL OR WITHIN 30 MINUTES OF POWERING DOWN.**

Before disconnecting battery terminals, please check your owner's manual for proper procedure.

### ALPENA® LIMITED WARRANTY

This Limited Warranty covers defects in materials or workmanship of this product for one (1) year from the date of purchase. Normal wear and tear over time are not product defects. Product problems caused by not following the product instructions, abuse, misuse, alteration, accident and/or use beyond the product's intended purpose are not covered. This warranty is valid for the original owner and is not transferable. Proof of purchase is required.

Any implied warranties and conditions, such as merchantability and fitness for a particular purpose are hereby excluded, or if not excludable under law, are limited to one (1) year period. Some jurisdictions do not allow limitations on how long an implied warranty lasts, so this limitation may not apply to you

NO INCIDENTAL, CONSEQUENTIAL OR SPECIAL DAMAGES ARE RECOVERABLE. SOME JURISDICTIONS DO NOT ALLOW THE EXCLUSION OF INCIDENTAL, CONSEQUENTIAL OR SPECIAL DAMAGES, SO THE ABOVE LIMITATION OR EXCLUSION MAY NOT APPLY TO YOU. THIS WARRANTY GIVES YOU SPECIFIC LEGAL RIGHTS AND YOU MAY HAVE OTHER RIGHTS WHICH VARY DEPENDING ON THE JURISDICTION.

We will replace any product we determine to be defective provided you follow our product return directions. Please note that replacement product may not be exact due to style changes to our products. We will cover the mailing expense to send you a replacement product. However, mailing costs to return to us the original product which is claimed to be defective must be paid by you. If a replacement product is not available at the time you submit your warranty request, we will issue a credit.

For warranty service, please see below.

Problems? We can solve them!  
1-800-387-3217  
feedback@alpena.ca  
www.alpena.ca



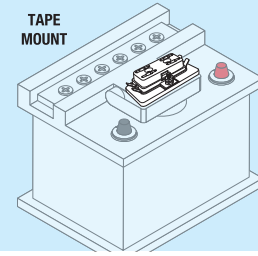
AlpenaAutomotive

## 1. MOUNTING

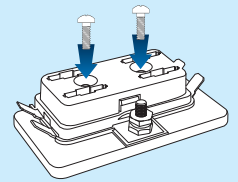
MOUNT CLOSE TO THE BATTERY AND AWAY FROM EXPOSURE TO MOISTURE OR EXTREME HEAT

BEFORE PERMANENTLY MOUNTING TO VEHICLE, TEST FIT TO ENSURE WIRING IS LONG ENOUGH TO BE SAFELY INSTALLED AND DOES NOT OBSTRUCT ANY OPERATING FUNCTIONS OF THE VEHICLE. CHOOSE BETWEEN TAPE MOUNTING OR SCREW MOUNTING.

TAPE MOUNT



SCREW MOUNT



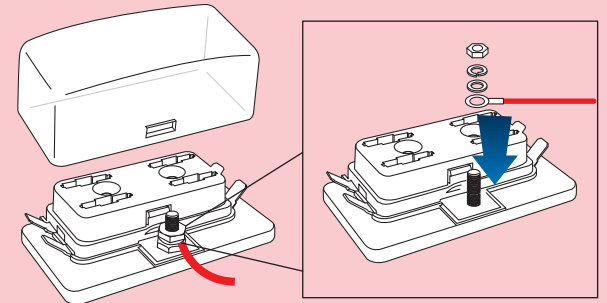
## 2. WIRING

CONNECT THE RED WIRE TO THE POSITIVE TERMINAL OF YOUR VEHICLE'S BATTERY. CONNECT THE BLACK WIRE TO THE GROUND BOLT ON THE UNIT AND THEN TO A SAFE CHASSIS GROUND

**NOTE: 12V POWERBLOCK SUPPORTS A MAX TOTAL OF 40A @ 12V DC / 20A @ 24V DC.**

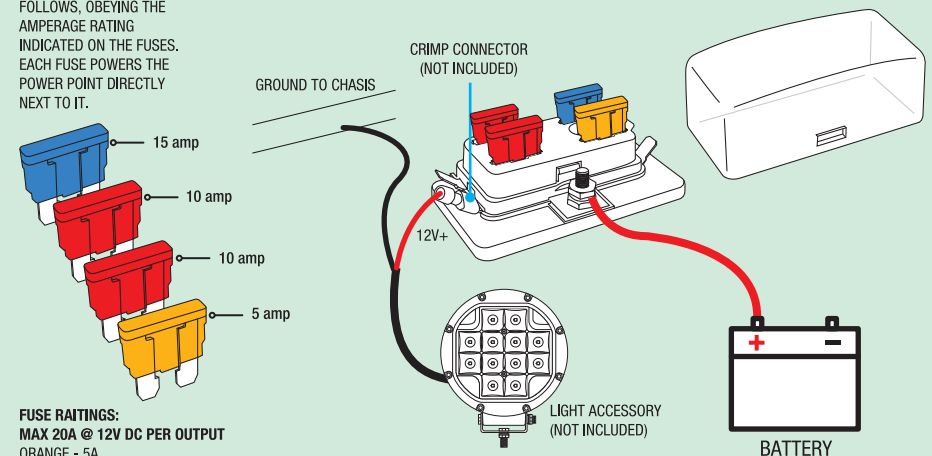
**⚠ WARNING: ENSURE WIRE LENGTH AND DIAMETER ARE CORRECT FOR THE CURRENT DRAW WHEN POWERING THE FUSE BLOCK AND EACH OUTPUT.**

**⚠ WARNING: IF YOU ARE NOT CONFIDENT IN YOUR ABILITY TO INSTALL THE 12V POWERBLOCK PLEASE CONSULT A LICENSED MECHANIC.**



## 3. CONNECTING ACCESSORIES

CONNECT ACCESSORIES AS FOLLOWS, OBEYING THE AMPERAGE RATING INDICATED ON THE FUSES. EACH FUSE POWERS THE POWER POINT DIRECTLY NEXT TO IT.



**FUSE RATINGS:**  
MAX 20A @ 12V DC PER OUTPUT  
ORANGE - 5A  
RED - 10 A  
BLUE - 15A



AlpenaAutomotive

Problems? We can solve them!  
1-800-387-3217 - feedback@alpena.ca