

ALPENA LED Ambient Light Kit DASHLITZ PART #: 77701

WARNING: THE FAILURE TO FOLLOW THESE INSTRUCTIONS WHEN INSTALLING THE LED AMBIENT LIGHTS MAY CAUSE ELECTRIC PROBLEMS IN YOUR VEHICLE WHICH COULD CAUSE VEHICLE DAMAGE, ELECTRICAL SYSTEM DAMAGE, FIRE, ELECTRICAL SHOCK, PERSONAL INJURY OR DEATH.

WARNING: DO NOT LOOK DIRECTLY INTO THE LED AMBIENT LIGHTS. THE INTENDED USE OF THE LED AMBIENT LIGHTS IS TO PROVIDE INTERIOR AUXILIARY LIGHTING. THIS PRODUCT IS NOT DOT APPROVED.

YOU MUST CONSULT YOUR VEHICLE OWNER'S MANUAL TO DETERMINE THE LOCATION OF AIRBAG SENSORS BEFORE INSTALLATION. THE MANUFACTURER OR THE RETAILER IS NOT RESPONSIBLE FOR INFLATION OF AIRBAGS OR DAMAGE TO AIRBAG SENSORS DUE TO THE INSTALLATION OF THIS PRODUCT.

INSTALLATION GUIDELINE

WARNING: SAFETY GLASSES MUST BE USED WHEN INSTALLING THIS PRODUCT.

LED Ambient Lights is an auxiliary light designed to provide interior auxiliary and accent lighting while driving off road. LED Ambient Lights has a distinct amperage draw below in the installation instructions. If you are not confident in your ability to install the LED Ambient Lights please consult a licensed mechanic.

LED Ambient Lights has specific voltage and amperage ratings for power input and amperage draw. ENSURE THESE RATINGS ARE FOLLOWED. The LED Ambient Lights must be installed in a properly functioning vehicle electrical system. Do not install this product in a malfunctioning vehicle electrical system.

Select a mounting location that will not obstruct the operation of instruments.

Clean mounting surfaces with isopropyl alcohol (70%) and wait for the surface to dry before proceeding.

Before permanently mounting to vehicle, test fit to ensure wiring is long enough to be safely installed and does not obstruct any operating functions of the vehicle. These lights should not be installed where their operation hinders the visibility of the driver or other drivers

WARNING: DURING OPERATION LIGHTING UNITS CAN GET HOT - DO NOT TOUCH WHILE OPERATIONAL OR WITHIN 30 MINUTES OF POWERING DOWN.

Before disconnecting battery terminals, please check your owner's manual for proper procedure.

WARNING: Cancer and Reproductive Harm - www.P65Warnings.ca.gov

ALPENA® LIMITED WARRANTY

This Limited Warranty covers defects in materials or workmanship of this product for one (1) year from the date of purchase. Normal wear and tear over time are not product defects. Product problems caused by not following the product instructions, abuse, misuse, alteration, accident and/or use beyond the product's intended purpose are not covered. This warranty is valid for the original owner and is not transferable. Proof of purchase is required.

Any implied warranties and conditions, such as merchantability and fitness for a particular purpose are hereby excluded, or if not excludable under law, are limited to one (1) year period. Some jurisdictions do not allow limitations on how long an implied warranty lasts, so this limitation may not apply to you

NO INCIDENTAL, CONSEQUENTIAL OR SPECIAL DAMAGES ARE RECOVERABLE. SOME JURISDICTIONS DO NOT ALLOW THE EXCLUSION OF INCIDENTAL, CONSEQUENTIAL OR SPECIAL DAMAGES, SO THE ABOVE LIMITATION OR EXCLUSION MAY NOT APPLY TO YOU. THIS WARRANTY GIVES YOU SPECIFIC LEGAL RIGHTS AND YOU MAY HAVE OTHER RIGHTS WHICH VARY DEPENDING ON THE JURISDICTION.

We will replace any product we determine to be defective provided you follow our product return directions. Please note that replacement product may not be exact due to style changes to our products. We will cover the mailing expense to send you a replacement product. However, mailing costs to return to us the original product which is claimed to be defective must be paid by you. If a replacement product is not available at the time you submit your warranty request, we will issue a credit.

For warranty service, please see below.

Marklyn Group Inc. 753011 2nd Line EHS Mono, ON, Canada L9W 5W4
Alpena® is a registered trademark of Marklyn Group Inc. © Copyright 2023
Made in China

NORTH AMERICAN
SUPPORT AVAILABLE



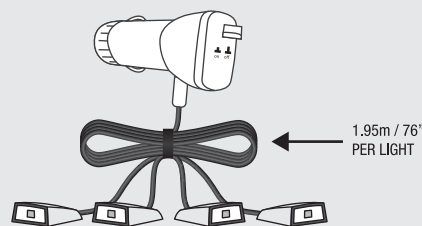
@AlpenaAutomotive
1-800-387-3217

GET STARTED

WARNING



BE SURE TO USE SAFETY GLASSES AT ALL TIMES WHEN INSTALLING THIS PRODUCT.



PACKAGE CONTENTS

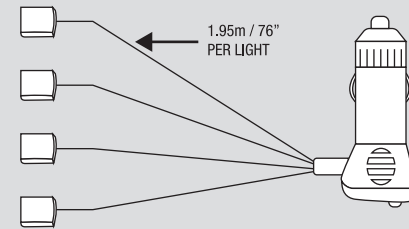
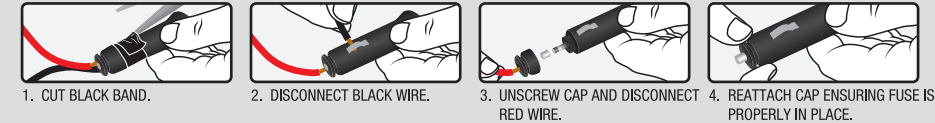
1. ASSEMBLY

CAREFULLY REMOVE DASHLITZ AND INCLUDED HARDWARE FROM PACKAGING, MAKING SURE TO UNTANGLE ALL WIRES

REMOVE TRY ME (FIGURE 1)

DISPOSE OF THE BATTERY IN AN ENVIRONMENTALLY RESPONSIBLE MANNER AS RECOMMENDED BY YOUR LOCAL WASTE MANAGEMENT AUTHORITY.

FIGURE 1 - TRY ME REMOVAL

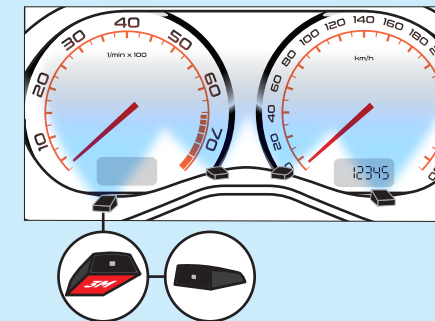


2. MOUNTING

SELECT MOUNTING LOCATION

CLEAN MOUNTING SURFACES BEFORE INSTALLING UNITS USING WATER, AND IF NECESSARY, A 50/50 MIX OF WATER AND RUBBING ALCOHOL.

REMOVE 3M™ BACKING AND PLACE PODS IN DESIRED LOCATION. PRESS DOWN ON THE POD TO ENSURE IT HAS ADHERED TO THE DESIRED LOCATION

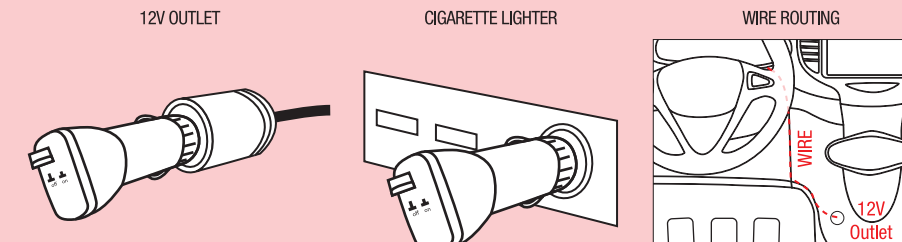


3. WIRING

MAX. POWER REQUIREMENTS 0.07A @ 12V DC

AFTER MOUNTING, PLUG INTO ANY 12V DC OUTLET OR CIGARETTE LIGHTER SOCKET FOR POWER. DO NOT POSITION WIRES SO THAT THEY WILL INTERFERE WITH ANY VEHICLE FUNCTIONS.

SECURE THE WIRES ALONG YOUR DASHBOARD. TIP: FOR A CLEAN INSTALLATION, TUCK THE WIRE IN EXISTING DASH PANEL SEAMS



NOTE: 2A 6X30MM FUSE USED FOR THE CIGARETTE PLUG

4. AIMING & OPERATION

PRESS THE ON/OFF BUTTON TO OPERATE LIGHTS



TRY ME - WIRE TAG

WARNING: This battery is not to be used with the product. It is used to demonstrate the LED display for the product packaging only.

After opening the packaging, dispose of the battery in an environmentally responsible manner as recommended by your local waste management authority.

- DO NOT DISPOSE OF BATTERY IN OR NEAR A FIRE.
- DO NOT ATTEMPT TO CHARGE, REPOWER OR DISMANTLE THE BATTERY.
- KEEP BATTERY OUT OF THE REACH OF CHILDREN.

The battery may explode or leak or cause burn or other injury if improperly used or handled.

WARNING: This battery is not to be used with the product. It is used to demonstrate the LED display for the product packaging only.

After opening the packaging, dispose of the battery in an environmentally responsible manner as recommended by your local waste management authority.

- DO NOT DISPOSE OF BATTERY IN OR NEAR A FIRE.
- DO NOT ATTEMPT TO CHARGE, REPOWER OR DISMANTLE THE BATTERY.
- KEEP BATTERY OUT OF THE REACH OF CHILDREN.

The battery may explode or leak or cause burn or other injury if improperly used or handled.