



# TREKTEC 22

PART #: 77629

**WARNING:** FAILURE TO FOLLOW THESE INSTRUCTIONS WHEN INSTALLING THE TREKTEC 22 MAY CAUSE ELECTRIC PROBLEMS IN YOUR VEHICLE WHICH COULD CAUSE VEHICLE DAMAGE, ELECTRICAL SYSTEM DAMAGE, FIRE, ELECTRICAL SHOCK, PERSONAL INJURY OR DEATH.

**WARNING:** DO NOT LOOK DIRECTLY INTO THE TREKTEC 22 BECAUSE ITS BRIGHT LIGHT COULD DAMAGE YOUR EYES. DO NOT DRIVE OR POSITION YOUR VEHICLE NEAR ONCOMING TRAFFIC WHEN THE TREKTEC 22 IS POWERED ON – DOING SO MAY RESULT IN VISION IMPAIRMENT FOR ANOTHER DRIVER AND OR VEHICULAR COLLISION. THE INTENDED USE OF THE TREKTEC 22 IS TO PROVIDE EXTERIOR AUXILIARY LIGHTING FOR OFF ROAD USE ONLY. THIS PRODUCT IS NOT DOT APPROVED.

**WARNING:** A VERY SMALL PERCENTAGE OF SOME INDIVIDUALS MAY EXPERIENCE EPILEPTIC SEIZURES OR BLACKOUTS WHEN EXPOSED TO CERTAIN LIGHT PATTERNS OR FLASHING LIGHTS. THESE CONDITIONS MAY TRIGGER PREVIOUSLY UNDETECTED EPILEPTIC SYMPTOMS OR SEIZURES IN PERSONS WHO HAVE NO HISTORY OF PRIOR SEIZURES OR EPILEPSY. THESE CONDITIONS, IF YOU HAVE AN EPILEPTIC CONDITION OR HAVE HAD SEIZURES OF ANY KIND, IMMEDIATELY DISCONTINUE USE AND CONSULT YOUR PHYSICIAN BEFORE RESUMING OPERATION OF THE LIGHTED ACCESSORY.

### INSTALLATION GUIDELINE

**WARNING: SAFETY GLASSES MUST BE USED WHEN INSTALLING THIS PRODUCT.**

TREKTEC 22 is an auxiliary light designed to provide exterior auxiliary and accent lighting while driving off road. TREKTEC 22 has a distinct amperage draw below in the installation instructions. If you are not confident in your ability to install the Alpina® TREKTEC 22 please consult a licensed mechanic.

TREKTEC 22 has specific voltage and amperage ratings for power input and amperage draw. ENSURE THESE RATINGS ARE FOLLOWED. The TREKTEC 22 must be installed in a properly functioning vehicle electrical system. Do not install this product in a malfunctioning vehicle electrical system.

Select a mounting location that will not obstruct the operation of headlights or turn signals.

Clean mounting surfaces with isopropyl alcohol (70%) and wait for the surface to dry before proceeding.

Before permanently mounting to vehicle, test fit to ensure optimal beam pattern, height, and width and that wiring is long enough to be safely installed and does not obstruct any operating functions of the vehicle. These lights must not be installed where their operation hinders the visibility of the driver or other drivers.

**WARNING: DURING OPERATION LIGHTING UNITS CAN GET HOT - DO NOT TOUCH WHILE OPERATIONAL OR WITHIN 30 MINUTES OF POWERING DOWN.**

You must consult your vehicle owner's manual to determine the location of airbag sensors before installation. The manufacturer or the retailer is not responsible for inflation of airbags or damage to airbag sensors due to the installation of this product.

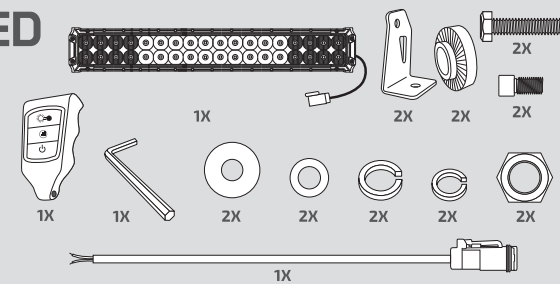
Before disconnecting battery terminals, please check your owner's manual for proper procedure.

### LIMITED WARRANTY

The manufacturer warrants this product when it is properly installed, connected, and operated, for a period of one (1) year from the date of purchase by the original purchaser. The warranty is void and neither the manufacturer nor the retailer is responsible for any product failure, damage, or injury if these instructions are not strictly followed.

## GET STARTED

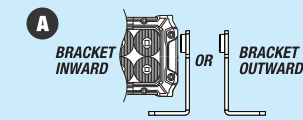
### WARNING



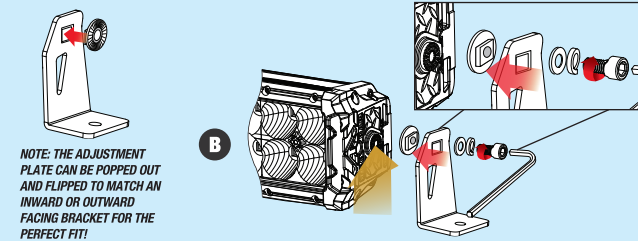
PACKAGE CONTENTS

## 1. ASSEMBLY

ATTACH MOUNTING BRACKETS AS SHOWN:



A) ALIGN THE HOLE IN THE BODY OF THE BAR WITH THE HOLE IN THE MOUNTING BRACKET - THE 'FOOT' OF THE BRACKET CAN FACE EITHER TOWARDS OR AWAY FROM THE CENTER OF THE BAR OPENING DEPENDENT UPON MOUNTING SURFACE PREFERENCE.



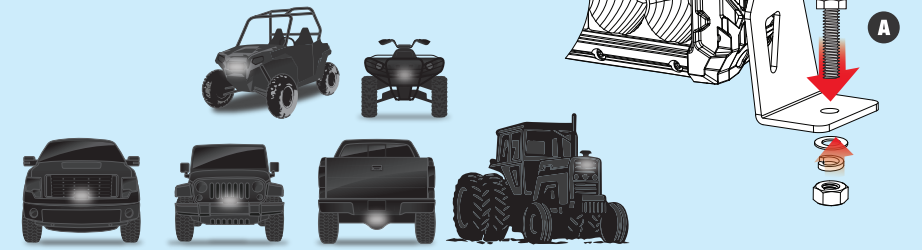
B) USING THE SHORT SCREW, FLAT WASHER, AND LOCK WASHER TO ATTACH THE BRACKET TO THE BODY OF THE BAR - LEAVE SLIGHTLY LOOSE UNTIL THE LIGHT IS PROPERLY AIMED THEN TIGHTEN. ATTACH THE REMAINING BRACKET TO THE OTHER SIDE.

NOTE: THE ADJUSTMENT PLATE CAN BE POPPED OUT AND FLIPPED TO MATCH AN INWARD OR OUTWARD FACING BRACKET FOR THE PERFECT FIT

## 2. MOUNTING

MOUNT THE BAR TO THE DESIRED MOUNTING LOCATION. CLEAN THE SURFACE OF ALL CONTAMINANTS BEFORE BOLTING ON THE BRACKETS.

A) THREAD THE LONG BOLT THROUGH THE HOLE IN THE BRACKET FEET AND THROUGH THE MOUNTING SURFACE USING THE FLAT WASHER AND LOCKING WASHER TO SECURE THE BRACKET TO THE BAR.



## 3. WIRING

POWER REQUIREMENTS	7A @ 12V DC	3.5A @ 24V DC
--------------------	-------------	---------------

### OPTION 1 - RELAY WIRING

A) BATTERY / RELAY SWITCH CONNECTION FOR OPTIMAL PERFORMANCE SEE FIGURE 1 OPTIONAL RELAY WIRING DIAGRAM #77631

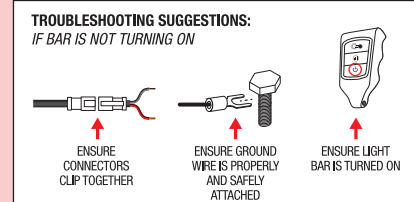
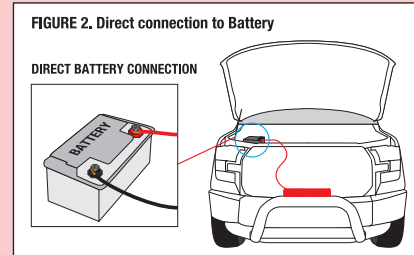
### OPTION 2 - DIRECT CONNECTION TO BATTERY

A) ATTACH POSITIVE (RED) WIRE SECURELY TO A 12-24V FUSED POWER SOURCE. EXTENSION OF THE WIRING MAY BE NECESSARY DEPENDING ON LOCATION OF THE UNIT RELATIVE TO THE POWER SOURCE.  
B) ATTACH BLACK GROUND WIRE TO A SAFE, CLEAN GROUND LOCATION. EXAMPLE OF CLEAN GROUND LOCATION: CHASSIS BOLT OR FRAME BOLT

### OPTION 3 - 12V ACCESSORY WIRE

CONSULT A MECHANIC FOR INSTALLING USING A 12V ACCESSORY WIRE

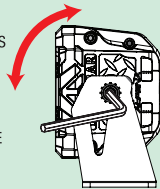
ENSURE POWER SOURCE IS CAPABLE – SEE POWER RATINGS AND RESTRICTIONS. COMPATIBLE WITH SWITCHES THAT WILL SUPPORT POWER REQUIREMENTS OF 7A @ 12V DC / 3.5A @ 24V DC



## 4. AIMING & OPERATION

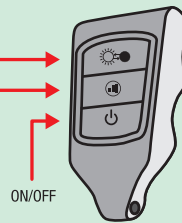
A) ADJUST THE ANGLE OF THE LED BAR SO THAT THE LIGHT OUTPUT IS EVEN AND STRAIGHT. THE BAR ADJUSTS IN 10 DEGREE INCREMENTS

B) TIGHTEN THE BOLTS ON EACH SIDE TO LOCK IN THE AIMING ANGLE.



STROBE MODE: PRESS TO CHANGE PATTERN / PRESS HOLD 3 SEC TO STOP FLASH

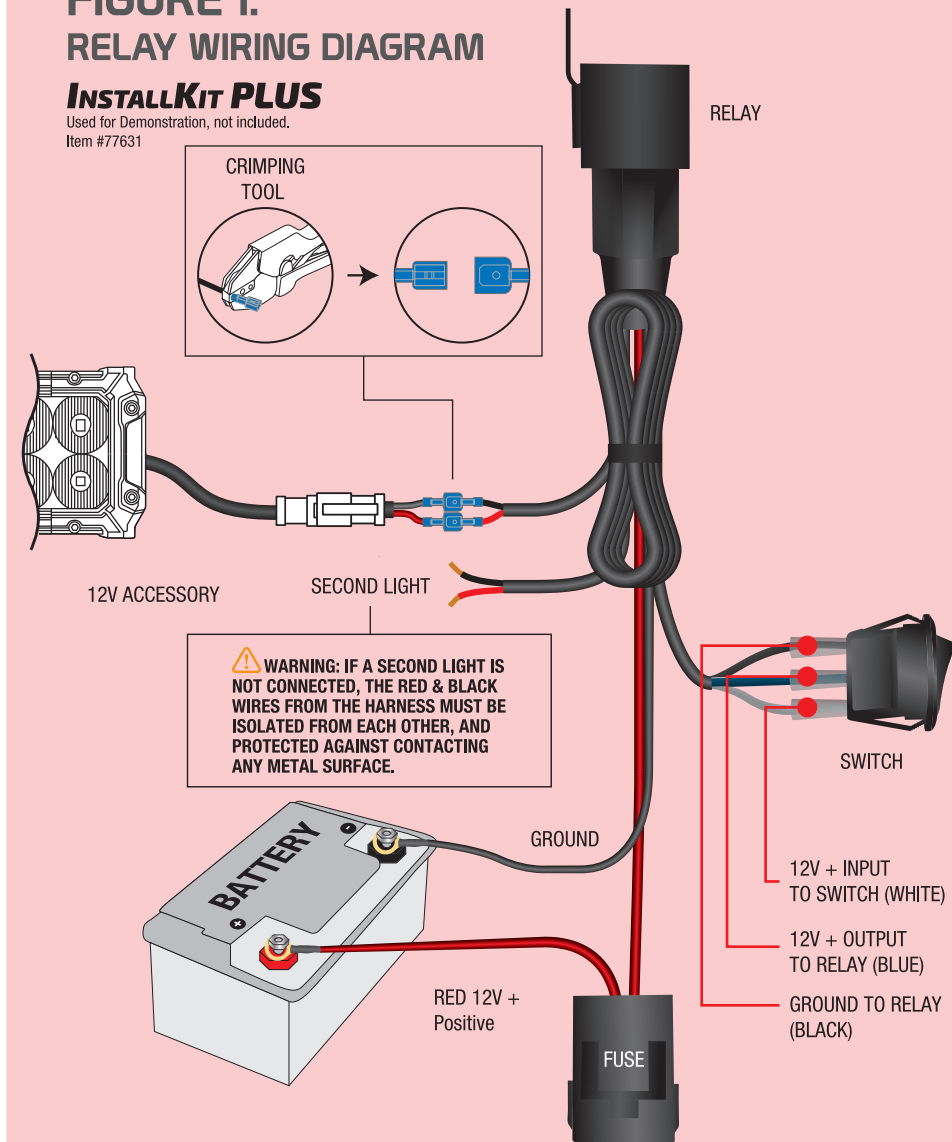
BRIGHTNESS: PRESS 1/2 FOR DESIRED INTENSITY, PRESS AND HOLD FOR 3 SEC FOR 100% BRIGHTNESS



## FIGURE 1. RELAY WIRING DIAGRAM

### INSTALLKIT PLUS

Used for Demonstration, not included. Item #77631



### Federal Communications Commission (FCC) Interference Statement

This equipment has been tested and found to comply with the limits for a Class B digital device, pursuant to Part 15 of the FCC Rules.

These limits are designed to provide reasonable protection against harmful interference in a residential installation. This equipment generates, uses and can radiate radio frequency energy and, if not installed and used in accordance with the instructions, may cause harmful interference to radio communications.

There is no guarantee that interference will not occur in a particular installation. If this equipment does cause harmful interference to radio or television reception, which can be determined by turning the equipment off and on, the user is encouraged to try to correct the interference by one of the following measures:

- Reorient or relocate the receiving antenna.
- Increase the separation between the equipment and receiver.
- Connect the equipment into an outlet on a circuit different from that to which the receiver is connected.
- Consult the dealer or an experienced radio/TV technician for help.

This device complies with Part 15 of the FCC Rules. Operation is subject to the following two conditions:

- (1) This device may not cause harmful interference, and (2) this device must accept any interference received, including interference that may cause undesired operation.

FCC Caution: Any changes or modifications not expressly approved by the party responsible for compliance could void the user's authority to operate this equipment.

### RF exposure warning

This equipment complies with FCC radiation exposure limits set forth for an uncontrolled environment. The equipment must not be co-located or operating in conjunction with any other antenna or transmitter.

### ALPENA® LIMITED WARRANTY

This Limited Warranty covers defects in materials or workmanship of this product for one (1) year from the date of purchase. Normal wear and tear over time are not product defects. Product problems caused by not following the product instructions, abuse, misuse, alteration, accident and/or use beyond the product's intended purpose are not covered. This warranty is valid for the original owner and is not transferable. Proof of purchase is required.

Any implied warranties and conditions, such as merchantability and fitness for a particular purpose are hereby excluded, or if not excludable under law, are limited to one (1) year period. Some jurisdictions do not allow limitations on how long an implied warranty lasts, so this limitation may not apply to you

NO INCIDENTAL, CONSEQUENTIAL OR SPECIAL DAMAGES ARE RECOVERABLE. SOME JURISDICTIONS DO NOT ALLOW THE EXCLUSION OF INCIDENTAL, CONSEQUENTIAL OR SPECIAL DAMAGES, SO THE ABOVE LIMITATION OR EXCLUSION MAY NOT APPLY TO YOU. THIS WARRANTY GIVES YOU SPECIFIC LEGAL RIGHTS AND YOU MAY HAVE OTHER RIGHTS WHICH VARY DEPENDING ON THE JURISDICTION.

We will replace any product we determine to be defective provided you follow our product return directions. Please note that replacement product may not be exact due to style changes to our products. We will cover the mailing expense to send you a replacement product. However, mailing costs to return to us the original product which is claimed to be defective must be paid by you. If a replacement product is not available at the time you submit your warranty request, we will issue a credit.

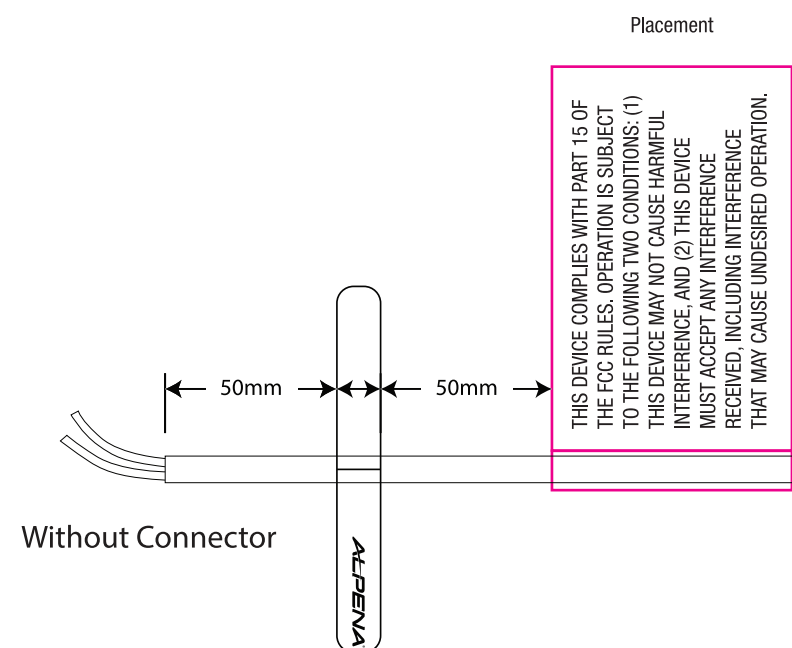
For warranty service, please see below.

**WE CAN HELP**  
Installation support available



@AlpinaAutomotive  
#AlpinaAutomotive  
1-800-387-3217

DISTRIBUTED BY WEBER LOGISTICS 14909 SUMMIT DRIVE, EASTVALE, CA 92880 | P: 909.378.2011 | F: 909.378.2099 | WWW.WEBERLOGISTICS.COM



Placement

THIS DEVICE COMPLIES WITH PART 15 OF THE FCC RULES. OPERATION IS SUBJECT TO THE FOLLOWING TWO CONDITIONS: (1) THIS DEVICE MAY NOT CAUSE HARMFUL INTERFERENCE, AND (2) THIS DEVICE MUST ACCEPT ANY INTERFERENCE RECEIVED, INCLUDING INTERFERENCE THAT MAY CAUSE UNDESIRED OPERATION.

1cm 0.62cm

TerraBar Warning Label for Wire



WIRE

THIS DEVICE COMPLIES WITH PART 15 OF THE FCC RULES. OPERATION IS SUBJECT TO THE FOLLOWING TWO CONDITIONS: (1) THIS DEVICE MAY NOT CAUSE HARMFUL INTERFERENCE, AND (2) THIS DEVICE MUST ACCEPT ANY INTERFERENCE RECEIVED, INCLUDING INTERFERENCE THAT MAY CAUSE UNDESIRED OPERATION.

THIS DEVICE COMPLIES WITH PART 15 OF THE FCC RULES. OPERATION IS SUBJECT TO THE FOLLOWING TWO CONDITIONS: (1) THIS DEVICE MAY NOT CAUSE HARMFUL INTERFERENCE, AND (2) THIS DEVICE MUST ACCEPT ANY INTERFERENCE RECEIVED, INCLUDING INTERFERENCE THAT MAY CAUSE UNDESIRED OPERATION.

3.175cm

1.62cm

5.08cm

