

How to tighten the screws

1. It is always recommended to tighten the screws deep enough. The tighter the screws are, the more stable a puzzle will be (and probably more stiff while making turns).

2. Always leave a little bit of radial space along the screw so that the center cap can be lifted by around 1~2mm for single layered models.

**For those in-between models, like #65, #85, #88, #89, it is recommended to tighten further.

**For neat multiple layered models like #61, #75, #87, tighten the screws to their full depth.

3. Rules of thumb. Tension adjustment is in general dependent on personal judgement. Different tension could result in very different feel. Start with simple models and accumulate your own sense. Use different springs, screws, nuts if you think the default set can't provide your favorite handle.

4. Previous description of sticking screws out of nuts by 1-3mm is misleading in some cases and is not anymore recommended. Reason: the height of caps varies in different models.

VeryPuzzle
2021/08/06

VeryPuzzle

Rhombic Tuttminx 66

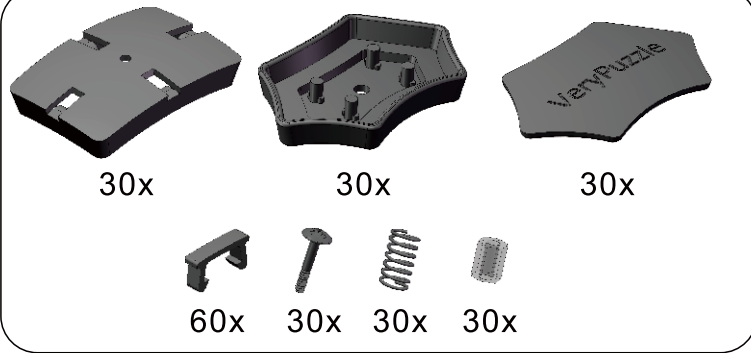
D1RT5-M5-C1

#71

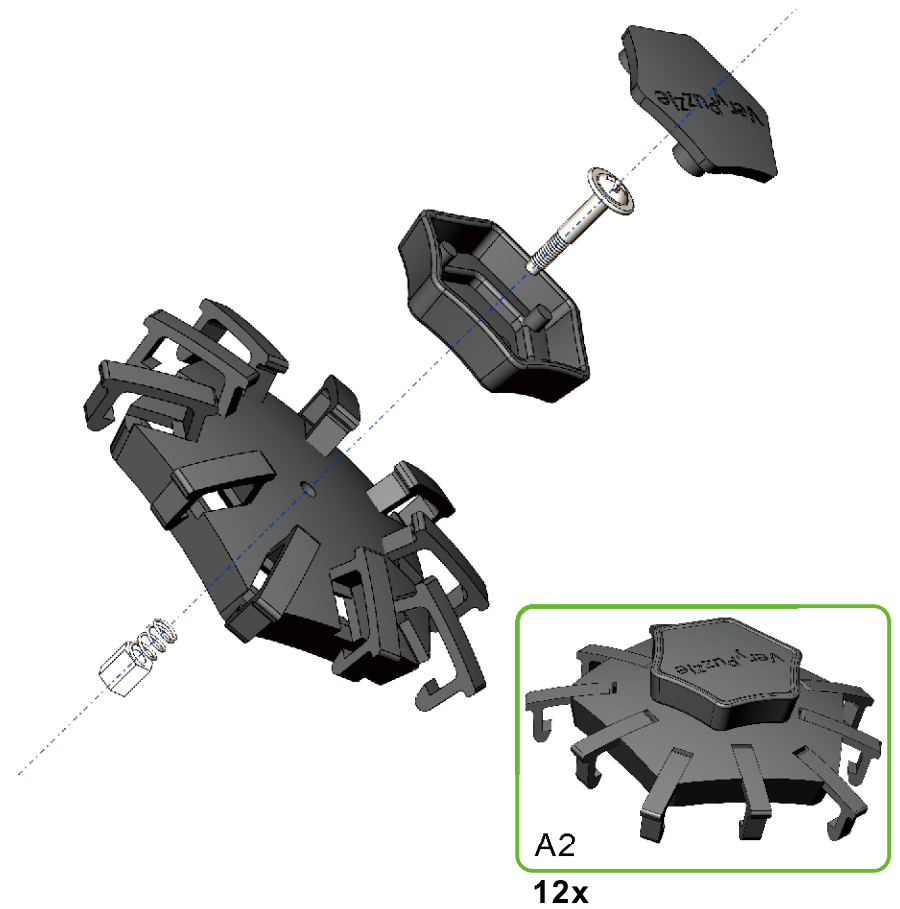
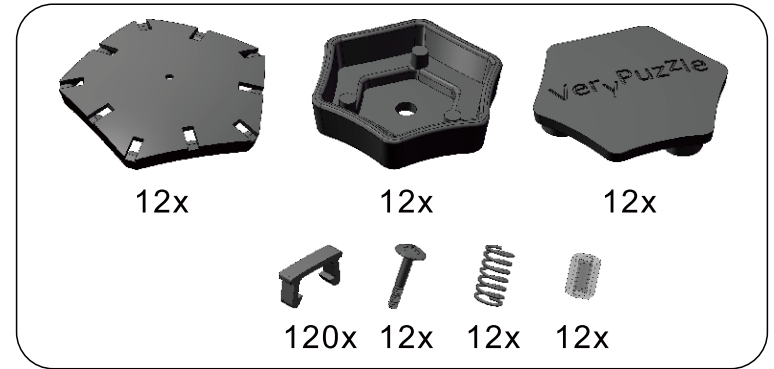
900+ parts
42 axes



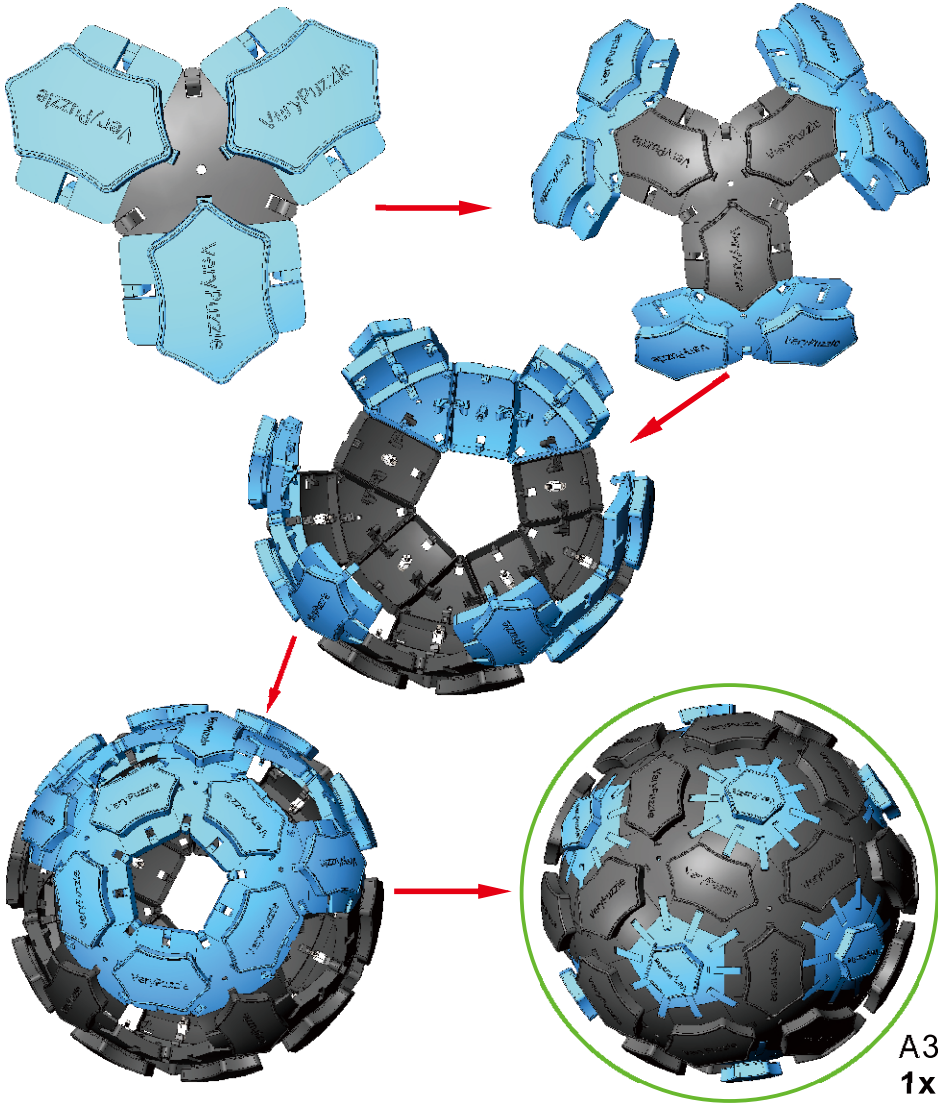
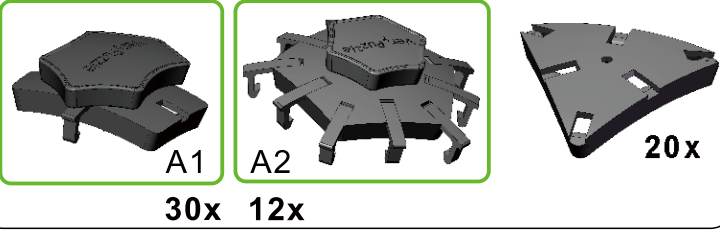
1



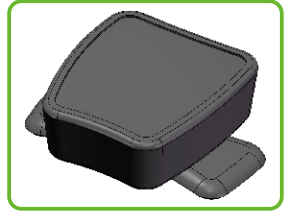
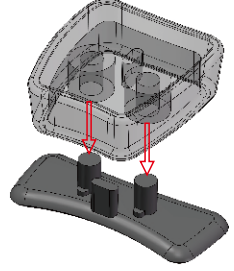
2



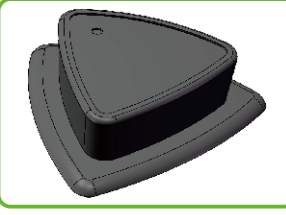
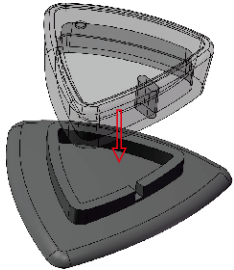
3



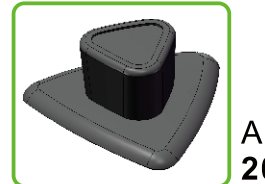
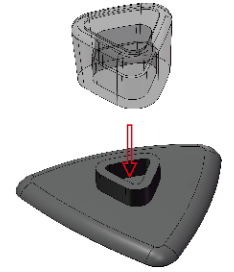
4

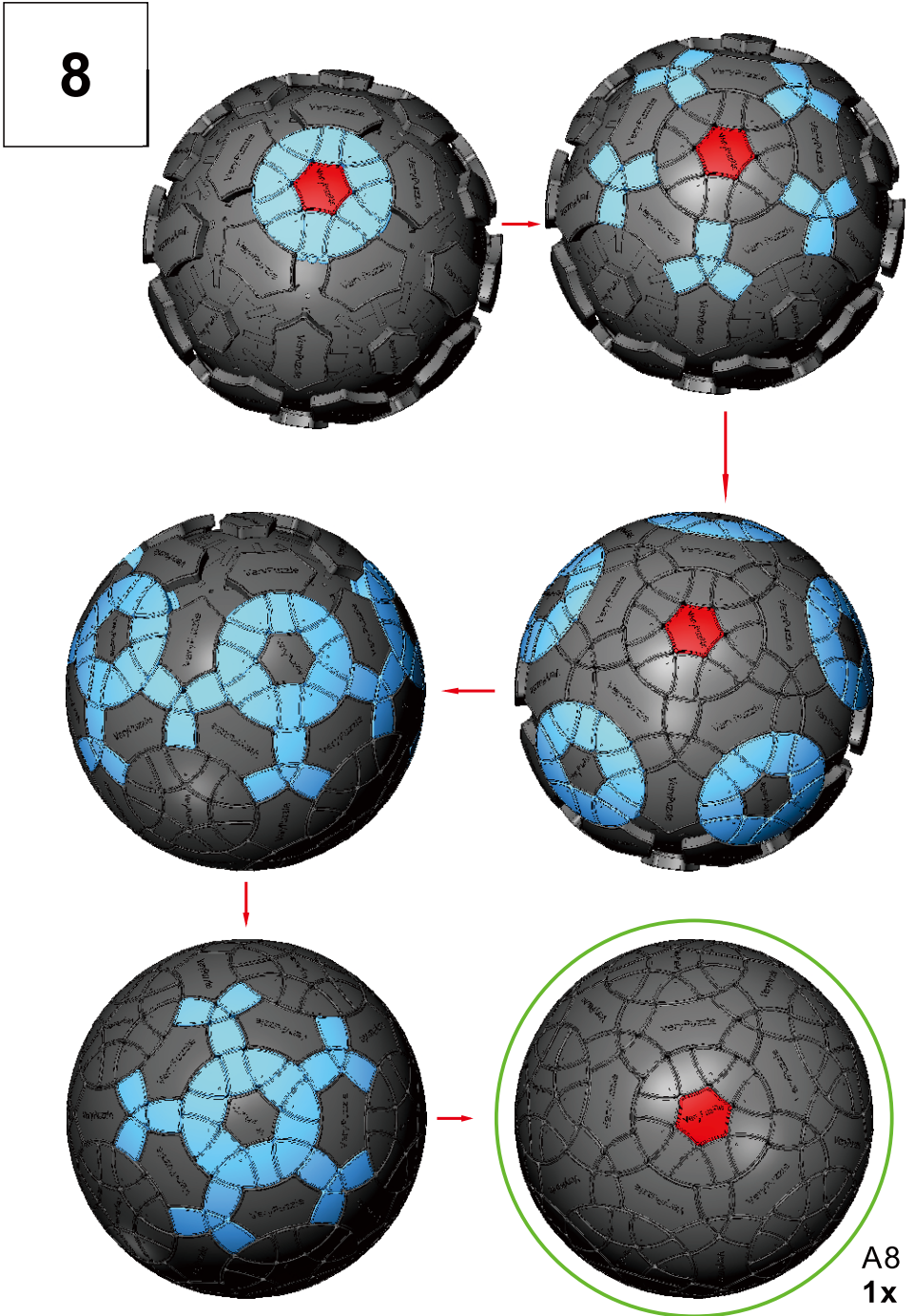
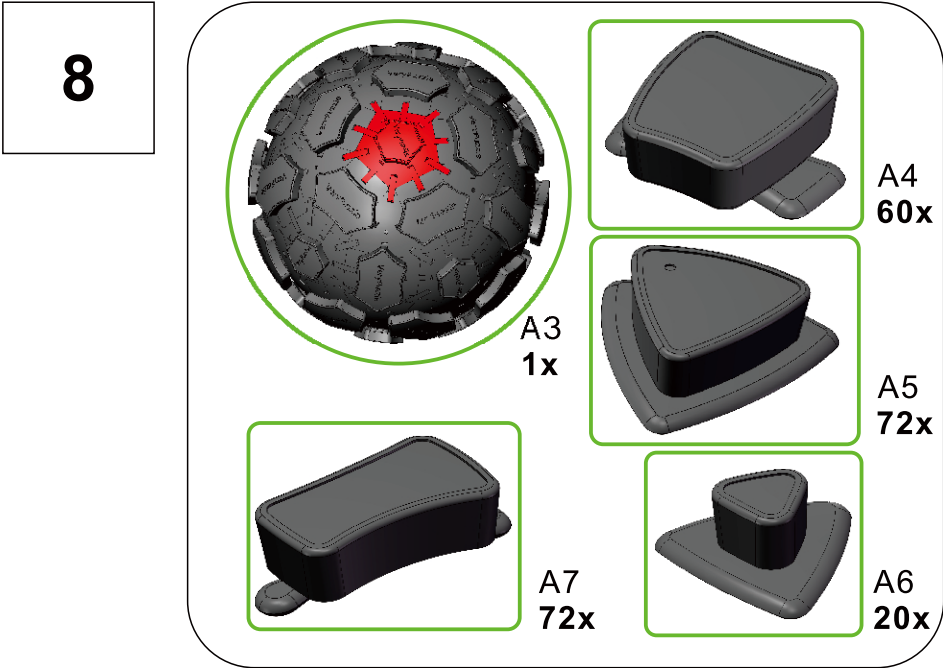
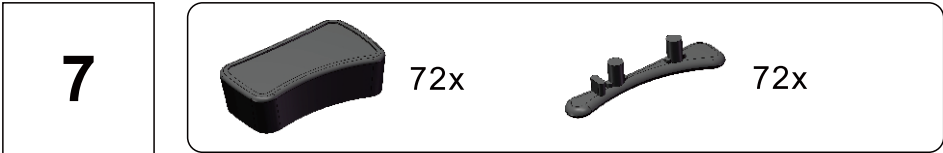


5

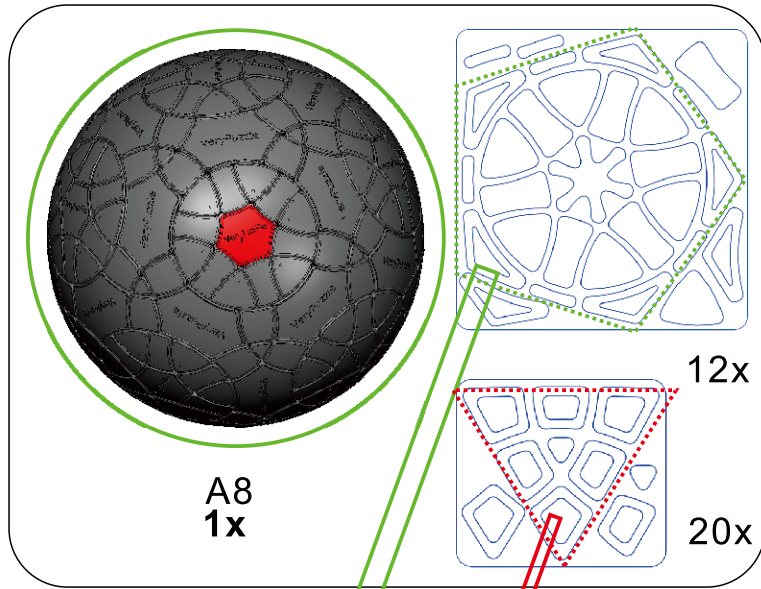


6





9



10

Rotation Rules

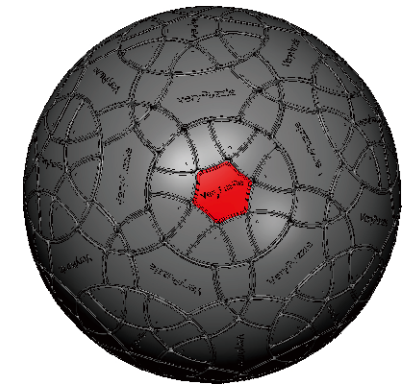
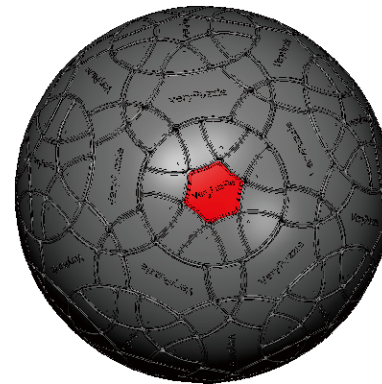


6-fold symmetry
Turns $60 \cdot n$ degrees

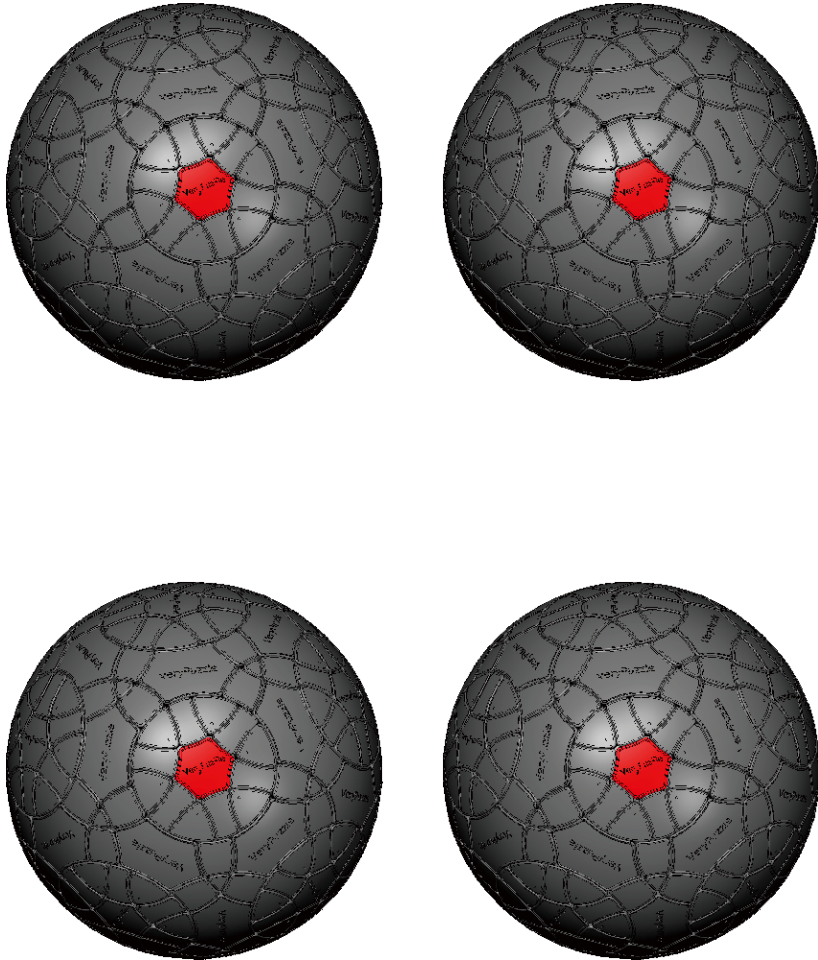


R4 symmetry
Turns $180 \cdot n$ degrees
Turns $180 \cdot n + 63.4$ degrees

Notations and Algorithms

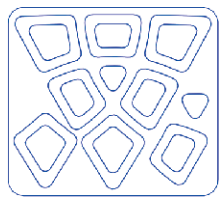
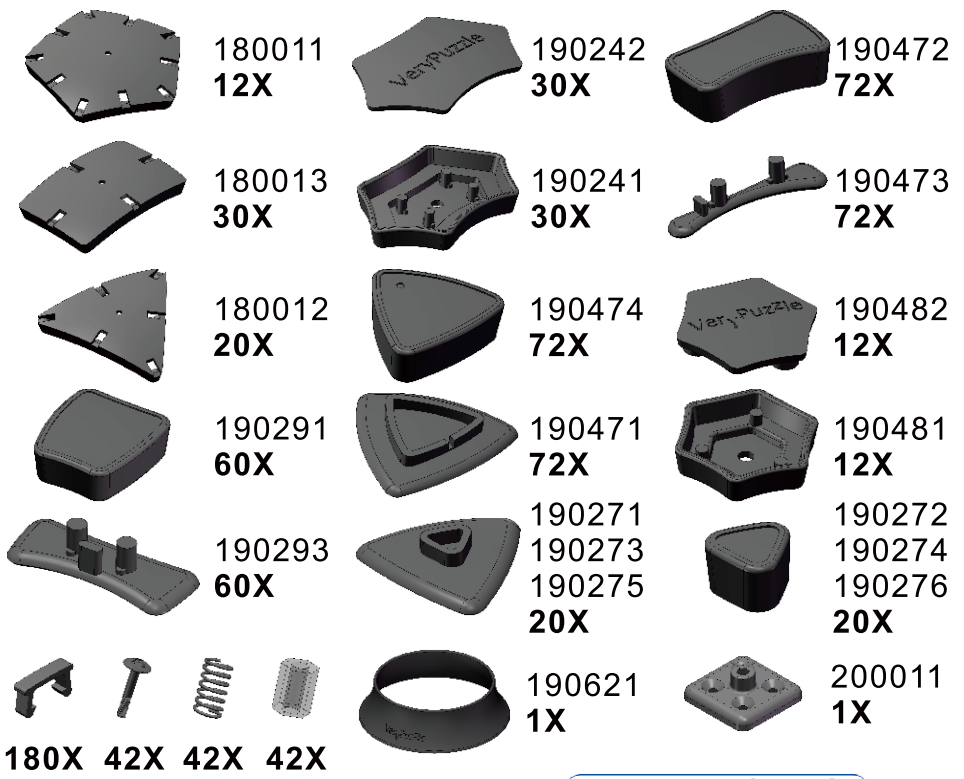


Notations and Algorithms

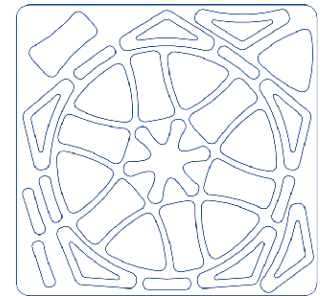


Product Information Card

Product Name	Rhombic Tuttminx 66
Model NO.	#71
Design	VeryPuzzle Co., Ltd(HK)
Manufacturer	VeryPuzzle Co., Ltd(HK)
Year of release	2019
Maximum diameter	145 mm
Visible moving parts	266 pcs
Assembly challenge	★★★★☆☆☆☆
Solving challenge	★★★★☆☆☆☆
Stickers strategy	Voronoi, simplified
Sticker material	Textured, uniform
Color scheme	32 colors
Sticker protection	Yes
Number of stickers	416 pcs
Axis & Symmetry	D(C6)+RT(R4)
In-core spring	Yes
Adjustable tension	No
Technical Name	D1RT5-M5-C1
Topological Print	D23RT24
Core specification	DIRT130



20X



12X

Customer Service

1. support@verypuzzle.com



VeryPuzzle