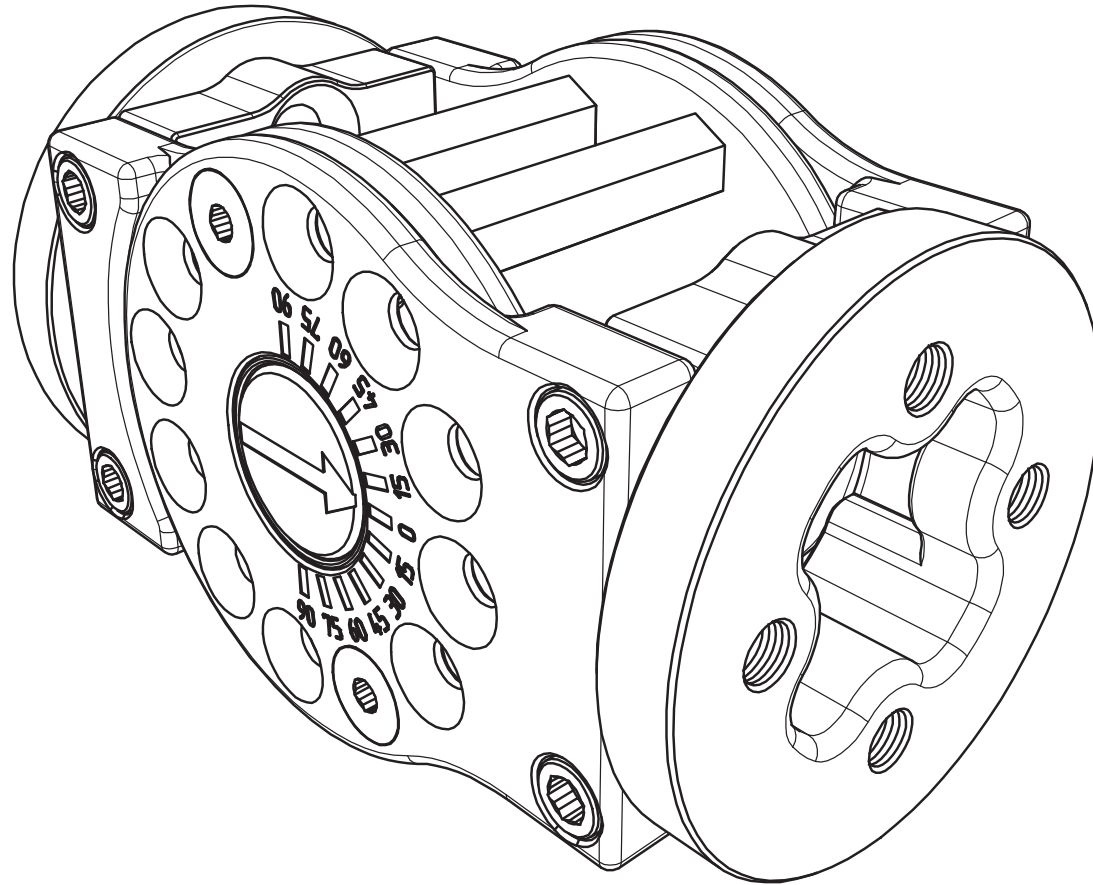




TILT ADAPTER, COMPACT

Quick-Start Manual

Patent #8094520



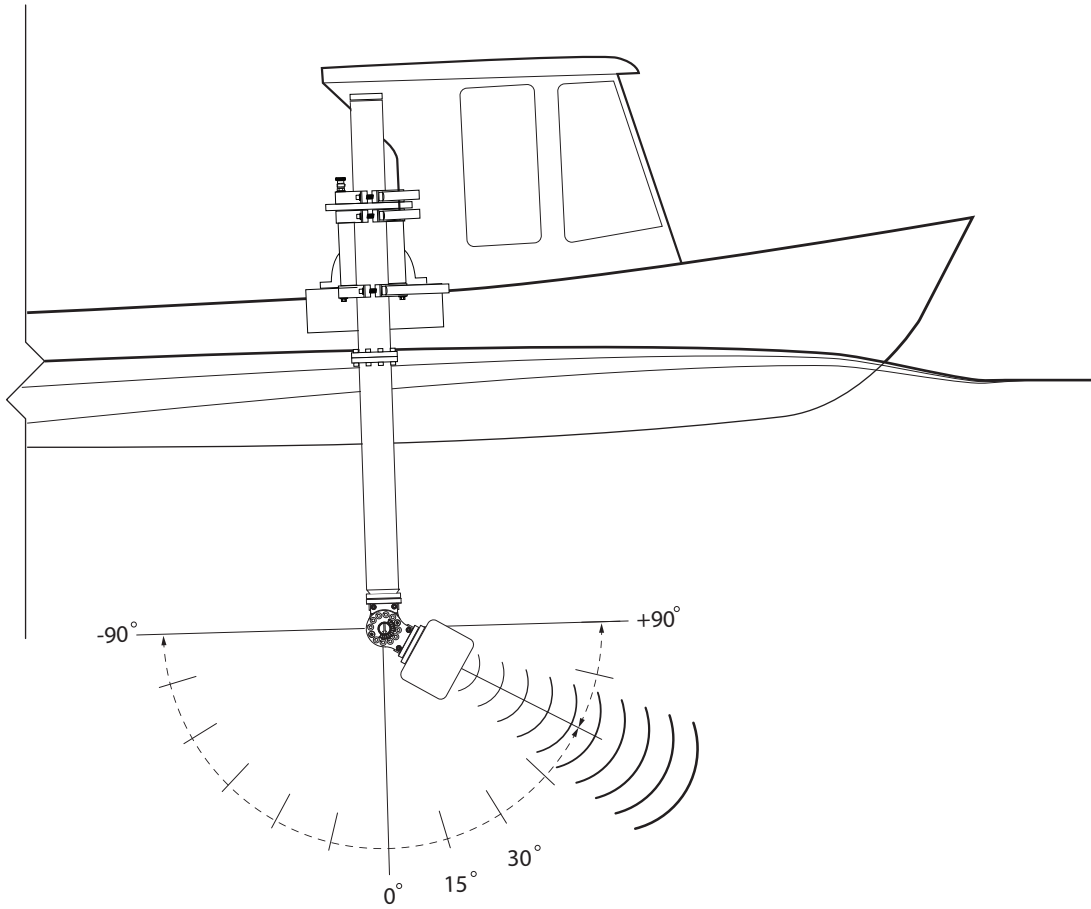


TILT ADAPTER, COMPACT

Quick-Start Manual

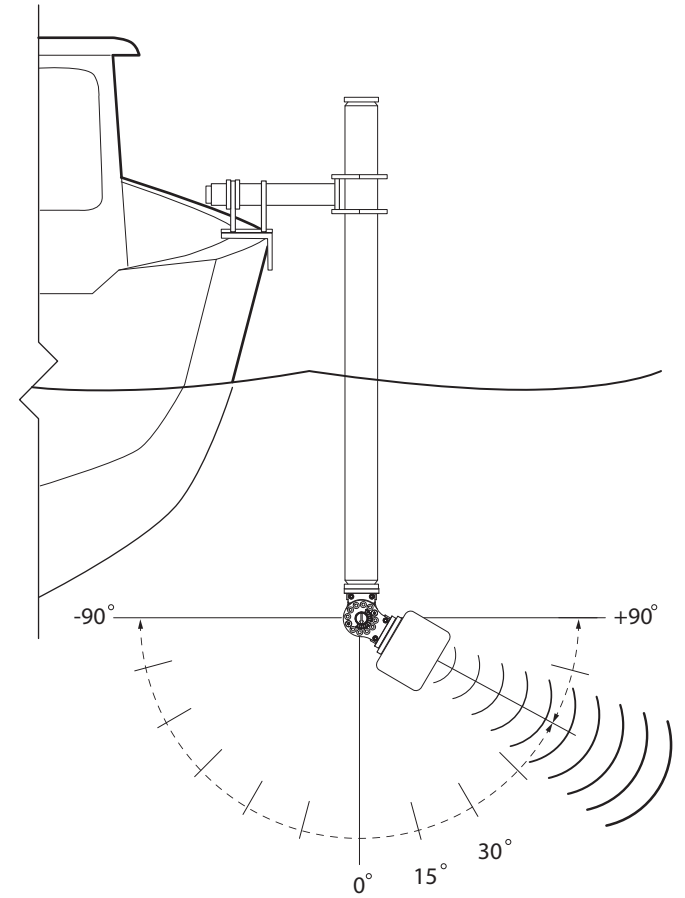
Patent #8094520

TILT ADAPTER OPERATIONAL OVERVIEW



TILT BOW TO STERN

OR



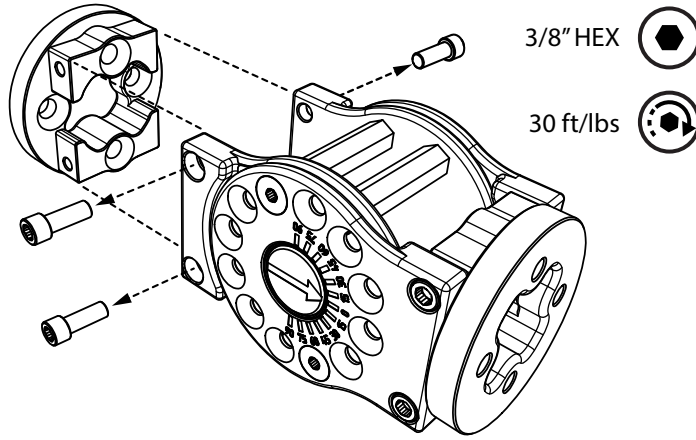
TILT PORT TO STARBOARD



TILT ADAPTER, COMPACT

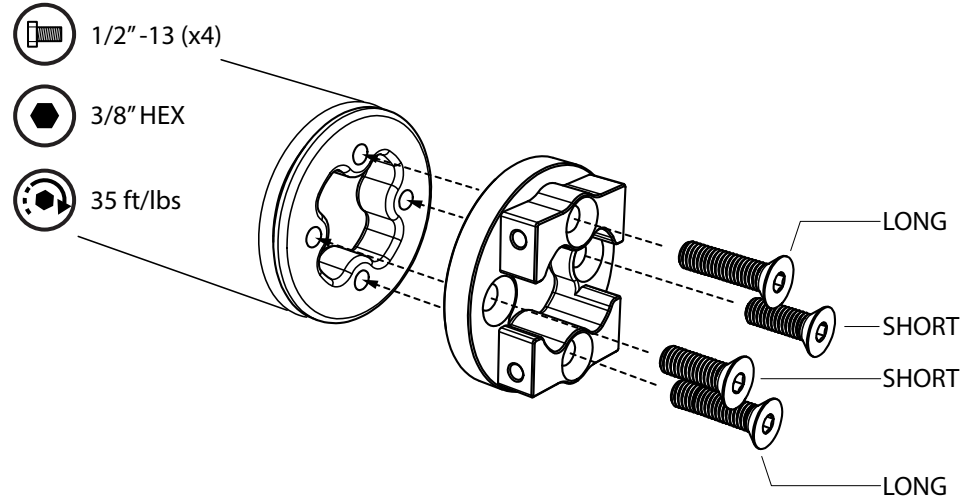
Quick-Start Manual

Patent #8094520



REMOVE POLE MOUNT PLATE - Remove the 4 bolts securing the pole mount plate. The pole mount plate has the counter sunk holes with no threads.

1

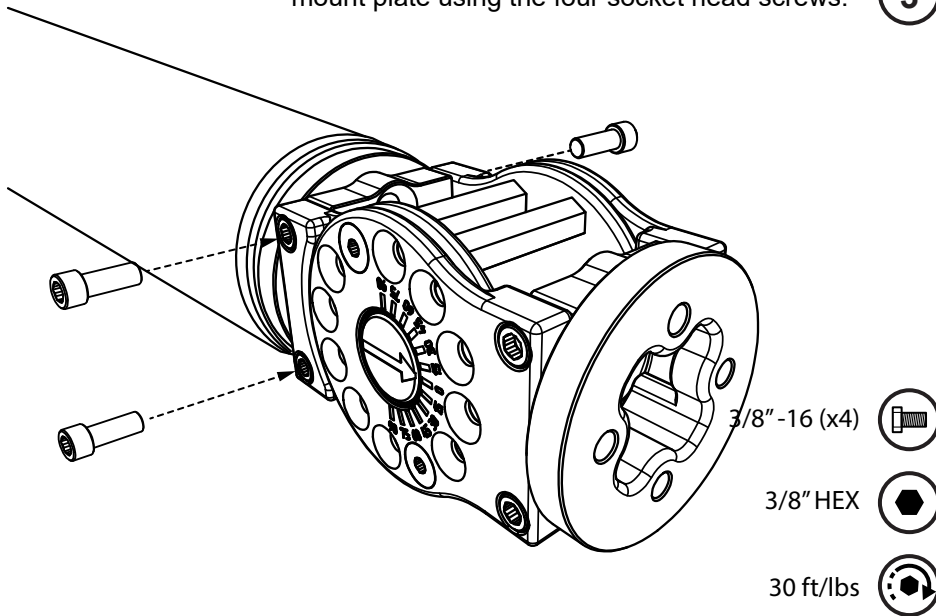


ATTACH TO POLE - Secure the pole mount plate to the pole using the four flat head screws provided.

2

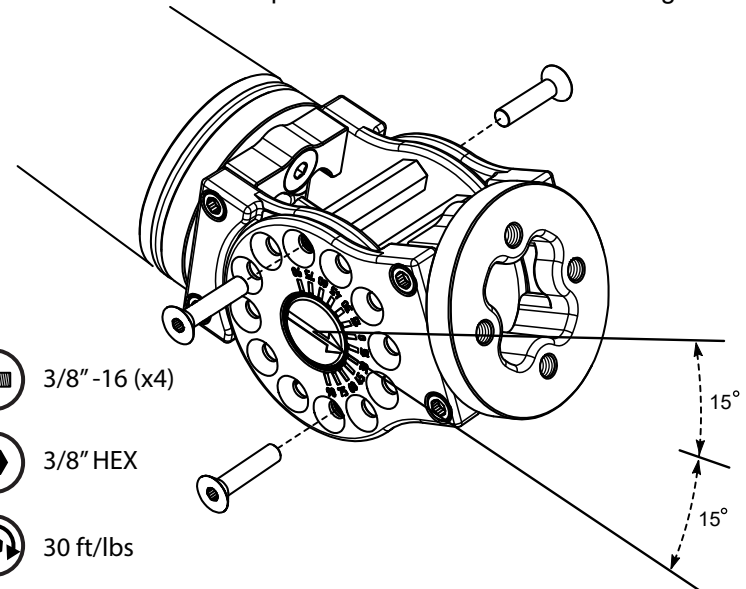
REPLACE BOLTS - Replace the tilt adapter assembly on the pole mount plate using the four socket head screws.

3



TILT ADAPTER - Remove the four flat head bolts allowing the adapter to pivot. Pivot to desired angle. Bolt holes allow 15° angle increments up to 180° of freedom. Replace bolts and attach sonar using the threaded holes.

4

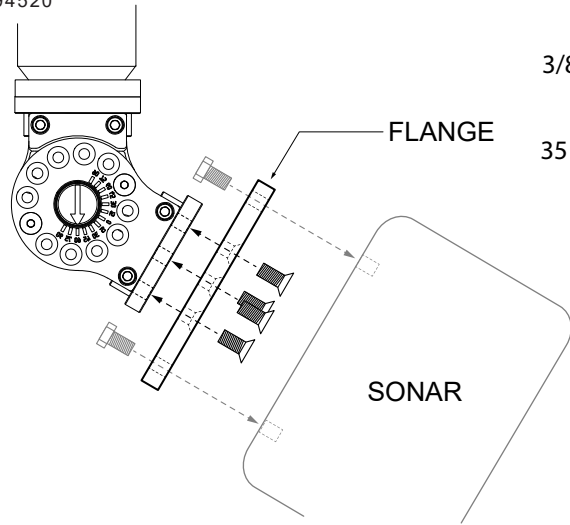




TILT ADAPTER, COMPACT

Quick-Start Manual

Patent #8094520



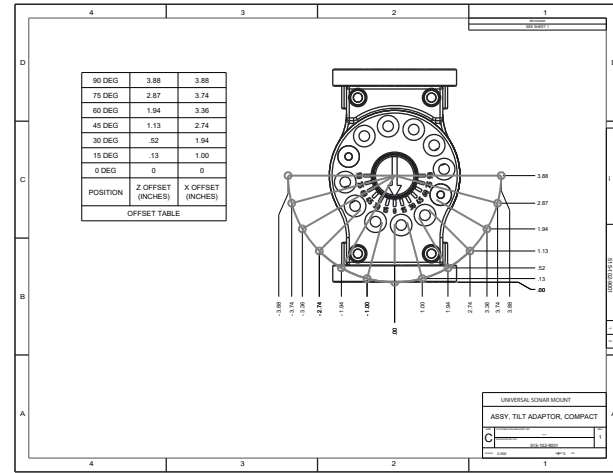
1/2" -13 (x4)



3/8" HEX



35 ft/lbs



BOLT ON FLANGE - Find appropriate flange for your sonar and attach using four 3/8" HEX flat head bolts provided.

1

LOOK UP REFERENCE - For Offset Table See USM Document # 515-102-9001

2

REPLACEMENT PARTS - See USM Document # 515-102-9001

3

MAINTENANCE - Ensure that all stainless hardware is always coated with a marine grade anti-seize product like "Never Seez." Always wash and dry the USM after each use. After the unit is dry, apply a silicone spray or a lubricant that does not make plastic swell, like Boeshield T-9.

4

