

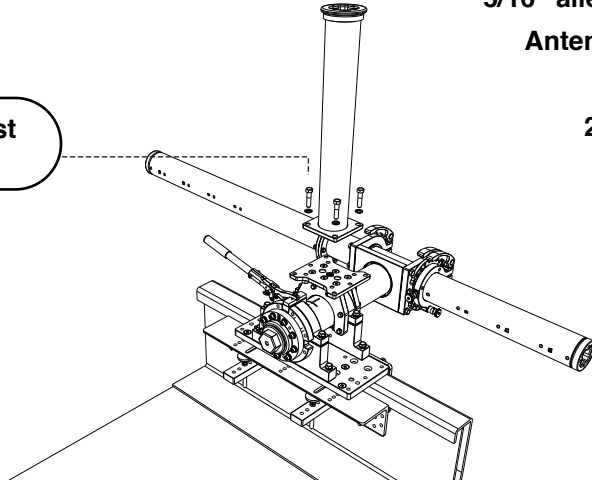


GPS Mast

Installation manual

Patent #8094520

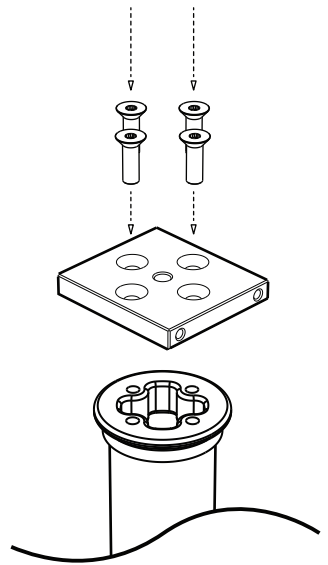
Antenna Mast Bolts



- torque wrench
- 5/16" allen driver
- Antenna Mast Bolts
- 25 Ft/Lbs

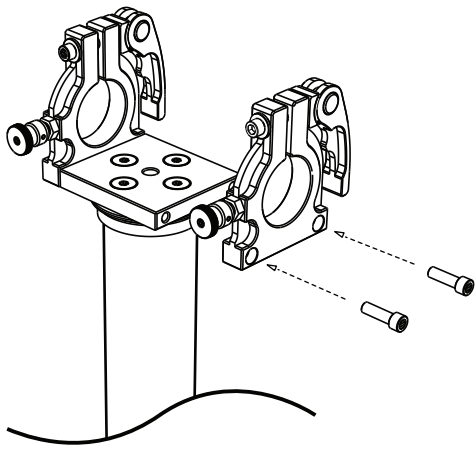
INSTALL GPS MAST - Align GPS mast so 4 bolt holes align and install 4 bolts with flat and lock washers into threaded holes.

- torque wrench
- 5/16" allen driver
- Top Plate Bolts
- 25 Ft/Lbs



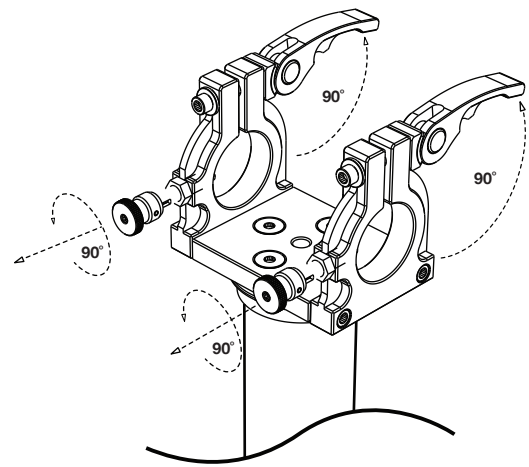
GPS TOP PLATE - Install GPS Top plate with 4 provided bolts.

GPS POLE QUICK-RELEASE CLAMPS - Using the 4 provided bolts, install GPS Quick-Release Clamps with release levers facing outboard.



- torque wrench
- 5/16" allen driver
- Quick Release Clamp Bolts
- 25 Ft/Lbs

PREP GPS QUICK-RELEASE CLAMPS - Open both GPS pole clamps, pull back and turn GPS pole locator pins 90° counter clockwise



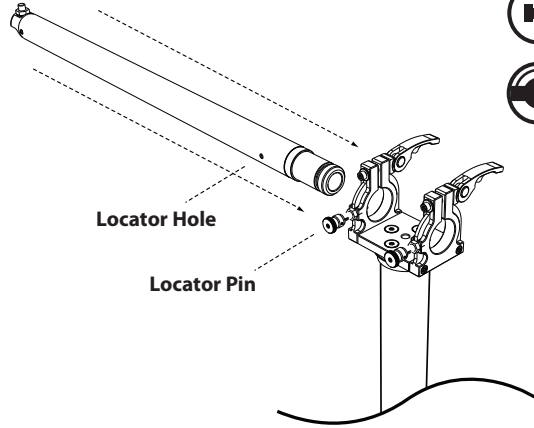


GPS Mast

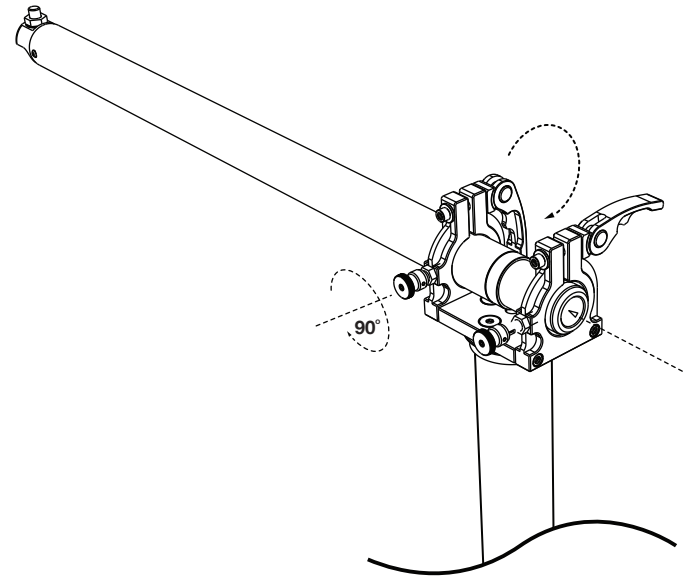
Installation manual

Patent #8094520

GPS Mount bolt faces up

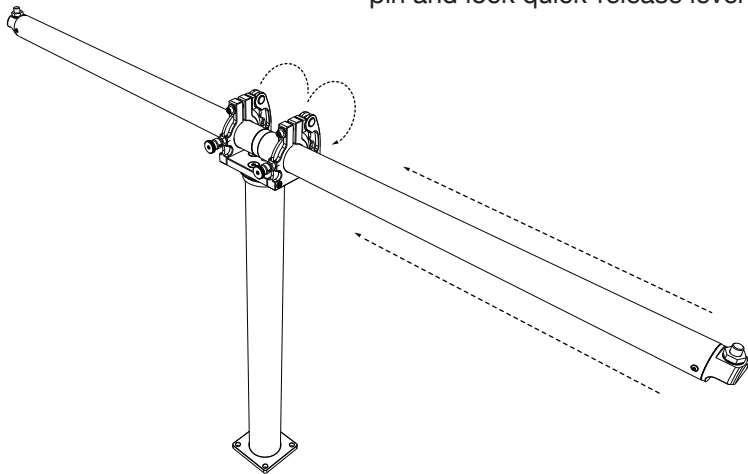


SLIDE IN GPS POLE - Insert GPS plug into GPS pole. Slide GPS pole into quick-release clamp, make sure locator pin on side lines up with locator pin hole



LOCK GPS POLE - After locator pin is engaged, then close GPS quick-release lever

COMPLETE GPS POLE - Insert second GPS pole, being mindful of locator pin and bolt orientation, engage locator pin and lock quick-release lever



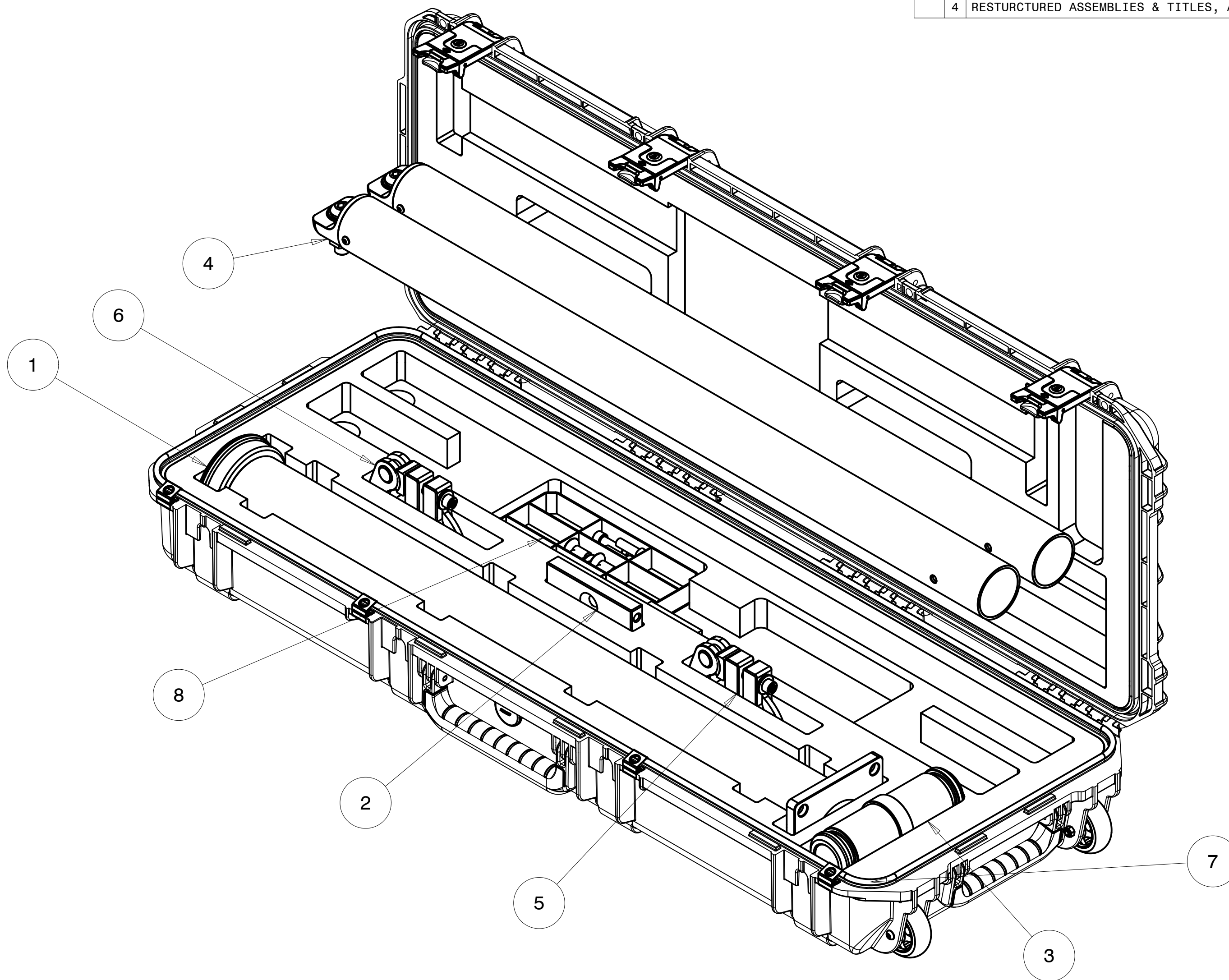
4

3

2

1

REVISIONS				
ZONE	REV	DESCRIPTION	DATE	APPROVED
--	1	INITIAL RELEASE	2017-OCT-18	GS
	2	ADDED LAMINATED DRAWING TO MODEL	2017-NOV-05	GS
	3	CORRECTED BOM, ADDED -02 CLAMP	2019-JAN-16	GS
	4	RESTURCTURED ASSEMBLIES & TITLES, ADDED HARDWARE KIT	2022-NOV-27	MZ



ITEM NO.	QTY REQD.	PART NO.	DRAWING TITLE OR DESCRIPTION	MANUFACTURER	MFG PART NO.
8	1	599-4920-DG	ASSEMBLY, HARDWARE KIT, DIFF GPS POLE	ASSY	---
7	1	520-900-9004-02-S	ASSEMBLY, DIFF GPS POLE CASE, 3.5" MAST, 2M	ASSY	---
6	1	503-9520-02	ASSEMBLY, DIFF GPS POLE CLAMP, 02	ASSY	---
5	1	503-9520-01	ASSEMBLY, DIFF GPS POLE CLAMP, 01	ASSY	---
4	2	503-9512-2M	ASSEMBLY, DIFF GPS POLE SEGMENT, 2M	ASSY	---
3	1	503-1513	DELRIN PLUG, DIFF GPS POLE	FAB	---
2	1	503-1510	BASE PLATE, DIFF GPS POLE	FAB	---
1	1	500-9805-36	POLE, GPS MOUNT, WELDMENT, 36	ASSY	---

UNLESS OTHERWISE SPECIFIED DIMENSIONS ARE IN INCHES. TOLERANCES ARE: .X +/- 0.1 .XX +/- 0.01 .XXX +/- 0.001 ANGLES +/- 0.5 INTERPRET DIMENSIONS PER ASME Y14.5M 1994 (R2004)	CREO REPORTED PARAMETERS		DESIGNER G STAPLES	
	CREO MATERIAL	CREO MASS 28.740	ENGINEER G STAPLES	2017-OCT-18
	CREO VOLUME 2232.235	CREO DRAWING FILE NAME: 520-900-9004-L-02-S	DRAFTER M ZASSO	2022-JUL-27
	DO NOT SCALE DRAWING		CHECKED ---	2022-MMM-DD

UNIVERSAL SONAR MOUNT		
DIFF GPS POLE CASE, 3.5" MAST, 2M		
SIZE	CUSTOMER DRAWING/PART NO. ---	REV 4
DRAWING/PART NO. 520-900-9004-L-02-S		
SCALE	0.275	SHEET 1 OF 3

4

3

2

1

CUSTOMER DRAWING/PART NO. ---
 DRAWING/PART NO. 520-900-9004-L-02-S
 REV 4
 SHT 1

D

D

C

B

A

A

4

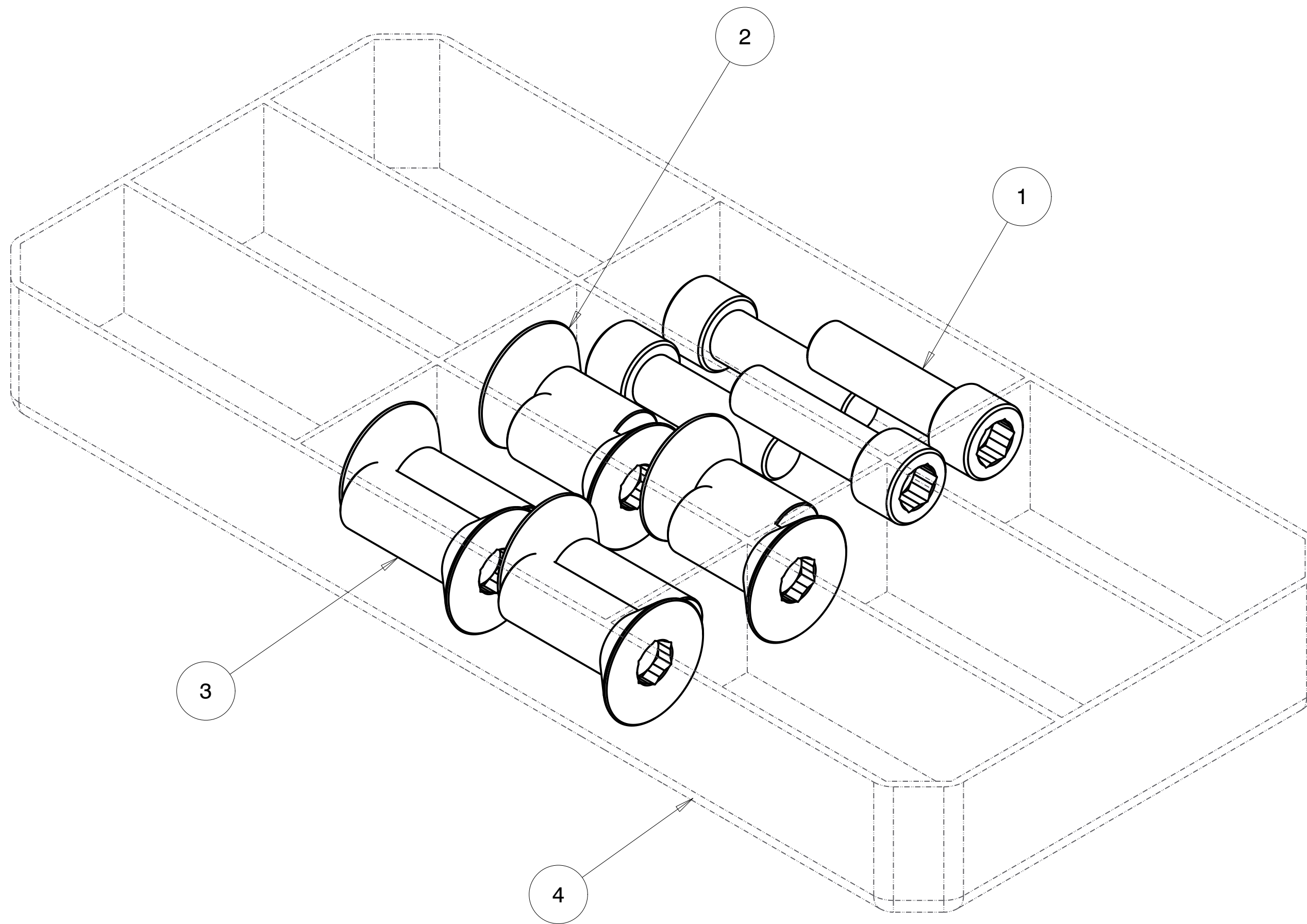
3

2

1

REVISIONS
SEE SHEET 1

DIFF GPS HARDWARE KIT



ITEM NO.	QTY REQD.	PART OR IDENTIFYING NO.	DRAWING TITLE OR DESCRIPTION	MANUFACTURER	MFG PART NO.
4	1	599-4020-DG	HARDWARE BOX, DIFF GPS POLE	FLAMBEAU	T3003
3	4	90-110-500C-1250-20	SCREW, 1/2-13 UNC X 1.25 FHC 18-8	MCMASTER	92210A714
2	4	90-110-500C-1000-20	SCREW, 1/2-13 UNC X 1.00 FHC 18-8	MCMASTER	92210A712
1	4	90-100-375C-1250-20	SCREW, 3/8-16 X 1.250 SHC 18-8	MCMASTER	92196A626

UNIVERSAL SONAR MOUNT		
DIFF GPS POLE CASE, 3.5" MAST, 2M		
SIZE	CUSTOMER DRAWING/PART NO.	REV
C	---	4
DRAWING/PART NO.		
520-900-9004-L-02-S		
SCALE	0.250	SHEET 2 OF 3

CUSTOMER DRAWING/PART NO. ---
 DRAWING/PART NO. 520-900-9004-L-02-S
 REV 4
 SHT 2

4

3

2

1

A

D

C

B

A

4

3

2

1

REVISIONS
SEE SHEET 1

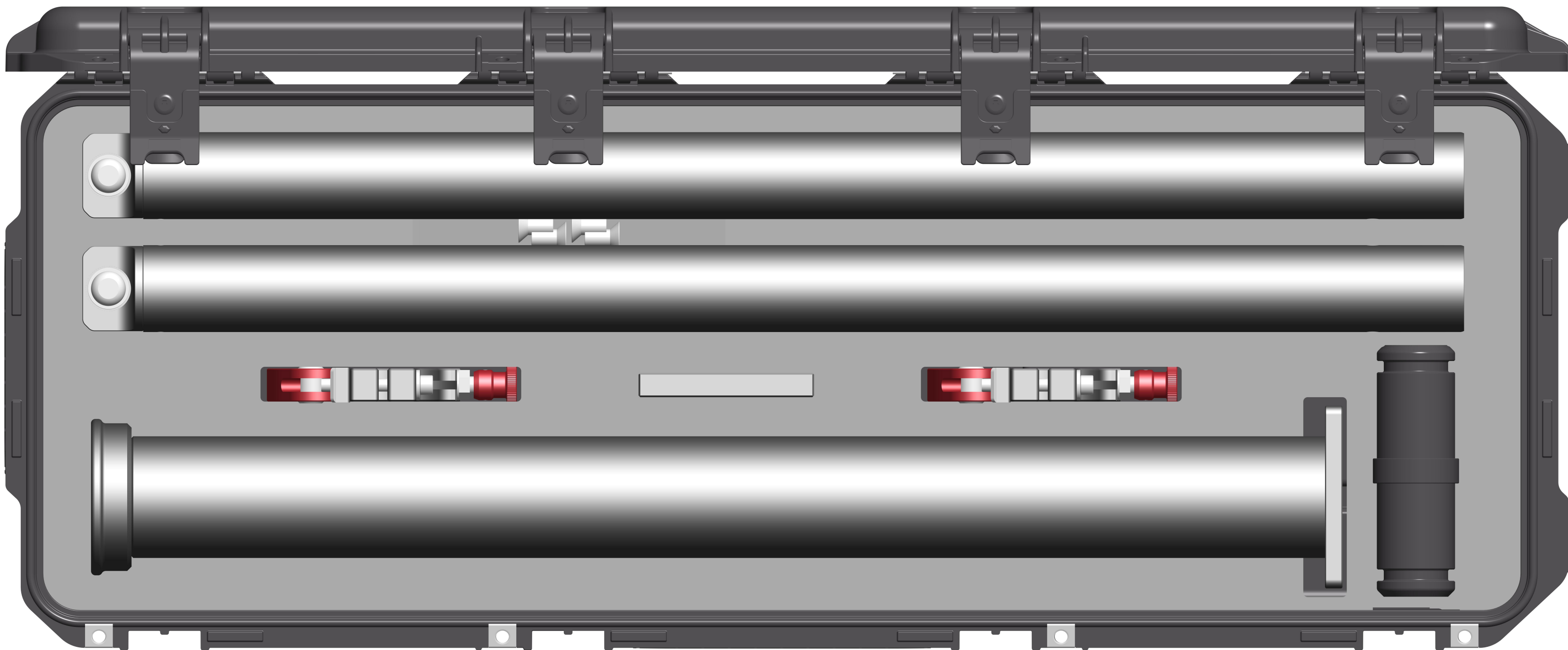
D

D

C

B

A



CUSTOMER DRAWING/PART NO. ---

DRAWING/PART NO. 520-900-9004-L-02-S

REV 4

SHT 3

UNIVERSAL SONAR MOUNT		
DIFF GPS POLE CASE, 3.5" MAST, 2M		
SIZE	CUSTOMER DRAWING/PART NO.	REV
C	---	4
	DRAWING/PART NO. 520-900-9004-L-02-S	
SCALE	0.400	SHEET 3 OF 3

4

3

2

1

A