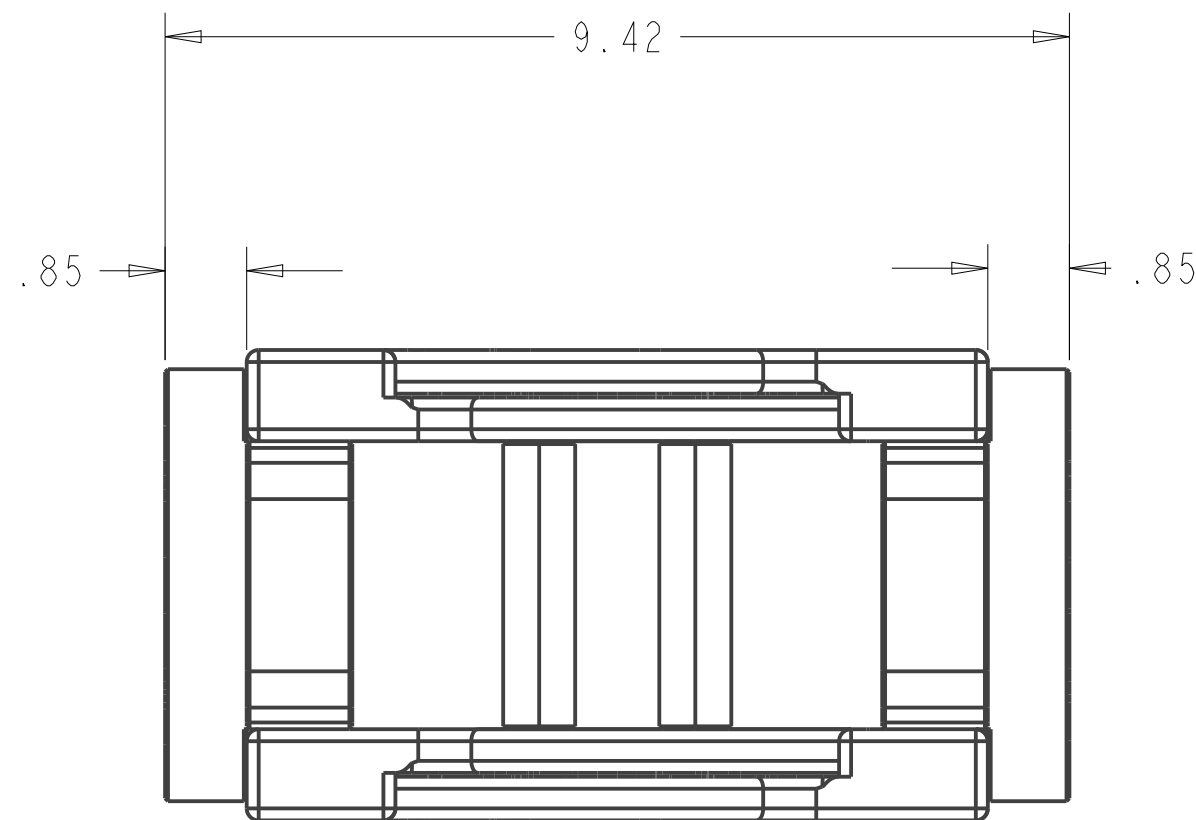
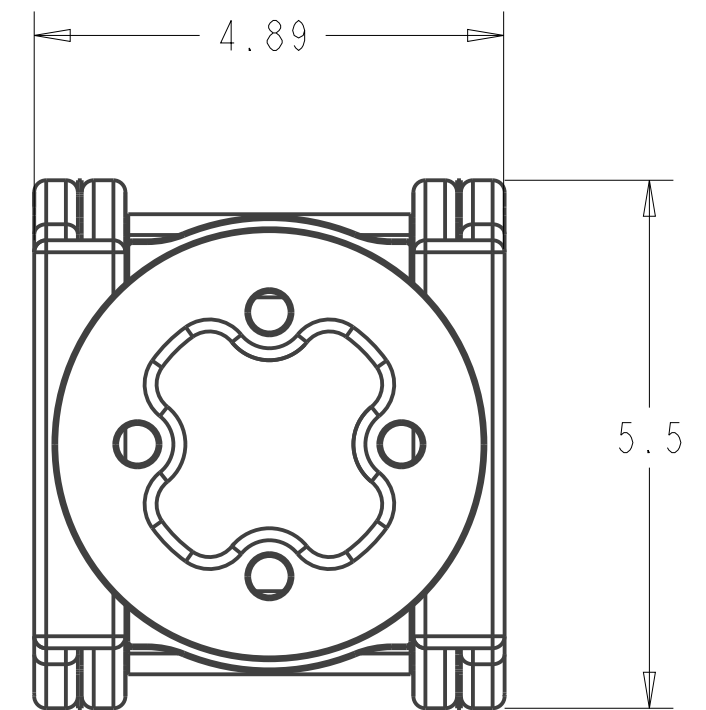
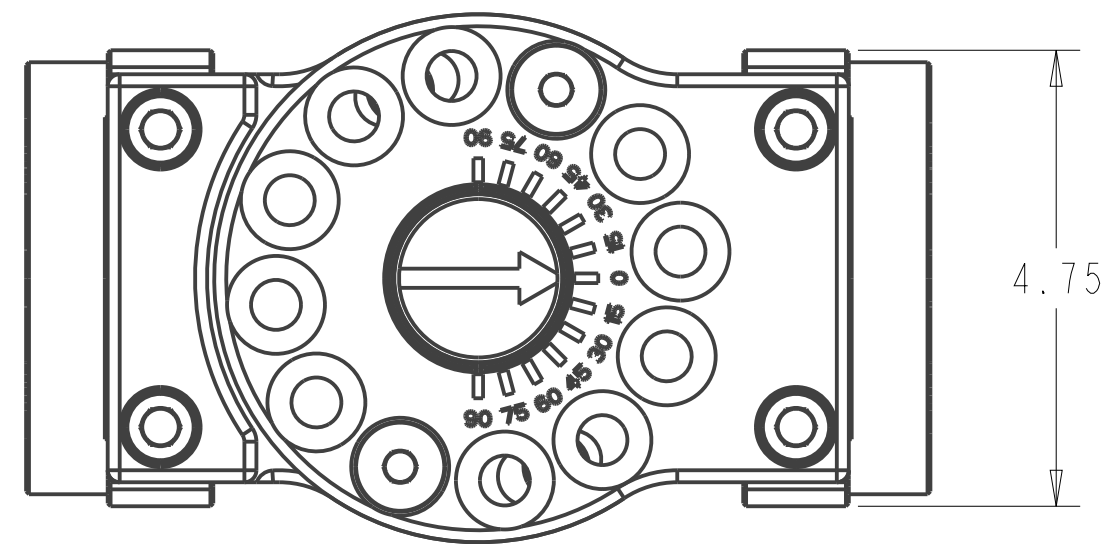
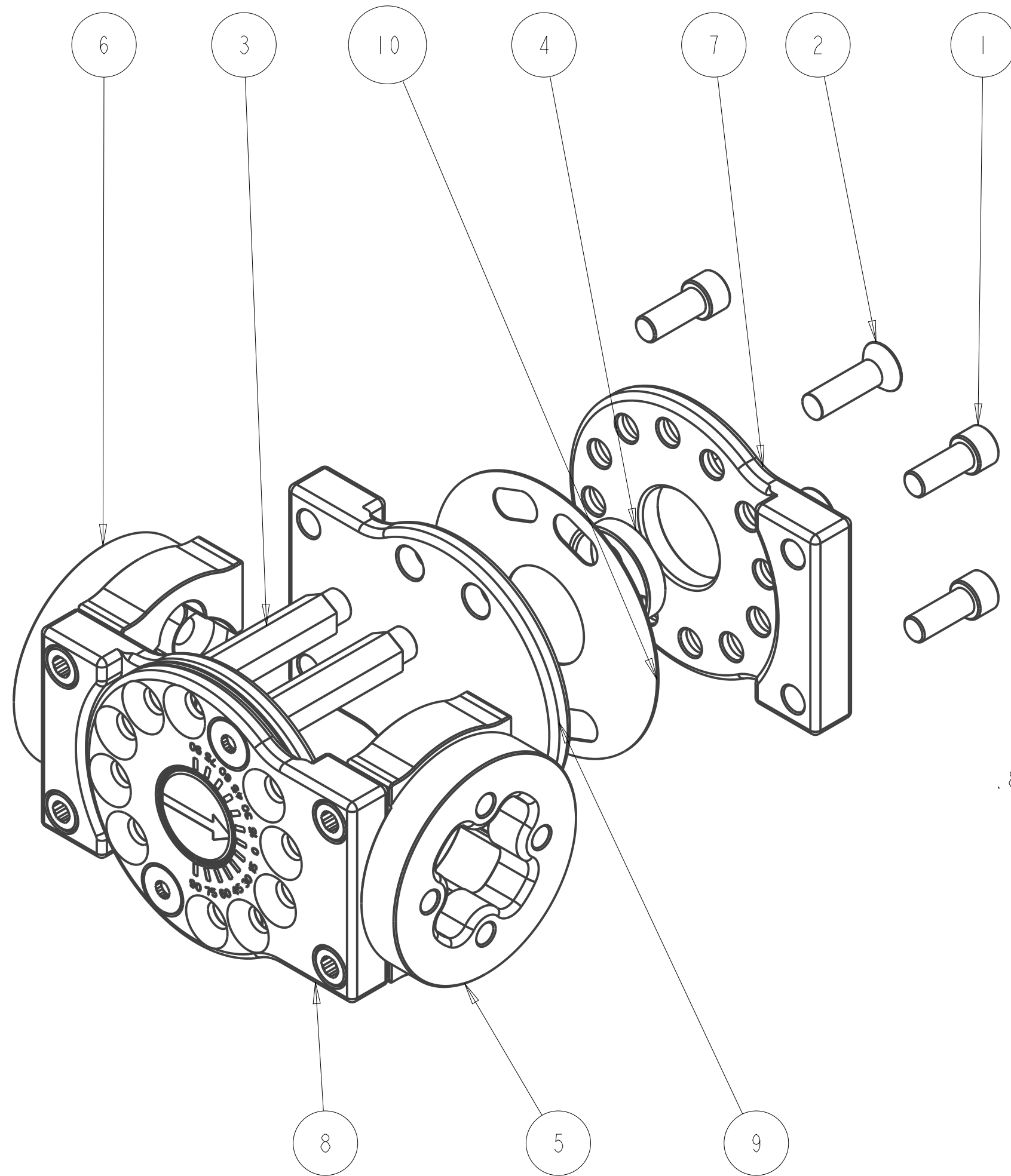


REVISIONS				
ZONE	REV	DESCRIPTION	DATE	APPROVED
--	1	INITIAL RELEASE	02018-JUN-22	--
--	2	BROKE 1011 INTO TWO PARTS -01 & -02	02020-JUL-07	--
--	3	SYNC PART NAMES	02020-JUL-16	--



ITEM NO.	QTY RECD.	PART NO.	DRAWING TITLE OR DESCRIPTION	MANUFACTURER	MFG PART NO.
10	2	515-102-1013	TILT ADAPTER, THRUST SHEET, USM	FAB	---
9	2	515-102-1012	TILT ADAPTER, 15° FIXED PLATE	FAB	---
8	1	515-102-1011-02	TILT ADAPTER, 15° INDEX PLATE -02	FAB	---
7	1	515-102-1011-01	TILT ADAPTER, 15° INDEX PLATE -01	FAB	---
6	1	515-102-1010-02	TILT ADAPTER, POLE MOUNT PLATE	FAB	---
5	1	515-102-1010-01	TILT ADAPTER, SONAR MOUNT PLATE	FAB	---
4	2	500-1554	TILT ADAPTER, PIVOT BUSHING, USM	FAB	---
3	4	500-1552	TILT ADAPTER, HEX SPACER, USM	FAB	---
2	4	90-110-500C-1750-20	SCREW, 1/2-13 UNC X 1.75 FHC 18-8	MCMASTER	92240A718
1	8	90-100-500C-1250-20	SCREW, 1/2-13 UNC X 1.25 SCH, SST 18-8	MCMASTER	92196A714

UNLESS OTHERWISE SPECIFIED DIMENSIONS ARE IN INCHES.		PRO/E REPORTED PARAMETERS		DESIGNER	
TOLERANCES ARE:		PRO/E MATERIAL		G STAPLES	
.X +/- 0.1	PRO/E MASS	N/A		ENGINEER	G STAPLES 02018-JUN-22
.XX +/- 0.01	PRO/E VOLUME	11.090		DRAFTER	NICK UEBEL 02018-JUN-22
.XXX +/- 0.001	PRO/E DRAWING FILE NAME:	515-102-9010		CHECKED	---
ANGLES +/- 0.5	INTERPRET DIMENSIONS PER ASME Y14.5M 1994 (R2004)				02017-MMM-DD
				DO NOT SCALE DRAWING	

UNIVERSAL SONAR MOUNT		
ASSY, TILT ADAPTER 15 DEGREES		
SIZE	CUSTOMER DRAWING/PART NO.	REV
<b>C</b>	---	<b>3</b>
	DRAWING/PART NO.	
	515-102-9010	
SCALE	0.500	SHEET 1 OF 2

CUSTOMER DRAWING/PART NO. 515-102-9010  
 DRAWING/PART NO. 515-102-9010  
 REV 3  
 SH 1

4

3

2

1

REVISIONS  
SEE SHEET 1

D

CUSTOMER DRAWING/PART NO. ---

DRAWING/PART NO.

515-102-9010

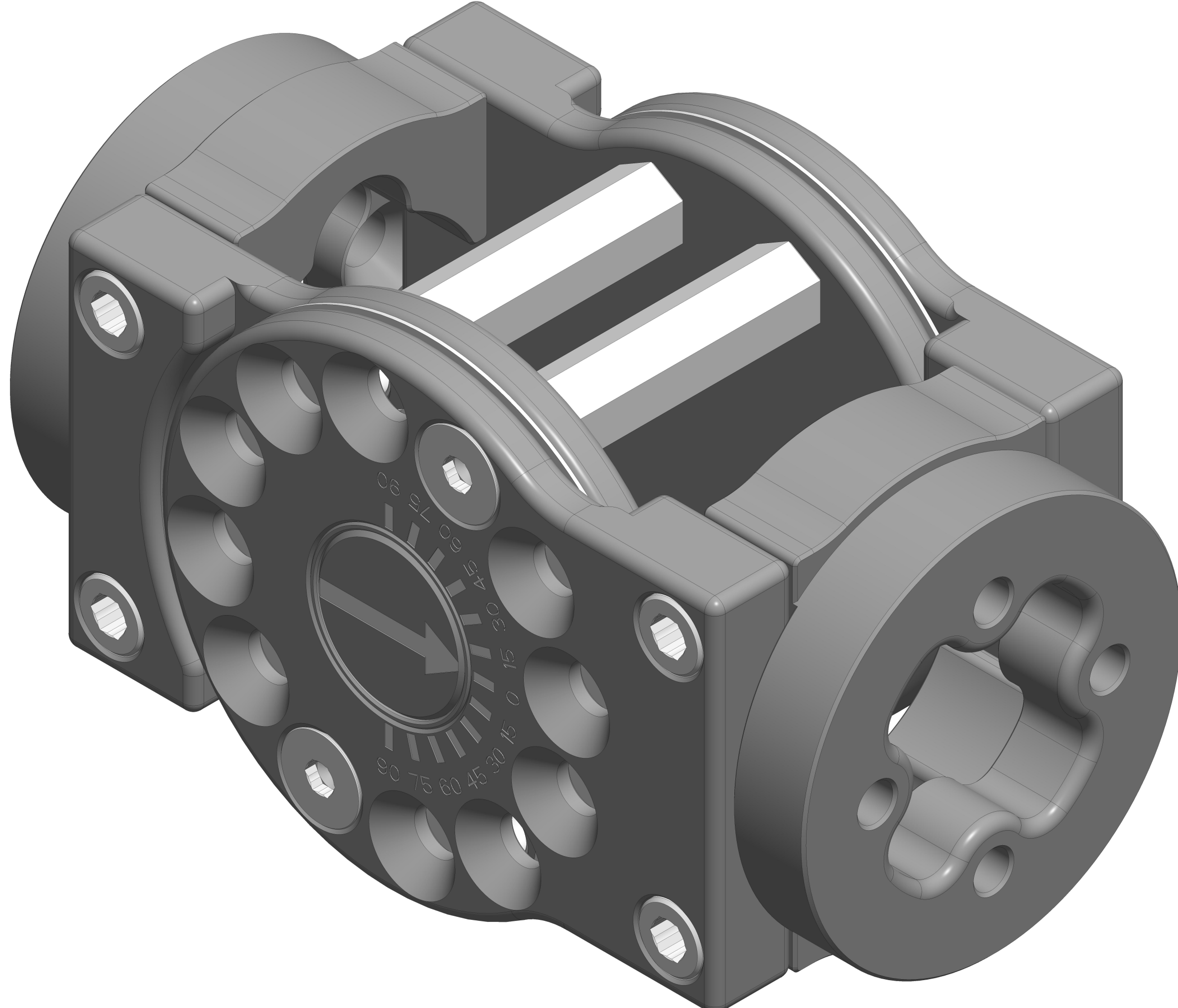
REV

3

SHT

2

A



<b>UNIVERSAL SONAR MOUNT</b>		
ASSY, TILT ADAPTER 15 DEGREES		
SIZE	CUSTOMER DRAWING/PART NO.	REV
<b>C</b>	---	<b>3</b>
	DRAWING/PART NO.	
	515-102-9010	
SCALE	1.250	SHEET 2 OF 2

4

3

2

1

A