



# ISLAND RANGE HOOD

Live Smart, Better Life!

**IRATB75 & IRATB90**

**IRATS75 & IRATS90**

**IRPTS75 & IRPTS90**

Instruction / Installation Manual

☎ 1 (844) 334-4203

🌐 [www.thermomate.com](http://www.thermomate.com)

✉ [support@thermomate.com](mailto:support@thermomate.com)

📍 3330-A Marathon Ct Charleston, SC 29418



# Contents

Introduction .....	02
Safety Precaution .....	02
Installation Instructions .....	03
Air Outlet Installation Method .....	05
Island Model Installation .....	06
Operation .....	08
Maintenance .....	09
Oil cup installation .....	11
Troubleshooting .....	12
Environmental Protection .....	12



## INTRODUCTION

Thank you for choosing this range hood.

- This instruction manual is designed to provide you with all required instructions related to the installation, use and maintenance of the appliance.
- In order to operate the unit correctly and safely, please read this instruction manual carefully before installation and usage.

## Safety Precaution

- Never let the children operate the range hood.
- The range hood is for home use only, not suitable for barbecue, roast shop and other commercial purpose.
- Clean the range hood according to the instruction manual and keep the unit from danger of burning. There is a fire risk if cleaning is not carried out in accordance with the instructions.
- Please keep the kitchen room with good convection before connecting this range hood; please check that the power supply cord is undamaged. A damaged supply cord must be replaced by qualified service personnel only.
- Regulations concerning the discharge of air have to be fulfilled.
- This range hood can be used by children aged from 8 years and above and also the persons with reduced physical, sensory or mental capabilities or lack of experience and knowledge if they have been given supervision or instruction concerning use of the range hood in a safe way and understand the hazards involved. Children shall not play with the range hood. Cleaning and user maintenance shall not be made by children without supervision.
- If the supply cord is damaged, it must be replaced by the manufacturer, its service agent or similarly qualified persons in order to avoid a hazard.



### CAUTION:

Accessible parts may become hot when used with cooking appliance.

### Electrical shock hazard

Only plug this unit into a properly earthed outlet.

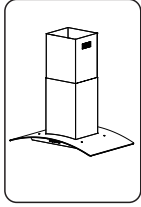
If you have doubts, seek advice from a suitably qualified engineer.











1(844) 334-4203

support@thermomate.com

## Hardware Included



 X 11	 X 11	 X 6	 X 40	 X 4
St4 X 30	$\phi 5$ X $\phi 30$	M6 X 50	M5 X 10	St4 X 6
 X 16	 X 16	 X 1		

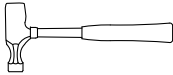
## Tools Required



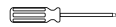
Pencil



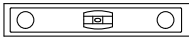
Measuring tape



Hammer



Screwdriver

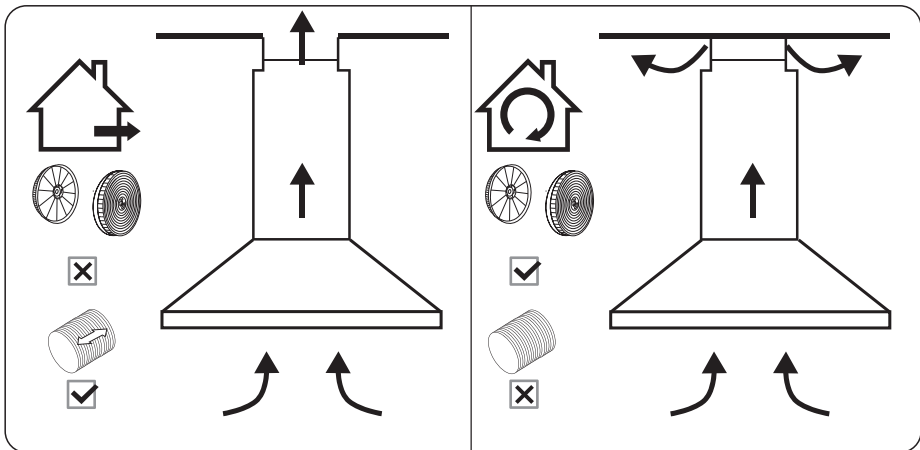


Level

Electric drill or  
powered screwdriver

## INSTALLATION INSTRUCTIONS

### Prepare For Installation



Ducted Option

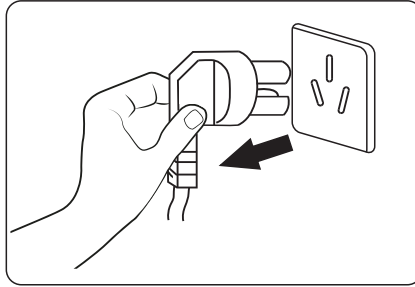
Recirculation Option

1(844) 334-4203

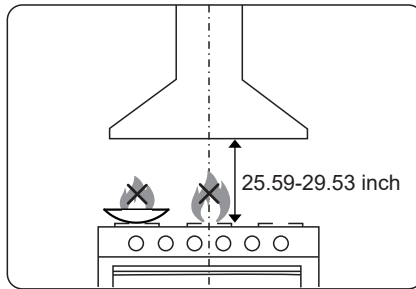
support@thermomate.com



- a. If you have an outlet to the outside, your range hood can be connected as above picture by means of a pipe (with an interior diameter of 5.91 inch). If you don't have an outlet to the outside, you can go with re-circulation mode by using carbon filter.



- b. Before installation, turn the unit off and unplug it from the outlet.



- c. The range hood should be placed at a distance of 25.59-29.53 inch above the cooktop for the best effect.

**Note:** No open flames directly approach to the range hood.



## AIR OUTLE TINSTALLATION METHOD

Installation method for 5.91inch

Diameter pipe: insert the one-way-valve as the pic and fix the pipe.

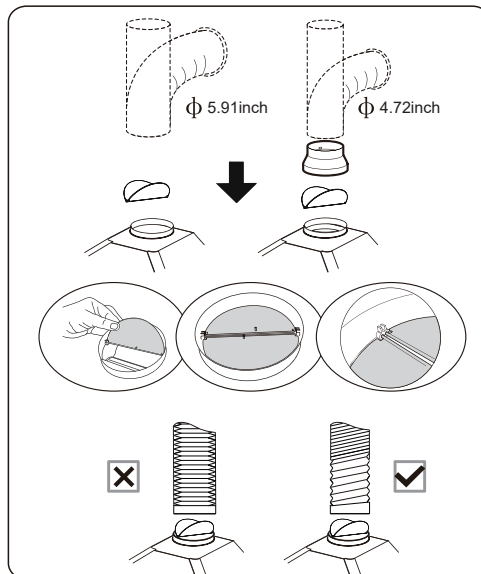
**Attention:** The bump of the one-way-valve must be upward.

Installation method for 4.72 inch

Diameter pipe: insert the damper as the picture and fix the converter before placing the duct.

The pipe near the air outlet need to be fully extended.

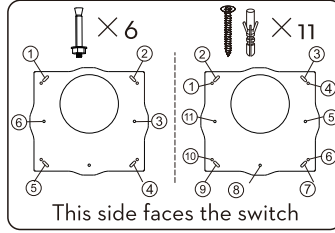
Drill 0.31 inch extra holes and fix screws & plastic wall anchors before installation.



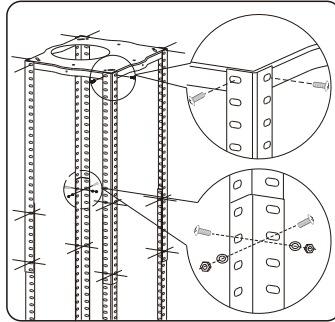
## ISLAND MODEL INSTALLATION

Position the hanging plate on the ceiling and then mark the position of the screw holes. The hanging plate should be securely fixed to the ceiling.

1. 6\*expansion bolts for cement ceiling.
2. 11\*ST4×30 screws for wooden ceiling.



Fix the angle bars to the mounting plate, using the 8\*M5×10 screws. Extend the angle bars to the required height and then fix them in position using the 16\*M5×10 screws and nuts with metal washers.



**Important:** The angle bars must have an overlap of AT LEAST 3.94 inch.

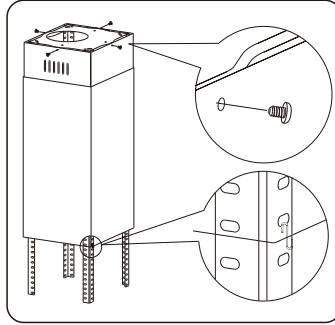




If your range hood is going to be used in extraction mode, then you should connect the ducting hose to the ceiling adaptor at this point.

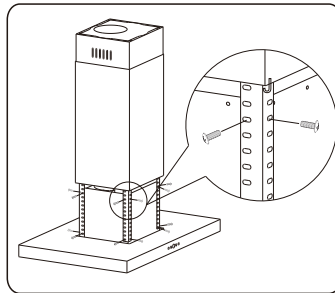
Fix the upper chimney section to the hanging plate, using the 4×ST4x6.

Slide the lower chimney section onto the angle bars and raise it until it sits just below the upper chimney section.

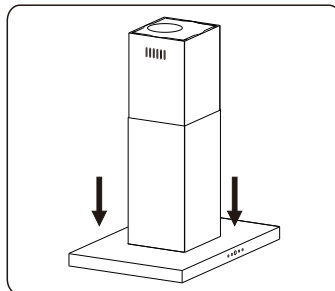


**Important:** This stage of the installation process **MUST** be completed by two people.

**Important:** The 16×M5x10 screws **MUST** be securely tightened.



Remove the hanging hook and then slide the lower chimney section downwards, until it rests against the main body of the range hood.



## OPERATION

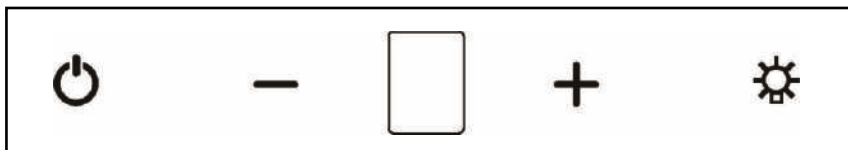
### Product functions

This appliance extracts the air of the kitchen to remove the odours and keep an optimum level of air quality inside the room, it also allows you to illuminate the cooking area.

### Switching on/off

Switch on the appliance at the switched fused connection unit. The appliance is ready for use.

### Touch Control Panel



ON/OFF key

Press it for 3 seconds to turn power on, press again to turn power off.



Power down key

On working condition, press this key to decrease the power one level.



Digital display

The working speed shows on this display screen.



Power up key

On working condition, press this key to increase the power one level.





Light key

Press one time for turning the lights on, press another to turn the lights off.



## Delay function

When motor is on working condition, press  for 3 seconds to set 5 minutes delay, the number on the display screen blinks when delay function is activated. Press  again to cancel the delay, the display screen keeps bright when the delay is successfully canceled.

To obtain the best results from your range hood it is recommended that you leave it switched on for 15 minutes after you have finished cooking.

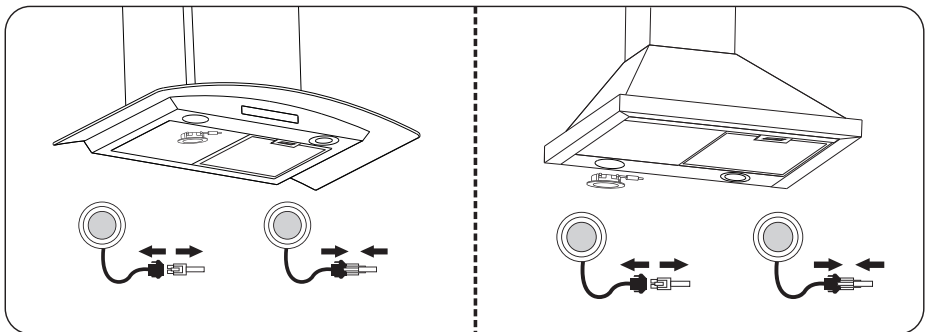
## MAINTENANCE

Before cleaning switch the unit off and pull out the plug.

### Regular Cleaning

Use a soft cloth moistened with hand-warm mildly soapy water or household cleaning detergent. Never use metal pads, chemical, abrasive material or stiff brush to clean the unit.

The Bulb may be hot, leave it 10 minutes before replacement.

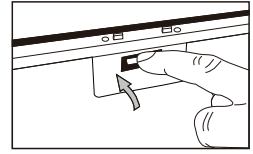
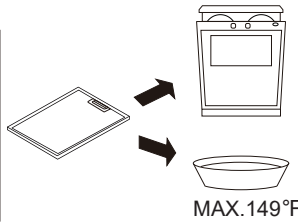
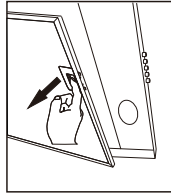


### Aluminium and carbon filters replacement

In order to install the carbon filter, the grease filter should be detached first. Press the lock and pull it downward.



1 MONTHS



**Aluminium filters:** To avoid fires, clean thoroughly once a month or whenever the display pilot lights up (if fitted). To do so, remove the filters and soak in hot water and detergent for an hour. If using a dishwasher, position the filters vertically to improve the cleaning process.

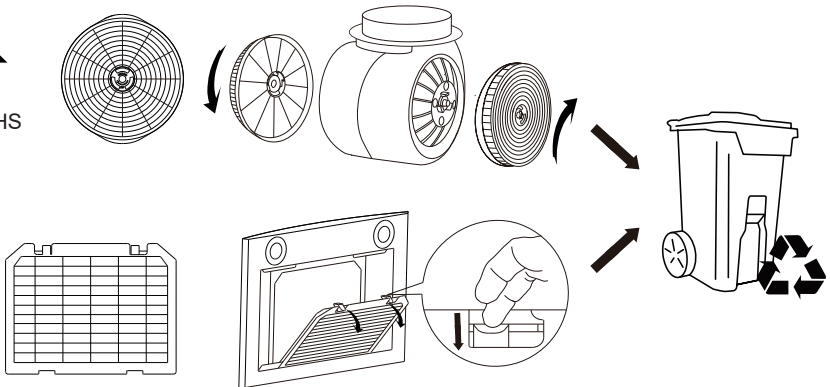
### Carbon filter life time

Suggest changing to new one every 3 months (According to different kitchen condition, the life time of carbon filter might be longer or shorter than 3 months).

**Installation:** Fix carbon filter into the unit and turn it in clockwise direction. Repeat the same on the other side.



3 MONTHS



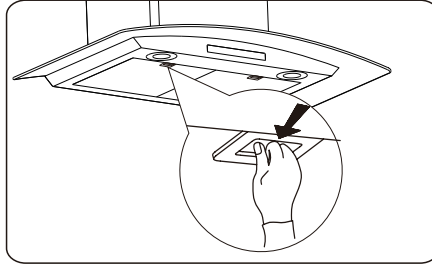
### Important Notice:

1. Make sure the filter is securely locked. Otherwise, it would loosen and cause abnormal noise and danger.
2. Using carbon filter would reduce the airflow of the range hood.

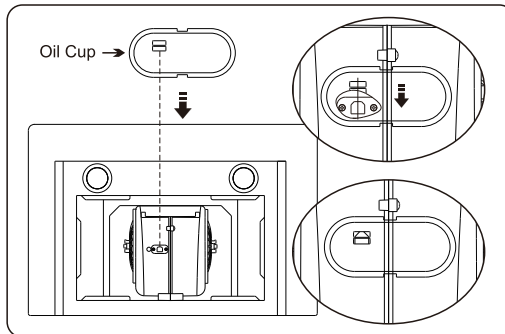


## OIL CUP INSTALLATION

1. Open the aluminum/baffle filters, find the bracket on the oil cup lock on the motor cover.



2. Line up oil cup.
3. Pull down.
4. Snap into place.



5. After the oil is filled, remove the oil cup, clean it and reinstall it for recycling.



## TROUBLE-SHOOTING

Fault	Cause	Solution
Light on, but fan does not work	The fan blade is jammed.	Switch off the unit and repair by qualified service personnel only.
	The motor is damaged.	
Both light and fan do not work	Light bulb burn.	Replace the LED light with correct rating.
	Power cord is loose.	Plug into the power supply again.
Serious Vibration of the unit	The fan blade is damaged.	Switch off the unit and repair by qualified service personnel only.
	The fan motor is not fixed tightly.	
	The unit is not hung properly on the bracket.	Take down the unit and check whether the bracket is in proper location.
Suction performance not good	Too far distance between the unit and the cooktop.	Readjust the distance between 25.59-29.53 inch.

## ENVIRONMENTAL PROTECTION

Waste electrical products should not be disposed of with household waste. Please recycle where facilities exist. Check with your Local Authority or retailer for recycling advice.





☎ 1 (844) 334-4203

🌐 [www.thermomate.com](http://www.thermomate.com)

✉ [support@thermomate.com](mailto:support@thermomate.com)

📍 3330-A Marathon Ct Charleston, SC 29418

