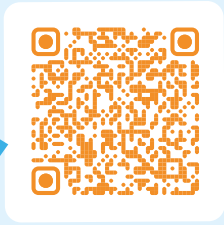




SCAN FOR MORE NANO MAGIC!



MAKE YOUR OWN... **Fin-tastic Friend**

FOLLOW THE STEPS INSIDE TO MAKE YOUR VERY OWN MAGIC FIN-TASTIC FRIEND.

You will need these items from your kit:

- *Fin-tastic* press-out
- Nano tape
- Blue slime
- Felt-tip pen
- Keychain (You will also need: • Scissors **ASK AN ADULT TO HELP WITH THESE!**)

Tips and Nano Magic Tricks

Scan the QR code on the front of this leaflet for video tutorials, templates, step-by-step instructions and loads of inspiration for fun crafts you could make. You'll be a nano wizard in no time!

Like all crafts, nano tape takes practise. Our magic creations have star ratings next to each tutorial, so you can find one that's the right level for you. Start with 'magic', then progress to more complex tutorials as your confidence grows.

- ★ **MAGIC**
- ★★ **SPELLBINDING**
- ★★★ **WOW!**

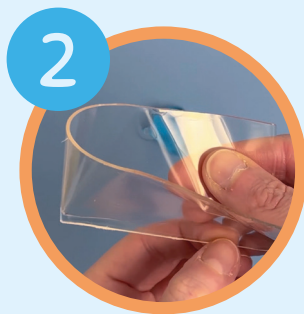
Part of the magic of nano tape is that it's super, super sticky! To stop your tape from sticking to your table top, try laying down a sheet of baking paper or some of the discarded backing film before you get crafty!

Nano magic doesn't last for ever. Have fun making lots of cute crafts and enjoy them while they last. Take lots of photos of your amazing creations to share with your friends. You could even try making your own tutorial videos. It's a viral trend, after all!

Remember, scissors are sharp! Always ask an adult to help you cut your tape. The nano magic might rub off on them, too!



1 First, take your *fin*-tastic press-out and cover both sides in nano or sticky tape. This will make it stronger and stop it getting soggy in slime. Trim the edges to keep the shape tidy.



2 Cut a length of nano tape - around 18 cm is perfect. Fold it in half and seal along one side, leaving a gap in the middle.



3 Push some blue slime against the sealed side.



4 Add your fishy friend and a little more slime. Remember to leave enough space at the top and side to seal your bag afterwards.



5 Press the open side to seal your bag.



6 Peel the backing film off of your bag so it's easier to mould.



7 Pinch the top to close.



8 Add some crease details with your felt-tip pen.



9 Take your keychain and open the clasp.



10 Ask an adult to make a small hole in the top of the bag using scissors. Thread through the clasp of the keychain and pinch to close.

EVEN MORE MAGIC...

Create more pocket pets by drawing your own sea creatures onto a piece of card. Cover them in nano or sticky tape, then cut them out. You could make more slime bags in lots of different shades!



For more Nano Tape Magic, visit: <https://www.curiousuniverse.co.uk/pages/tja4d8p>

