



SCAN FOR MORE  
NANO MAGIC!



MAKE YOUR OWN...

# Bubble Kit-tea Squishy



FOLLOW THE STEPS INSIDE TO MAKE YOUR VERY OWN BUBBLE KIT-TEA.

You will need these items from your kit:

- Press-out ears
- Nano tape
- Blue slime
- Felt-tip pen
- Beads
- Star sparkles
- Short straw

( You will also need: • Scissors **ASK AN ADULT TO HELP WITH THESE!** )

## Tips and Nano Magic Tricks

Scan the QR code on the front of this leaflet for video tutorials, templates, step-by-step instructions and loads of inspiration for fun crafts you could make. You'll be a nano wizard in no time!

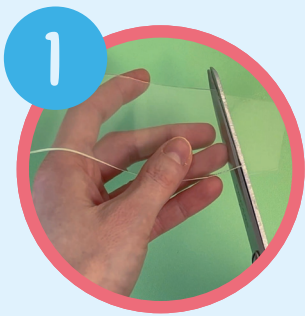
Like all crafts, nano tape takes practise. Our magic creations have star ratings next to each tutorial, so you can find one that's the right level for you. Start with 'magic', then progress to more complex tutorials as your confidence grows.

★ **MAGIC**    ★★ **SPELLBINDING**    ★★★ **WOW!**    ★

Part of the magic of nano tape is that it's super, super sticky! To stop your tape from sticking to your table top, try laying down a sheet of baking paper or some of the discarded backing film before you get crafty!

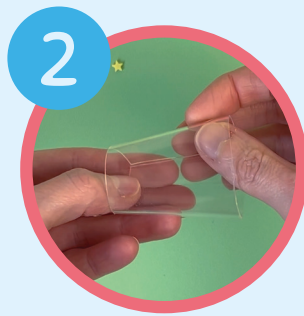
Nano magic doesn't last for ever. Have fun making lots of cute crafts and enjoy them while they last. Take lots of photos of your amazing creations to share with your friends. You could even try making your own tutorial videos. It's a viral trend, after all!

Remember, scissors are sharp! Always ask an adult to help you cut your tape. The nano magic might rub off on them, too!



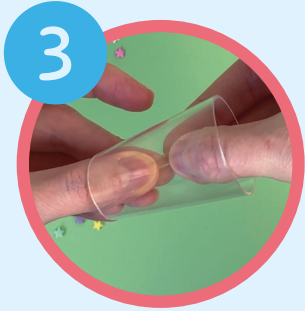
1

Cut a length of nano tape - around 14 cm is perfect - then trim each end at an angle.



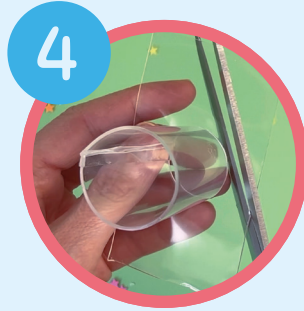
2

Wrap the nano tape into a cup shape with the sticky side facing inwards.



3

Cut a narrow strip of nano tape around 1 cm wide and press it along the inside join to make your cup secure.



4

Cut another length of tape and gently press the bottom of your cup onto the sticky side. Trim the edges into a circle to give your cup a base.



5

Carefully place some beads into the bottom of your cup, then top with slime and star sprinkles.



6

Take another length of tape and press the sticky side onto the top of your cup. Trim into a circle to give your cup a lid.



7

Carefully peel the film from the outside of your cup.



8

Use your felt-tip pen to draw a cute face. Add more features with extra shades, if you have them.



9

Peel the film from the top of your cup, then take the ear press-outs and stick them down.



10

Add the short length of straw to finish.

## EVEN MORE MAGIC...

Try different slime shades to make your own unique creations.  
You could even open a magic bubble tea café!

For more Nano Tape Magic, visit: <https://www.curiousuniverse.co.uk/pages/g3wu5gc>