

# METPURE®

JUST TWIST & PLUG  
NO TOOLS NEEDED!

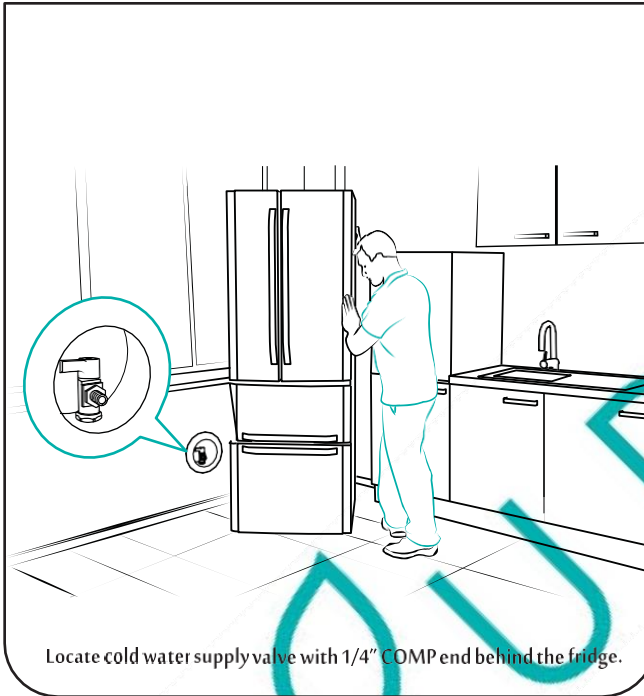


Metpure Ice Maker Fridge Installation Kit 3  
(short 6' connection from valve behind refrigerator)

SKU: PEX6FADP2D

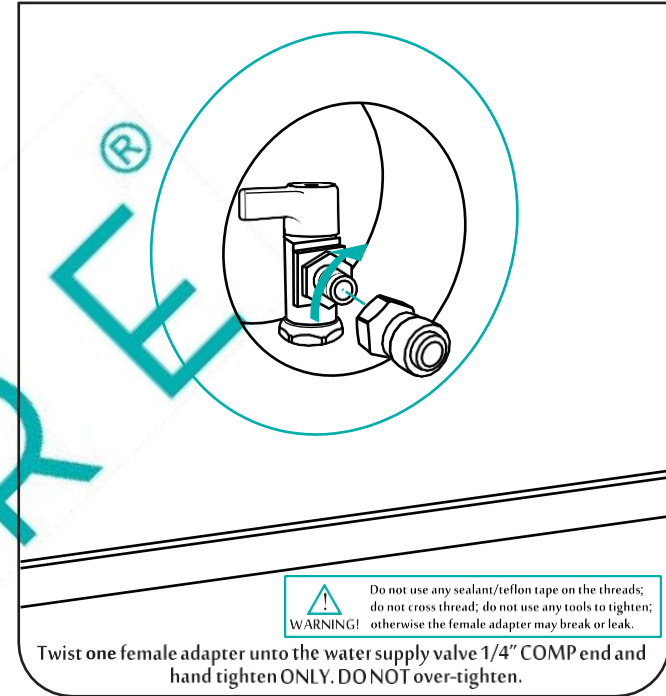
Installation Manual

## Step 1



Locate cold water supply valve with 1/4" COMP end behind the fridge.

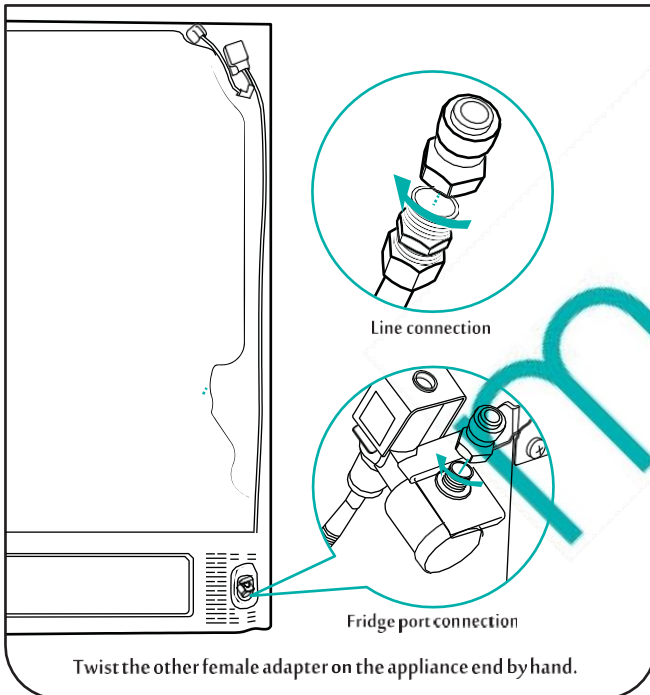
## Step 2



**WARNING!** Do not use any sealant/teflon tape on the threads; do not cross thread; do not use any tools to tighten; otherwise the female adapter may break or leak.

Twist one female adapter onto the water supply valve 1/4" COMP end and hand tighten ONLY. DO NOT over-tighten.

## Step 3

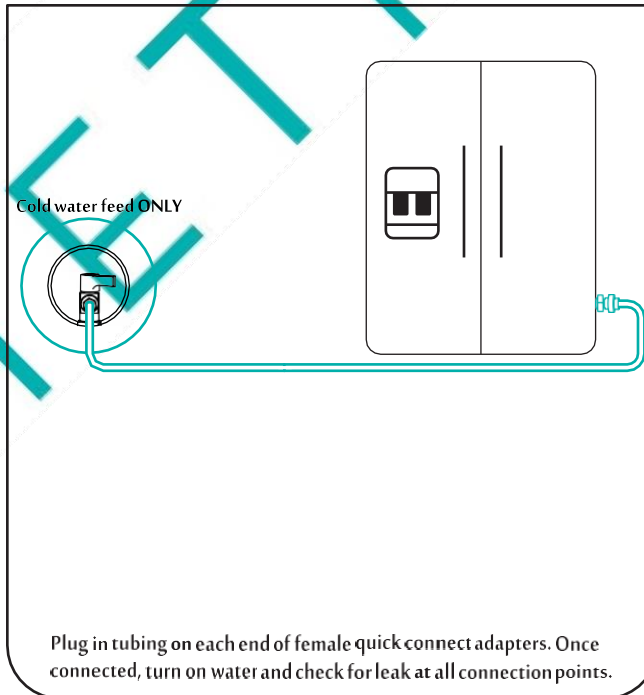


Line connection

Fridge port connection

Twist the other female adapter on the appliance end by hand.

## Step 4



Cold water feed ONLY

Plug in tubing on each end of female quick connect adapters. Once connected, turn on water and check for leak at all connection points.

### INCLUDED PARTS

1. QTY (1 roll): 6' x 1/4" OD PEX tubing
2. QTY (2): 1/4" female quick connect adapters

### FAQ

1. Will this fit my appliance?  
This kit will fit all appliances in 1/4" COMP fitting. If do not have 1/4" COMP fitting, a conversion adapter is needed (purchase separately).
2. This kit has so few parts, would this hold up/leak?  
Many similar kits in the market come with a set of sleeve, insert, and nut. Although they work, they are very confusing to put together and require a wrench to tighten, and if done incorrectly, leaks may occur. This kit is super easy to install, and NO TOOLS REQUIRED.
3. What is this kit for?  
This kit is for hooking up an appliance in a short distance, typically from a provided valve next to the appliance.
4. The tubing is too short, what can I do?  
If the tubing is too short, extend with more tubing using the same 1/4" size and connect with a 1/4" quick connect coupling (all purchase separately).

### SPECIFICATIONS

Pressure vs temperature range -160psi @ 73°F - 100psi @ 180°F  
Connection size - 1/4" OD  
Certification: NSF and UPC  
Country of origin: Made In USA

### CUSTOMER SUPPORT

Online: <https://www.metpure.com/contact/>  
Email: [support@metpure.com](mailto:support@metpure.com)  
Phone: 714-202-0019 M-F 9:30am-5:00pm PST  
Warranty info: <https://www.metpure.com/general-warranty-policy>