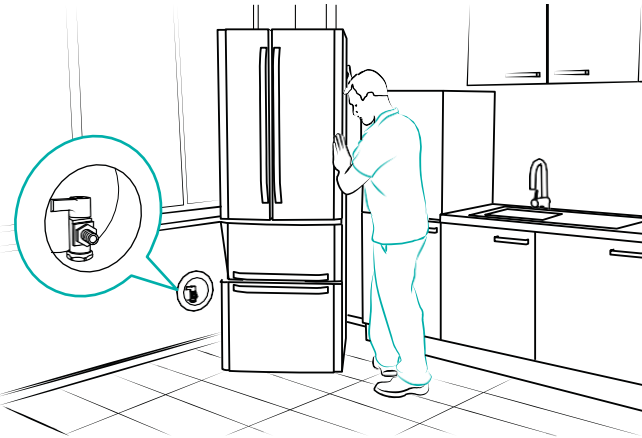


## Step 1

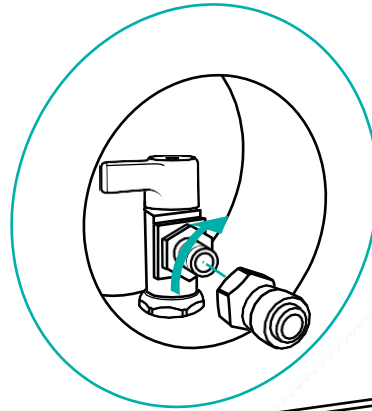
### Tools Required:

1. Pair of sharp scissors or sharp razorblade
2. Phillips-head screwdriver
3. Bucket or liquid container



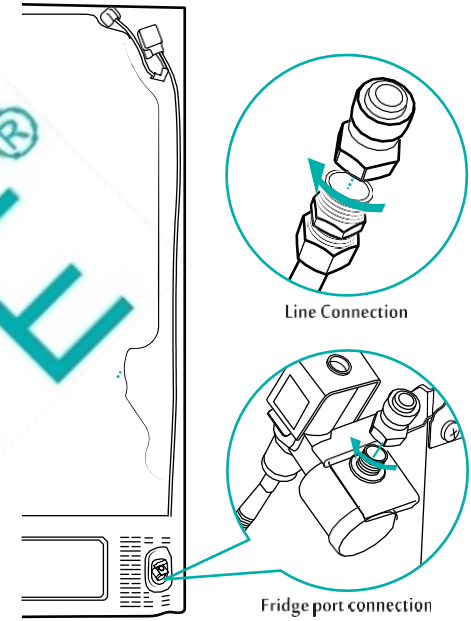
Locate cold water supply valve with 1/4" COMP end, either behind the fridge or inside a sink cabinet. Make sure the water supply valve is in the OFF position before installation.

## Step 2



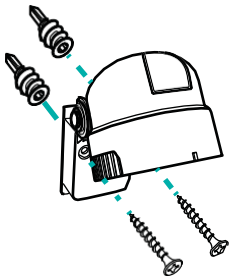
Thread one female adapter onto the water supply valve 1/4" COMP end and hand tighten ONLY. DO NOT cross-thread, otherwise leak will occur.

## Step 3



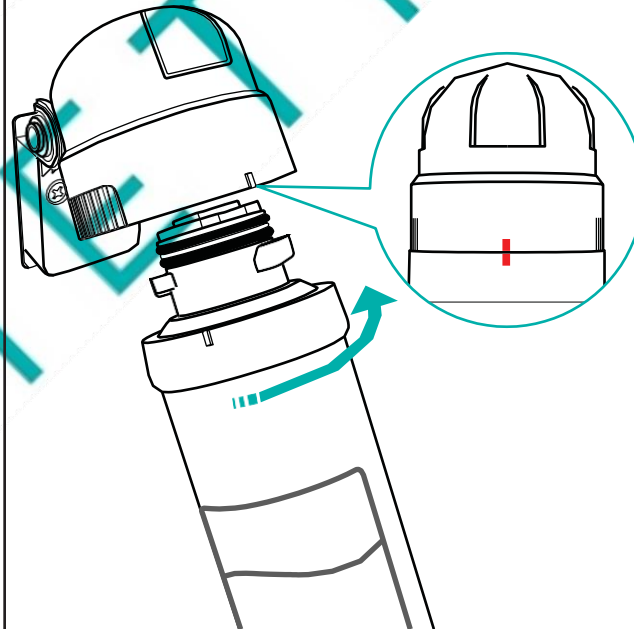
Thread the other female adapter on the appliance end.

## Step 4



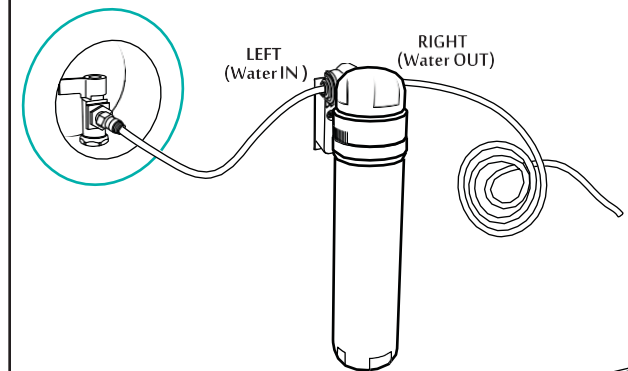
Mount the filter CAM vertically with included drywall anchors and screws.

## Step 5



Twist and secure the filter cartridge into the CAM with tabs aligned.

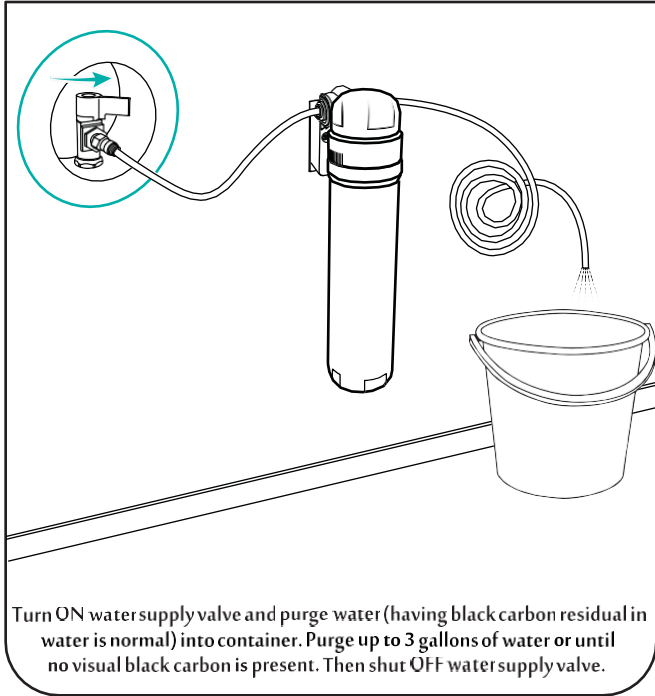
## Step 6



To prevent leak, tubing must be cut with sharp blade in a true straight cut leaving no frays or burrs and the tubing must be inserted all the way into the fitting.

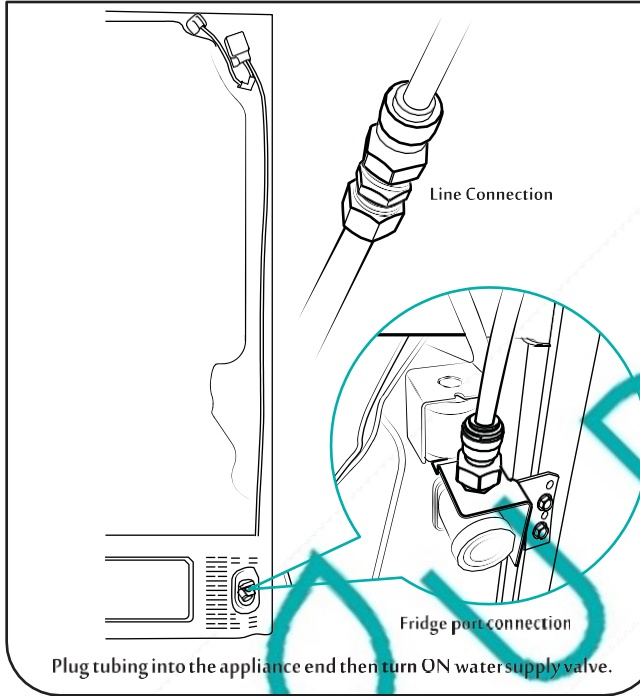
Cut a piece of tubing at required length and connect one end to the water supply valve and the other to the LEFT side of the CAM. Plug remainder of tubing into the RIGHT side of the CAM.

## Step 7



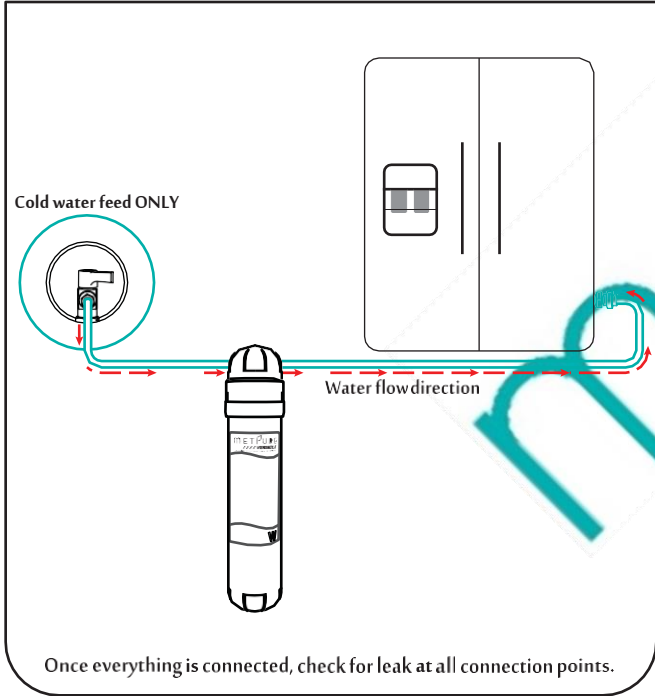
Turn ON water supply valve and purge water (having black carbon residual in water is normal) into container. Purge up to 3 gallons of water or until no visual black carbon is present. Then shut OFF water supply valve.

## Step 8



Plug tubing into the appliance end then turn ON water supply valve.

## Step 9



Cold water feed ONLY

Water flow direction

Once everything is connected, check for leak at all connection points.

### INCLUDED PARTS

1. QTY (1): Metpure Versatile CTO Cartridge (SKU MVCTO11- Color W)
2. QTY (1 set): Metpure Versatile cartridge attachment manifold (CAM) and filter clip mount
3. QTY (1roll): 10' of 1/4" white LLDPE tubing
4. Qty (2 sets): Mounting screw and drywall anchor
5. Qty (2): 1/4" female adapter with quick connect

### FAQ

1. Will this fit my appliance?  
This kit will fit all appliances in 1/4" COMP fitting. If do not have 1/4" COMP fitting, a conversion adapter is needed (purchase separately).
2. What does this filter do?  
It reduces chlorine, bad taste, and foul odor from water source, leaving you with refreshing, tasty water.
3. How often does the filter need to be changed?  
The filter has a life span up to 12 months or 1500 gallons, whichever comes first.
4. How do I change filter?  
There is no need to shut off water supply due to the patented CAM design. Match replacement filter with item MVCTO11 and install it by simply twist off the old one and replace with new.
5. How do I purge/flush the filter?  
Prepare a container and flush the outlet into a container up to 3 gallons of water or until carbon residual is entirely flushed out. All new filters need to be flushed.
6. The tubing is too short, what can I do?  
If the tubing is too short, extend with more tubing using the same 1/4" size and connect with a 1/4" quick connect coupling (all purchase separately).

### FILTER SPECIFICATION

Function - reduces chlorine, taste, and odor (CTO)  
 Filter media - 100% FDA grade virgin coconut granulated activated carbon  
 Product dimension - 12" Height x 2.5" Width x 4" Depth (30.5 cm x 5.1 cm x 10.2 cm)  
 Max flow rate - 0.8 Gal/min (3.0 L/min)  
 Performance pressure - 15 psi (min) - 80 psi (max)  
 Service life - 12 months/1500 U.S. gallons  
 Connection size - 1/4"

### CUSTOMER SUPPORT

Online: <https://www.metpure.com/contact/>  
 Email: [support@metpure.com](mailto:support@metpure.com)  
 Phone: 714-202-0019 M-F 9:30am-5:00pm PST  
 Warranty info: <https://www.metpure.com/general-warranty-policy>

# METPURE®

Scan here for installation video



[versatile.metpure.com/mvcto11-kit-install](https://www.metpure.com/mvcto11-kit-install)



Metpure CTO Inline Filter with Installation Kit  
 SKU: MVCTO11-KIT

Installation Manual