

OWNER'S MANUAL



YOLO *Electric*

TABLE OF CONTENTS

WELCOME TO THE YOLO® TRIBE _____	3
WHAT'S INCLUDED AND TOOLS NEEDED _____	4
ASSEMBLY INSTRUCTIONS YOLO® 30A E-CRUISER _____	5
SAFETY AND PRODUCT WARNING _____	12

OPERATING YOUR NEW YOLO® ELECTRIC BIKE:

BATTERY AND CHARGER _____	14
GEARS _____	16
BRAKES _____	17
TIRES _____	18
KICKSTAND AND KEYS _____	18
LCD DISPLAY PROGRAMMING AND USE _____	19
ADDITIONAL CARE AND MAINTENANCE _____	20
TROUBLESHOOTING _____	21
WARRANTY _____	22
SERIAL NUMBERS _____	24



WELCOME TO THE YOLO® TRIBE

With the purchase of this YOLO® 30A Electric Cruiser you are now part of the YOLO Tribe, a group of like-minded people who are inspired by our motto You Only Live Once.

For many of us growing up, riding a bike gave us our first taste of freedom. With just a few turns of the wheel, we could connect with friends and explore frontiers far beyond our own front yard. 30A Electric Cruisers by YOLO make you feel like that awestruck kid again, able to travel farther and faster than you ever imagined possible and reconnects you with the great outdoors. Our YOLO® Electric line of bikes are built with the highest standards of quality and YOLO's 30A Electric Cruiser is a next-level product that exemplifies our core values by promoting environmental responsibility and a healthy, happy lifestyle. It's 30A Cruising-Electrified!

For more than a decade our Tribe has grown to include team riders and ambassadors, independent retailers, the YOLO®/30A Bike Club, SUP events, yoga or kid's camps, or those who've joined us for uncommon travel experiences to the Florida Panhandle, Hawaii, Costa Rica or Nicaragua. Whether we've connected through our boards, paddles, beach cruisers, electric bikes, apparel or signature coffee, the common ground has become that shared understanding of the message that You Only Live Once. So no matter how you first found us, by land or sea or coffee tree, you are an important part of our YOLO Tribe and we're proud that your story includes us. As a part of the YOLO Tribe, you are now the best one to spread the vibe!

And above all else, with your new YOLO® 30A E-Cruiser...Enjoy Your Electrifying Ride!

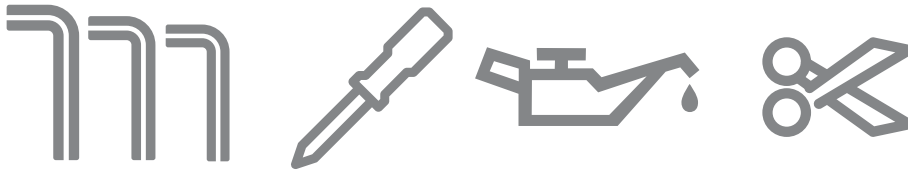


WHAT SHOULD BE INCLUDED IN THE BOX

If you find any of the following items are missing please contact us at 844.965.6262 or at www.yolobike.com

- Your New E-Cruiser with Tires On and Wired Handle Bar Assembly
- Two Ignition Keys (Cable Tied to Saddle Frame)
- Bundle of Two Pedals
- Small Box Containing a Battery Charger and One Black Cap

WHAT YOU WILL NEED FOR ASSEMBLY



- 6 mm hex 'L' wrench (about 4" tall)
- 5 mm hex key
- 4 mm hex key
- Philips screwdriver
- A small amount of lubricant such as lithium grease or Vaseline
- Standard Scissors



ASSEMBLY INSTRUCTIONS

Your bike has been largely pre-assembled and only requires a few additional assembly steps before you're ready to ride. In addition, its settings and functions have been tested prior to shipping from our manufacturing facility.

1. Open the bike box from the top.
2. Locate and set aside the battery charger box and the bundle of pedals (located on top of saddle frame or behind the bike seat).
3. Remove/pull/slide the new bike away through the top of the opened box and then stand the bike frame upright with the kickstand down.
4. Carefully remove all packaging materials from around the bike, except the whole handle bar stem (which is ok to leave it hanging by its cables), taking care to avoid scratching the frame with any sharp or metal tools. Please follow the guidelines below for correct assembly (Figure 1).



Figure 1

5. Lift the handlebar stem and remove the packing materials from the very bottom part of the handle bar stem only, or very bottom of the 'T' shape (not the upper portion).
6. Carefully remove by slowly peeling away the 'Warning' sticker only from the bottom stem (Figure 2). Make sure no debris or adhesive remains (Figure 3).



Figure 2



Figure 3



7. Adjust/rotate the handlebar so the brake and electrical cables will be positioned most naturally (no twisted or crossed cables). It is ok to leave long cables to freely go over above the front wheel. Then, insert the bottom handle bar stem all the way into the head of the front frame (Figure 4).

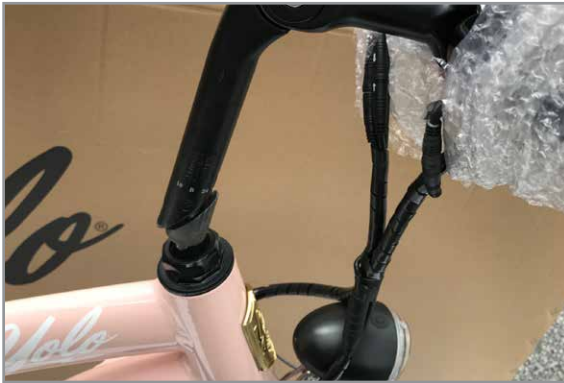


Figure 4

8. Remove the remaining packing materials from the upper part of the handle bar. Make sure the handlebars have already been fully wired in and around the frame. Remove the rubber plunger (Figure 5) from the stem by pulling and wiggling it upward with your fingers (Figure 6).



Figure 5



Figure 6

9. Use a 6 mm Hex 'L' wrench to insert and tighten the handlebar stem after aligning the handlebars so they are perpendicular to the front wheel (Figure 7).



Figure 7

10. Once the handlebar stem is tightened, put the rubber stem cover plunger back and again push and wiggle it all the way down.

11. The front wheel has a fixed alloy hub, which, once tightened, should rarely loosen. This allows for a smooth, stable ride. The front wheel comes pre-installed. The end bolts should be firmly tightened to ensure safety. Please check before each ride.



12. To position the LCD display, use both hands on each side of the LCD panel (Figure 8) and slowly tilt down the LCD display panel until it roughly faces slightly above your head when you are sitting on the bike seat. A final adjustment will be done later (Figure 9).



Figure 8



Figure 9

13. If the handlebar looks too high, then use a 4 mm hex key to loosen the handlebar (at 4 silver screws) and align it by centering and lowering the handlebar assembly until the handlebar grips are roughly lined up to just below your shoulder (or in whatever

position is most comfortable for your own riding posture). Then retighten the 4 screws taking care to minimize scratching any screws (Figure 10). Be sure that the gap on top of the handle bar mount is even with



Figure 10

the gap on the bottom before tightening all the way. When tightening the 4 small screws down to hold the handle bar in place, do so slowly and in an x shaped pattern so



Figure 11

all screws are tightened evenly. Using the x shaped tightening pattern also prevents the small screws from stripping.





Figure 12



Figure 13

14. Next loosen both the right and left brake levers by using a 4 mm hex key. Loosen two black screws on each brake (Figure 11). You will want to rotate and raise the brake levers from their original position) on the handlebars (Figure 12) upward until they are more level with the handlebar grips (Figure 13) and in a more comfortable position for gripping when your hands are on the handlebar grips. Then re-tighten the 2 screws on each brake with care to minimize scratching any screws. You will next need to loosen the gear shift display in the same manner using a 5 mm hex key, loosening one silver screw, located near the right brake. Adjust the gear shift display upward until you can see it easily from the seated position on the bike. When in place retighten the silver screw securely. During this process if you feel as though you have scratched the protective coating from the screws, you

can touch up any exposed areas with a thin dab of clear nail polish before exposing to humidity or rain for the first time.

15. Perform a final adjustment on the LCD display panel by slowly moving its position with two hands until you are comfortable viewing it while seated on the bike.

16. Next install the pedals. Place a small amount of lubricant such as lithium grease or Vaseline on the pedal threads before installing. PLEASE NOTE that the Left and Right pedals are identified with 3 linear marks stamped on the nut screw ends of the left pedal and no linear marks on the shaft of the right pedal (Figure 14). The right pedal screws in clockwise while the left pedal is a reverse thread and screws in counterclockwise. Hand-tighten or tighten with a 15 mm pedal spanner or 15mm wrench. Remember the Right Pedal Tightens Clockwise, and the Left Pedal Tightens Counter-Clockwise.



Figure 14



17. Look for the four connector cables right behind the LCD display panel. Use the arrow marked on each cable end to connect one to another, using one male-to-female connector at a time. If a proper connection is being made it should easily slide together. If it is only a slightly firm connection, do not force together by pushing further! This means the ends of the male-to-female connection doesn't match properly so you will need to separate and reinsert until it slides easily together. Then tightly connect the two cables (Figure 15). Also, perform another




Figure 15

“double-check” of one thick wire connector located between the pedals and the motor (below the chainstay frame) and make sure it is fully connected (Figure 16)



Figure 16


18. To check that the bike's electrical system is properly connected, turn on the back battery by pressing the red power button located under the battery on the bottom, right-side of the battery if you are standing behind the back tire. Press and hold the  (“Power”) button located on the control band on the left side of the handlebar until the LCD display powers on. If you see it briefly power up and then suddenly turn off, this means the battery power switch is off.

19. Press the left brake and see if the brake light goes on when depressed and off when released. Repeat that step for the right brake. If all works in this manner then the cables were properly connected.

20. Press and hold the “+” button on the control band until the LCD display panel becomes brighter (for night time rides only) and the bike's front head light and



rear brake lights turn on permanently. If this function works, then all cables were properly connected.

21. If you want to see the LCD display panel in English units (such as MPH and miles) instead of Metric units (KPH and kilometers), then press and hold both the “+” and “-” buttons of the control band until the LCD display panel changes to a metric unit display. Then press “+” button once to change the setting or units to English. Then press  button to scroll through all the settings until you see the LCD display panel return to its home display.

22. For proper gear adjustment the cable tension must be checked and fully secured to ensure there is no slack in the cable when it is in the highest or lowest gear. Failure to do this can result in poor gear changes.

23. The tension of cable can be adjusted on the rear of the cable insertion point on the back of the derailleur (Figure 17).



Figure 17

Apply lubricant to the chain and sprockets regularly. There are many choices on the market, including Teflon, wax, and ceramic-based lubes.

24. Proper tire inflation for your Duro street-tread fat tires is recommended at between 30 and 36 +/- PSI. You should monitor regularly to ensure best performance from each tire. Correct tire pressure is critical to the peak performance of the bike.

25. For connection of the battery to the bike please ensure that no other plug is ever connected to the main battery slot and that the e-cruiser battery is completely locked onto the bike frame when connected to the bike (Figure 18). Note: Its voltage output can be found on the back of the charger and it should be rated at 42 volts for 30A E-Cruiser.

You're almost finished with the assembly, just a few more items.



Figure 18



26. On the down tube of the bike frame there are two screws installed in the frame to use when adding a bottle holder or other accessory to the bike. Using 4 mm hex key tighten these screws all the way so they are no longer loose. (Figure 19).

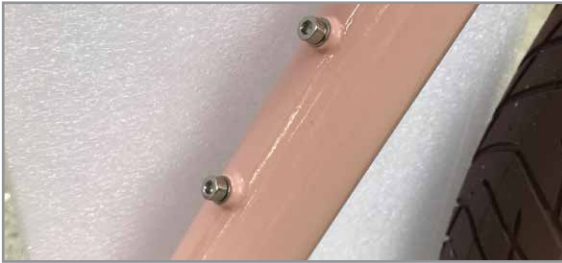


Figure 19

27. There is an extra black, plastic bolt cover in the charger box. Install that over the exposed bolt on the exterior left rear wheel axle (Figure 20). The one on the right side comes pre-installed (if it falls off during shipping, please reinsert back into place).



Figure 20

28. Prior to adjusting seat height, remove seat post and put grease/lubricant evenly around the bottom 2 inches of the seat post to prevent the seat post from seizing its position. Adjust the seat height by releasing the quick release clip on the seat post to loosen the seat post so it can be raised or lowered (Figure 21). When

the seat is at the desired height close quick release clip completely to tighten. If the seat post is slipping when the quick release clip is closed all the way, take a 5 mm hex wrench and tighten the nut on the opposite side of the quick release clip. Do this until the seat post no longer slips.



Figure 21

29. To adjust the seat saddle and move it further to the front or back by loosening the silver screw located right below the seat using the 6 mm Hex 'L' wrench (Figure 22). Make sure the screw is tightened securely once the seat is in its desired position.



Figure 22

30. The headlight position can be tightened using a Philips screwdriver. Recheck all assembly points to ensure a secure column.

That concludes the standard assembly of the YOLO® E-Cruiser. We recommend giving every component a thorough check before riding.



SAFETY AND PRODUCT WARNINGS

HELMET AND FOOTWEAR:

ALWAYS wear protective gear including an approved helmet. Follow each helmet manufacturer's instructions for fit and proper use of your helmet. Also use secure and proper footwear for operating a bike. Riding barefoot is NOT recommended.

MECHANICAL SAFETY CHECK:

Inspect your bike regularly before riding. Make sure no hardware or connections are loose. Keeping your bike well-maintained keeps your bike safer to ride and reduces chance of injury. You should take your bike to be checked and serviced by a qualified bike mechanic before your first 100 miles of riding. This is a best practice for any new bike because cables will stretch and components settle.

1. Check the grips.
2. Check the tire pressure.
3. Check brake pads for wear and replace when necessary.
4. Check brakes for alignment of front pads and proper operation.
5. Inspect the chain and cassette sprockets thoroughly.
6. Check the front wheel to make sure it is secure.
7. Check all the wire connections to make sure they are secure.
8. Check the gear function.
9. Check pedal tightness on crank and tightness of crank. (left and right sides)
10. Check the power indicator on the battery.
11. Check battery status via Charge light (Green LED) on charger and on bike.
12. Check the height and tightness of the saddle.
13. Check to make sure the battery and plug cover are completely closed.
14. Check to make sure the battery is completely locked onto the bike frame.



SAFETY AND PRODUCT WARNINGS

YOUR MAIDEN VOYAGE:

Before your first ride it's important to familiarize yourself with the operation of the bike. Start in a low traffic area while you get used to operating the controls and the power of the bike, particularly the LCD display panel and the brake system. The rear brake should always be applied before but in conjunction with the front brake.

ADDITIONAL PASSENGERS:

The YOLO 30A[®] E-Cruiser is designed for one passenger. DO NOT carry any additional passengers on the frame, handlebars or front or rear racks that may be installed.

WEIGHT CAPACITY:

The YOLO 30A[®] E-Cruiser is designed to carry a maximum weight of approximately 275 lbs. Exceeding the maximum weight can result in damage to the bike or injury.

WARNING...UNDERSTAND THE RISKS AND USE EXTRA CAUTION:

Electric bikes are motorized (even those without a throttle) and reach higher speeds than traditional bikes. Therefore, the risks and dangers of operating an electric bike may exceed those of operating a traditional bike. The user assumes all risk of personal injury, injury to others, operational failure of the bicycle or its systems, and all other losses or damages to themselves and others and to any property resulting from the use of the electric bicycle. Your insurance policies may not provide coverage for accidents involving the use of an electric bicycle. To determine if you are covered, you should contact your insurance agent or provider.

Before riding you should review, understand, and ALWAYS follow all local, state and federal guidelines, road rules and laws surrounding use of electric bikes. Laws require use of a helmet and, in many states, a minimum age for riders.



BATTERY CHARGER

Included with your YOLO® 30A E-Cruiser is a lithium ion battery and a 42 volt output charger that plugs into a standard household electrical outlet (115-120V). The bike also arrives with the battery fully charged.

Carefully follow the charging instructions provided in the charger box. Lithium ion batteries require specially designed chargers (Figure 1) so you should never charge your battery with any substitute charger. Using a charger not made for this battery is very dangerous and could result in over-heating, fire or explosion.

The battery may be charged either while mounted within your bike rack frame or when removed from the frame. For added security the battery is locked in position by a key (Figure 2). To remove the battery, insert and turn the key counter-clockwise to unlock, and then gently pull the battery out of the rear of the rack system.



Figure 1



Figure 2

DO NOT USE THE YOLO BOLT CHARGER WITH THE YOLO E-CRUISER AND VICE VERSA. EACH MODEL HAS ITS OWN CHARGER WITH SPECS UNIQUE TO THE MODEL.



BATTERY CHARGER

After unlocking the battery assembly with the battery key, the battery slides out horizontally (Figure 1). After charging, replace the battery by sliding back into place through the rear rack system. Firmly reconnect to the frame before locking in position with the key. After use always charge your battery fully for best performance. There is no memory effect so you can charge the battery after short rides without damage.



Figure 1

The charger will recharge a fully depleted battery in 4-6 hours. The LED will turn red when charging then green when fully charged. It is recommended to always unplug the charger once complete.

Check to make sure unit is charged in a 115-120v outlet. Take care not to drop the charger as it has sensitive electronics inside and damage may result. Do not cover with any material or substance that may restrict airflow into the charger. The charger needs to be able to “breathe” and be kept cool so avoid subjecting the battery to high temperatures, such as direct sunlight, for extended periods of time. Do not submerge the battery in water while on or off the bike or while riding.

Remember that charging the bike each time you use it will ensure longer life of the battery. DO NOT leave the battery discharged for long periods. This will damage the lifespan of the battery. Never open the charger or change the settings on charger.



GEARS

The YOLO® 30A E-Cruiser is equipped with 9 speeds. The more gears the lesser the jump between gears and the more seamless the shifting. The first gear is for easier, uphill pedaling and the last gear is for maximum speed and traction on level and downhill terrain. You should only change gears in either direction when you are pedaling. The gear shifter located on the right handlebar has two levers, the front for decreasing gear numbers and the rear for increasing the gear number. The rear wheel contains 9 sprockets. When the chain is around the smallest sprocket you are in 9th speed, the highest gear, and when the chain is around the largest sprocket you are in 1st speed, the lowest gear (Figure 1). Every shift on the gear selector should cause a gear change (Figure 2).



Figure 1



Figure 2



BRAKES

Your YOLO® 30A E-Cruiser is equipped with hydraulic front and rear disc brakes which provide stronger braking power and more proportional brake distribution for maximum reliability, but also the extra safety advantage of a power cut-off that immediately cuts power to the motor before the brakes engage. It gives riders the ability to control the bike's exceptional power in order to make a sudden stop to avoid a hazard ahead.

The more hand pressure applied to the brake levers, the faster the YOLO® 30A E-Cruiser will come to a stop. The rear brake should always be applied before and in conjunction with the front brake. Applying the front brake to slow down or stop the bike when at high speeds could result in the rider being jolted or ejected over the handlebars. It's best to apply even pressure to both brake levers when slowing or stopping to prevent uneven brake wear in the future.

Bicycles equipped with disc brakes may temporarily or periodically make a slight scraping noise when the wheels are turning without the brakes being applied. This is normal.

PLEASE NOTE that the rotors on disc brakes can become hot during use. Do not touch or contact the disc rotor shortly after use. Also, damp or wet conditions can require a longer distance, than normal, to stop. Make sure to brake earlier in order to avoid sudden stops or sliding when riding in wet conditions.

Make sure the brake lever does not contact the handle bar when full hand pressure is applied (Figure 1). If it does, then an adjustment needs to be made to increase cable tension.

An easy adjustment can be made to the brake levers by screwing or unscrewing the threaded barrel adjuster on the brake lever until cable tension is increased for safe stopping (Figure 2).

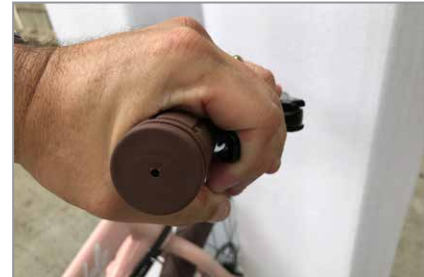


Figure 1



Figure 2



TIRES

The YOLO® 30A E-Cruiser is equipped with high-quality, 26 x 3.0” street-tread fat tires. The oversized width of the tire, combined with the smoother tread, allows for the smoothest ride with minimal rolling resistance, while still allowing for traction and grip on wet or sandy roads.

Proper tire inflation is very important to the performance of the bike. You should check tire inflation levels prior to every ride. Proper inflation of these tires is recommended between 30 and 36 +/- PSI.

KICKSTAND, RACK SYSTEM AND KEYS

The YOLO® 30A E-Cruiser is equipped with a heavy duty, double-legged aluminum alloy kickstand. The kickstand is designed to hold an unmounted bike in the upright position.

You should not sit on your bike with the kickstand in the down position.

The YOLO® 30A E-Cruiser is also equipped with a custom designed back rack system that both houses the battery and can be used for transporting light cargo. The rack includes custom logoed Bamboo panels. Bamboo is a durable and weather-resistant natural material.

Your bike comes with two keys that can be used to lock the battery in place. Always make sure the key is in the “open” position when removing the battery and in the “locked” position when riding the bike. It is also recommended to always remove the battery from the frame when transporting the bike on a bike rack.



LCD DISPLAY/CONTROLLER PROGRAMMING AND USE:

Your waterproof 3" LCD display allows you to monitor and control your pedal-assist bike (Figure 1).

BASIC OPERATION

Power on and off by holding down the power button located on the control band near the left hand grip along with the controls to increase (+) or decrease (-) the Power Assist (PAS) level (Figure 2). The LCD display screen is centered on the handlebars. The PAS level is indicated on the screen, middle left. There are 6 manual levels you may select at any time during powered operation, by pressing the + or - button. Zero (0) is natural pedaling with no assist from the motor. Your Battery Life indicator is displayed by five lateral bars located above the power assist level. Your Battery Life indicator is displayed by five lateral bars located above the power assist level.



Figure 1





Figure 2

Located next to the LCD display control band is the throttle lever. With the power on, your bike will move by either pedaling (with or without motor assistance based on assist level programmed) or by depressing the throttle lever. When riding at any PAS level 1 through 5, when your left thumb presses down on the throttle lever (Figure 3) the throttle will engage the motor and propel the bike automatically until the throttle is released.



Figure 3

MANUAL ADJUSTMENTS

By depressing and holding both the "+" and "-" buttons, you access separate adjustments including Brightness Level, English/Metric units, MPH/KPH, and time of day. By depressing the  button, you may scroll through options and use the + or - buttons to select. Keep pressing  until the LCD display panel comes back to home display screen. NOTE: Manual overrides via the LCD display reset each time the display is cycled off/on.

After 5 minutes of inactivity the LCD Meter will automatically turn off to conserve power.



ADDITIONAL CARE AND MAINTENANCE:

You should minimize parking your YOLO® 30A E-Cruiser outdoors in rain or wet conditions and allow ample time for the systems to dry out if they become wet.

Much like a regular bike, use in wet conditions mandates a more regular maintenance schedule to ensure your bike does not rust or corrode, and to ensure all systems are always working safely. This electric bicycle is not meant for use in puddles, heavy rain, and streams. Never immerse this product in water as the electrical system may be damaged.

Riding on the beach or in coastal areas exposes your bicycle to saltwater which is very corrosive. Wash your bicycle frequently and wipe or spray all unpainted parts with anti-rust treatment. Damage from corrosion is not covered under warranty so special care should be given to extend the life of your bike when used in coastal areas or areas with salty air or water.

To clean, wipe the bike with a dry cloth, or use a non-abrasive detergent and quickly dry any water after cleaning. Apply regular lubrication to metal parts, including the chain, but DO NOT USE on the front brake, rear wheel or front wheel. Increase the frequency of lubricating oil when used in wet and humid areas.

Wipe the plastic and paint-coated parts with a dry cloth to remove excess dirt or debris after riding.

If the paint has become scratched or chipped in the metal, use touch-up paint to prevent rust. Clear nail polish can also be used to seal scratches or chips.

Additional resources for assembly, LCD screen operation and this owner's manual are available and can be viewed at www.yolobike.com.



SIMPLE TROUBLESHOOTING:

PROBLEM	CHECK	ACTION
Low Speed	Battery Power	Charging
	Tire Pressure	Inflate the Tire
	Is Tire Flat?	Repair the Tire
	Load	Do not Overload
The motor isn't working	Each Plug	Ensure every plug is securely connected. If the situation does not improve, please contact the dealer.
Power indicator light does not shine, or power indication of battery is on, but the bike doesn't work.	Loose wiring or connection	Check wiring and connections, particularly brake connections. If the situation does not improve, please contact the dealer.
	To determine whether the battery needs to be replaced	At mild temperatures (70-80 degrees), fully charge the battery. If abnormally abrupt depletion of the battery occurs on successive occasions, consider replacement of your battery if the charger, all connections, and electrical sources are in working order.
LCD Controller Panel unexpectedly powers off	All connection points and wipe free of any debris.	If during normal operation powers off and won't boot up properly after repeated attempts, despite ample battery life, then remove battery completely. Check connection points and wipe clean of debris, reattach battery and then power up LCD panel.



YOLO® ELECTRIC WARRANTY

Every YOLO® Electric bike is covered under our manufacturer's one-year, comprehensive warranty against all manufacturing defects. The warranty extends to the original owner of the bike. Upon purchase of bike, owner must register their bike with serial # on the YOLO® Bike website.

WHAT'S COVERED?

All YOLO® Electric bicycle components are warranted to be free from manufacturer defects in materials and/or workmanship for a 1-year period from the date of original purchase. Damage from corrosion and normal wear and tear are not covered under warranty. Normal wear and tear parts include tires, tubes, brake pads, cables and housings, grips and the saddle.

All YOLO® Electric bicycle lithium ion batteries are warranted to be free from manufacturing defects in materials and/or workmanship for a 1-year period from the date of original purchase. The battery warranty does not include damage from power surges, use of improper charger, improper maintenance or other such misuse, normal external wear and tear or water damage.

WHAT WE CAN DO...

If a component is deemed to be defective or damaged in shipping YOLO® Bike Co. will issue a replacement part. We will assist you in replacing any defective part or parts damaged during shipping. If the product cannot be repaired after reasonable attempt (at the discretion of YOLO® Bike Co.), we will work with every customer to provide a satisfactory resolution or replacement.

WHAT WE CAN'T DO...

YOLO® Bike Co. can't replace any parts without first seeing photos or video of the defective or damaged part and knowing how it was damaged. We only offer warranty coverage to original owners. We cannot replace any parts damaged by the user under warranty coverage and we cannot pay for any third-party service or part replacements unless previously agreed upon in writing with the customer. We cannot cover any damage that may occur during shipping if the owner sets up their own shipping option or if the bike is shipped using a freight forwarder or similar service not controlled by YOLO® Bike Co./YOLO® Board.



YOLO® ELECTRIC WARRANTY

WARRANTY TERMS...

This warranty applies to the original owner of a YOLO® Electric bicycle. This warranty is expressly limited to the replacement of defective parts at the sole discretion of YOLO® Bike Co.. This warranty does not cover any damage resulting from failure to follow instructions in the owner's manual, acts of God, accident, misuse, neglect, abuse, commercial use, alterations, modification, improper assembly, normal wear and tear, installation of parts or accessories not originally intended or compatible with the bicycle, operator error, water damage, extreme riding, stunt riding, or improper maintenance. Bikes will only be replaced if deemed defective and not repairable. In these cases, the original bike may have to be shipped to YOLO® Bike Co. for inspection of bike for replacement or repair of bike, before a new bike can be sent out. YOLO® Electric/YOLO® Bike Co. will not be liable and/or responsible for any damage, failure or loss caused by any unauthorized service or use of unauthorized parts. Shipping damage must be reported to YOLO Bike Co. immediately upon arrival of damaged shipment. In no event shall YOLO® Board/YOLO® Bike Co./YOLO® Electric be responsible for any direct, indirect or consequential damages, including without limitation, damages for personal injury, property damage, or economic losses, whether based on contract, warranty, negligence, or product liability in connection with their products.

WHO DO I CONTACT IF I HAVE A WARRANTY CLAIM?

Proof of purchase may be required with any warranty request. With any warranty claim, contact us at support@yolobike.com. If there's a simple fix for your problem we'll try to get your problem identified and resolved as quickly as possible. Valid warranty claims will be processed as quickly as possible as well.

SHIPPING DAMAGE CLAIMS

It's essential that you IMMEDIATELY inspect your product(s) for any visible damage before receiving your shipment. You must note any damage to your products before you and the delivery driver sign off on the shipment. Refuse delivery if the box is damaged and/or torn and you open it and find damage inside (note: you can return later for replacement but would have to pay return shipping). Freight damage claims are very time sensitive. You'll need to take pictures of any damage that is found and keep all packaging and paperwork until the inspection process is complete. If you experience any damage related to shipping please contact us right away at support@yolobike.com.



REGISTER

There are serial numbers on the YOLO® 30A e-cruiser in two locations. On the frame, there is an engraved serial number on the underside of the bottom bracket, and on the rear hub motor casing there is a unique serial number (Figure 1).

Example: xx-123456789xx-xx



Figure 1

TO VALIDATE THE WARRANTY, YOU MUST REGISTER YOUR NEW YOLO® 30A E-CRUISER WITHIN 30 DAYS OF PURCHASE AT WWW.YOLOBIKE.COM



**THANK YOU FOR YOUR PURCHASE
AND WELCOME TO THE TRIBE!**



COMMENTS/QUESTIONS? VISIT YOLOBIKE.COM