

PROTECT

Plants & Well-being



URINARY

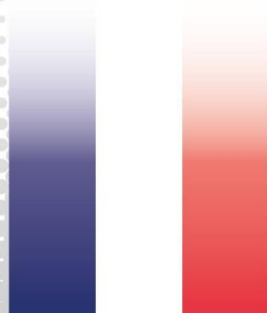
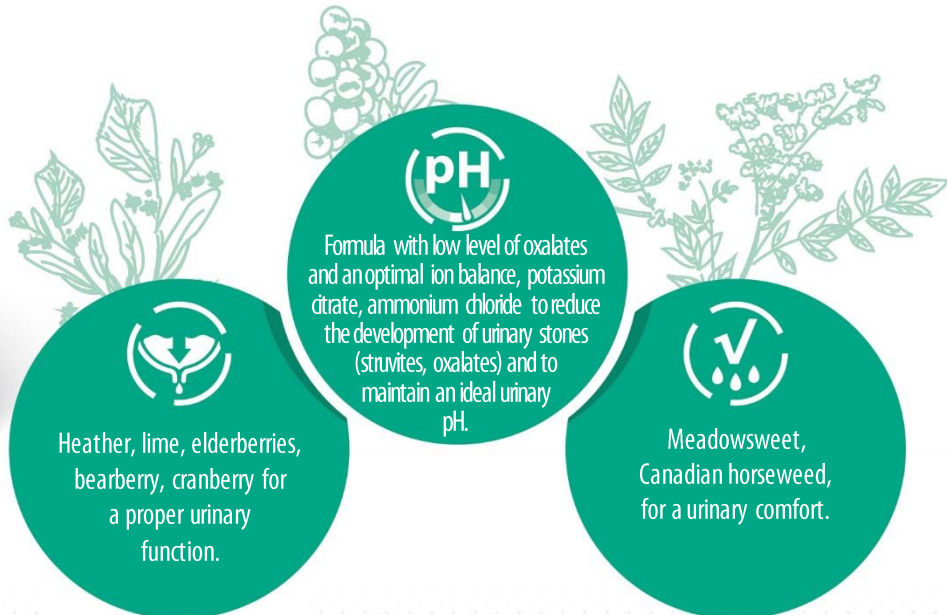
Prevents oxalate calcium stones • Urinary comfort

PLANT ACTIVE BENEFIT

Complete dietetic food for dogs with particular nutritional needs
"Reduction of oxalate stones formation".
"Reduction of struvite stone recurrence".



Bags of 2 kg & 12 kg



Made in France



URINARY

Prevents oxalate calcium stones • Urinary comfort

PLANT ACTIVE BENEFIT



INGREDIENTS

Dehydrated animal proteins (17% min.) (chicken, duck, turkey, pork). Rice. Duck fat. Peas. Potato starch. Corn gluten. Corn. Dehulled oats. Apple fibres. Egg. Animal protein hydrolysates. Linseed. Broad bean fibres. Sea salt. Fish oil. Fish autolysates (1%). Brewer's yeast. Clay. Potassium citrate. Ammonium chloride. Methionine. Dicalcium phosphate. Fructo-oligosaccharides. Potassium chloride. Heather. Lime. Canadian horseweed. Meadowsweet. Elderberries. Bearberry. Calcium sulphate. Cranberry. Rosemary extracts. Vitamins and trace elements.

Urine alkalisng substances: potassium citrate (0.5%). Urine acidifying substances: ammonium chloride. Low level of calcium oxalate.

CONTENT BY VOLUME

Crude protein 27 %. Crude fat 16 %. Crude fibre 3 %. Inorganic matter 7.5 %. Metabolisable energy 3,787 kcal/kg. Calcium 0.85 %. Phosphorus 0.7 %. Sodium 0.75 %. Potassium 1.1 %. Magnesium 0.08 %. Linoleic acid 22.1 g/kg. Alpha-linolenic acid 6.2 g/kg. EPA + DHA 2.7 g/kg. Lysine 10.9 g/kg. Methionine 8.8 g/kg. Copper 19 mg/kg. Zinc 195 mg/kg (including chelated zinc 72 mg/kg). Manganese 63 mg/kg. Iodine 2.8 mg/kg. Selenium 0.5 mg/kg (of which Organic selenium 0.15 mg/kg). Vitamin A 12,000 UI. Vitamin D3 785 UI. Vitamin E 300 UI. Vitamin B1 74 mg/kg. Vitamin B2 9 mg/kg. Pantothenic acid 37 mg/kg. Vitamin B6 8.4 mg/kg. Vitamin B12 0.2 mg/kg. Vitamin PP 28 mg/kg. Biotin 2.1 mg/kg. Folic acid 1.9 mg/kg. Choline chloride 1,725 mg/kg.

INSTRUCTIONS

Serve the food gradually during the transition from the pet's previous food, straight from the bag or rehydrated according to the rationing table printed on the bag. Daily amounts need to be adjusted according to the animal's breed, weight and activity. Drinking water should be available at all times. It is recommended that advice from a veterinarian be sought before use and before extending the period of use.

Recommended length of time: Initially up to 6 months.

Optimal weight of dog		2 kg	5 kg	10 kg	15 kg	20 kg	25 kg	30 kg	40 kg	50 kg	60 kg	70 kg	80 kg
Normal activity	Daily quantity	47 g	94 g	159 g	215 g	267 g	315 g	361 g	449 g	530 g	608 g	682 g	754 g
	Average duration in days - 2kg bags	43	21	13	9	7	6	6	4	4	3	3	3
	Average duration in days - 12kg bags	255	128	75	56	45	38	33	27	23	20	18	16
Moderate activity	Daily quantity	43 g	86 g	144 g	195 g	242 g	287 g	329 g	408 g	482 g	553 g	620 g	686 g
	Average duration in days - 2kg bags	47	23	14	10	8	7	6	5	4	4	3	3
	Average duration in days - 12kg bags	279	140	83	62	50	42	36	29	25	22	19	17
Sterilized	Daily quantity	41 g	81 g	137 g	176 g	207 g	245 g	281 g	387 g	458 g	525 g	589 g	651 g
	Average duration in days - 2kg bags	49	25	15	11	10	8	7	5	4	4	3	3
	Average duration in days - 12kg bags	293	148	88	68	58	49	43	31	26	23	20	18

Storage precautions: to preserve the food's qualities, store in a cool, dark and dry place.



Pont-Réan BP38001 • 35580 Guichen, FRANCE

www.pro-nutrition.flatazor.com

pro-nutrition.flatazor@sopral.com

