

PRO-NUTRITION®
FLATAZOR

PROTECT

Plants & Well-being



OBESITE

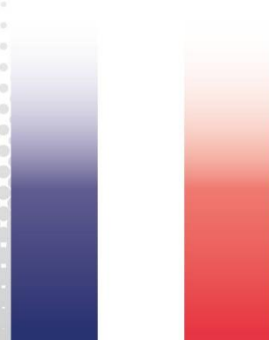
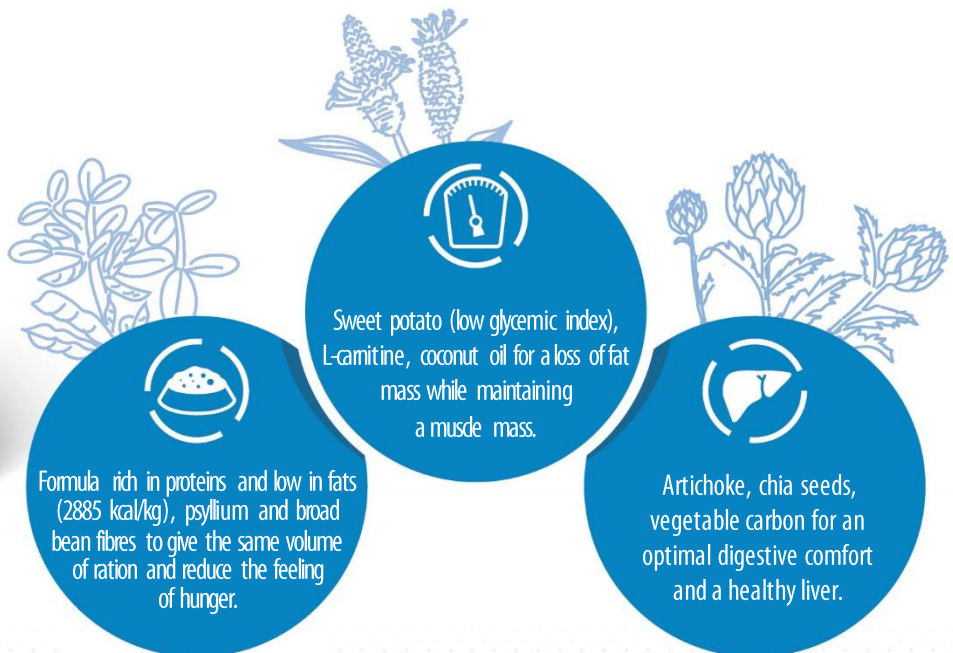
Low calorie • Satiety satisfaction

PLANT ACTIVE BENEFIT

Complete dietetic food for dogs with particular nutritional needs
"Reduction of excessive body weight".
"Regulation of glucose supply (*Diabetes mellitus*)".



Bags of 2 kg & 12 kg



Made in France



OBESITE

Low calorie • Satiety satisfaction

PLANT ACTIVE BENEFIT



INGREDIENTS

Dehydrated animal proteins (29% min.) (chicken, duck, turkey). Broad bean fibres. Corn. Tapioca. Sweet potato. Apple fibres. Peas. Corn gluten. Animal protein hydrolysates. Duck fat. Beet pulps. Linseed. Brewer's yeast. Fish autolysates (1%). Clay. Chia seeds. Psyllium fibres. Artichoke. Fructo-oligosaccharides. Coconut oil. Fish oil. Vegetable carbon. Sea salt. Rosemary extracts. L-carnitine. Vitamins and trace elements.

Carbohydrate sources: corn, tapioca, sweet potato, peas. Sources of omega 3: linseed, fish oil, chia seeds. Low level of mono- and disaccharides.

CONTENT BY VOLUME

Crude protein 29 %. Crude fat 9 %. Crude fibre 12 %. Inorganic matter 6.5 %. Metabolisable energy 2,885 kcal/kg. Calcium 1.2 %. Phosphorus 0.9 %. Sodium 0.25 %. Potassium 0.7 %. Magnesium 0.12 %. Linoleic acid 12.3 g/kg. Alpha-linolenic acid 4.2 g/kg. EPA + DHA 1.5 g/kg. Lysine 19.4 g/kg. Methionine 4.2 g/kg. L-carnitine 50 mg/kg. Copper 22 mg/kg. Zinc 200 mg/kg (including chelated zinc 72 mg/kg). Manganese 73 mg/kg. Iodine 2.8 mg/kg. Selenium 0.5 mg/kg (of which Organic selenium 0.08 mg/kg). Vitamin A 13,600 UI. Vitamin D3 900 UI. Vitamin E 250 UI. Vitamin B1 84 mg/kg. Vitamin B2 10.4 mg/kg. Pantothenic acid 42 mg/kg. Vitamin B6 9.6 mg/kg. Vitamin B12 0.22 mg/kg. Vitamin PP 32 mg/kg. Biotin 2.4 mg/kg. Folic acid 2.2 mg/kg. Choline chloride 1,725 mg/kg.

INSTRUCTIONS

Serve the food gradually during the transition from the pet's previous food, straight from the bag or rehydrated according to the rationing table printed on the bag. Daily amounts need to be adjusted according to the animal's breed, weight and activity. Drinking water should be available at all times. It is recommended that a veterinarian's opinion be sought before use or before extending the period of use.

Recommended length of time (in the case of excessive body weight): Until target body weight is achieved and after if required to maintain target bodyweight.

Recommended length of time (in the case of *Diabetes mellitus*): Initially up to 6 months.

Optimal weight of dog		2 kg	5 kg	10 kg	15 kg	20 kg	25 kg	30 kg	40 kg	50 kg	60 kg	70 kg	80 kg
Overweight ≥ 20 %	Daily quantity	51 g	101 g	170 g	230 g	271 g	320 g	367 g	455 g	538 g	617 g	692 g	765 g
	Average duration in days -2 kg bags	39	20	12	9	7	6	5	4	4	3	3	3
	Average duration in days -12 kg bags	235	119	71	52	44	38	33	26	22	19	17	16
Overweight < 20 %	Daily quantity	48 g	95 g	160 g	216 g	253 g	300 g	344 g	426 g	504 g	578 g	649 g	717 g
	Average duration in days -2 kg bags	42	21	13	9	8	7	6	5	4	3	3	3
	Average duration in days -12 kg bags	250	126	75	56	47	40	35	28	24	21	18	17
Weight maintenance	Daily quantity	50 g	99 g	167 g	226 g	265 g	314 g	360 g	446 g	528 g	605 g	679 g	751 g
	Average duration in days -2 kg bags	40	20	12	9	8	6	6	4	4	3	3	3
	Average duration in days -12 kg bags	240	121	72	53	45	38	33	27	23	20	18	16

Storage precautions: to preserve the food's qualities, store in a cool, dark and dry place.



Pont-Réan BP38001 • 35580 Guichen, FRANCE

www.pro-nutrition.flatazor.com

pro-nutrition.flatazor@sopral.com

