

PROTECT

Plants & Well-being



OBESITE

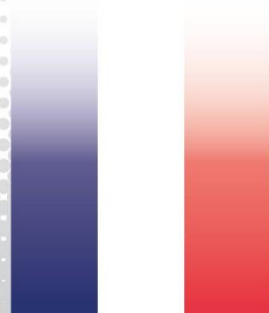
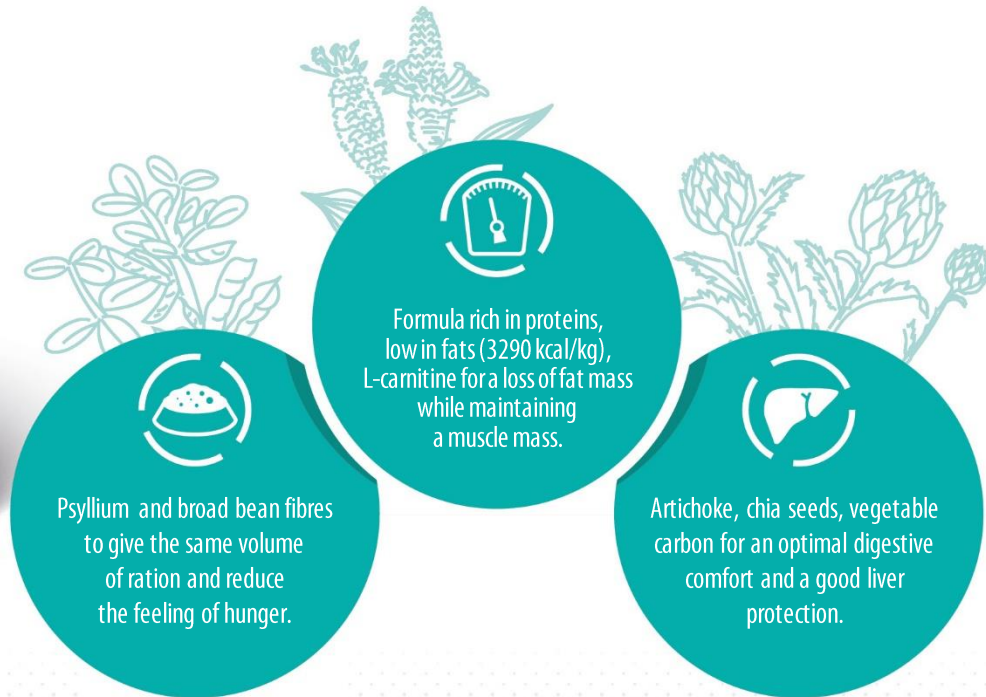
Low calorie • Satiety satisfaction

PLANT ACTIVE BENEFIT

Complete dietetic food for cats with particular nutritional needs
"Reduction of excessive body weight".
"Regulation of glucose supply (*Diabetes mellitus*)".



Bag of 2 kg



Made in France



OBESITE

Low calorie • Satiety satisfaction

PLANT ACTIVE BENEFIT



INGREDIENTS

Dehydrated animal proteins (28% min.) (chicken, duck, turkey, pork). Broad bean fibres. Corn gluten. Rice. Tapioca. Apple fibres. Duck fat. Linseed. Peas. Dehydrated fish. Animal protein hydrolysates. Fish autolysates (0,6%). Clay. Psyllium fibres. Brewer's yeast. Artichoke. Fish oil. Ammonium chloride. Chia seeds. Potassium chloride. Sea salt. Calcium sulphate. Methionine. Taurine. Fructo-oligosaccharides. Vegetable carbon. Yucca. Rosemary extracts. L-carnitine. Vitamins and trace elements.

Carbohydrate sources: rice, tapioca, peas. Sources of omega 3: linseed, fish oil, chia seeds. Low level of mono- and disaccharides.

CONTENT BY VOLUME

Crude protein 36 %. Crude fat 10 %. Crude fibre 12 %. Inorganic matter 7.5 %. Metabolisable energy 3,290 kcal/kg. Calcium 1.2%. Phosphorus 1 %. Sodium 0.5 %. Potassium 0.9 %. Magnesium 0.12%. Linoleic acid 12 g/kg. Alpha-linolenic acid 7 g/kg. EPA + DHA 1 g/kg. Lysin 21 g/kg. Methionine 8.6 g/kg. L-carnitine 50 mg/kg. Taurine 1,800 mg/kg. Copper 22 mg/kg. Zinc 152 mg/kg (including Zinc chelate 32 mg/kg). Manganese 85 mg/kg. Iodine 1.8 mg/kg. Selenium 0.47 mg/kg. Vitamin A 17,600 UI. Vitamin D3 1,600 UI. Vitamin E 300 UI. Vitamin B1 96 mg/kg. Vitamin B2 4 mg/kg. Pantothenic acid 13.9 mg/kg. Vitamin B6 4.8 mg/kg. Vitamin B12 0.024 mg/kg. Vitamin PP 52 mg/kg. Biotin 1.6 mg/kg. Folic acid 1 mg/kg. Choline chloride 3,525 mg/kg.

INSTRUCTIONS

Serve the food gradually during the transition from the pet's previous food, straight from the bag or rehydrated according to the rationing table printed on the bag. Daily amounts need to be adjusted according to the animal's breed, weight and activity. Drinking water should be available at all times. It is recommended that a veterinarian's opinion be sought before use or before extending the period of use.

Recommended length of time (in the case of excessive body weight): Until target body weight is achieved and after if required to maintain target bodyweight.

Recommended length of time (in the case of *Diabetes mellitus*): Initially up to 6 months.

Optimal weight of cat		2 kg	3 kg	4 kg	5 kg	6 kg	7 kg	8 kg	9 kg	10 kg	11 kg
Overweight ≥ 20%	Daily quantity	41 g	54 g	65 g	76 g	86 g	95 g	104 g	112 g	120 g	128 g
	Average duration in days	49	37	31	26	23	21	19	18	17	16
Overweight < 20%	Daily quantity	39 g	51 g	62 g	71 g	81 g	90 g	98 g	106 g	114 g	121 g
	Average duration in days	51	39	32	28	25	22	20	19	18	17
Weight maintenance	Daily quantity	48 g	63 g	77 g	89 g	101 g	112 g	122 g	132 g	142 g	152 g
	Average duration in days	42	32	26	22	20	18	16	15	14	13

Storage precautions: to preserve the food's qualities, store in a cool, dark and dry place.

