

PROTECT

Plants & Well-being

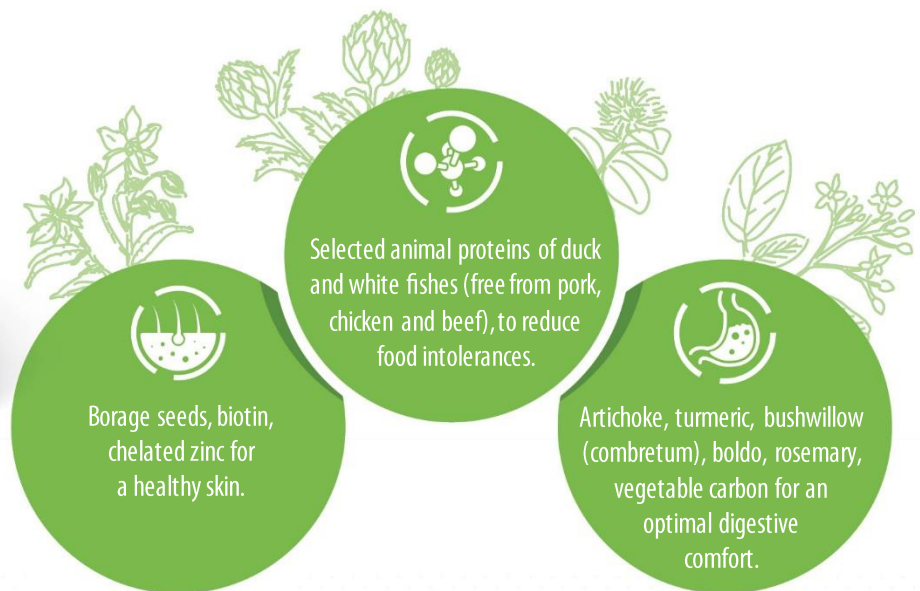


DERMATO

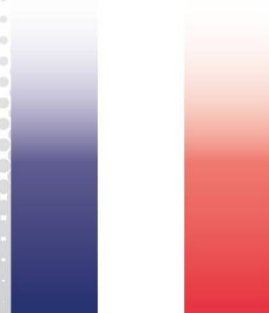
Hypoallergenic • Skin reinforcement

PLANT ACTIVE BENEFIT

Complete dietetic food for dogs with particular nutritional needs
"Support of skin function in the case of dermatosis and excessive loss of hair".
"Reduction of ingredient and nutrient intolerances".
This food is also suitable as a support for
"Nutritional restoration, convalescence".



 Bags of 2 kg & 12 kg



Made in France



INGREDIENTS

Dehydrated duck proteins (15% min.). Dehulled oats. Rice. Tapioca. Duck fat. Sweet potato. Apple fibres. Potato proteins. Linseed. Dehydrated fish (3% min.). Peas. Brewer's yeast. Animal protein hydrolysates. Wild white fish protein hydrolysates (including cod, anglerfish). Fish autolysates (1%). Borage seeds. Clay. Fructo-oligosaccharides. Fish oil. Sea salt. Artichoke. Turmeric. Bushwillow. Boldo. Rosemary. Vegetable carbon. Rosemary extracts. Vitamins and trace elements.

High level of linoleic acid (LA) and of sum of eicosapentaenoic acid (EPA) and docosahexaenoic acid (DHA): sum of EPA + DHA = 0.16%. Selected and limited protein sources: dehydrated duck proteins, dehydrated fish, wild white fish protein hydrolysates (including cod, anglerfish), potato proteins (without dehydrated chicken, pork, beef protein). Selected carbohydrate sources: dehulled oats, rice, tapioca, sweet potato. Sources of omega 6 and 3: borage seeds, duck fat, linseed, fish oil. High energy density (3838 kcal/kg), high concentrations of essential nutrients and highly digestible ingredients.

CONTENT BY VOLUME

Crude protein 26%. Crude fat 16%. Crude fibre 2.5%. Inorganic matter 7%. Metabolisable energy 3838 kcal/kg. Calcium 1.25%. Phosphorus 0.85%. Sodium 0.36%. Potassium 0.65%. Magnesium 0.1%. Linoleic acid 18.5 g/kg. Alpha-linolenic acid 10.4 g/kg. EPA + DHA 1.6 g/kg. Lysine 15.1 g/kg. Methionine 4.8 g/kg. Copper 20 mg/kg. Zinc 197 mg/kg (including chelated zinc 72 mg/kg). Manganese 76 mg/kg. Iodine 3.1 mg/kg. Selenium 0.5 mg/kg (of which Organic selenium 0.06 mg/kg). Vitamin A 13,600 UI. Vitamin D3 900 UI. Vitamin E 250 UI. Vitamin B1 84 mg/kg. Vitamin B2 10.4 mg/kg. Pantothenic acid 42 mg/kg. Vitamin B6 9.6 mg/kg. Vitamin B12 0.22 mg/kg. Vitamin PP 32 mg/kg. Biotin 2.4 mg/kg. Folic acid 2.2 mg/kg. Choline chloride 1,725 mg/kg.

INSTRUCTIONS

Serve the food gradually during the transition from the pet's previous food, straight from the bag or rehydrated according to the rationing table printed on the bag. Daily amounts need to be adjusted according to the animal's breed, weight and activity. Drinking water should be available at all times. It is recommended that a veterinarian's opinion be sought before use and before extending the period of use.

Recommended length of time (in the case of dermatosis): Initially up to 2 months. Recommended length of time (in the case of food intolerances): 3 to 8 weeks; if signs of intolerance disappear this feed can be used initially up to one year.

Optimal weight of dog		2 kg	5 kg	10 kg	15 kg	20 kg	25 kg	30 kg	40 kg	50 kg	60 kg	70 kg	80 kg
Normal activity	Daily quantity	48 g	96 g	161 g	218 g	271 g	320 g	367 g	456 g	539 g	618 g	694 g	767 g
	Average duration in days - 2kg bags	42	21	12	9	7	6	5	4	4	3	3	3
	Average duration in days - 12kg bags	250	125	75	55	44	38	33	26	22	19	17	16
Moderate activity	Daily quantity	44 g	87 g	147 g	199 g	246 g	291 g	334 g	414 g	490 g	562 g	630 g	697 g
	Average duration in days - 2kg bags	45	23	14	10	8	7	6	5	4	4	3	3
	Average duration in days - 12kg bags	273	138	82	60	49	41	36	29	24	21	19	17
Sterilized	Daily quantity	42 g	83 g	139 g	189 g	234 g	277 g	317 g	394 g	465 g	534 g	599 g	662 g
	Average duration in days - 2kg bags	48	24	14	11	9	7	6	5	4	4	3	3
	Average duration in days - 12kg bags	286	145	86	63	51	43	38	30	26	22	20	18

Storage precautions: to preserve the food's qualities, store in a cool, dark and dry place.



Pont-Réan BP38001 • 35580 Guichen, FRANCE

www.pro-nutrition.flatazor.com

pro-nutrition.flatazor@sopral.com

