

PROTECT

Plants & Well-being



CARE 8+

Renal support • Improved mobility

PLANT ACTIVE BENEFIT

Complete dietetic food for cats with particular nutritional needs

“Support of renal function in case of chronic renal insufficiency”.

“Support of the metabolism of joints in the case of osteoarthritis”.

This food is also suitable as a support for

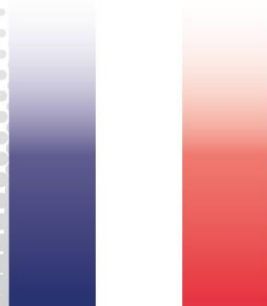
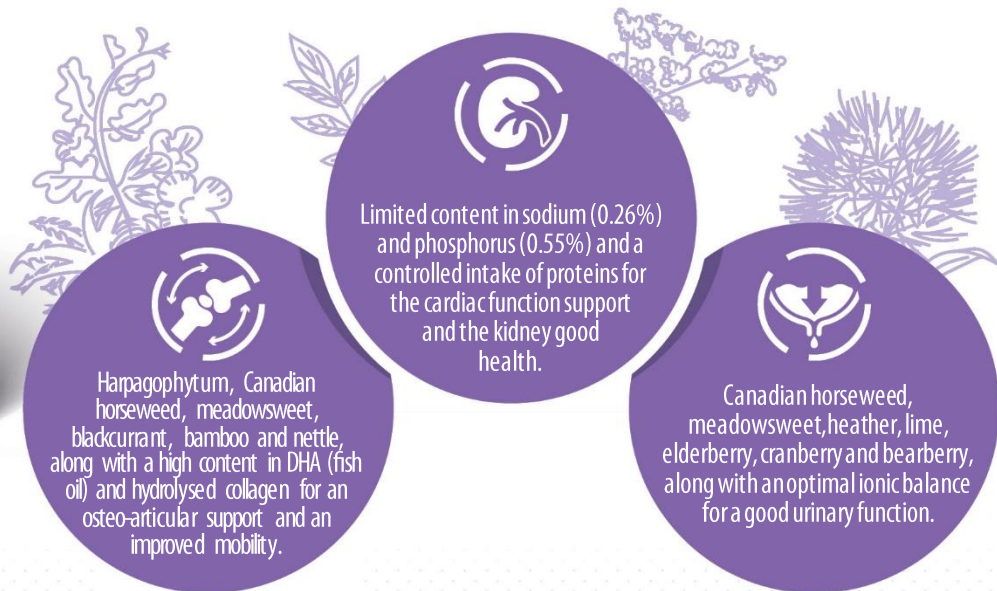
“Nutritional restoration, convalescence”.

“Support of heart function in the case of chronic cardiac insufficiency”.

“Support of skin function in the case of dermatosis and excessive loss of hair”.



Bag of 2 kg



Made in France



CARE 8+

Renal support • Improved mobility

PLANT ACTIVE BENEFIT



INGREDIENTS

Dehydrated animal proteins (20% min.) (chicken, duck, turkey, pork). Corn. Peas. Corn gluten. Duck fat. Tapioca. Apple fibres. Potato starch. Rice. Animal protein hydrolysates. Linseed. Broad bean fibres. Fish oil. Calcium carbonate. Clay. Brewer's yeast. Fish autolysates (0,6%). Methionine. Ammonium chloride. Fructo-oligosaccharides. Calcium sulphate. Marine peptides (type II hydrolysed collagen). Taurine. Canadian horseweed. Meadowsweet. Harpagophytum. Vegetable carbon. Bamboo. Artichoke. Boldo. Bushwillow. Turmeric. Rosemary. Heather. Lime. Elderberries. Bearberry. Nettle. Cranberry. Blackcurrant. Yucca. Rosemary extracts. Vitamins and trace elements.

Protein sources: dehydrated chicken, duck, turkey and pork proteins, corn gluten. Sources of omega 3: linseed, fish oil. High energy density (4,132 kcal/kg), high concentrations of essential nutrients and highly digestible ingredients. High level of linoleic acid (LA) (2.65%) and of sum of eicosapentaenoic acid (EPA) and docosahexaenoic acid (DHA): sum of EPA + DHA = 0.49%.

CONTENT BY VOLUME

Crude protein 30 %. Crude fat 15.5 %. Crude fibre 4 %. Inorganic matter 6 %. Metabolisable energy 3,901 kcal/kg. Calcium 1 %. Phosphorus 0.55%. Sodium 0.26 %. Potassium 0.59 %. Magnesium 0.09%. Linoleic acid 26.5 g/kg. Alpha-linolenic acid 6.5 g/kg. EPA + DHA 4.9 g/kg. Lysin 16.3 g/kg. Methionine 9.6 g/kg. Taurine 2,000 mg/kg. Copper 19 mg/kg. Zinc 134 mg/kg (including Zinc chelate 32 mg/kg). Manganese 78 mg/kg. Iodine 1.6 mg/kg. Selenium 0.5 mg/kg (of which Organic selenium 0.12 mg/kg). Vitamin A 19,800 UI. Vitamin D3 1,800 UI. Vitamin E 400 UI. Vitamin B1 108 mg/kg. Vitamin B2 4.5 mg/kg. Pantothenic acid 15.6 mg/kg. Vitamin B6 5.4 mg/kg. Vitamin B12 0.027 mg/kg. Vitamin PP 58.5 mg/kg. Biotin 1.8 mg/kg. Folic acid 1.1 mg/kg. Choline chloride 3,525 mg/kg.

INSTRUCTIONS

Serve the food gradually during the transition from the pet's previous food, straight from the bag or rehydrated according to the rationing table printed on the bag. Daily amounts need to be adjusted according to the animal's breed, weight and activity. Drinking water should be available at all times. It is recommended that advice from a veterinarian be sought before use or before extending the period of use.

Recommended length of time (in the case of chronic renal insufficiency): Initially up to 6 months. Recommended length of time (in the case of osteoarthritis): Initially up to 3 months.

Optimal weight of cat		2 kg	3 kg	4 kg	5 kg	6 kg	7 kg	8 kg	9 kg	10 kg	11 kg
Outdoor	Daily quantity	45 g	59 g	71 g	83 g	94 g	104 g	114 g	123 g	132 g	141 g
	Average duration in days	44	34	28	24	21	19	18	16	15	14
Indoor	Daily quantity	41 g	54 g	65 g	75 g	85 g	94 g	103 g	112 g	120 g	128 g
	Average duration in days	49	37	31	27	24	21	19	18	17	16
Sterilized	Daily quantity	31 g	40 g	49 g	57 g	64 g	71 g	77 g	84 g	90 g	96 g
	Average duration in days	65	50	41	35	31	28	26	24	22	21

Storage precautions: to preserve the food's qualities, store in a cool, dark and dry place.

