

Since 1982

TRAD^{CO}

Defining the Details

Purchasing Guide





Selecting Your TradCo Hardware

At TradCo we believe that when a house is finished with care it transforms – it becomes a home – a part of people’s lives.

This hardware guide has been created to share our passion for design and to assist you to realise your design aspirations.

We know that selecting the right hardware for your home or project can be a daunting task, so we want to simplify that process.

By following each step in our hardware guide we’ll help you find the right styles, finishes and accessories to suit your home.

For further information and assistance please visit our website: tradco.com.au

Step 1

Determine the architectural style of your home and select complementary door furniture

Step 2

Select a finish to complement the colour scheme and style of your home

Step 3

Determine whether your door needs a lock and choose the correct locking mechanism

Step 4

Select the right hinges for your needs, available in a range of matching finishes

Step 5

Select matching accessories to your selected door furniture

Step 1

Determine the architectural style of your home and select complementary door furniture:

Colonial



2005



21371 UPB

Queenslander



1025 PB



1024 PB

Victorian



0907 CP



1040 CP

Federation/Edwardian



0854 AB



0786 AB

Art Deco



1090 CP



0804 CP

Bungalow



1060 AC



0728 AC

Step 1

Determine the architectural style of your home and select complementary door furniture:

French Provincial



Image: Oswald Homes



6357 RN



6354 RN

Mediterranean



1925 MB



9620 MB

Modern Farm House



Image: Abbie Melle / @abbie_melle



9707 AB



0727 AB

Step 2

Select a finish to complement the colour scheme and style of your home:

Polished Brass (PB)



A warm accent

- A classic polished and lacquered finish.
- Finish will age and tarnish over time, developing a unique character.

Durability



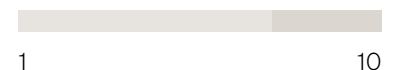
Satin Brass (SB)



Soft pops of colour

- Lightly brushed on a polishing wheel for a contemporary look.
- To keep Satin Brass looking stunning year-round, keep dry and clean regularly with a soft cloth.

Durability



Unlacquered Polished Brass (UPB)



Classic aged charm

- A classic polished and unlacquered finish.
- Designed to age gracefully and naturally, the unlacquered polish will wear through use to develop distinct colour and a timeless aged look.

Durability



Unlacquered Satin Brass (USB)



Contemporary meets classic

- Lightly brushed on a polishing wheel for a contemporary look.
- This modern unlacquered finish will age naturally over time to offer seamless application in both classic and contemporary spaces.

Durability



Antique Brass (AB)



Earthy undertones

- Each product in this finish is hand aged, meaning each product has its own distinct variation and depth of colour, reflecting a mix of lighter and darker finishes.
- This unique finish is designed to wear and age naturally over time, developing beautiful variations in the depth of colour.

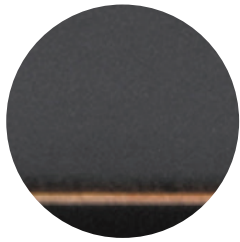
Durability



Step 2

Select a finish to complement the colour scheme and style of your home:

Antique Copper (AC)



A great heritage look

- Each product in this finish is hand aged, meaning each product has its own distinct variation and depth of colour.
- Designed to age, this finish will continue to wear and form distinct characteristics that look beautiful at every stage of its life.

Durability



Matt Black (MB)



Timeless all rounder

- This highly-durable finish is achieved through powder-coating or an ageing process depending on the product.

Durability



Chrome Plate (CP)



Sleek and adaptable

- Chrome plating not only looks stunning but is incredibly durable.
- This finish will remain at its best for years to come with occasional cleaning to maintain its lustre and brightness.

Durability



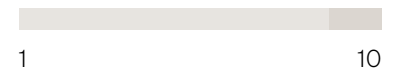
Satin Chrome (SC)



Modern and refined

- We achieve this finish by carefully brushing Chrome Plate to remove shine and develop a sleek satin finish.
- Occasional cleaning will keep this highly-durable finish looking its best for years to come.

Durability



Rumbled Nickel (RN)



Character filled

- This unique finish is achieved through traditional methods to create something truly special.
- Nickel-plating is aged before each product is 'rumbled' with small stones to reveal glimpses of the nickel through the antique finish.

Durability



Polished Nickel (PN)



Elegant neutral

- A highly durable finish that is warmer than chrome.
- Highly polished nickel-plate gives this finish its beautiful depth of colour.
- Regular cleaning will maintain the lustre of this finish.

Durability



Satin Nickel (SN)



Understated and chic

- Soft to the touch and exhibiting warm hues.
- To achieve this finish, nickel-plated brass is very lightly finished, before being plated with satin nickel.

Durability



Other finishes you may come across

BR - Brown

BL - Black

WH - White

IV - Ivory

PM - Polished Metal

AF - Antique Finish

PVD - Anti-tarnish Brass

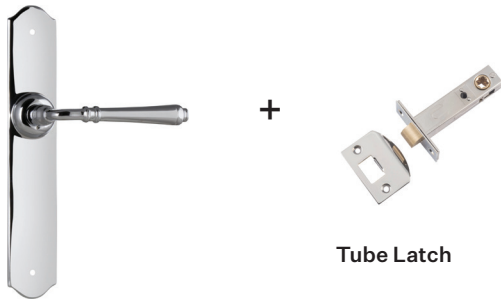
EB - Electro-plated Brass

Step 3

Choose the correct locking mechanism:

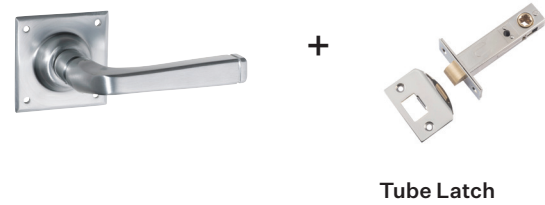
Passage Set

Used when a door doesn't need to be locked.



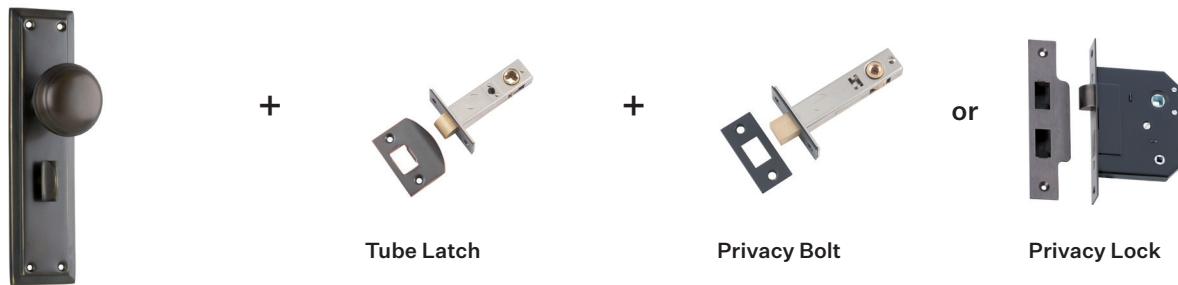
Lever on Rose Passage Set

Used when a door doesn't need to be locked.



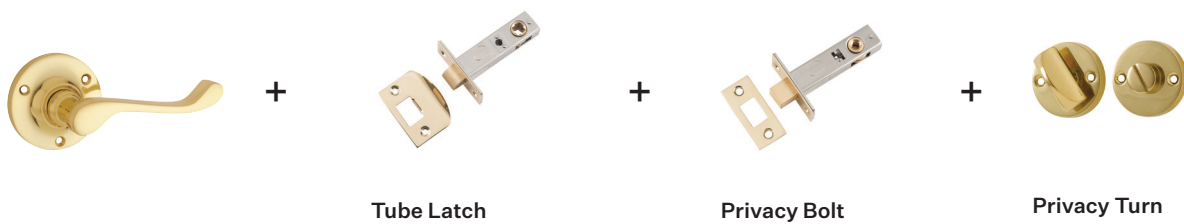
Privacy Set

Ideal for bathrooms, they have a thumb turn for privacy.



Lever on Rose Privacy Set

Ideal for bathrooms, they have a thumb turn for privacy.



Rebated Locks

Rebated doors are commonly referred to as french doors, they are designed to interlock to avoid swinging open.



Step 4

Choose the most appropriate hinge for your door type – consider height, weight and door thickness.

All TradCo hinges are solid brass and supplied with matching stainless-steel screws, solid brass screws are also available.



Ball Bearing

- A premium hinge
- Durable, smoother and quieter
- Can be used on solid core doors, both external and internal (including some oversized doors)



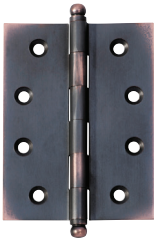
Fixed Pin (Butt Hinge)

- Standard choice for internal or external doors which are not too heavy
- Mortice flush into jam and door



Hirline

- Easy to install, don't need to be recessed into door
- For internal light-weight doors



Loose Pin

- Loose pin enables easier removal of doors; simply remove the pin rather than unscrewing the hinge
- For internal doors only



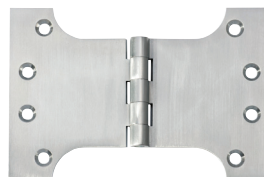
Broad Butt

- Great for doors that need a wide throw or to open parallel to the wall
- Often used on double or french doors



Lift Off

- Typically used on toilet and bathroom doors so that in an emergency the door may be removed easily without unscrewing the hinge



Parliament

- A traditional version of the Broad Butt hinge

Step 5

Match accessories to your selected door furniture:

Match your lever or knob to other front door accessories. For example, knockers, bells and centre door knobs.



Image Credit: Sen Built



1258 CP



1275 CP



1308 CP

Don't forget other elements of your door for example, bolts and door stops.



Image Credit: Hilary Walker



1412 AC



1513 AC



1509 AC

It's important to also tie in lock elements such as cylinders, faceplate, privacy turns and escutcheons (depending on the lock functionality needed).



2187 MB



2057 MB



2055 MB

Match your lighting and electrical fittings.



Image Credit: Marnie Hawson



5351 MB



5310 MB



5349 MB

Find matching window fittings to suit, such as stays, sash lifts and window fasteners.



Image Credit: Hilary Walker



2315 AB



2311 AB



2302 AB

Carry through to your kitchen cabinetware fittings.



Image Credit: Abbie Melle



9693 MB



9565 MB



9689 MB



tradco.com.au
tradco.co.nz