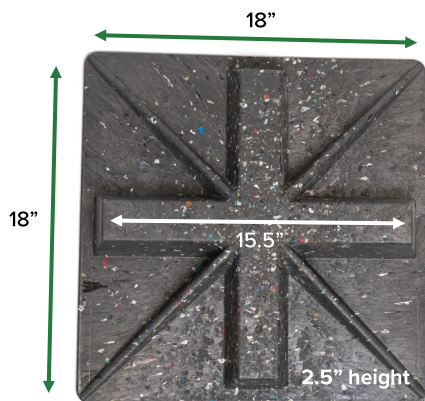
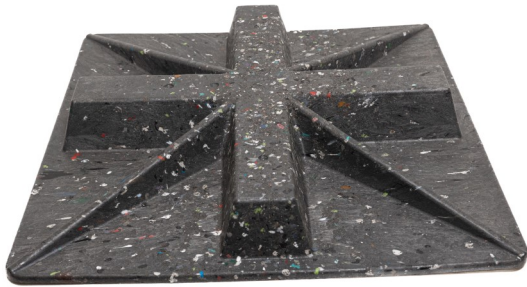
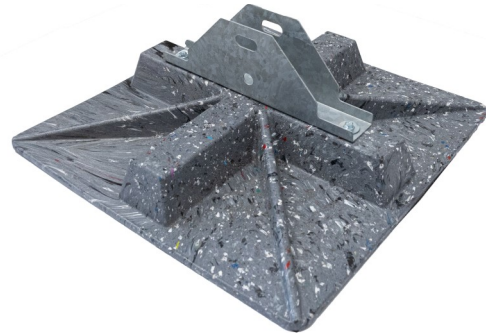


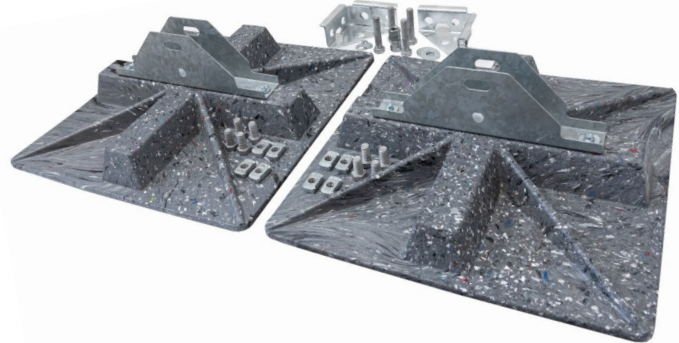
18X18 BASE ONLY



18X18 BASE SUPPORT



18X18 BASE KIT



BASE ONLY

BASE MATERIAL: 100% recycled plastic regrind, 80-90% polyolefins. Coloration will vary.

SHIPPING: Ships in case of (4) in 18x18x10 box. 26 lbs, DW=20 lbs.

SIZE: 18" x 18" x 2.5" **WEIGHT:** 7.05 lbs each

SUGGESTED ROOFTOP LOADING:

Recommended allowable load to roof surface not to exceed 800 lbs. Ultimate load shall not exceed 2,500 lbs per base.

SPACING: Supports should not exceed 12' on center.

WARRANTY: 2 year limited warranty.

BASE SUPPORT

PRODUCT DESCRIPTION: The MIRO-CG 18x18 Base Support includes the MIRO volcano strut sup-

port for easy attachment of strut for various rooftop applications.

HARDWARE MATERIAL: Galvanized or stainless steel

SHIPPING: Ships in case of (2) in 18x18x18 box.

WEIGHT: 12.7 lbs each

BASE KIT

PRODUCT DESCRIPTION:

The MIRO-CG 18x18 Base Kit includes: (2) 18x18 bases with volcano strut support, (2) corner brackets, and (8) strut nuts w/ bolts.

HARDWARE MATERIAL: Galvanized or stainless steel

SHIPPING: Ships in case of (2) in 18x18x18 box. 38 lbs, DW=29 lbs.

WEIGHT: 12.7 lbs each