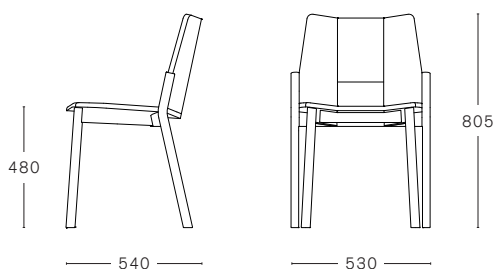


MC 12 TRONCO CHAIR



ASH FRAME  
 ASH FRAME WITH  
 NON REMOVABLE UPHOLSTERY  
 Rohi Topia

STACKABLE

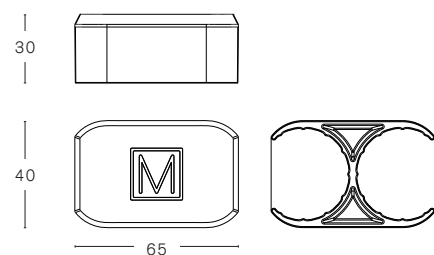


STACKABLE ON DOLLY



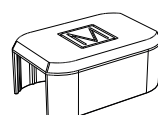
MAX. PER BOX	GROSS WEIGHT	VOLUME	BOX SIZE
2 CHAIRS	CA. kg 16,00	0,32 m <sup>3</sup>	620 x 560 x 920 mm

MC 12 TRONCO CONNECTOR



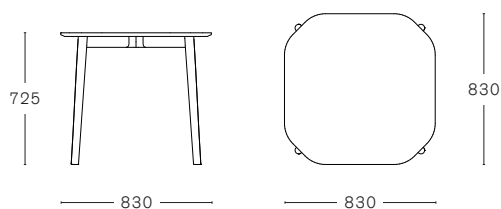
PLASTIC CONNECTOR

ROW CONNECTOR



PLASTIC PA6 + 30% GLASS FIBER	GROSS WEIGHT
	CA. g 30

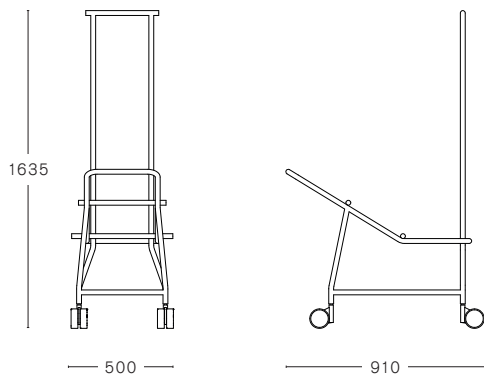
MC 12 TRONCO TABLE



ASH FRAME

MAX. PER BOX	GROSS WEIGHT	VOLUME	BOX SIZE
1 TABLE	CA. kg 19,00	0,18 m <sup>3</sup>	1120 x 970 x 170 mm

MC 12 TRONCO DOLLY



POWDER COATED METAL

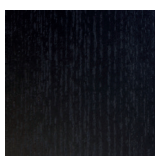
MAX. PER BOX	GROSS WEIGHT	VOLUME	BOX SIZE
1 DOLLY	CA. kg 18,00	0,90 m <sup>3</sup>	1020 x 520 x 1690 mm

FINISHINGS

ASH



NATURAL



BLACK  
RAL 9005



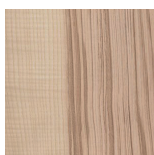
WHITE  
RAL 9003



WALNUT STAINED



CHESTNUT STAINED



OLIVED\*



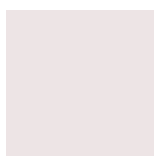
RED\*  
RAL 2002



GREEN\*  
RAL 6007

\* NOT FOR TRONCO TABLE

POWDER COATED METAL



WHITE  
RAL 9003



BLACK  
RAL 9005

MAT PLASTIC



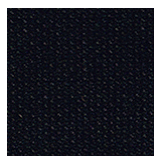
RED  
RAL 3020



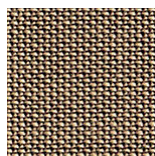
BLACK  
RAL 8022

FABRIC UPHOLSTERY

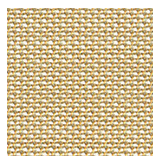
ROHI TOPIA



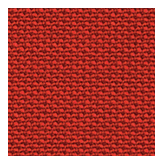
EBONY



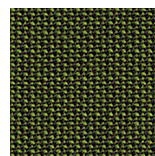
WALNUT



MOON



CHILI



PALM