

# Soffio Wall Horizontal

STWAHR

CE IP20 UK  
CA

## Materials

Hand blown transparent borosilicate glass and hand finished or electroplated brass.

## Weight incl. canopy

~2 kg

## Power Input

220-240V 50-60Hz

## Light Source (included)

Proprietary Softspot50 LED, 9W, 380 Lumens, 2700K warm white. CRI>95. 50% downwards and 50% upwards

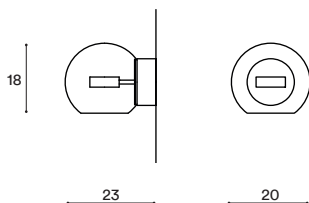


SOFFIO WALL HORIZONTAL 25

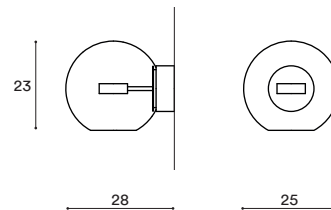
## CONFIGURATION

### STEP 1 - CHOOSE YOUR SIZE

SIZE (UNIT: CM)



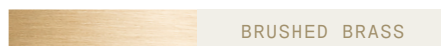
20



25

### STEP 2 - CHOOSE YOUR METAL FINISH

METAL FINISH



BRUSHED BRASS



BLACKENED BRASS



BRUSHED BRONZE



BRUSHED NICKEL

### STEP 3 - CHOOSE YOUR CANOPY AND DRIVER

CANOPY AND DRIVER

#### + STANDARD BUILTIN PHASECUT DRIVER

A. We provide a D120 canopy with a builtin LED driver with **phasecut dimming** as standard.

D120 | Ø12 X 4CM

MATCHING FINISH

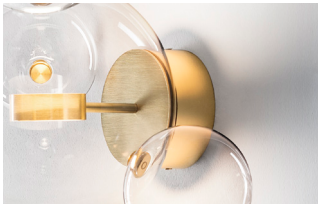


PHASECUT

**+ OTHER BUILTIN DRIVERS AVAILABLE ON REQUEST**

B. We can also provide builtin LED drivers with **1-10 Volt, Switch / Push or DALI** dimming, if required by your electrician. These dimming and canopy combinations are available as following:

D120 | Ø12 X 4CM



MATCHING FINISH

1-10 VOLT

SWITCH/PUSH

DALI

**+ REMOTE DRIVERS AVAILABLE ON REQUEST**

B. If your electrician can wire the LED Drivers remotely (rather than builtin to the canopy) we can provide the following options:

D120 | Ø12 X 4CM



MATCHING FINISH

PHASECUT

1-10 VOLT

SWITCH/PUSH

DALI

# Soffio Wall Vertical 18

STWAVR18

CE IP20 UK CA

## Materials

Hand blown transparent borosilicate glass and hand finished or electroplated brass.

## Weight incl. canopy

~2 kg

## Power Input

220-240V 50-60Hz

## Light Source (included)

Proprietary Softspot75 LED, 9W, 380 Lumens, 2700K warm white. CRI>95. 75% downwards and 25% upwards

Custom structure dimensions available on request.



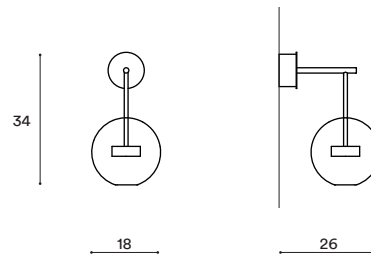
SOFFIO WALL VERTICAL 18

## CONFIGURATION

### STEP 1 - CHOOSE YOUR METAL FINISH



### SIZE (UNIT: CM)



### STEP 2 - CHOOSE YOUR CANOPY AND DRIVER

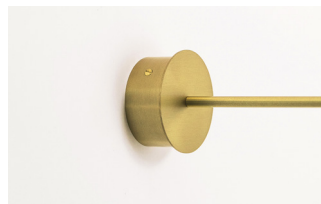
CANOPY AND DRIVER

#### + STANDARD BUILTIN PHASECUT DRIVER

A. We provide a D95 canopy with a builtin LED driver with **phasecut dimming** as standard.

D95 | Ø9.5 X 4CM

MATCHING FINISH

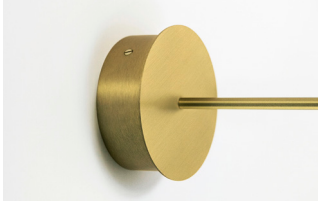


PHASECUT

#### + OTHER BUILTIN DRIVERS AVAILABLE ON REQUEST

B. We can also provide builtin LED drivers with **1-10 Volt, Switch / Push or DALI** dimming, if required by your electrician. These dimming and canopy combinations are available in the following finishes:

D135 | Ø13.5 X 4.5CM



MATCHING FINISH

1-10 VOLT

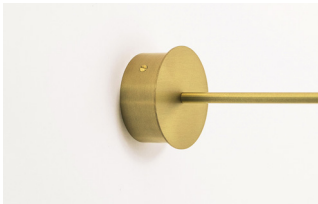
SWITCH/PUSH

DALI

#### + REMOTE DRIVERS AVAILABLE ON REQUEST

B. If your electrician can wire the LED Drivers remotely (rather than builtin to the canopy) we can provide the following options:

D95 | Ø9.5 X 4CM



MATCHING FINISH

PHASECUT

1-10 VOLT

SWITCH/PUSH

DALI