

# Gem Pendant Cluster 06

GMPECU06

CE IP20 UK CA

## Materials

Hand blown corroded borosilicate glass and hand finished or electroplated brass.

## Weight incl. canopy

~7 kg

## Power Input

220-240V 50-60Hz

## Light Source (included)

6 Proprietary Gem LEDs.

13W, 1240 Lumens, 2700K warm white. CRI>95.

Optional Downlight available on request

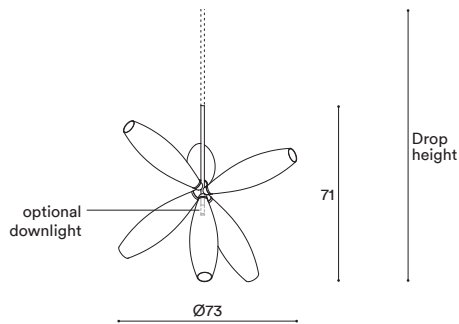


GEM PENDANT CLUSTER 06

## CONFIGURATION

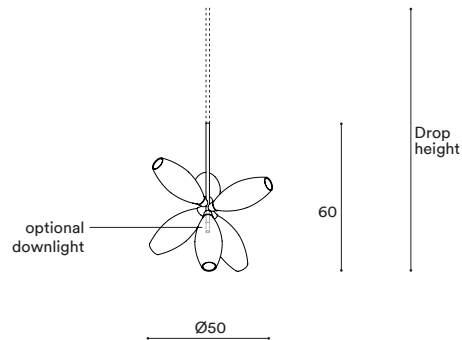
### STEP 1 - CHOOSE YOUR SIZE

SIZE (UNIT: CM)



CLUSTER 06

Min. Drop Height: 76 cm

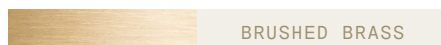


CLUSTER 06 SMALL

Min. Drop Height: 65 cm

### STEP 2 - CHOOSE YOUR METAL FINISH

METAL FINISH



BRUSHED BRASS



BLACKENED BRASS



POLISHED NICKEL



BRUSHED BRONZE



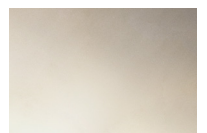
BRUSHED NICKEL

### STEP 3 - CHOOSE YOUR GLASS FINISH

GLASS



CORRODED



MIST

**Metal tube to order**

Specify your Drop height in cm to our sales team.

Note:

No cable showing

Not adjustable on site.

**Drop Height Kit**

Note:

No cable showing, Adjustable on site

Drop Height min.: 81/70 cm, max.:

236/225 cm by combining five tubes of different length from 5cm to 80cm

MADE TO ORDER

DROP HEIGHT KIT

**+ STANDARD BUILTIN PHASECUT DRIVER**

A. We provide a D120 canopy with a builtin LED driver with **phasecut dimming** as standard.

D120 | Ø12 X 4.5CM



MATCHING FINISH

PHASECUT

**+ OTHER BUILTIN DRIVERS AVAILABLE ON REQUEST**

B. We can also provide builtin LED drivers with **1-10 Volt, Switch / Push or DALI** dimming, if required by your electrician.

D120 | Ø12 X 4.5CM



MATCHING FINISH

1-10 VOLT

SWITCH/PUSH

DALI

**+ REMOTE DRIVERS AVAILABLE ON REQUEST**

B. If your electrician can wire the LED Drivers remotely (rather than builtin to the canopy) we can provide the following options:

D85 | Ø8.5 X 4CM



MATCHING FINISH

PHASECUT

1-10 VOLT

SWITCH/PUSH

DALI

# Gem Pendant Cluster 09

GMPECU09

CE IP20 UK CA

## Materials

Hand blown corroded borosilicate glass and hand finished or electroplated brass.

## Weight incl. canopy

~9 kg

## Power Input

220-240V 50-60Hz

## Light Source (included)

9 Proprietary Gem LEDs.

20W, 1860 Lumens, 2700K warm white. CRI>95.

Optional Downlight available on request

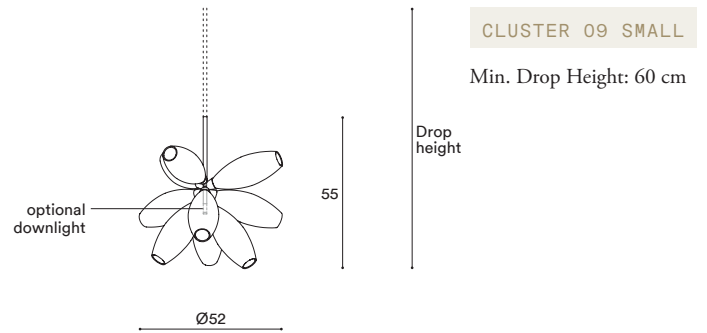
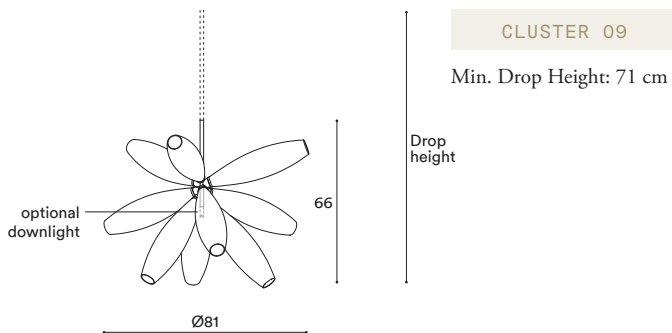


GEM PENDANT CLUSTER 09

## CONFIGURATION

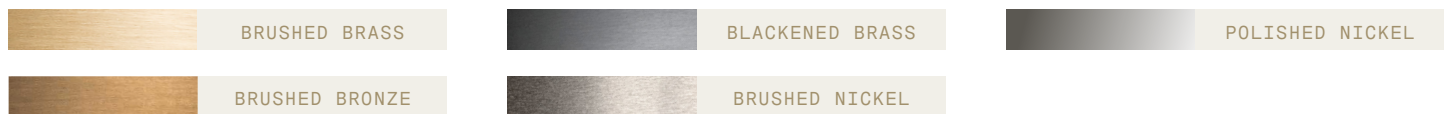
### STEP 1 - CHOOSE YOUR SIZE

SIZE (UNIT: CM)



### STEP 2 - CHOOSE YOUR METAL FINISH

METAL FINISH



### STEP 3 - CHOOSE YOUR GLASS FINISH

GLASS



**Metal tube to order**

Specify your Drop height in cm to our sales team.

Note:

No cable showing

Not adjustable on site.

**Drop Height Kit**

Note:

No cable showing, Adjustable on site

Drop Height min.: 76/65 cm, max.:

231/220 cm by combining five tubes of different length from 5cm to 80cm

MADE TO ORDER

DROP HEIGHT KIT

**+ STANDARD BUILTIN PHASECUT DRIVER**

A. We provide a D170 canopy with a builtin LED driver with **phasecut dimming** as standard.

D170 | Ø17 X 5CM



MATCHING FINISH

PHASECUT

**+ OTHER BUILTIN DRIVERS AVAILABLE ON REQUEST**

B. We can also provide builtin LED drivers with **1-10 Volt, Switch / Push or DALI** dimming, if required by your electrician.

D170 | Ø17 X 5CM



MATCHING FINISH

1-10 VOLT

SWITCH/PUSH

DALI

**+ REMOTE DRIVERS AVAILABLE ON REQUEST**

B. If your electrician can wire the LED Drivers remotely (rather than builtin to the canopy) we can provide the following options:

D120 | Ø12 X 4.5CM



MATCHING FINISH

PHASECUT

1-10 VOLT

SWITCH/PUSH

DALI

# Gem Pendant Vertical 07

GMPEVR07

CE IP20 UK  
CA

## Materials

Hand blown corroded borosilicate glass and hand finished or electroplated brass.

## Weight incl. canopy

~8 kg

## Power Input

220-240V 50-60Hz

## Light Source (included)

7 Proprietary Gem LEDs.  
15W, 1450 Lumens, 2700K warm white. CRI>95.

Optional Downlight available on request



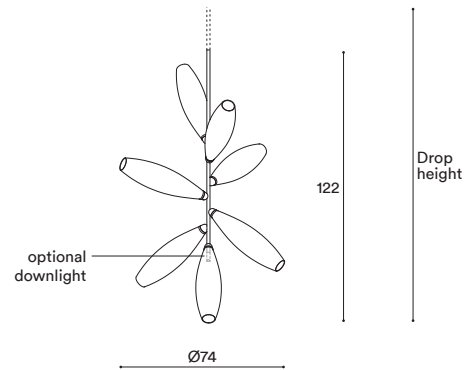
GEM PENDANT VERTICAL 07

## CONFIGURATION

### STEP 1 - CHOOSE YOUR METAL FINISH



### SIZE (UNIT: CM)



### STEP 2 - CHOOSE YOUR GLASS FINISH

GLASS



CORRODED

MIST

**Metal tube to order**

Specify your Drop height in cm to our sales team.

Note:

No cable showing

Not adjustable on site.

Drop Height Minimum: 127 cm

**Drop Height Kit**

Note:

No cable showing, Adjustable on site

Drop Height min.: 132 cm,

max.: 287 cm by combining five tubes of different length from 5cm to 80cm

MADE TO ORDER

DROP HEIGHT KIT

**+ STANDARD BUILTIN PHASECUT DRIVER**

A. We provide a D120 canopy with a builtin LED driver with **phasecut dimming** as standard.

D120 | Ø12 X 5CM



MATCHING FINISH

PHASECUT

**+ OTHER BUILTIN DRIVERS AVAILABLE ON REQUEST**

B. We can also provide builtin LED drivers with **1-10 Volt, Switch / Push or DALI** dimming, if required by your electrician.

D120 | Ø12 X 5CM



MATCHING FINISH

1-10 VOLT

SWITCH/PUSH

DALI

**+ REMOTE DRIVERS AVAILABLE ON REQUEST**

B. If your electrician can wire the LED Drivers remotely (rather than builtin to the canopy) we can provide the following options:

D85 | Ø8.5 X 4CM



MATCHING FINISH

PHASECUT

1-10 VOLT

SWITCH/PUSH

DALI

# Gem Pendant Vertical 14

GMPEVR14

CE IP20 UK  
CA

## Materials

Hand blown corroded borosilicate glass and hand finished or electroplated brass.

## Weight incl. canopy

~13 kg

## Power Input

220-240V 50-60Hz

## Light Source (included)

14 Proprietary Gem LEDs.

31W, 2900 Lumens, 2700K warm white. CRI>95.

Optional Downlight available on request



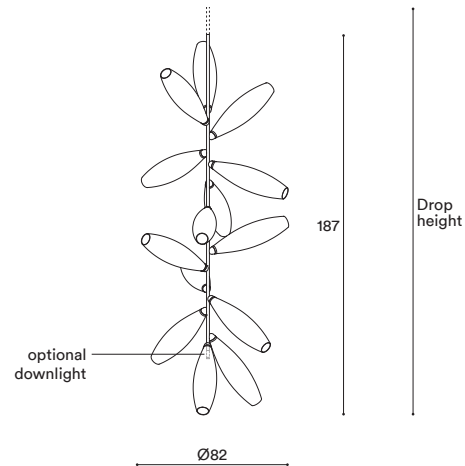
GEM PENDANT VERTICAL 14

## CONFIGURATION

### STEP 1 - CHOOSE YOUR METAL FINISH



### SIZE (UNIT: CM)

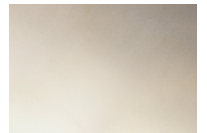


### STEP 2 - CHOOSE YOUR GLASS FINISH

GLASS



CORRODED



MIST

**Metal tube to order**

Specify your Drop height in cm to our sales team.

Note:

No cable showing

Not adjustable on site.

Drop Height Minimum: 192 cm

MADE TO ORDER

**Drop Height Kit**

Note:

No cable showing, Adjustable on site

Drop Height min.: 197 cm,

max.: 352 cm by combining five tubes of different length from 5cm to 80cm

DROP HEIGHT KIT

**+ STANDARD BUILTIN PHASECUT DRIVER**

A. We provide a D170 canopy with a builtin LED driver with **phasecut dimming** as standard.

D170 | Ø17 X 5CM



MATCHING FINISH

PHASECUT

**+ OTHER BUILTIN DRIVERS AVAILABLE ON REQUEST**

B. We can also provide builtin LED drivers with **1-10 Volt, Switch / Push or DALI** dimming, if required by your electrician.

D170 | Ø17 X 5CM



MATCHING FINISH

1-10 VOLT

SWITCH/PUSH

DALI

**+ REMOTE DRIVERS AVAILABLE ON REQUEST**

B. If your electrician can wire the LED Drivers remotely (rather than builtin to the canopy) we can provide the following options:

D120 | Ø12 X 4.5CM



MATCHING FINISH

PHASECUT

1-10 VOLT

SWITCH/PUSH

DALI