

Gem Chandelier Ring 10

GMCHRN10

CE IP20 UK CA

Materials

Hand blown corroded borosilicate glass and hand finished or electroplated brass.

Weight incl. canopy

~10 kg

Power Input

220-240V 50-60Hz

Light Source (included)

10 Proprietary Gem LEDs.

22W, 2070 Lumens, 2700K warm white. CRI>95.

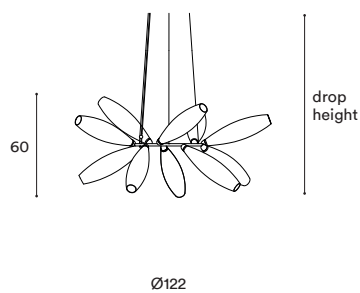


GEM CHANDELIER RING 10

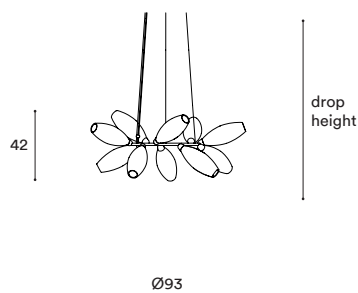
CONFIGURATION

STEP 1 - CHOOSE YOUR SIZE

SIZE (UNIT: CM)



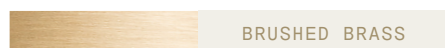
RING 10



RING 10 SMALL

STEP 2 - CHOOSE YOUR METAL FINISH

METAL FINISH



BRUSHED BRASS



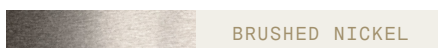
BLACKENED BRASS



POLISHED NICKEL



BRUSHED BRONZE



BRUSHED NICKEL

STEP 3 - CHOOSE YOUR GLASS FINISH

GLASS



CORRODED



MIST

Steel Wire and Flex Cable
Suspension, adjustable on site.

Available options:

4M

10M

+ STANDARD BUILTIN PHASECUT DRIVER

A. We provide a D170 canopy with a builtin LED driver with **phasecut dimming** as standard.

D170 | Ø17 X 5CM



MATCHING FINISH

PHASECUT

+ OTHER BUILTIN DRIVERS AVAILABLE ON REQUEST

B. We can also provide builtin LED drivers with **1-10 Volt, Switch / Push or DALI** dimming, if required by your electrician.

D170 | Ø17 X 5CM



MATCHING FINISH

1-10 VOLT

SWITCH/PUSH

DALI

+ REMOTE DRIVERS AVAILABLE ON REQUEST

B. If your electrician can wire the LED Drivers remotely (rather than builtin to the canopy) we can provide the following options:

D170 | Ø17 X 5CM



MATCHING FINISH

PHASECUT

1-10 VOLT

SWITCH/PUSH

DALI

Gem Chandelier Ring 14

GMCHR14

CE IP20 UK
CA

Materials

Hand blown corroded borosilicate glass and hand finished or electroplated brass.

Weight incl. canopy

~13 kg

Power Input

220-240V 50-60Hz

Light Source (included)

14 Proprietary Gem LEDs.

31W, 2900 Lumens, 2700K warm white. CRI>95.

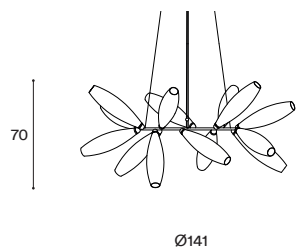


GEM CHANDELIER RING 14

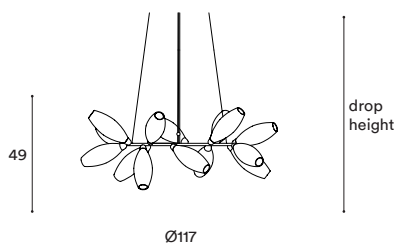
CONFIGURATION

STEP 1 - CHOOSE YOUR SIZE

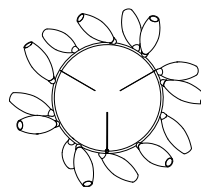
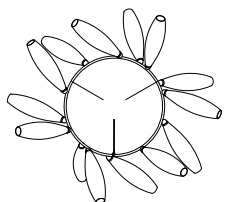
SIZE (UNIT: CM)



RING 14

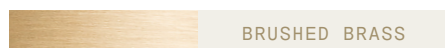


RING 14 SMALL



STEP 2 - CHOOSE YOUR METAL FINISH

METAL FINISH



BRUSHED BRASS



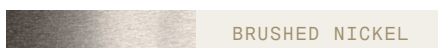
BLACKENED BRASS



POLISHED NICKEL



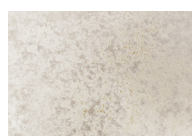
BRUSHED BRONZE



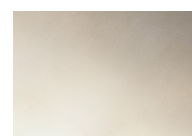
BRUSHED NICKEL

STEP 3 - CHOOSE YOUR GLASS FINISH

GLASS



CORRODED



MIST

Steel Wire and Flex Cable
Suspension, adjustable on site.

Available options:

4M

10M

+ STANDARD BUILTIN PHASECUT DRIVER

A. We provide a D170 canopy with a builtin LED driver with **phasecut dimming** as standard.

D170 | Ø17 X 5CM



MATCHING FINISH

PHASECUT

+ OTHER BUILTIN DRIVERS AVAILABLE ON REQUEST

B. We can also provide builtin LED drivers with **1-10 Volt, Switch / Push or DALI** dimming, if required by your electrician.

D170 | Ø17 X 5CM



MATCHING FINISH

1-10 VOLT

SWITCH/PUSH

DALI

+ REMOTE DRIVERS AVAILABLE ON REQUEST

B. If your electrician can wire the LED Drivers remotely (rather than builtin to the canopy) we can provide the following options:

D170 | Ø17 X 5CM



MATCHING FINISH

PHASECUT

1-10 VOLT

SWITCH/PUSH

DALI

Gem Chandelier Ring 20

GMCHR20

CE IP20 UK CA

Materials

Hand blown corroded borosilicate glass and hand finished or electroplated brass.

Weight incl. canopy

~19 kg

Power Input

220-240V 50-60Hz

Light Source (included)

20 Proprietary Gem LEDs.

44W, 4140 Lumens, 2700K warm white. CRI>95.

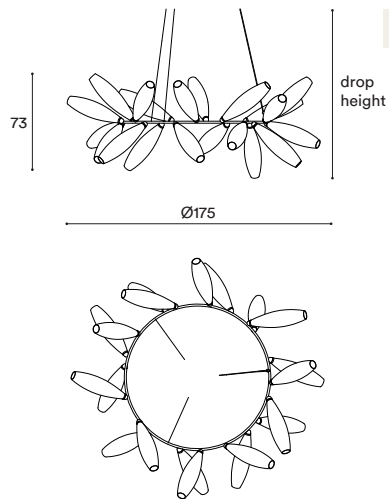


GEM CHANDELIER RING 20

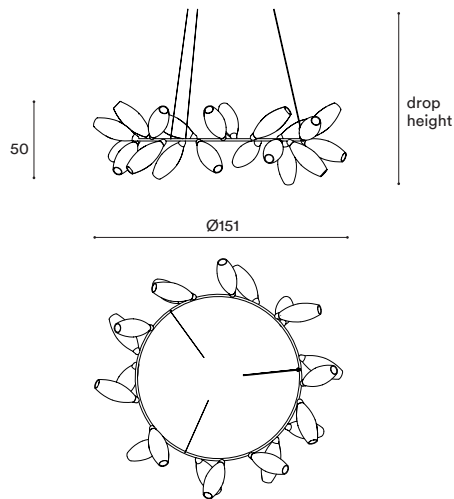
CONFIGURATION

STEP 1 - CHOOSE YOUR SIZE

SIZE (UNIT: CM)



RING 20



RING 20 SMALL

STEP 2 - CHOOSE YOUR METAL FINISH

METAL FINISH



BRUSHED BRASS



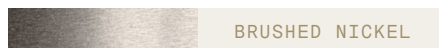
BLACKENED BRASS



POLISHED NICKEL



BRUSHED BRONZE



BRUSHED NICKEL

STEP 3 - CHOOSE YOUR GLASS FINISH

GLASS



CORRODED



MIST

Steel Wire and Flex Cable
Suspension, adjustable on site.

Available options:

4M

10M

+ STANDARD BUILTIN PHASECUT DRIVER

A. We provide a D300 canopy with a builtin LED driver with **phasecut dimming** as standard.

D300 | Ø30 X 5CM



MATCHING FINISH

PHASECUT

+ OTHER BUILTIN DRIVERS AVAILABLE ON REQUEST

B. We can also provide builtin LED drivers with **1-10 Volt, Switch / Push or DALI** dimming, if required by your electrician.

D300 | Ø30 X 5CM



MATCHING FINISH

1 - 10 VOLT

SWITCH/PUSH

DALI

+ REMOTE DRIVERS AVAILABLE ON REQUEST

B. If your electrician can wire the LED Drivers remotely (rather than builtin to the canopy) we can provide the following options:

D300 | Ø30 X 5CM



MATCHING FINISH

PHASECUT

1 - 10 VOLT

SWITCH/PUSH

DALI