

DUO

ELEMENTS



DUO
WORK

“Good design is
as little as
possible”

Dieter Rams

DUO ELEMENTS

DUO provides scalability without clutter and privacy without walls. This tidy aesthetic invites more space for productivity and creativity in the office, while the inherent stability of the system allows for maximum leg clearance and room to move around.

This AU designed, intuitive workstation provides durability, quality and locally tested rationale.



SOUTH AUSTRALIAN OWNED, DESIGNED & MADE

AURA's South Australian presence is critical to our offering and understanding of the commercial office landscape in Adelaide.

Across the industry the South Australian requirements differ from those across the country and around the world. We here our South Australian presence and connections to tailor solutions on a case by case basis.

Our local in-house design studio, ELEMENTS provides a range of core products, customised and bespoke offerings meaning we have a solution to fit every need.

For our locally designed and produced product we are not contained by ownership of a specific manufacturing plant. Our philosophy is to outsource manufacturing to the right facility based on criteria driven by factors such what is ideal for the product, quality and location.

We call this Transferable Manufacture.

Local production allows us to work closely with our manufacturers to review the product during the manufacturing process in order to eliminate any issues prior to install. It also keeps transport costs down.

The unique pairing of AURA and ELEMENTS gives us an agile edge. Focusing on our fundamental values of sustainability, functionality, minimalism in design and componentry our product is non-polarising yet sleek. We offer timeless, quality and durable product to the South Australian commercial office space.

SUSTAINABLY FOCUSED

Sustainability is at the very core of everything we do from conception and design to production. In short, ELEMENTS sustainable offering can be seen predominantly in the following facets:

MINIMAL DESIGN, LESS IS BETTER

Every part of our workstations has a function, most components are multifunctional - eliminating unnecessary parts.

RECYCLABILITY

Utilising single materials wherever possible and focusing our attention towards recyclable materials is at the forefront of our design.

PARTNERING WITH SUSTAINABLE SUPPLIERS

Working with likeminded companies is not negotiable. Every supplier we partner with such as LINAK and Elsafe are renowned for their environmentally conscious offering.

CREATING DURABLE PRODUCTS THAT WILL STAND THE TEST OF TIME

Lifecycle is such a critical factor in sustainability, our 10 year warranty is beneficial not just from a value for money perspective but also in consideration for that products impact on the world.

DUO

DOUBLE

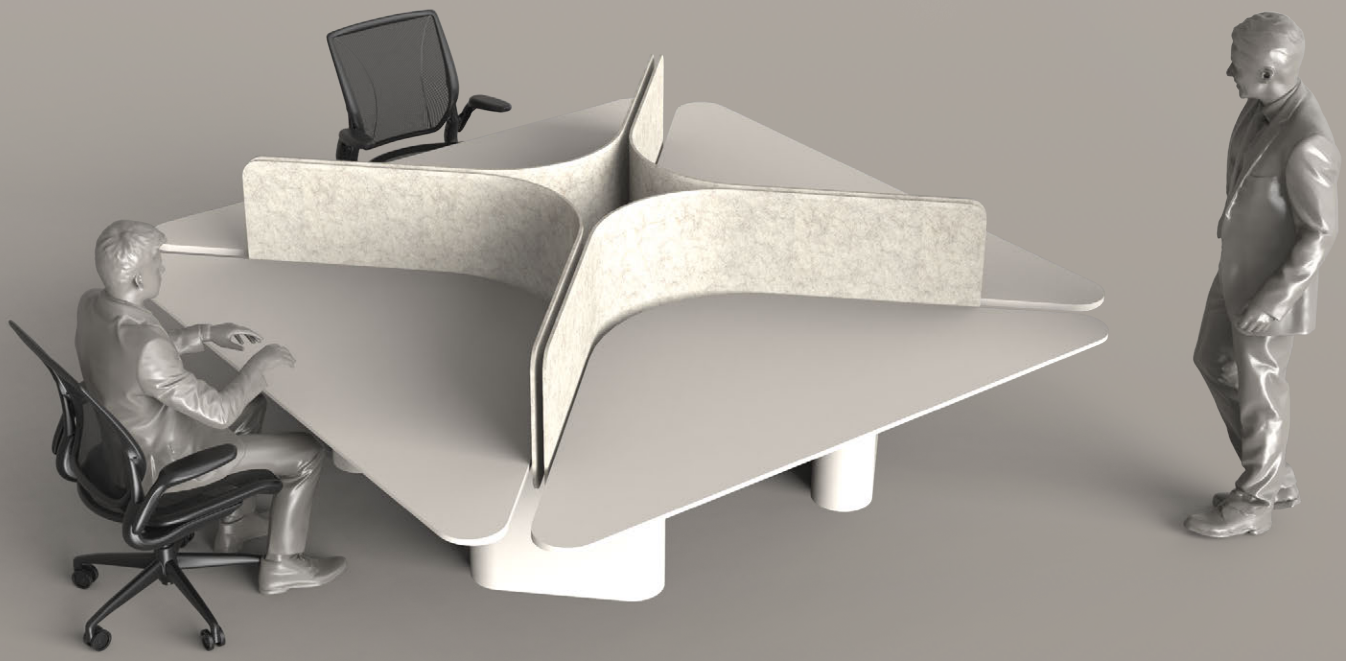


DUO

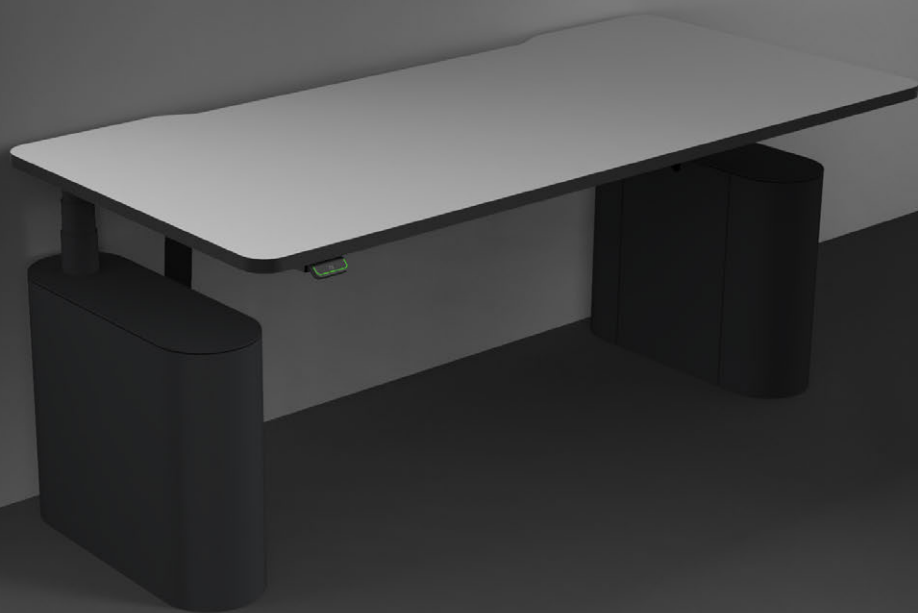
END



DUO
QUAD



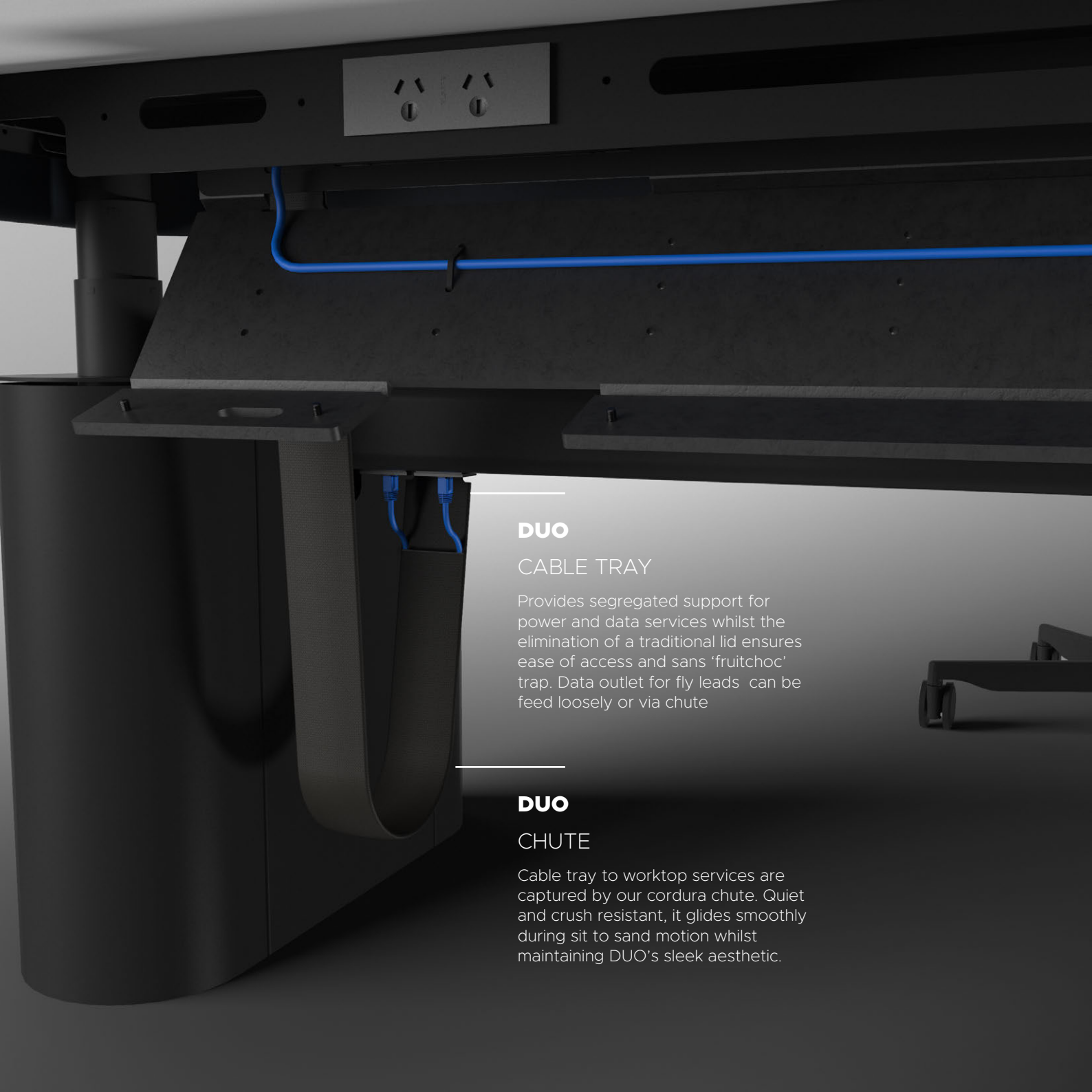
DUO
SINGLE



DUO

With upholstered U screen





DUO

CABLE TRAY

Provides segregated support for power and data services whilst the elimination of a traditional lid ensures ease of access and sans 'fruitchoc' trap. Data outlet for fly leads can be feed loosely or via chute

DUO

CHUTE

Cable tray to worktop services are captured by our cordura chute. Quiet and crush resistant, it glides smoothly during sit to stand motion whilst maintaining DUO's sleek aesthetic.



DUO

BEAM

Ideal for intensive IT services; DUO provides ample cable and technology storage. Through an easily accessible PET cover, Wiring and hardware can be neatly fixed in position.

DUO & PORT

PORT provides services at the table top level. Fully modular and expandable. Our core offer is anodised aluminium, machined from solid billet. Premium materials such as brass, titanium, even oak are available upon request.



DUO

ACCESSORIES





DUO

&

SOFT

Designed to integrate seamlessly, SOFT is a sleek mobile storage system that ensures clean lines and table tops throughout the office.

DUO FINISHES

Texture black

Texture warm grey

Texture white

Custom colours available (MOQ apply)



DUO

MOTIVATION

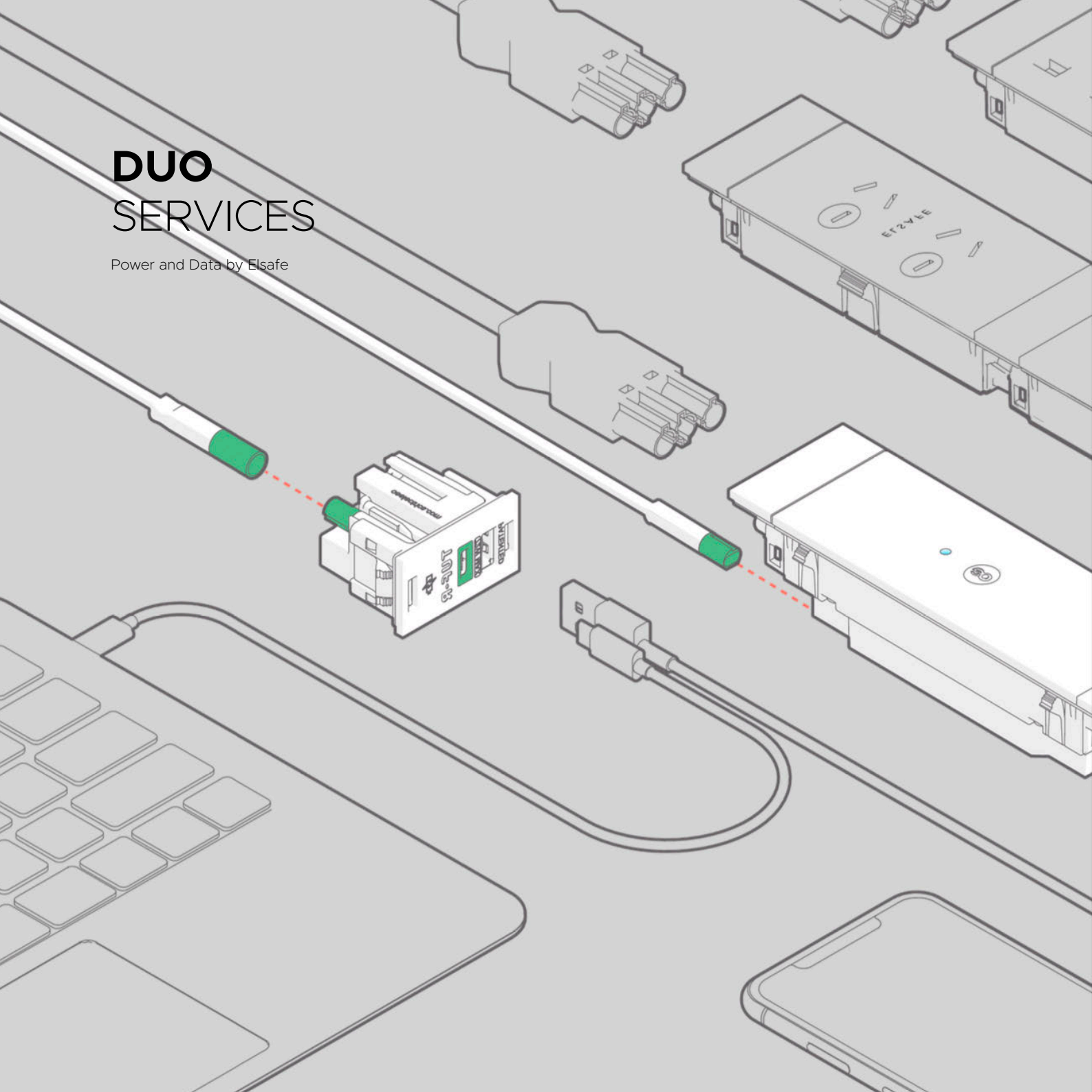
Actuator system by Linak.

World Leaders.
Intuitive Controls.
Bluetooth Connectivity.
Anti-Collision.



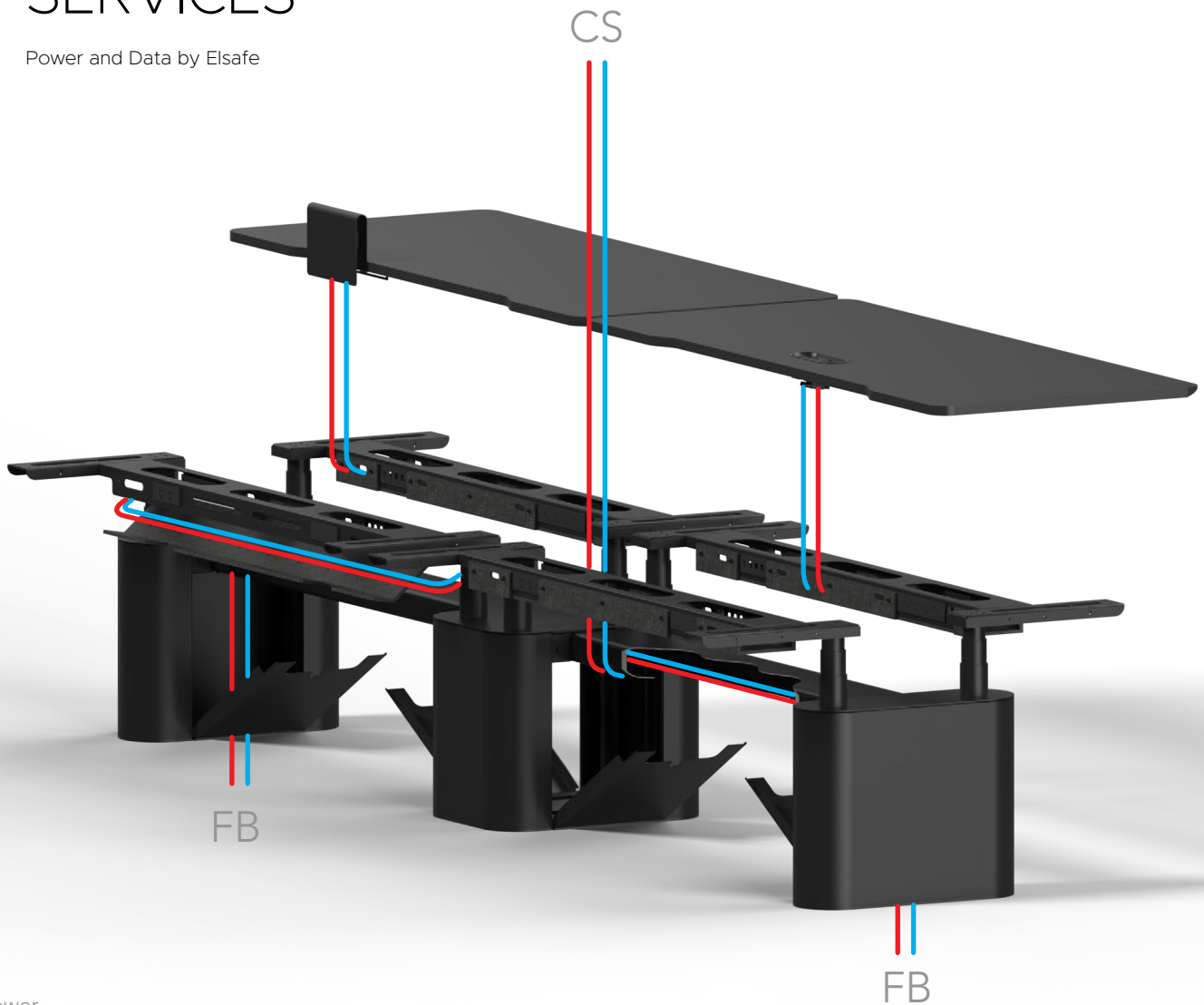
DUO SERVICES

Power and Data by Elsafe



DUO SERVICES

Power and Data by Elsafe



—: Power
—: Data
FB: Floor Box
CS: Ceiling Services

DUO WORK

SPECIFICATIONS

WARRANTY

10 years limited

ORIGIN

Australian Made with High South Australian content, Designed in South Australia

HEIGHT

DYNAMIC: 620 – 1250mm electronic sit/stand

PERFORMANCE

14 second sit to stand unloaded

140kg

MOTIVATION

Linak

SERVICES

Standard: Elsafe double gpo/double usb above,
quad gpo/quad data below- Other on request

SCREENS

28mm frameless upholstered. Preferred textiles, Woven Image Global & At Work Synergy
24mm PET

CONFIGURATIONS

SINGLE 1800w

DOUBLE 1800w

END

QUAD overall ϕ 2400mm - MOQ may apply

FINISHES

Tops: Client specification

Legs/frame: texture white, texture black, texture warm grey. Custom - MOQ apply

Chutes: Black cordura

BLUETOOTH CONNECTIVITY

Mobile Bluetooth user control

Laptop control

Facility Management Monitoring

SAFETY

Anti collision - hard and soft objects

CERTIFICATES

Surpasses AFARDI BLUE TICK

Surpasses Australian/New Zealand Standard AS/NZS 4442

GECA

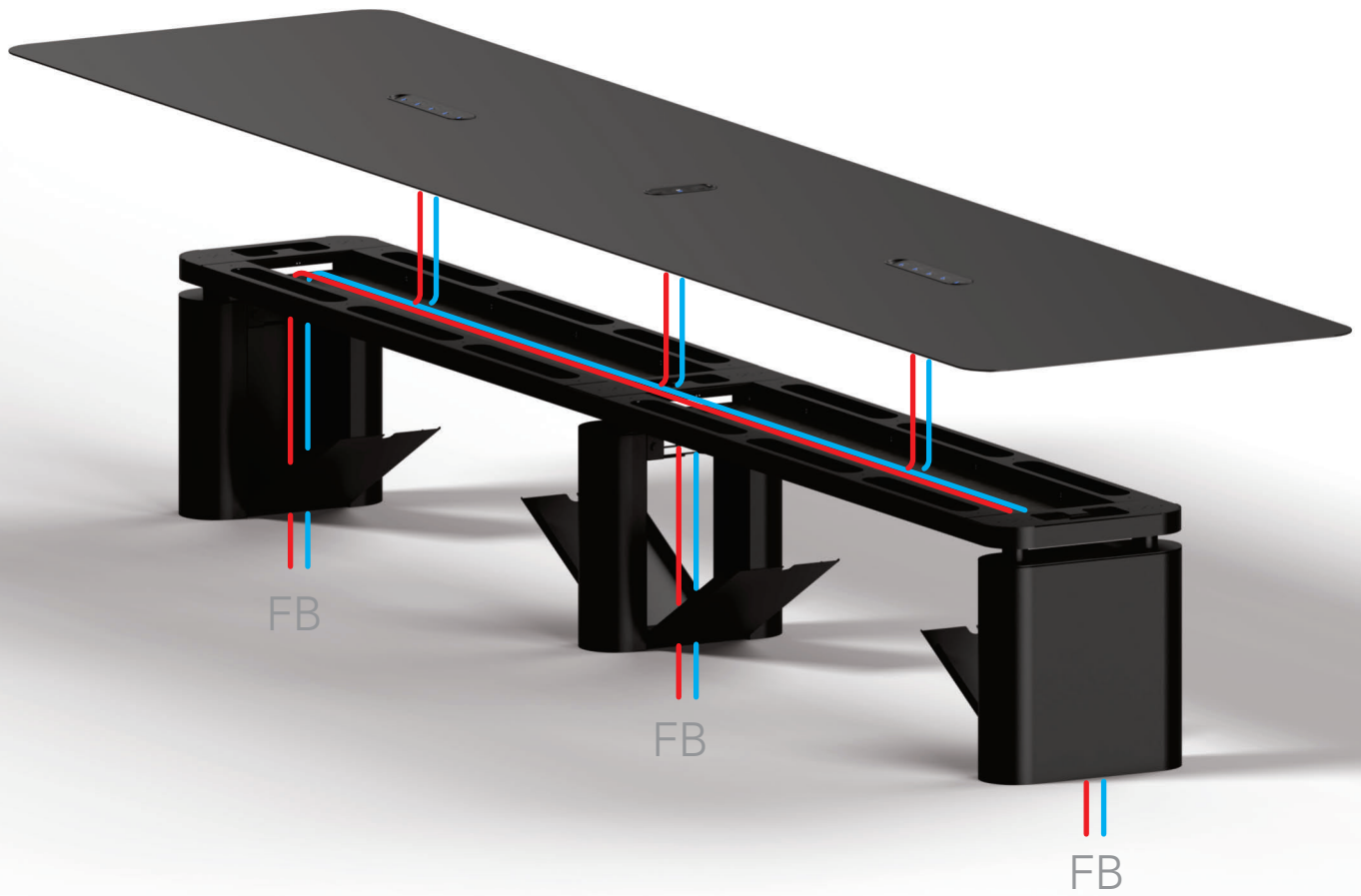
DUO
MEET





DUO SERVICES

Power and Data by Elsafe

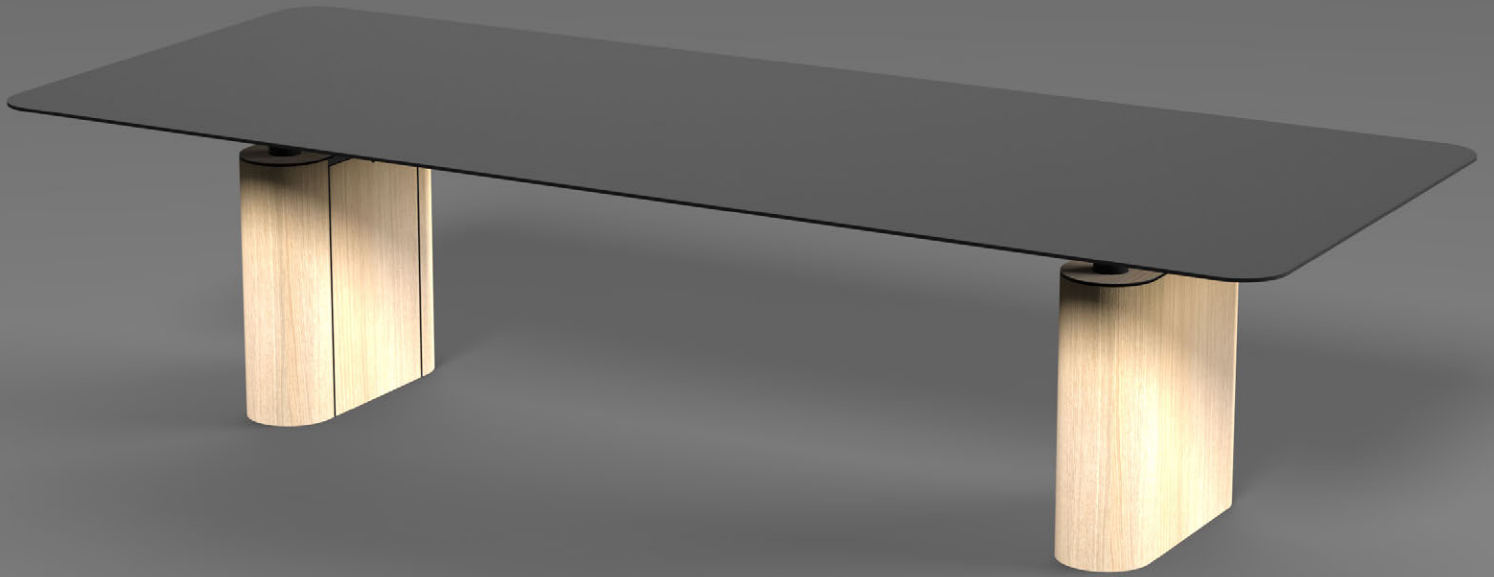


- : Power
- : Data
- FB: Floor Box
- CS: Ceiling Services

DUO
MEET
WOOD







DUO

An ELEMENTS system designed and developed in-house.

AGENTS:

New South Wales: DISTRICT sydney@district.com.au www.district.com.au

South Australia: AURA info@auraobjects.com www.auraobjects.com

Victoria: DISTRICT melbourne@district.com.au www.district.com.au

Western Australia: DISTRICT perth@district.com.au www.district.com.au