

indoor

Grada indoor

Round coffee table / centro redondo

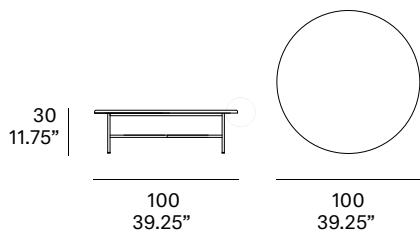
Lievore Altherr Molina, 2017

T916



Structure made of stainless steel tube, finished with polyester powder. Tabletop made of solid wood from European oaks with 22 mm/0.86" of section or natural stone. The collection is also available in a lacquered version (MDF) and in European oak plywood.

Estructura fabricada en tubo de acero inoxidable, con acabado en pintura de polvo de poliéster. Opciones de tablero: fabricado en madera maciza de roble europeo de 22 mm de sección o en piedra natural. La colección está también disponible en versión lacada (MDF) y en tablero contrachapado de roble europeo.



Shipment details

| | |
|--------|--------------------------|
| Qty | 1 coffee table (2 boxes) |
| Volume | 0,22 m3 / 7.8 ft3 |

Solid wood, veneered and lacquered top option

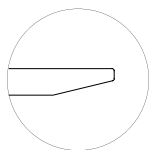
| | |
|--------------|---------------|
| Gross weight | 17 kg / 37 lb |
| Net weight | 13 kg / 29 lb |

Marble top option

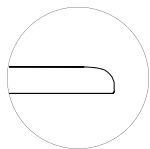
| | |
|--------------|----------------|
| Gross weight | 67 kg / 148 lb |
| Net weight | 59 kg / 130 lb |

| | |
|---|---|
| Item dimensions (width x depth x height) | 100 x 100 x 30 cm 39.25" x 39.25" x 11.75" |
|---|---|

Tabletop:



- Solid wood, veneered, lacquered
22 mm/0.86" thick.



- Marble 20 mm/0.79" thick

expormim

Expormim S.A.
Pol. Ind. Jaime I
46640 Mogente (Valencia) Spain
+34 962 295 144/5
export@expormim.com
www.expormim.com

Expormim USA LLC
(212) 204-8572
usa@expormim.com
www.expormim.com

1/3

Tabletop / tapa mesa

solid wood / madera maciza



water varnished



white stained



grey stained



black stained

veneered / tablero chapado



water varnished



white stained

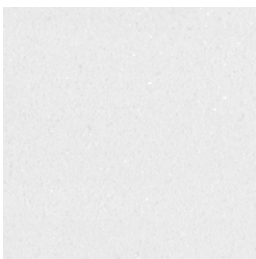


grey stained

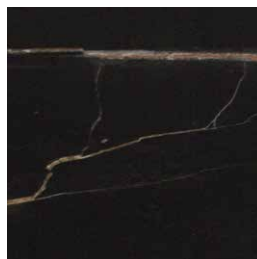


black stained

marble / mármol



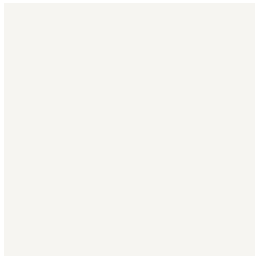
Macael



Calatorao

Tabletop / tapa mesa

lacquer finishes / lacados



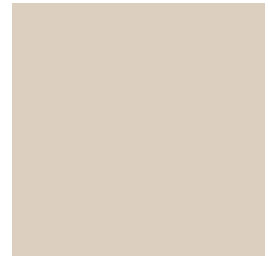
L1 white



L18 light grey



L19 black



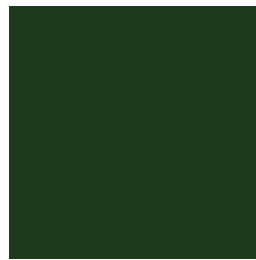
L3 creme



L5 taupe



L12 trumpet yellow



L17 forest green



L16 navy blue



L14 japanese red

Frame / estructura

metallic finishes / metales



100 FT White
fine textured



101 FT Black
fine textured



108 FT oxide
fine textured