

indoor

Grada indoor

Side table / centro rincón

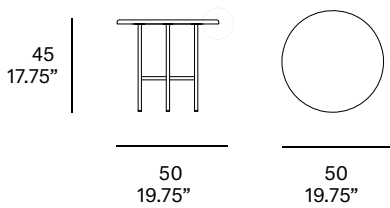
Lievore Altherr Molina, 2017

T918



Structure made of stainless steel tube, finished with polyester powder. Tabletop made of solid wood from European oaks with 22 mm/0.86" of section or natural stone. The collection is also available in a lacquered version (MDF) and in European oak plywood.

Estructura fabricada en tubo de acero inoxidable, con acabado en pintura de polvo de poliéster. Opciones de tablero: fabricado en madera maciza de roble europeo de 22 mm de sección o en piedra natural. La colección está también disponible en versión lacada (MDF) y en tablero contrachapado de roble europeo.



Shipment details

Qty	1 coffee table (1 boxes)
Volume	0,15 m3 / 5.3 ft3

Solid wood, veneered and lacquered top option

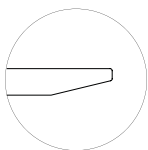
Gross weight	7 kg / 15 lb
Net weight	5 kg / 11 lb

Marble top option

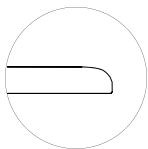
Gross weight	12 kg / 26 lb
Net weight	9 kg / 20 lb

Item dimensions (width x depth x height)	50 x 50 x 45 cm 19.75" x 19.75" x 17.75"
---	---

Tabletop:



- Solid wood, veneered, lacquered
22 mm/0.86" thick.



- Marble 20 mm/0.79" thick

expormim

Expormim S.A.
Pol. Ind. Jaime I
46640 Mogente (Valencia) Spain
+34 962 295 144/5
export@expormim.com
www.expormim.com

Expormim USA LLC
(212) 204-8572
usa@expormim.com
www.expormim.com

1/3

Tabletop / tapa mesa

solid wood / madera maciza



water varnished



white stained



grey stained



black stained

veneered / tablero chapado



water varnished



white stained

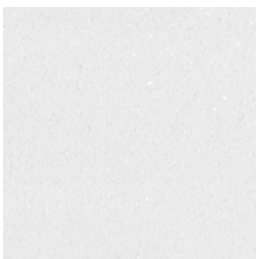


grey stained

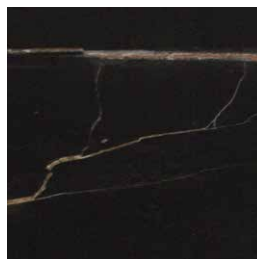


black stained

marble / mármol



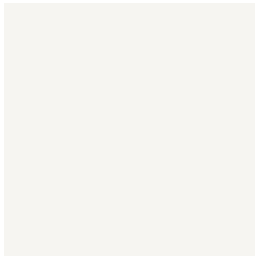
Macael



Calatorao

Tabletop / tapa mesa

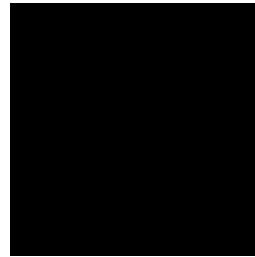
lacquer finishes / lacados



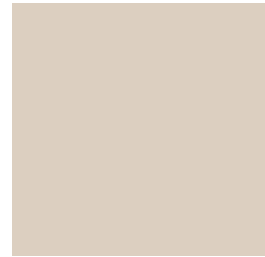
L1 white



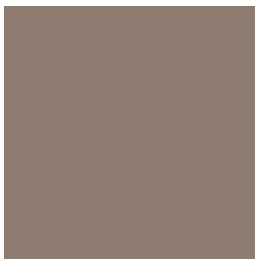
L18 light grey



L19 black



L3 creme



L5 taupe



L12 trumpet yellow



L17 forest green



L16 navy blue



L14 japanese red

Frame / estructura

metallic finishes / metales



100 FT White
fine textured



101 FT Black
fine textured



108 FT oxide
fine textured