

# GANDIABLASCO

ONSEN BY FRANCESCO MEDA & DAVID QUINCOES

COLOUR SAMPLE BOOK

WHITE



NÁUTICA Silvertex Ice



NÁUTICA Gemini Blanco



SOFT Atlas Plain 07

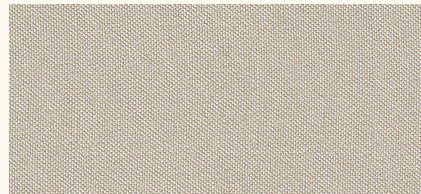


WARM Patio 200



SOFT Dolce Crudo 07

SAND



NÁUTICA Silvertex Sandstone



SOFT Atlas Plain 14



SOFT Duo Beige 04

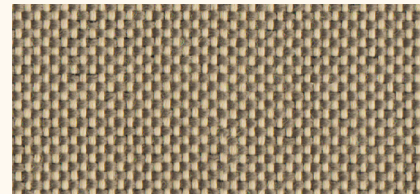


WARM Bora Bora 08



WARM Bora Bora 05

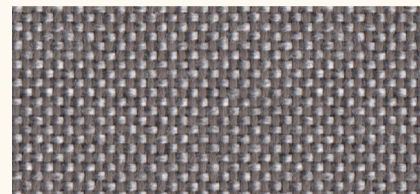
BROWN



SOFT Dolce Marrón 09



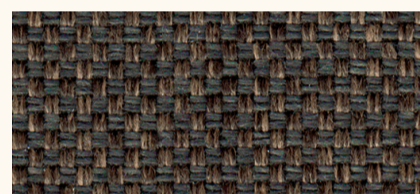
NÁUTICA Gemini Bronce



SOFT Dolce Marrón 18



SOFT Atlas Plain 2F



SOFT Duo Marrón 14

CINCHA. WEBBING

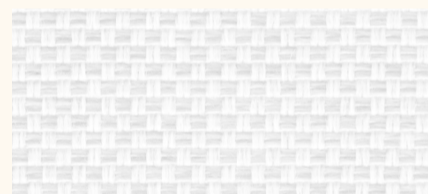


Ochre

ESTRUCTURA. FRAME



Acero inoxidable AISI 316L satinado.  
Satin AISI 316L stainless steel



SOFT Duo Crudo 07

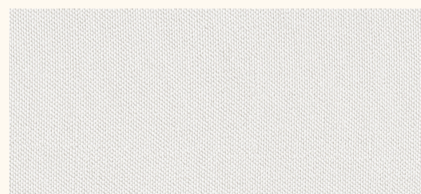


SOFT Atlas Plain 06

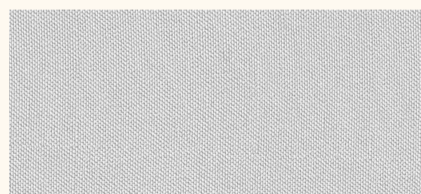


WARM Bora Bora 99

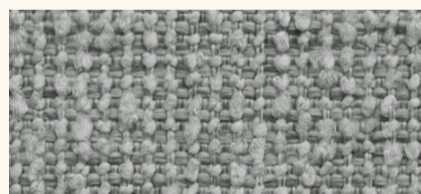
GREY



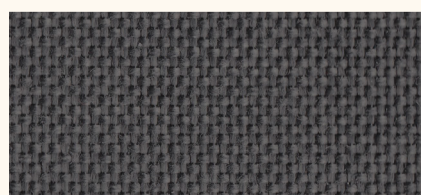
NÁUTICA Silvertex Aluminum



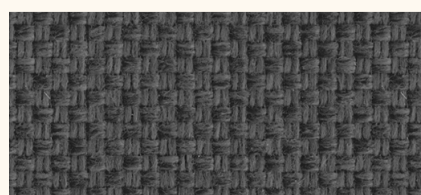
NÁUTICA Silvertex Plata



SOFT Atlas Plain 2E

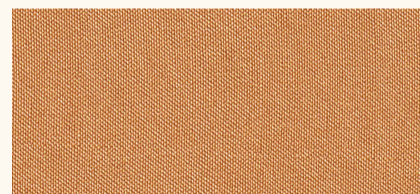


SOFT Dolce Gris Oscuro 53

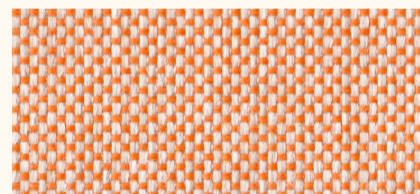


SOFT Duo Gris Oscuro 53

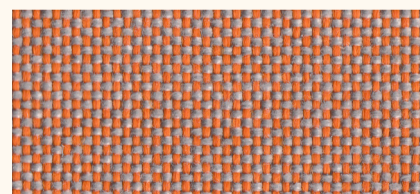
ORANGE



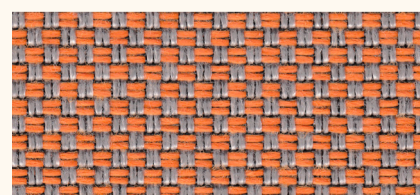
NÁUTICA Silvertex Cobre



SOFT Dolce Mandarín 29



SOFT Dolce Naranja 24



SOFT Duo Naranja 24

RIBETES. PIPING

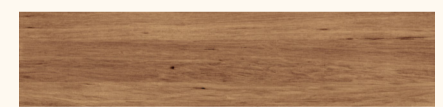


SOFT Solids Carbon

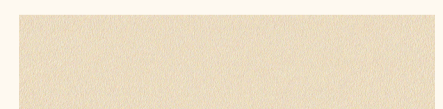


SOFT Agora Liso Café

SOBRE MESAS. TABLE TOPS



Iroko. Iroko



Lacado. Lacquered  
white, agate grey, sand, bronze, wine red,  
blue grey, grey blue, anthracite, bottle green,  
cement grey, quartz grey, black

COMBINACIONES. COMBINATIONS

SOFT Agora Liso Café: white, sand, brown, orange  
SOFT Solids Carbon: white, grey

\*La representación de los colores puede variar de la realidad.  
\*The color visualization may differ from reality.

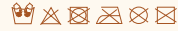
# ESPECIFICACIONES TÉCNICAS. TECHNICAL SPECIFICATIONS

## CINCHA. WEBBING

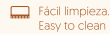
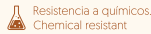
### Ochre

Composición. Composition  
Refuerzo. Backing  
Peso. Weight

Abrasión Martindale. Abrasion resistance  
Solidez colores a la luz. Colours lightfastness  
Resistencia al fuego. Flame resistance



Capa superior. Vinilo. Topcoat: Vinyl  
100% PES Hi-Loft™  
657 gr/m<sup>2</sup>  
>100.000 ciclos/cycles  
ISO 105 B04 · ≥4-5 [scale 1-5]  
UNE 1021 parts 1 - 2 · IMO 2010 FTP Part 8  
CAL TB 117 · NFPA-260 class 1 · DIN 4102 B1



## RIBETES. PIPING

### SOFT Solids Carbon

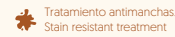
Composición. Composition

Peso. Weight  
Abrasión Martindale. Abrasion resistance  
Solidez colores a la luz. Colours lightfastness  
Resistencia al fuego. Flame resistance



100% acrílico teñido en masa  
100% solution dyed acrylic

270 gr/m<sup>2</sup>  
15.000 - 25.000 ciclos/cycles  
ISO 105 B04 · 7-8 [scale 1-8]  
CAL TB 117 · NFPA-260 class 1



### SOFT Agora Liso Café

Composición. Composition

Peso. Weight  
Abrasión Martindale. Abrasion resistance  
Solidez colores a la luz. Colours lightfastness  
Resistencia al fuego. Flame resistance



100% acrílico teñido en masa.  
100% solution dyed acrylic

260 gr/m<sup>2</sup>  
15.000 ciclos/cycles  
ISO 105 B04 · 7-8 [scale 1-8]  
CAL TB 117 · NFPA-260 class 1



## TELAS. FABRICS

### WARM

#### Patio

Composición. Composition  
Peso. Weight

Abrasión Martindale. Abrasion resistance  
Solidez colores a la luz. Colours lightfastness  
Resistencia al fuego. Flame resistance



100% Trevira CS  
560 gr/m<sup>2</sup>  
50.000 ciclos/cycles  
ISO 105 B04 · 6-7 [scale 1-8]  
BS 5852 Crib 5 · BS 5852 part 1 ignition source 0  
DIN 4102 B1 · UNI 9175 IIM · CAL TB 117  
UNE 1021 parts 1 - 2 · IMO FTP Code 2010 Part 8



### NÁUTICA

#### Gemini

Composición. Composition  
Peso. Weight

Abrasión Martindale. Abrasion resistance  
Solidez colores a la luz. Colours lightfastness  
Resistencia al fuego. Flame resistance



90% vinilo/vinyl + 10% PES  
660 gr/m<sup>2</sup>  
150.000 ciclos/cycles  
ISO 105 B02 · ≥6 [scale 1-8]  
UNE 1021 parts 1 - 2 · UNE 23727-90 M2  
CAL TB 117 · NFPA-260 class 1 · IMO A-652



### SOFT

#### Duo / Dolce

Composición. Composition  
Peso. Weight

Abrasión Martindale. Abrasion resistance  
Solidez colores a la luz. Colours lightfastness  
Resistencia al fuego. Flame resistance



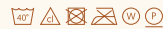
60% PP + 40% PES  
371 gr/m<sup>2</sup>  
60.000 ciclos/cycles  
ISO 105 B04 · ≥6 [scale 1-8]  
UNE 1021 part 1 · BS5852 source 0  
CAL TB 117 · NFPA-260 class 1



#### Bora Bora

Composición. Composition  
Peso. Weight

Abrasión Martindale. Abrasion resistance  
Solidez colores a la luz. Colours lightfastness  
Resistencia al fuego. Flame resistance



82% PP + 18% PES  
750 gr/m<sup>2</sup>  
>100.000 ciclos/cycles  
ISO 105 B04 · ≥6 [scale 1-8]  
UNE 1021 parts 1 - 2 · BS5852 sources 0 - 1  
CAL TB 117 · NFPA-260 class 1 · IMO A-652



#### Silvertex

Composición. Composition  
Peso. Weight

Abrasión Martindale. Abrasion resistance  
Solidez colores a la luz. Colours lightfastness  
Resistencia al fuego. Flame resistance



100% vinilo/vinyl + Base 100% PES Hi-Loft  
683 gr/m<sup>2</sup>  
>100.000 ciclos/cycles  
ISO 105 B02 · ≥7 [scale 1-8]  
UNE 1021 parts 1 - 2 · BS5852 sources 0 - 1  
CAL TB 117 · NFPA-260 class 1 · IMO A-652  
UNE 23727-90 M2



#### Atlas Plain

Composición. Composition  
Peso. Weight

Abrasión Martindale. Abrasion resistance  
Solidez colores a la luz. Colours lightfastness  
Resistencia al fuego. Flame resistance



100% PES  
596 gr/m<sup>2</sup>  
100.000 ciclos/cycles  
ISO 105 B02 · 7 [scale 1-8]  
CAL TB 117

