

Finis  
h  
es

**lapalma**

OUTDOOR

# Finishes

Lapalma srl si riserva il diritto di apportare modifiche tecniche e dimensionali e di introdurre miglioramenti che potrebbero cambiare l'estetica dei prodotti presentati in catalogo. I riferimenti colore stampati non sono vincolanti.

Lapalma srl reserves the right to alter the technical and dimensional specifications given in this publication and to introduce improvements that may change the aesthetics of the products shown in this catalogue. The printed colours hues are not binding.

Lapalma srl behält sich das Recht vor, jederzeit Veränderungen an den technischen Details und den Dimensionen der Produkte vorzunehmen und Verbesserungen einzuführen, die die Ästhetik der Produkte verändern können. Die Farbtöne der Abbildungen können von den tatsächlichen Farben der Produkte abweichen.

Lapalma srl se réserve le droit d'apporter des modifications techniques et de dimensions ainsi que d'introduire des améliorations qui peuvent changer l'esthétique des produits présentés. Les tonalités imprimées n'engagent pas la société.

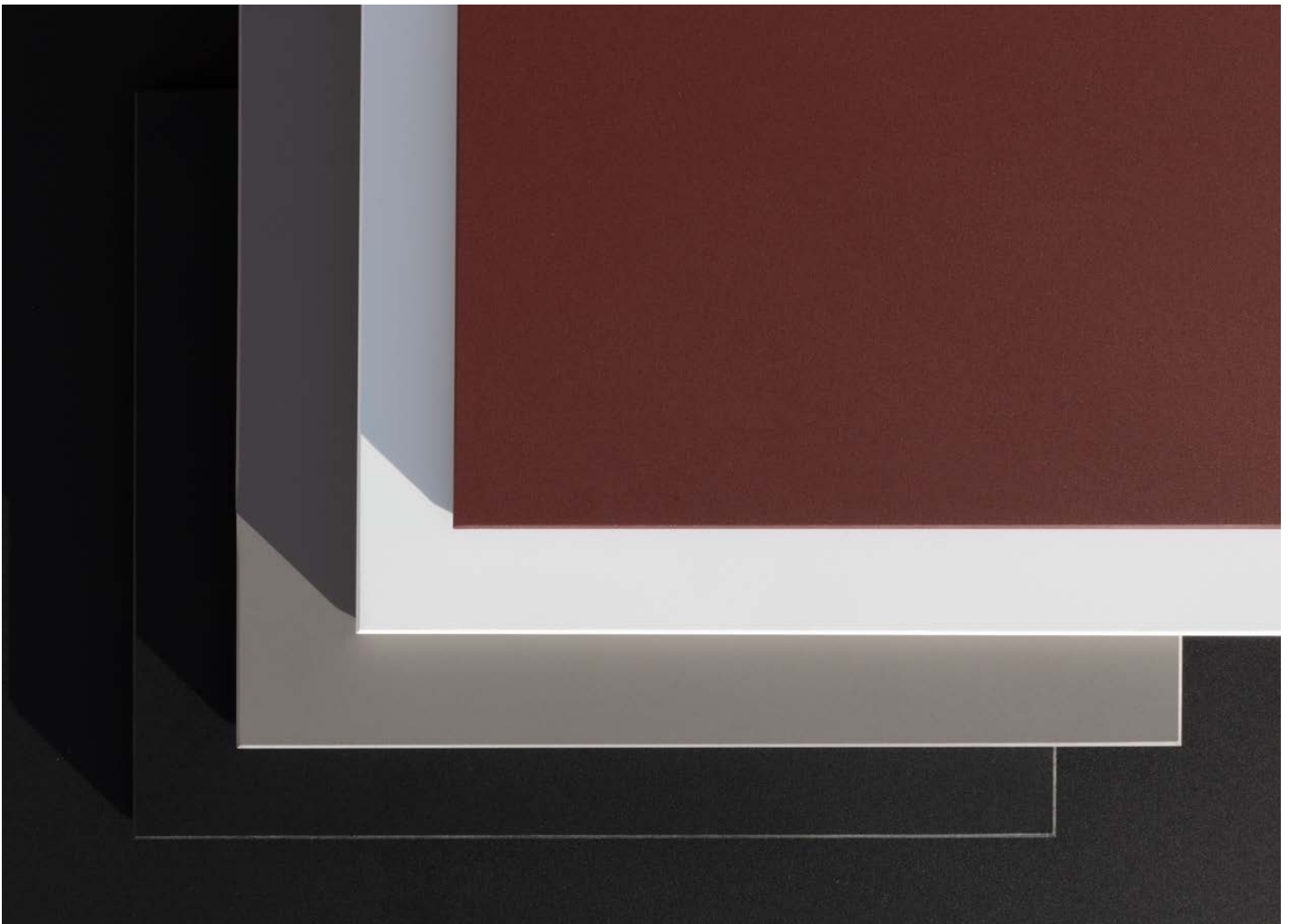
Lapalma srl se reserva el derecho de cambiar tamaños y especificaciones técnicas de los productos listados en esta publicación, así como el de introducir mejoras que puedan cambiar la estética de los mismos. Por favor tengan en cuenta que los colores de los tejidos mostrados en fotografía no son totalmente fidedignos.

# FENIX®

FENIX®

Fenix® is an extremely pleasant material ideal for all tops thanks to its contemporary rigour and simplicity. It is resistant, soft to the touch, fingerprint proof and slightly opaque, a characteristic that allows it to absorb light and make the time we spend at our tables even more enjoyable.

Fenix® is made of 70% layers of paper. The inner layers are hardened with thermosetting resins, the outer ones with latest generation acrylic resins. Heat and pressure compact the multilayer structure and make it the protagonist of any outdoor space in all weather conditions.



# WOODS

**LEGNI**

Wood is the “nature” of Lapalma, with its warm, embracing and contemporary yet ancient appeal. With its deep respect for environmental balance, Lapalma selects only wood of certified origin, according to the main Chain of Custody control standards (FSC). The most widely used material for its outdoor collections is Iroko, a wood rich in tannin and therefore highly weather-resistant. Its physical and mechanical properties result in products with remarkable appeal and durability.

It comes originally in golden shades that tend to darken over time and acquire grey and brown nuances. Each product is a unique piece thanks to rich and original veining, knots and small imperfections, which confirm the natural origin of solid wood.

In outdoor environments, with much exposure to the sun and rain, Iroko wood - also called "greasy wood" due to its resistance to water and humidity - is subject to slow ageing, which can sometimes cause small cracks and fissures. It is not a defect, but proof of authentic and always exciting vitality.



# MARBLES AND CONCRETE

**MARMI E CEMENTO**

TheLapalma communicates with its classic appeal, presenting in its collections the most precious material of Italian art and architecture, marble. Resistant to weather conditions and temperature changes, and always extremely elegant, marble is available in two versions: white Carrara marble and black Maquinia marble with subtle light nuances.

Cement represents contemporary style and is used for the bases in our collections due to its extraordinary resistance to weather conditions. Each product comes from a mould and preserves the artisan charm of a unique piece. It is then fibre-reinforced, finely sandblasted and treated with the most effective additives to resist any staining agent.



# METALS

**METALLI**

In more than forty years of research, we have developed outstanding experience in high-performance metalworking, making it the hallmark of our outdoor furniture.

Steel and aluminium are the two protagonists.

To guarantee the originality of our outdoor collections we have chosen AISI 316L and AISI 304 stainless steel. Both of them fall into the category of super alloys.

Their characteristics include resistance to weather conditions and corrosive substances in any natural environment, as well as being entirely rustproof. Lapalma furniture made of AISI 316L stainless steel is also ideal for the nautical market.

Aluminium is included in our outdoor collections due to its minimalist aesthetic appeal and high resistance to water and temperature changes. The die-cast aluminium legs of our sofas are a recognisable feature of Lapalma's style.

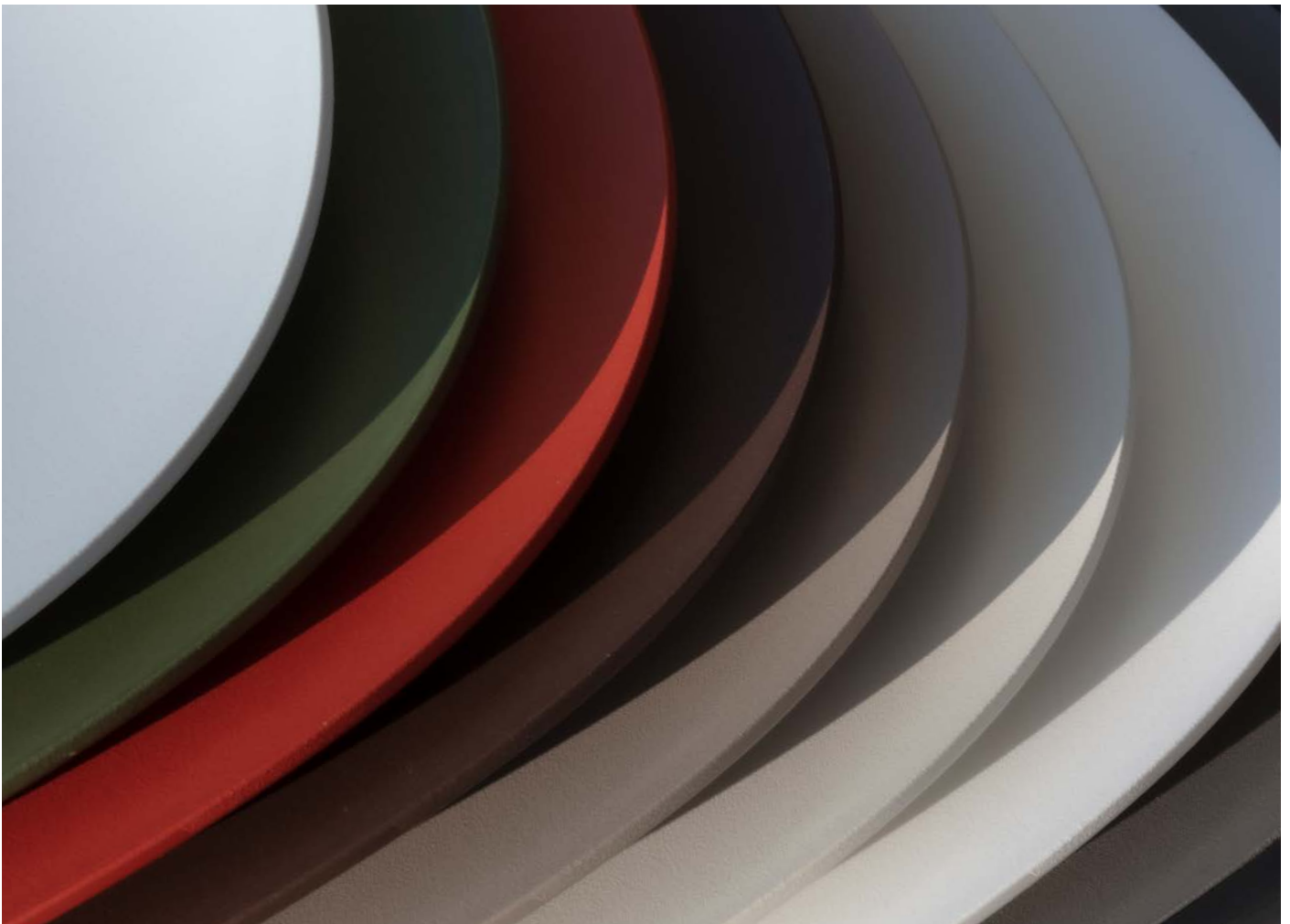
Polyester powder coating allows us to considerably extend the colour choice for metal components. The paint powder is electrostatically charged and sprayed on individual parts, which are then placed in an oven. The powder particles melt at a high temperature and create a continuous film due to coalescence. The fine-grained coating guarantees maximum resistance and is ideal for allowing our furniture to be used in all seasons of the year.



# PLASTICS

**PLASTICHE**

We use the highest quality plastics in order to accurately express the creativity of our designers. The two main materials, polypropylene and Baydur<sup>®</sup>, are both extremely easy to clean and considerably resistant even in outdoor contexts. This choice is made even more effective by additives, which allow our furniture to be easily left outdoors in all seasons with long exposure to the sun and atmospheric and chemical agents. In keeping with our commitment to the environment, we have made a collection in 75-85% recycled polypropylene, obtained thanks to the recovery of plastics. We have chosen to keep it in its original colour and not to mix it with other pigments so that it can be recycled again.



# FABRICS

TESSUTI

The aesthetic appeal of our outdoor collections is highlighted by a choice of fabrics that ensure uniqueness and comfort in all environments, from contract contexts to private homes. This tactile beauty, refined with original yarns and textures, conveys that Italian sensation of lightness and sophisticated simplicity.

The fabrics that cover padded elements by Lapalma do not require the use of glues and are tested and certified to withstand the most severe weather conditions. Their excellence is enhanced by treatments that make all fibres resistant to UV rays and mould.

Lapalma uses batch-dyed acrylic fabrics. These include Iris fabric, which deserves a special mention as it is made of 100% recycled PET from the processing of bottles. A virtuous circle is closed, even though the Iris fabric is entirely recyclable.





# WINTER SET

## WINTER SET

Lapalma furniture is like us, happy to live outdoors during the summer and to rest during the colder months. And just as our skin needs to be protected from winter temperatures and weather conditions, so outdoor furniture needs extra care in order to maintain its extraordinary comfort over the years.

Lapalma has created a collection of elegant custom-made, waterproof and extremely practical covers to protect all its products, from padded elements to chairs, stools, tables and sofas.

The covers are made of solution-dyed resin-coated polyester, which is resistant to salty sea air, UV rays and tearing.

Before covering your furniture, it is important to clean and dry it. We also recommend airing it regularly if the period of "rest" is lengthy. And when the first rays of sun and the first flowers in the garden appear, when you have your first coffee on the terrace and your first dip in the pool, we and our furniture will be together again.

Wonderful as we are!





Cat B - Iris RADA

**Application**

Contract and domestic use

**Description**

Composition:  
100% PET RECYCLED  
(made with recycled plastic bottles)

Width: 140 cm

Weight: app. 800 g/lin. m

**Application**

Abrasion  
App. 100.000 martindale rubs  
EN ISO 12947

Piling  
dry 4-5, EN ISO 12945  
wet 4, EN ISO 12945

Light fastness 7, ISO 105-B02

Flame resistance  
EN 1021- 1/2  
BS 5852, flame  
BS 5852, cigarette test  
IMO FTP8 Res.A652  
UNI 9175, class 1 I-M  
US Cal. Tech. Bull. 117.2013

Flame resistance  
According to GB/T 24279-1:2018

**Care**

Dry clean or clean with foam  
detergent

Samples are purely indicative because of natural inconsistencies that occur in the raw materials. As a result there may be small differences in the product delivered.





Cat B - Nattè SUNBRELLA

**Application**

Contract and domestic use.

**Description**

Composition:  
100% Sunbrella® Acrylic  
Width: 140 cm  
Weight: app. 385 g/lin.m

**Tests**

Water-Repellent  
Spray test ISO 4920 class 5  
Colour fastness  
UV indoor ISO105B02 class 8  
Weather outdoor ISO105B04 1000H  
Class 4-5  
Dry friction ISO105X12 Class 5

**Care**

Dry clean or clean with foam  
detergents.

Samples are purely indicative because of natural inconsistencies that occur in the raw materials. As a result there may be small differences in the product delivered.

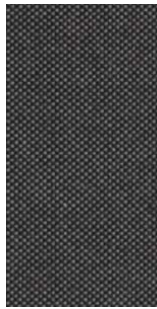




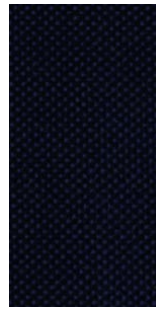
Cat B - Nattè SUNBRELLA



5073 140  
Cadey Grey



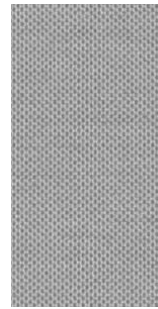
5075 140  
Charcoal



5076 140  
Marine



5077 140  
Antique



5078 140  
Stone



P048  
Clay



Cat C - Lapalma Smart

**Application**

Contract and domestic use

**Description**

Composition:  
100% SOLUTION DYED ACRILIC  
Width: 140cm  
Weight Gr./mtl.: 700

**Tests**

Shrinkage after dry cleaning  
Warp: -1 % Weft: -1 %

Shrinkage after washing  
Warp: -3 % Weft: -3 %

Resistance to PILLING  
after 2000 cycles  
Note 4 EN ISO 12945-2

Abrasion  
20000 Cicli EN ISO 12947-2

Light fastness  
Note 7/8 EN ISO105B02

Color fastness to washing  
Note 5 EN ISO105C06

Color fastness to dry Cleaning  
Note 5 EN ISO105D01

Color fastness  
to crocking Test WET  
Note 4/5 EN ISO105X12

Color fastness  
to crocking Test DRY  
Note 5 EN ISO105X12

**Care**

Cleaning: Vacuuming  
Mount in moist condition.  
Mildew growth is not promoted  
by the textile but mildew may  
grow on dirt and other foreign  
substances if not removed.  
Keep the textile dry to avoid  
mildew spores to stick.

Samples are purely indicative because of natural inconsistencies that occur in the raw materials. As a result there may be small differences in the product delivered.



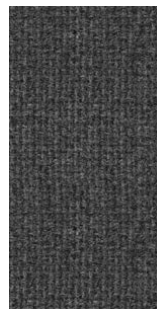
211



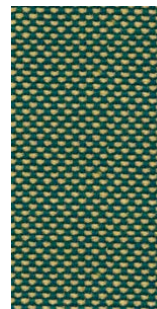
213



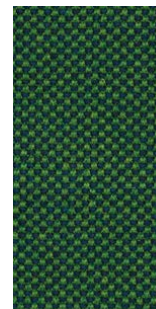
214



203



219



218



204



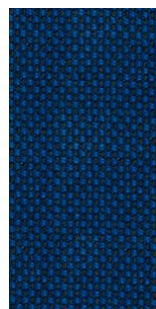
205



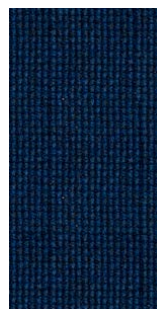
206



210



217



209



201



207



202



208



224



223

corda / cord / Schnur / corde / cuerda

legno / wood / Holz / bois / mader



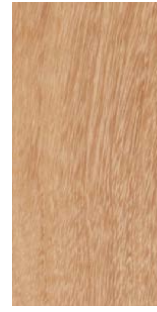
F5  
lino



F8  
tabacco

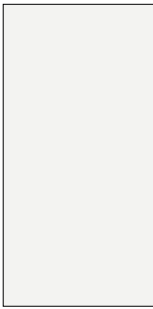


F1  
nero



RK  
Iroko

HPL 10 mm



HFW  
Fenix® bianco  
Fenix® white  
Fenix® weiß  
Fenix® blanc  
Fenix® blanco



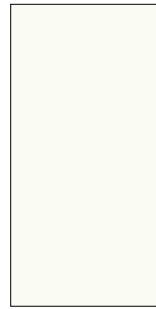
HFN  
Fenix® nero  
Fenix® black  
Fenix® schwarz  
Fenix® noir  
Fenix® negro



HFG  
Fenix® grigio  
Londra

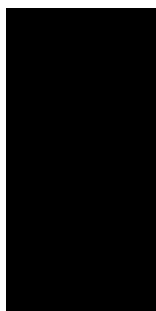


HFR  
Fenix® rosso  
Jaipur



H406  
bianco  
white  
Weiß  
blanc  
blanco

verniciature a polvere / powder coating / pulverlackiert / laqué en poudre / lacadura en polvo



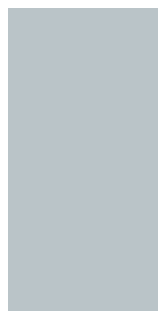
05  
nero  
RAL 9005



03  
bianco  
RAL 9016



20  
perla  
NCS 1502Y



21  
celeste  
NCS 2010-B10G



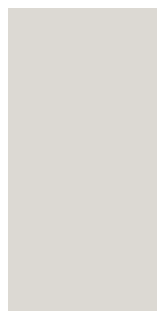
22  
mattone  
NCS 3560-Y70R



23  
caffè  
NCS 8010-Y50R



24  
oliva  
NCS 7020-G50Y



25  
tortora  
402C



26  
antracite  
finitura gofrata

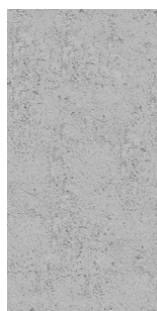
altre finiture / other finishes / weitere Ausführungen / autres finitions / otros acabados



bianco Carrara  
white Carrara  
Carrara-Marmor  
blanc Carrara  
blanco Carrara

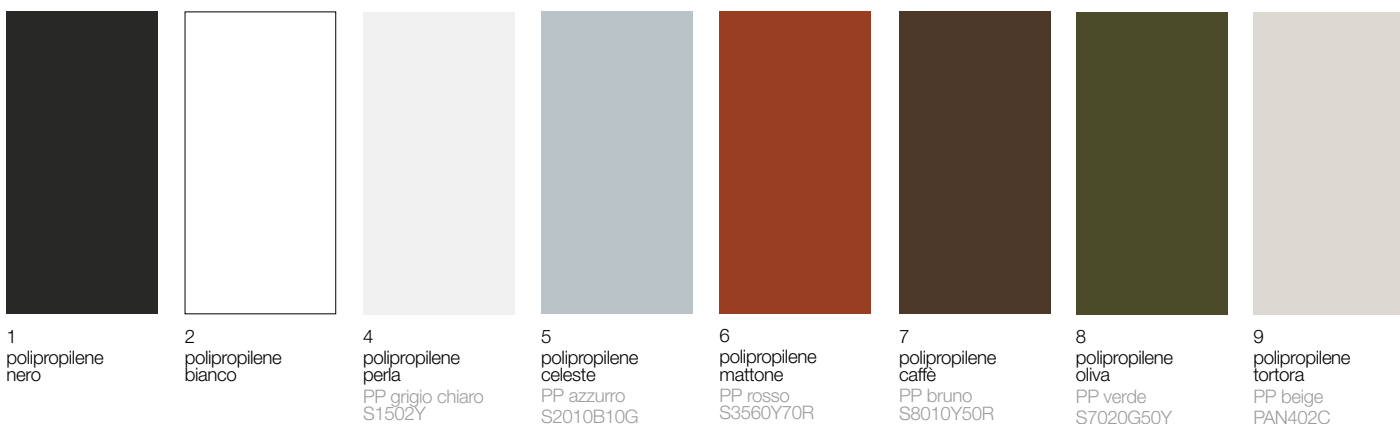


nero Marquina  
black Marquina  
Marquina-Marmor  
noir Marquina  
negro Marquina



cemento  
concrete  
Zement  
béton  
cemento

## plastiche / plastics / Kunststoff / plastiques / plástica



1  
polipropilene  
nero

2  
polipropilene  
bianco

4  
polipropilene  
perla  
PP grigio chiaro  
S1502Y

5  
polipropilene  
celeste  
PP azzurro  
S2010B10G

6  
polipropilene  
mattone  
PP rosso  
S3560Y70R

7  
polipropilene  
caffè  
PP bruno  
S8010Y50R

8  
polipropilene  
oliva  
PP verde  
S7020G50Y

9  
polipropilene  
tortora  
PP beige  
PAN402C



3  
polipropilene grigio  
riciclato

### Application

Indoor and outdoor use.

### Description

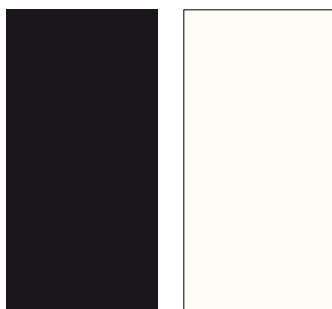
Recycled polypropylene is obtained thanks to a recycling process using up to 75% - 95% of recycled material.

### Care

Dust with a soft and dry cloth for the normal cleaning. Never use abrasive or aggressive products like solvents, acid or basic solutions or ammonia. Any liquid spilt on the product must be wiped up immediately. Any changes in the surface and in colours may occur under particular conditions of weather exposure and cannot be considered a quality issue.

Samples are purely indicative because recycled polypropylene color can vary widely from grey to a lighter color.

## Baydur®



N  
Baydur® nero  
Baydur® black  
Baydur® schwarz  
Baydur® noir  
Baydur® negro

W  
Baydur® bianco  
Baydur® white  
Baydur® weiß  
Baydur® blanc  
Baydur® blanco

## poliuretano integrale morbido / polyurethane / Polyurethan / polyuréthane / poliuretano



PU  
poliuretano grigio  
polyurethane grey  
Polyurethan grau  
polyuréthane gris  
poliuretano gris

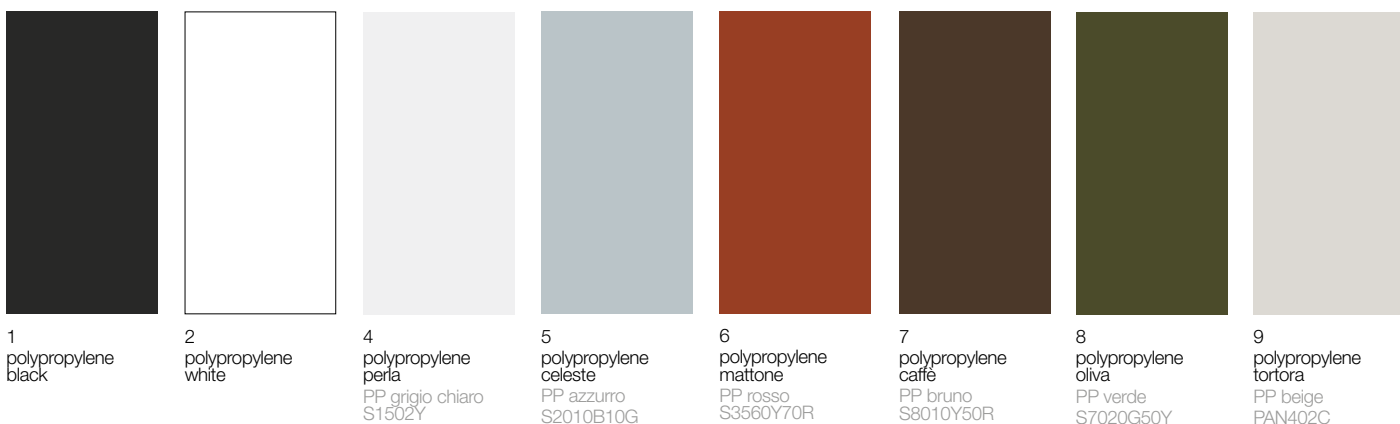
PN  
poliuretano nero  
polyurethane black  
Polyurethan  
schwarz  
polyuréthane noir  
poliuretano negro



# **lapalma**

via majorana 26  
35010 cadoneghe (PD), italy  
t.: +39 049 702788  
[info@lapalma.it](mailto:info@lapalma.it)  
[www.lapalma.it](http://www.lapalma.it)

## plastiche / plastics / Kunststoff / plastiques / plástica



1  
polypropylene  
black

2  
polypropylene  
white

4  
polypropylene  
perla  
PP grigio chiaro  
S1502Y

5  
polypropylene  
celeste  
PP azzurro  
S2010B10G

6  
polypropylene  
mattone  
PP rosso  
S3560Y70R

7  
polypropylene  
caffè  
PP bruno  
S8010Y50R

8  
polypropylene  
oliva  
PP verde  
S7020G50Y

9  
polypropylene  
tortora  
PP beige  
PAN402C



3  
recycled grey  
polypropylene

### Application

Indoor and outdoor use.

### Description

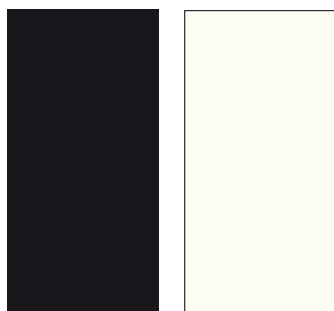
Recycled polypropylene is obtained thanks to a recycling process using up to 75% - 95% of recycled material.

### Care

Dust with a soft and dry cloth for the normal cleaning. Never use abrasive or aggressive products like solvents, acid or basic solutions or ammonia. Any liquid spilt on the product must be wiped up immediately. Any changes in the surface and in colours may occur under particular conditions of weather exposure and cannot be considered a quality issue.

Samples are purely indicative because recycled polypropylene color can vary widely from grey to a lighter color.

## Baydur®



N  
Baydur® nero  
Baydur® black  
Baydur® schwarz  
Baydur® noir  
Baydur® negro

W  
Baydur® bianco  
Baydur® white  
Baydur® weiß  
Baydur® blanc  
Baydur® blanco

## poliuretano integrale morbido / polyurethane / Polyurethan / polyuréthane / poliuretano



PU  
poliuretano grigio  
polyurethane grey  
Polyurethan grau  
polyuréthane gris  
poliuretano gris

PN  
poliuretano nero  
polyurethane black  
Polyurethan  
schwarz  
polyuréthane noir  
poliuretano negro

# **lapalma**

via majorana 26  
35010 cadoneghe (PD), italy  
t.: +39 049 702788  
[info@lapalma.it](mailto:info@lapalma.it)  
[www.lapalma.it](http://www.lapalma.it)